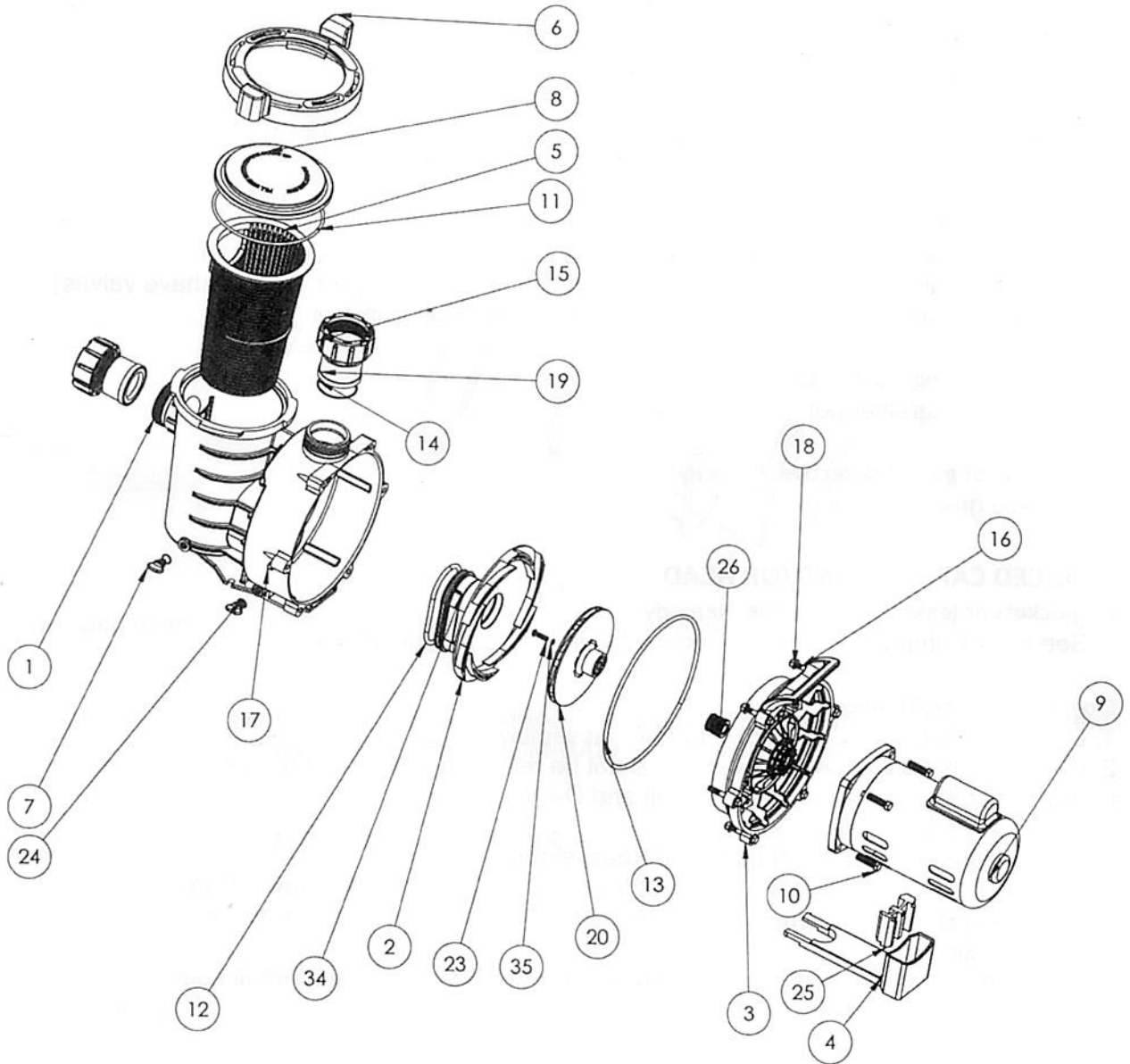


SECTION 6. TECHNICAL DATA

EXPLODED VIEW



(Figure 4)

REV-SS PUMP REPLACEMENT PARTS

ITEM NO.	DESCRIPTION	PART NO.	QTY.
1	Pump Housing/Strainer Pot	49109	1
2	Diffuser	49108	1
3	Seal Plate	49102	1
4	Foot	49107	1
5	Basket	49106	1
6	Clamp/Locking Ring	49104	1
7	Drain Plug	49105	2
8	LID	49103	1
9	Motor	49300	1
10	Bolt 3/8"x16-1" SS	49538	4
11	O Ring Lid	49203	1
12	O Ring Diffuser	49208	1
13	O Ring Housing	49209	1
14	O Ring Coupling	49211	2
15	Bulk Head/Coupling	49101	2
16	Bolt 5/16"x18-2.25" SS	49516	6
17	Nut 5/16"-18 SS	49515	6
18	Washer 5/16" SS	49514	12
19	Connection 2 inch-Slip fit	49111	2
20	Impeller Assembly	49110	1
23	Left hand screw 1/4"X20 SS or Plastic (CSA)	49410	1
24	O Ring- Drain Plug	49205	2
25	Rubber Support Motor	49207	1
26	Mechanical Seal	31110	1
34	Screw Diffuser Self Tap SS	49510	3
35	O ring Impeller Set Screw	49411	1

REV-SS PUMP HYDRAULIC PERFORMANCE CURVES

