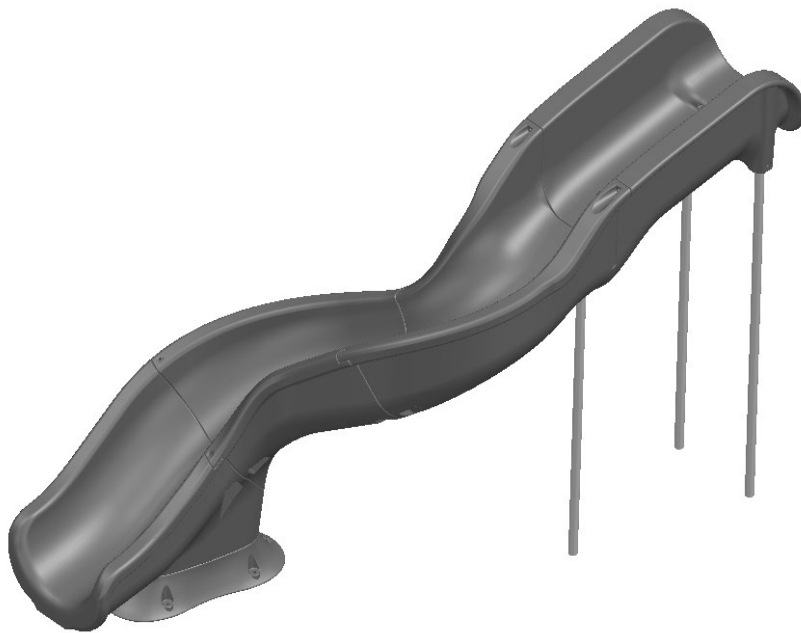




"Global Pool Products is committed to engineering and manufacturing world class products in the pool industry"

RT15 ASSEMBLY & INSTALLATION GUIDE



www.global-poolproducts.com

Global Pool Products
1330 Pigeon Rd
Bad Axe, MI 48413
P: 989-269-5900 - TF: 866-712-0606
Fax: 989-269-5902
www.global-poolproducts.com

Information contained in this document is proprietary and confidential to Global Pool Products and not to be reproduced without written consent from Global Pool Products.



"Global Pool Products is committed to engineering and manufacturing world class products in the pool industry"

RT15 SLIDE

TABLE OF CONTENTS

Introduction	PAGE 3
RT15 Post Installation Instructions	PAGE 4
Maintenance Instructions	PAGE 4
RT15 Slide Placement/Stub Up	PAGE 5-6
RT15 Specification Sheets	PAGE 7-9
RT15 Assembly	PAGE 10-23
Optional Lighting Prep	PAGE 24
Concrete Diagrams	PAGE 25-26
Support Poles-Height Adjustment	PAGE 27
Mounting & Plumbing Instructions	PAGE 28-29
Exploded View	PAGE 30-32

Global Pool Products
1330 Pigeon Rd
Bad Axe, MI 48413
P: 989-269-5900 - TF: 866-712-0606
Fax: 989-269-5902
www.global-poolproducts.com

Information contained in this document is proprietary and confidential to
Global Pool Products and not to be reproduced without
written consent from Global Pool Products.



“Global Pool Products is committed to engineering and manufacturing world class products in the pool industry”

INTRODUCTION

Global Pool Products is located in Mid-Michigan. Global Pool Products prides itself in manufacturing top of the line quality aquatic pool equipment and products. Global Pool Product’s key staff has a century of combined industry experience and we take pride in each and every product that we build. Our products are made in the United States. Global Pool Products uses only the finest materials and processes to provide our customers with the highest quality products while still maintaining a price competitive edge.

The RT15 is designed for use on in-ground residential swimming pools ONLY. The RT15 Slide must be properly assembled, installed, used and supervised for proper use and operation to reduce the risk of serious injury and/or death.

Please refer to your local building codes and national building codes to be implemented prior to slide installation.

Before starting assembly, remove all packaging and materials from the boxes. Double check to make sure that nothing is left inside the boxes. Identify the parts and hardware utilizing the parts listed in this document. Examine all parts thoroughly prior to installation to avoid anything that may have been damaged in transit. A damaged part should not be used in the installation of this slide. Contact Global Pool Products if any parts arrived damaged. Proper assembly and installation of the RT15 Slide is imperative. Not following the directions provided will void Global Pool Products Warranty and may affect the safety of the slide rider.

After installation of the RT15, please provide the slide owner with an owner’s manual, insist that warranty information be completed and sent to Global Pool Products, discuss proper use of the slide, and answer any and all questions regarding the safety of the slide.

**⚠️ NEGLECTING TO FOLLOW THESE INSTRUCTIONS AND THE OWNER’S
MANUAL MAY RESULT IN SERIOUS INJURY OR DEATH ⚠️**

Global Pool Products
1330 Pigeon Rd
Bad Axe, MI 48413
P: 989-269-5900 - TF: 866-712-0606
Fax: 989-269-5902
www.global-poolproducts.com

Information contained in this document is proprietary and confidential to
Global Pool Products and not to be reproduced without
written consent from Global Pool Products.



"Global Pool Products is committed to engineering and manufacturing world class products in the pool industry"

POST INSTALLATION CHECKLIST FOR RT15 SLIDE

Installer to review with slide owner upon completion of slide installation.

Examine:

- ☐ The flume for any apparent cracks or gashes.
- ☐ The flume for sharp borders or snags.
- ☐ All fasteners to make sure none are loose.
- ☐ The support poles for stability and connection to the flume.
- ✓ Pool water depth at the base of the slide should be at least 3' (914 mm) deep.
- ✓ The height of the slide flume exit above the water should be 20" (508 mm) maximum.
- ✓ The distance between the slide centerline and the edge of other pool equipment should be at least 3'6" (1067 mm).

MAINTENANCE INSTRUCTIONS

- A. Spray your RT15 Slide down with water to wash away build up.
- B. Be sure that all connection points are tight. If not, tighten anchors as necessary.
- C. All polyethylene parts require little maintenance. Hose and wipe to clean.

Examine:

- ☐ The flume for any apparent cracks or gashes.
- ☐ All fasteners to make sure none are loose.
- ☐ The inner flume for sharp borders, snags, cracks, or gashes.

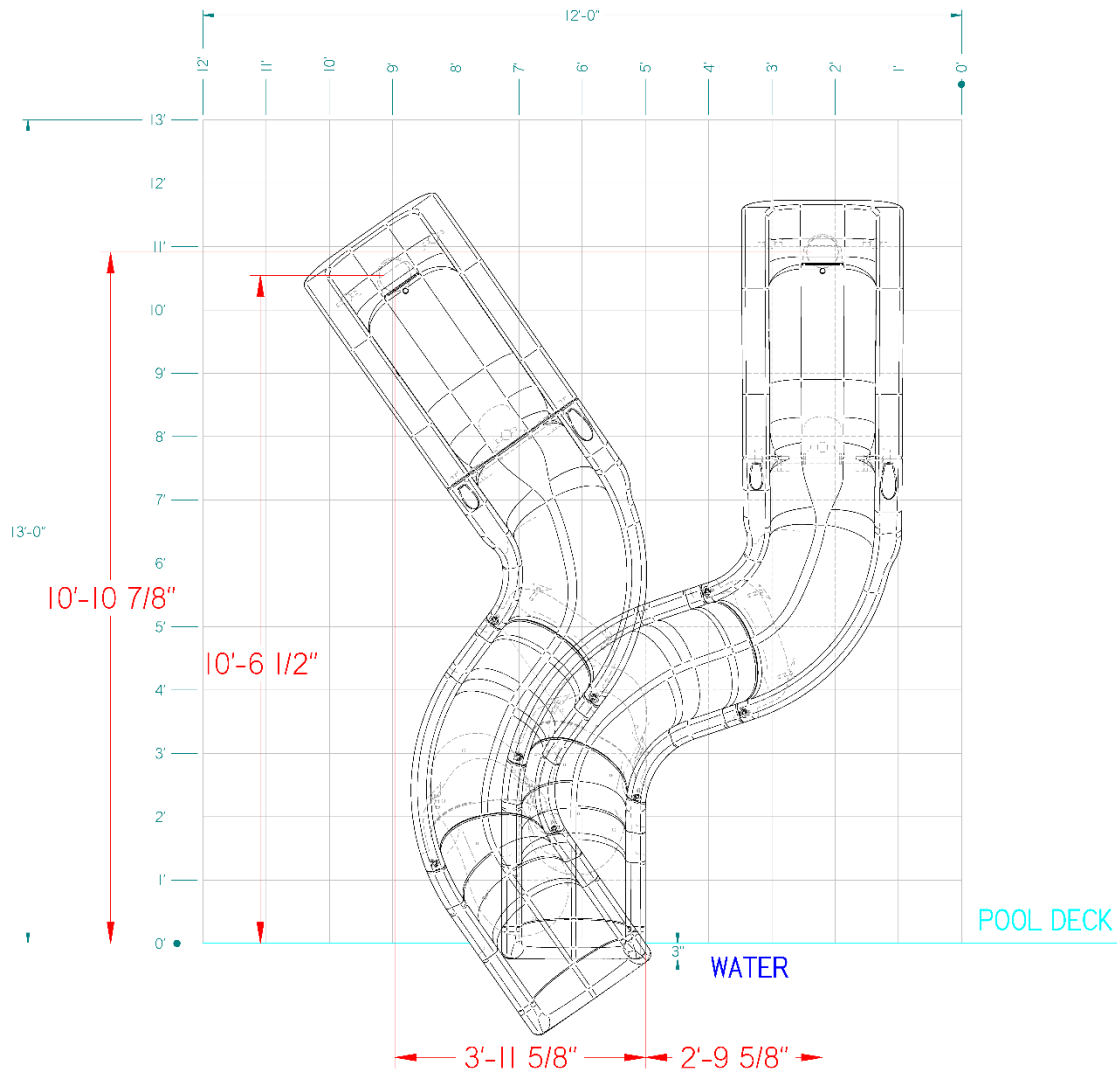
Global Pool Products
1330 Pigeon Rd
Bad Axe, MI 48413
P: 989-269-5900 - TF: 866-712-0606
Fax: 989-269-5902
www.global-poolproducts.com

Information contained in this document is proprietary and confidential to
Global Pool Products and not to be reproduced without
written consent from Global Pool Products.



"Global Pool Products is committed to engineering and manufacturing world class products in the pool industry"

RT15 Slide Placement/Stub-up Locations – Right Hand



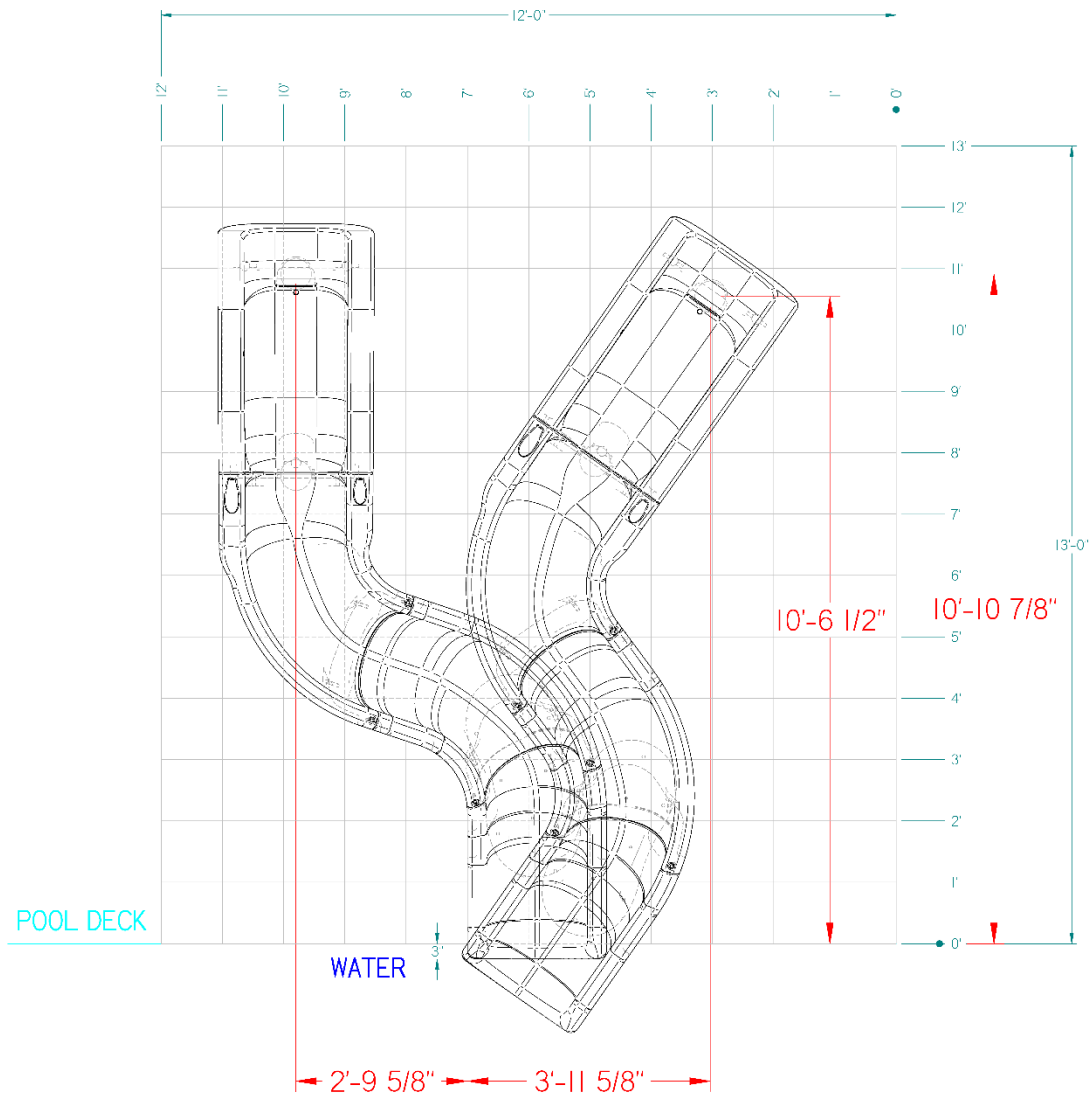
Global Pool Products
 1330 Pigeon Rd
 Bad Axe, MI 48413
 P: 989-269-5900 - TF: 866-712-0606
 Fax: 989-269-5902
www.global-poolproducts.com

Information contained in this document is proprietary and confidential to Global Pool Products and not to be reproduced without written consent from Global Pool Products.



"Global Pool Products is committed to engineering and manufacturing world class products in the pool industry"

RT15 Slide Placement/Stub-up Locations – Left Hand



Global Pool Products
 1330 Pigeon Rd
 Bad Axe, MI 48413
 P: 989-269-5900 - TF: 866-712-0606
 Fax: 989-269-5902
www.global-poolproducts.com

Information contained in this document is proprietary and confidential to Global Pool Products and not to be reproduced without written consent from Global Pool Products.



"Global Pool Products is committed to engineering and manufacturing world class products in the pool industry"

RT15 Slide Specifications

Product Numbers and Shipping Weights:

Model Number	Description	Shipping Weights
GPPSRT15-GREY-R	RT15 Slide – Grey Granite Right	475 lbs (215 kg)
GPPSRT15-SAND-R	RT15 Slide – Sandstone Granite Right	475 lbs (215 kg)
GPPSRT15-GREY-L	RT15 Slide – Gray Granite Left	475 lbs (215 kg)
GPPSRT15-SAND-L	RT15 Slide – Sandstone Granite Left	475 lbs (215 kg)
GPPSRT15-GREY-R-LED	RT15 Slide – Gray Granite Right w/ Flume Light Pkg	485 lbs (220 kg)
GPPSRT15-SAND-R-LED	RT15 Slide – Sandstone Granite Right w/ Flume Light Pkg	485 lbs (220 kg)
GPPSRT15-GREY-L-LED	RT15 Slide – Gray Granite Left w/ Flume Light Pkg	485 lbs (220 kg)
GPPSRT15-SAND-L-LED	RT15 Slide – Sandstone Granite Left w/ Flume Light Pkg	485 lbs (220 kg)

Broad Description:

The RT15 Slide is a sturdy, durable, roto-molded slide with enclosed plumbing for a clean finished look. The RT15 is available in Sandstone or Gray Granite finishes and has the option of an LED lighting package.

Utilization:

The RT15 is intended for use on in-ground residential swimming pools ONLY. Our multi point anchoring system allows the RT15 to accommodate most geographical regions. The slide is rated for a maximum of 300 lb. (136 kg) for its riders.

Specifications:

- The slide runway has a twenty-one inch wide seating area made of a thick, durable, roto-molded plastic.
- Water is delivered with a 1" PVC hose to allow maximum water coverage on the flume at 25 gpm.
- The RT15 is anchored to the pool deck with ½" diameter galvanized anchor studs with attaching hardware.

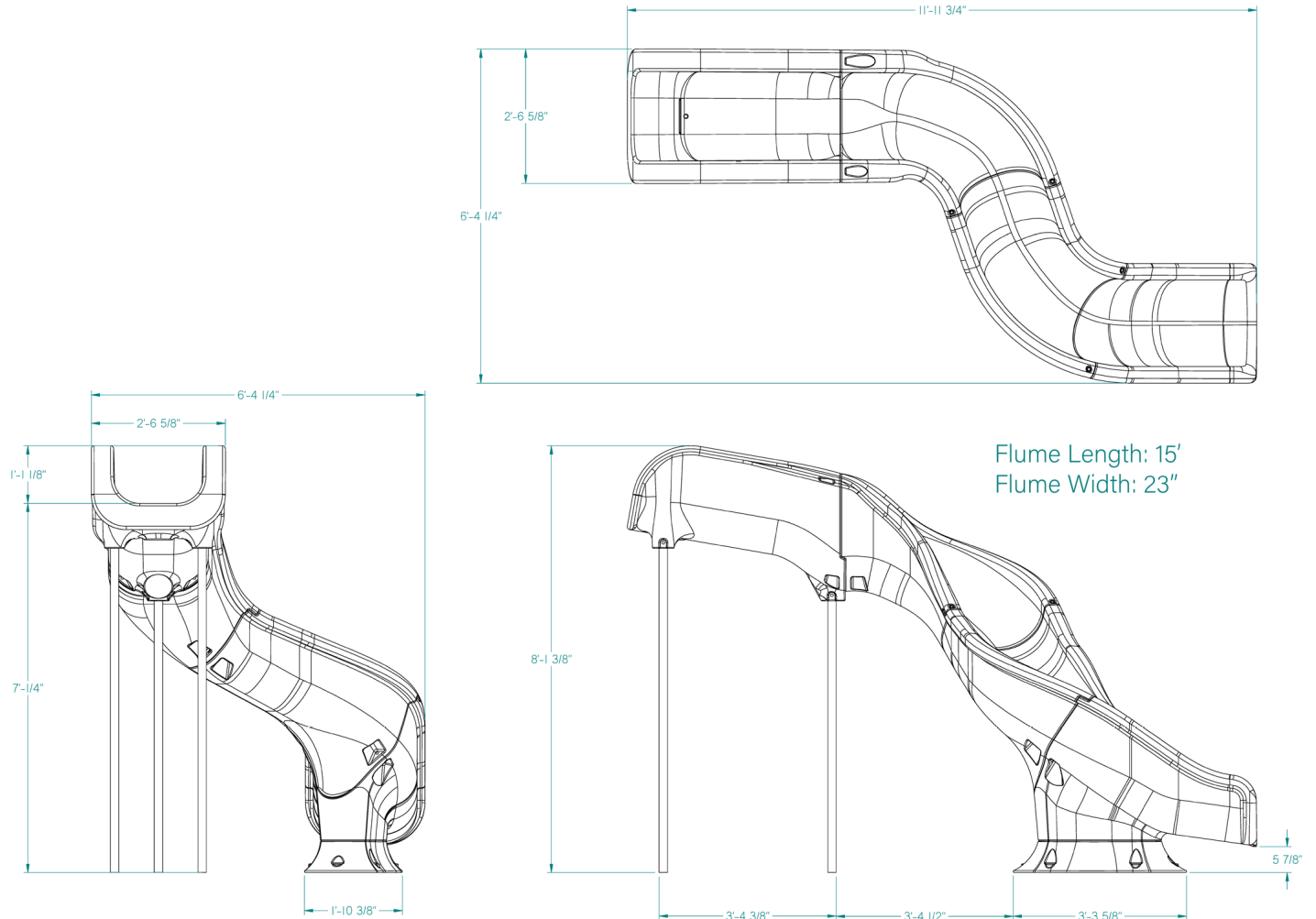
Global Pool Products
1330 Pigeon Rd
Bad Axe, MI 48413
P: 989-269-5900 - TF: 866-712-0606
Fax: 989-269-5902
www.global-poolproducts.com

Information contained in this document is proprietary and confidential to Global Pool Products and not to be reproduced without written consent from Global Pool Products.



"Global Pool Products is committed to engineering and manufacturing world class products in the pool industry"

RT15 Slide Specifications



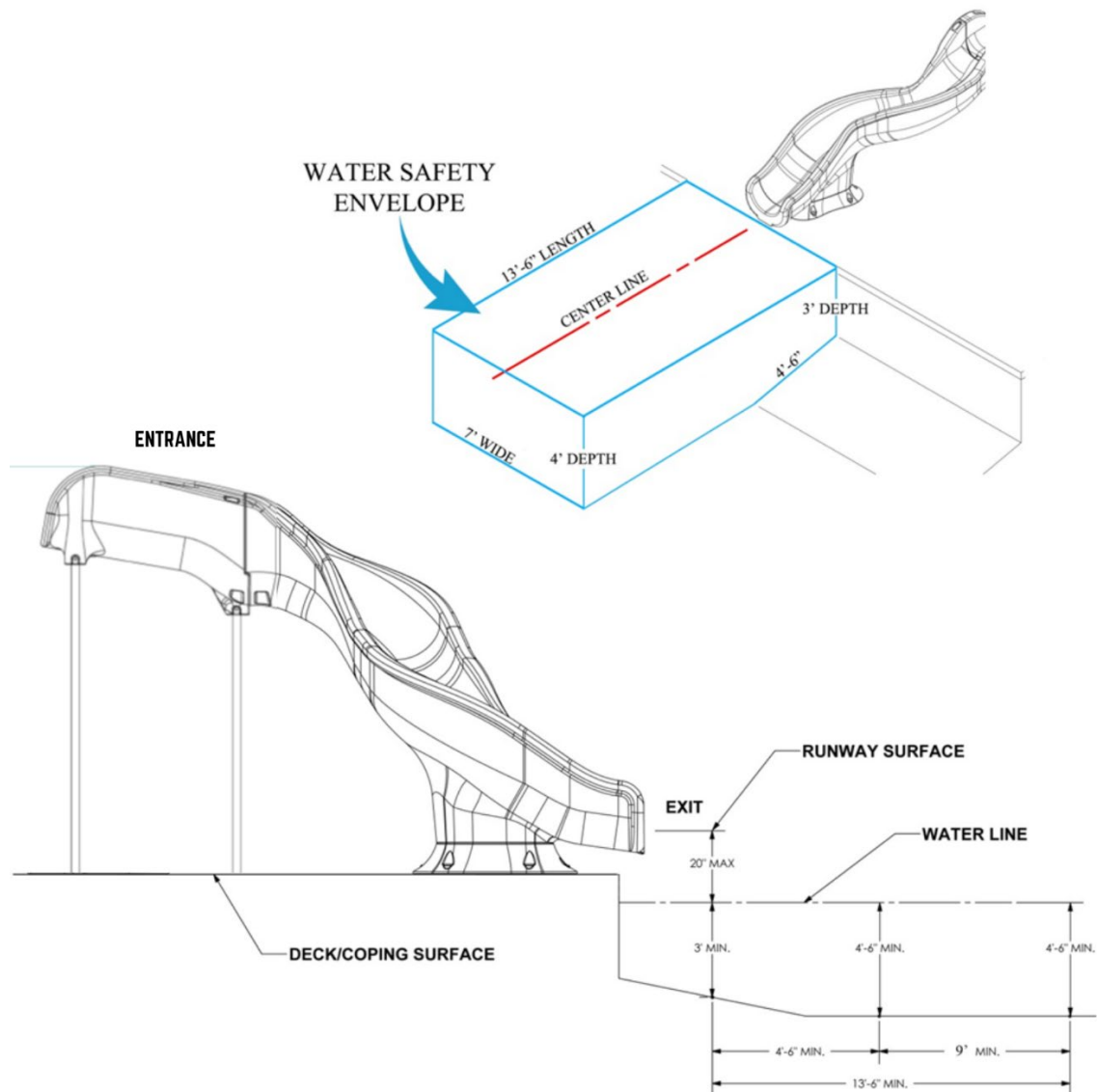
Global Pool Products
 1330 Pigeon Rd
 Bad Axe, MI 48413
 P: 989-269-5900 - TF: 866-712-0606
 Fax: 989-269-5902
www.global-poolproducts.com

Information contained in this document is proprietary and confidential to Global Pool Products and not to be reproduced without written consent from Global Pool Products.



"Global Pool Products is committed to engineering and manufacturing world class products in the pool industry"

RT15 Slide Water Safety Envelope



Global Pool Products
1330 Pigeon Rd
Bad Axe, MI 48413
P: 989-269-5900 - TF: 866-712-0606
Fax: 989-269-5902
www.global-poolproducts.com

Information contained in this document is proprietary and confidential to Global Pool Products and not to be reproduced without written consent from Global Pool Products.



"Global Pool Products is committed to engineering and manufacturing world class products in the pool industry"

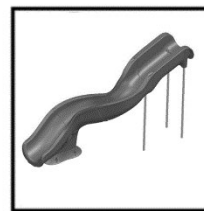
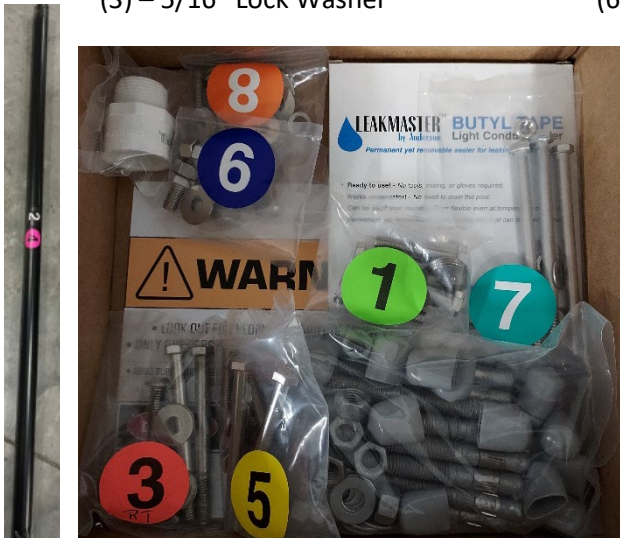
RT15 ASSEMBLY INSTRUCTIONS

Tools Needed:

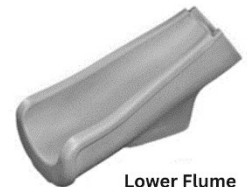
- | | | |
|------------------------------|-----------------------|---------------------------------|
| 1. 3/16" Allen Wrench | 6. PTFE (Teflon) Tape | 11. 5/8" Deep Well Socket |
| 2. 7/32" Allen Wrench | 7. PTFE (Teflon) Glue | 12. 9/16" Deep Well Socket |
| 3. 9/16" Wrench | 8. PVC Primer | 13. Ratchet & Ratchet Extension |
| 4. Anti-Seize (Included) | 9. PVC Glue | 14. Level |
| 5. Phillips Head Screwdriver | 10. 1/2" Socket | 15. 1/2" Wrench |

Included Hardware:

- | | | |
|------------------------------------|--------------------------------------|----------------------------|
| (4) – 3/8" Hex Bolt – 2" | (28) – 3/8" x 1" Washer | (8) – 3/8" Lock Washer |
| (4) – 3/8" Button Head Bolt – 2" | (12) – Concrete Anchor | (4) – 3/8" Hex Bolt – 4" |
| (12) – Anchor Nut Caps | (2) – 3/8" Hex Bolt – 3 3/4" | (6) – #4 Screw x 1/2" |
| (10) – 3/8" Nut | (2) – 3/8" Button Head Bolt – 3 1/2" | (1) – Warning Plate |
| (1) – 54" Thick Foam-Rubber Gasket | (2) – 34" Foam-Rubber Gasket | (2) – 3/8" Hex Bolt – 3/4" |
| (1) – 7'6" PVC Flex Hose | (1) – 1" PVC MPT Adapter | (2) – 3/8" x 3" Studs |
| (1) – Roll of Butyl | (3) – 5/16" X 5" Hex Bolt | (3) – 5/16" Nut |
| (3) – 5/16" Lock Washer | (6) – 5/16" Flat Washer | |



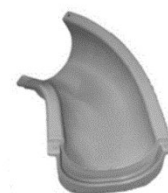
Flume Base



Lower Flume



Water Delivery Flume



Middle Flume



Upper Flume

Global Pool Products
1330 Pigeon Rd
Bad Axe, MI 48413
P: 989-269-5900 - TF: 866-712-0606
Fax: 989-269-5902
www.global-poolproducts.com

Information contained in this document is proprietary and confidential to Global Pool Products and not to be reproduced without written consent from Global Pool Products.



"Global Pool Products is committed to engineering and manufacturing world class products in the pool industry"

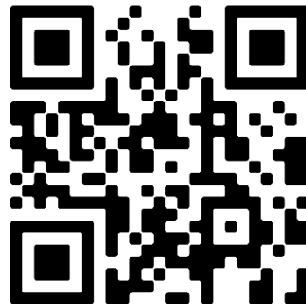
Prior to the Start of Assembly:

- Utilize the cardboard that the slide shipped in as a barrier between your slide components and the surface that the slide is being assembled on to prevent any scuffs and scratches.
- Apply anti-seize to all threaded portions of the fastener hardware. This will aide in the assembly, resistance of corrosion, and prevents galling.
- Prepare all bolts with a lock washer and washer in the order as shown below.



- Tighten fasteners after all fasteners are threaded in place.

Scan the QR Code for Video Assembly Instructions



Global Pool Products
1330 Pigeon Rd
Bad Axe, MI 48413
P: 989-269-5900 - TF: 866-712-0606
Fax: 989-269-5902
www.global-poolproducts.com

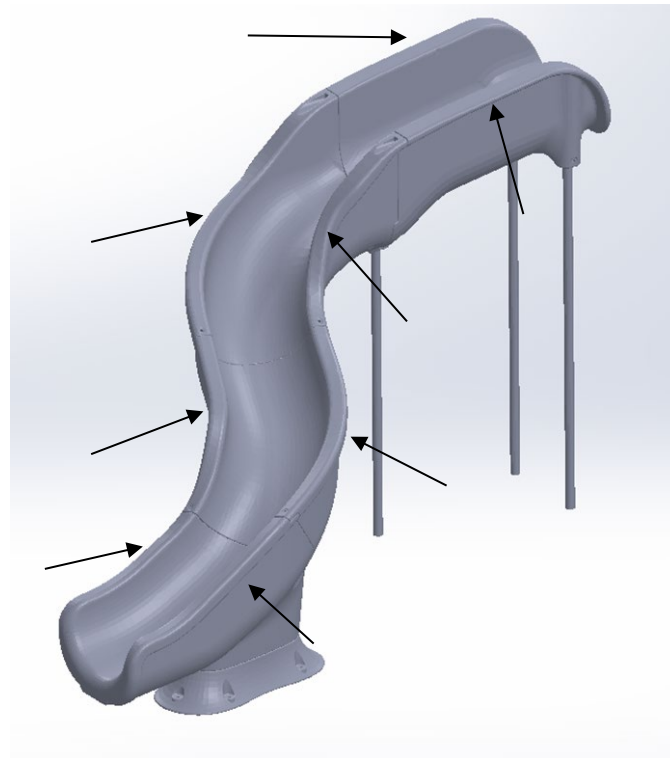
Information contained in this document is proprietary and confidential to
Global Pool Products and not to be reproduced without
written consent from Global Pool Products.



"Global Pool Products is committed to engineering and manufacturing world class products in the pool industry"

Attention: Vent hole clearance requirements

Figure 1:



- All arrows in Figure 1 above represent vent holes that have been drilled into the landscape slide pieces and need to stay open after installation.
- These vent holes are drilled on the underside of the hand grip, during installation DO NOT cover these up or plug them in any way, they must vent air for the parts to function properly. They can be extended but must be able to vent air.
- If these air vents are blocked the individual parts will not vent air in and out properly and will cause issues such as big areas of the flume bubbling up and causing the slide to not be useable

Global Pool Products
1330 Pigeon Rd
Bad Axe, MI 48413
P: 989-269-5900 - TF: 866-712-0606
Fax: 989-269-5902
www.global-poolproducts.com

Information contained in this document is proprietary and confidential to Global Pool Products and not to be reproduced without written consent from Global Pool Products.



"Global Pool Products is committed to engineering and manufacturing world class products in the pool industry"

RT15 Assembly Instructions

STEP 1

Attaching the base to the lower flume

- Use bag one from the hardware kit to attach the lower flume to the base
- Turn the lower flume upside down laying it on a soft surface to prevent scratches
- Lay the base on the flume and attach them together using four 2" hex bolts using one flat washer for each bolt
- Once all bolts are started, tighten with a 9/16" socket



Global Pool Products
1330 Pigeon Rd
Bad Axe, MI 48413
P: 989-269-5900 - TF: 866-712-0606
Fax: 989-269-5902
www.global-poolproducts.com

Information contained in this document is proprietary and confidential to Global Pool Products and not to be reproduced without written consent from Global Pool Products.

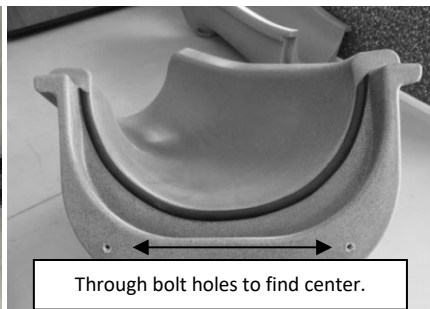


"Global Pool Products is committed to engineering and manufacturing world class products in the pool industry"

STEP 2

Installing the foam gasket and butyl on the lower flume

- Measure the center of lower flume, use the two through bolt holes as measuring points, put a mark with a sharpie low enough so it is not visible once the slide is assembled
- Install one of the shorter 34" foam-rubber gasket from the seal kit tube on the lower flume, start at the top and install it following the curve of the flume, cut off any excess and discard it
- From the roll of butyl, cut a piece of butyl 28" long and mark the center with your thumbnail
- Line the center of the lower flume to the center of the 28" long butyl (paper side facing you), place it directly under the foam-rubber gasket following the curve of the lower flume, make sure they are touching to ensure proper placement
- Firmly press in the butyl to ensure it is secure to the flume, then remove the paper backing from the butyl



Global Pool Products
1330 Pigeon Rd
Bad Axe, MI 48413
P: 989-269-5900 - TF: 866-712-0606
Fax: 989-269-5902
www.global-poolproducts.com

Information contained in this document is proprietary and confidential to Global Pool Products and not to be reproduced without written consent from Global Pool Products.

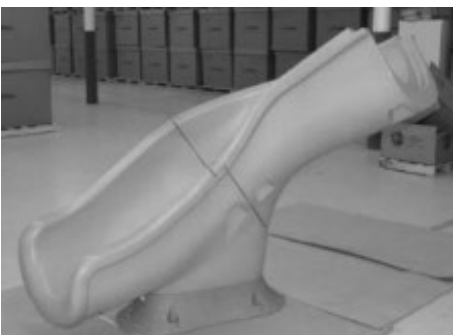


"Global Pool Products is committed to engineering and manufacturing world class products in the pool industry"

STEP 3

Attaching the middle flume to the lower flume

- Use two people to lift the middle flume and place it onto the lower flume, they lock into place with the grooved design
- From bag three in the hardware kit, use two 2" button head bolts, each with one flat washer on the upper attachment points
- From bag three in the hardware kit, use two 4" hex bolts, each with one flat washer on the lower attachment points, secure them on the opposite side with a flat washer, then a lock washer, and lastly a hex nut.
- Plastic clamps may need to be used to aid alignment of the bolt holes
- Once all bolts have been started, tighten the button head bolts with a 7/32" Allen wrench and hex bolts and nuts with a 9/16" socket and 9/16" wrench



Global Pool Products
1330 Pigeon Rd
Bad Axe, MI 48413
P: 989-269-5900 - TF: 866-712-0606
Fax: 989-269-5902
www.global-poolproducts.com

Information contained in this document is proprietary and confidential to Global Pool Products and not to be reproduced without written consent from Global Pool Products.

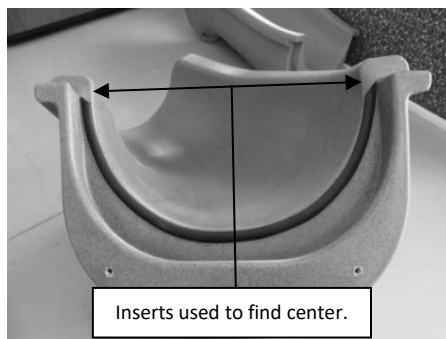


"Global Pool Products is committed to engineering and manufacturing world class products in the pool industry"

STEP 4

Installing a foam gasket and butyl to form the dual gasket on the middle flume

- Measure the center of the middle flume, use the inserts as measuring points, put a mark with a sharpie low enough so it is not visible once the slide is assembled
- Install the second shorter 34" foam-rubber gasket from the seal kit tube on the lower flume, start at the top and install it following the curve of the flume, cut off any excess and discard it
- From the roll of butyl, cut a piece 28" long and mark the center with your thumbnail
- Line the center of the middle flume to the center of the 28" long butyl (paper side facing you), place it directly under the foam-rubber gasket following the curve of the lower flume, make sure they are touching to ensure proper placement
- Firmly press in the butyl to ensure it is secure to the flume, then remove the paper backing from the butyl



Global Pool Products
1330 Pigeon Rd
Bad Axe, MI 48413
P: 989-269-5900 - TF: 866-712-0606
Fax: 989-269-5902
www.global-poolproducts.com

Information contained in this document is proprietary and confidential to Global Pool Products and not to be reproduced without written consent from Global Pool Products.



"Global Pool Products is committed to engineering and manufacturing world class products in the pool industry"

STEP 5

Attaching the upper flume to the middle flume

- Use two people to lift the upper flume and place it onto the middle flume, they lock into place with the grooved design
- From bag five in the hardware kit, use two 2" button head bolts, each with one flat washer on the upper attachment points
- From bag five in the hardware kit, use two 4" hex bolts, each with one flat washer on the lower attachment points, secure them on the opposite side with a flat washer, then a lock washer, and lastly a hex nut
- Plastic clamps may be needed to aid alignment of the bolt holes
- Once all the bolts have been started, tighten the button head bolts with a 7/32" Allen wrench and hex bolts and nuts with a 9/16" socket and 9/16" wrench.



Global Pool Products
1330 Pigeon Rd
Bad Axe, MI 48413
P: 989-269-5900 - TF: 866-712-0606
Fax: 989-269-5902
www.global-poolproducts.com

Information contained in this document is proprietary and confidential to Global Pool Products and not to be reproduced without written consent from Global Pool Products.



"Global Pool Products is committed to engineering and manufacturing world class products in the pool industry"

STEP 6

Attaching the plumbing

- Use the PVC fitting in bag six from the hardware kit to hookup the plumbing in the water delivery flume
- Add PTFE (Teflon) tape and then PTFE (Teflon) glue to the to the 1" MPT Adapter to ensure the plumbing doesn't leak
- Through the access hole, located on the underside of the water delivery flume, thread the fitting into the internal brass fitting (molded into the water delivery flume portion of the slide)
- Apply PVC primer to the female end of the adapter and to one end of the flex hose
- Apply PVC glue to the female end of the adapter and the flex hose where it was primed
- Join the flex hose with the PVC adapter (push in and twist for good adhesion) until the pipe bottoms out, hold them together until they have started to bond
- Allow for proper drying time before moving to the next step





"Global Pool Products is committed to engineering and manufacturing world class products in the pool industry"

STEP 7

Installing support poles to the water delivery flume

(Note: If you are requiring height adjustment to the support poles, refer to page 26 for further instructions before continuing to step 7.)

- a. Insert the three support poles into the sockets on the underside of the water delivery flume
- b. From bag seven in the hardware kit, use three (one per hole) 5/16" x 5" hex bolts each with one flat washer, secure on the opposite side first with a flat washer, then a lock washer, and lastly a hex nut
- c. Tighten the hex bolts with a 1/2" wrench and 1/2" socket on a ratchet
- d. Ensure the poles are level front to back and side to side with a level





"Global Pool Products is committed to engineering and manufacturing world class products in the pool industry"

STEP 7.5

Installing the dual seal on the water delivery flume

- Measure the center of the water delivery flume, use the two through bolt holes as measuring points, mark center with a sharpie
- Install the longer 54" foam-rubber gasket from the seal kit tube on the flume, start at the top and install it following the curve, cut off any excess and discard it, each end should be roughly 3" from the flume tops
- From the roll of butyl, cut two pieces 32" long, take the exposed sides of the butyl and attach them to double the thickness, peel one side of the paper off and mark the center with your thumbnail
- Line the center of the water delivery flume to the center of the doubled 32" piece of butyl (paper side facing you), place it directly under the foam-rubber gasket following the curve, make sure they are touching to ensure proper placement
- Firmly press in the butyl to ensure it is secure to the flume, then remove the paper backing from the butyl



Through bolt holes to find center.



Global Pool Products
1330 Pigeon Rd
Bad Axe, MI 48413
P: 989-269-5900 - TF: 866-712-0606
Fax: 989-269-5902
www.global-poolproducts.com

Information contained in this document is proprietary and confidential to Global Pool Products and not to be reproduced without written consent from Global Pool Products.



"Global Pool Products is committed to engineering and manufacturing world class products in the pool industry"

STEP 8

Attaching the water delivery flume to the flume assemblies

- From bag eight in the hardware kit, use two 3" studs and install them into the upper flume, tighten them using a 3/16" Allen Wrench
- Connect the upper flume to water delivery flume, guide the studs into the through bolt holes on the water delivery flume
- From bag eight in the hardware kit, use two 3 3/4" inch hex bolts, each with one flat washer, insert them into the lower connection points on the water delivery flume side, secure them on the flume connection side with a flat washer, then a lock washer, and lastly a hex nut
- From bag eight in the hardware kit, use two 3 1/2" button head bolts, each with one flat washer, insert them into the upper connection points on the flume connection side, secure them on the water delivery flume side with a flat washer, then a locker washer, and lastly a hex nut
- DO NOT FULLY TIGHTEN ANY OF THE BOLTS IN STEP 8



Global Pool Products
1330 Pigeon Rd
Bad Axe, MI 48413
P: 989-269-5900 - TF: 866-712-0606
Fax: 989-269-5902
www.global-poolproducts.com

Information contained in this document is proprietary and confidential to Global Pool Products and not to be reproduced without written consent from Global Pool Products.

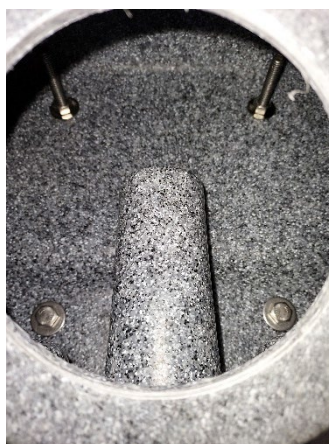


"Global Pool Products is committed to engineering and manufacturing world class products in the pool industry"

STEP 9

Installing the inner connections between the water delivery flume and upper flume

- From bag nine in the hardware kit, use two 3/4" hex bolts, each with one flat washer, insert them into the two lower connection points inside the water delivery flume
- From bag nine in the hardware kit, use one flat washer for each stud, insert them onto the studs inside the water delivery flume, secure them with hex nuts
- Tighten the hex bolts with a short extension and 9/16" socket, tighten the hex nuts with a 9/16" wrench
- RETURN TO THE FOUR BOLTS INSTALLED IN STEP 8 AND TIGHTEN THEM.
- Turn on the water to the slide to ensure there are no leaks at the connection point of the fitting to the brass insert or the connection point of the flex hose to the PVC adapter





"Global Pool Products is committed to engineering and manufacturing world class products in the pool industry"

STEP 10

Installing the warnings sign around the entrance of the slide

- a. From bag 10 from the hardware kit, place the warning signs in the desired locations (make sure they will be visible to the slide user)

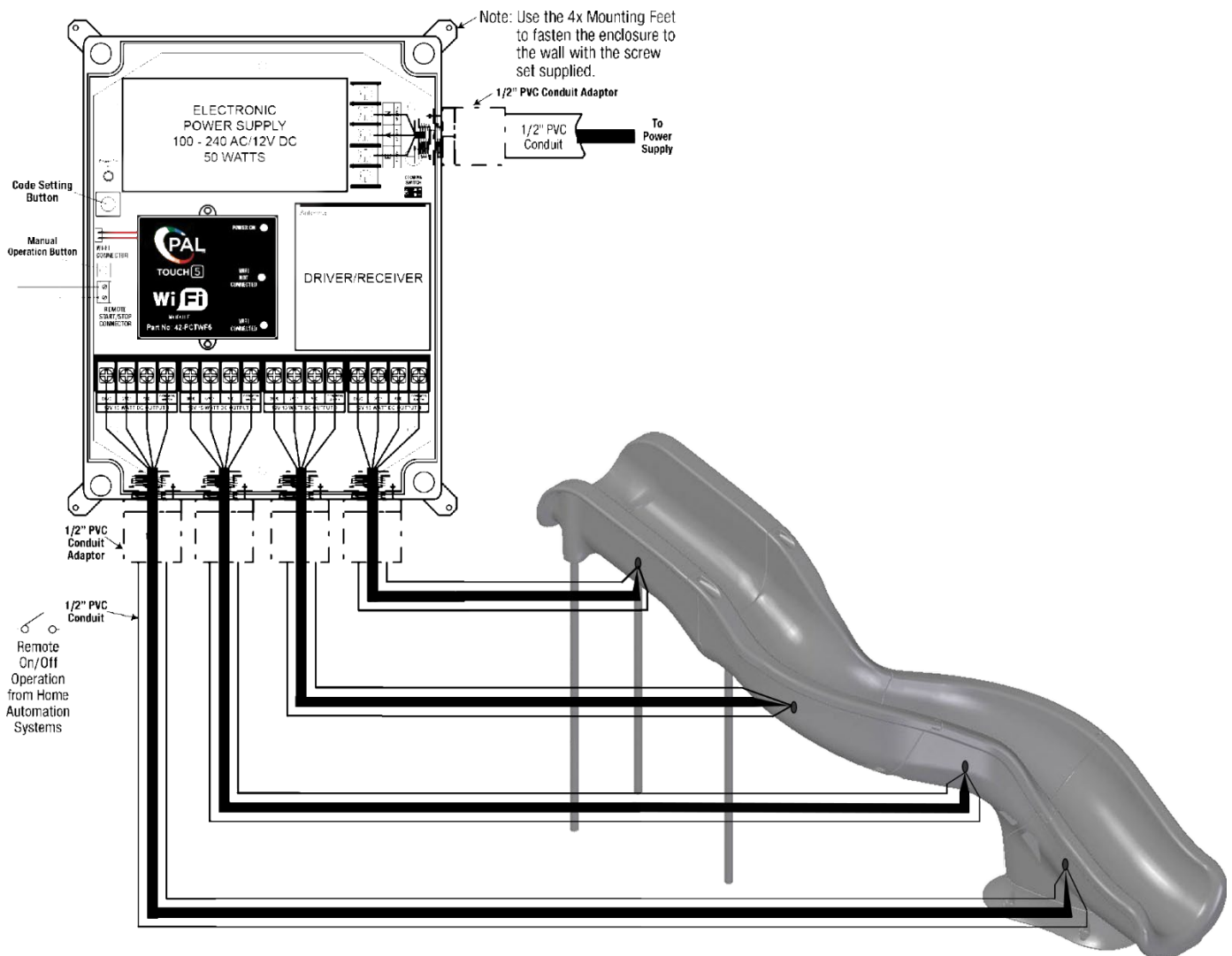




"Global Pool Products is committed to engineering and manufacturing world class products in the pool industry"

Optional Lighting Preparation

1. Install 1" conduit next to the water stub-up before concrete is poured.
2. Run the conduit outside of the concrete pool deck either to the pool equipment or a junction box.
3. Refer to local building or electrical codes.



Global Pool Products
 1330 Pigeon Rd
 Bad Axe, MI 48413
 P: 989-269-5900 - TF: 866-712-0606
 Fax: 989-269-5902
www.global-poolproducts.com

Information contained in this document is proprietary and confidential to Global Pool Products and not to be reproduced without written consent from Global Pool Products.

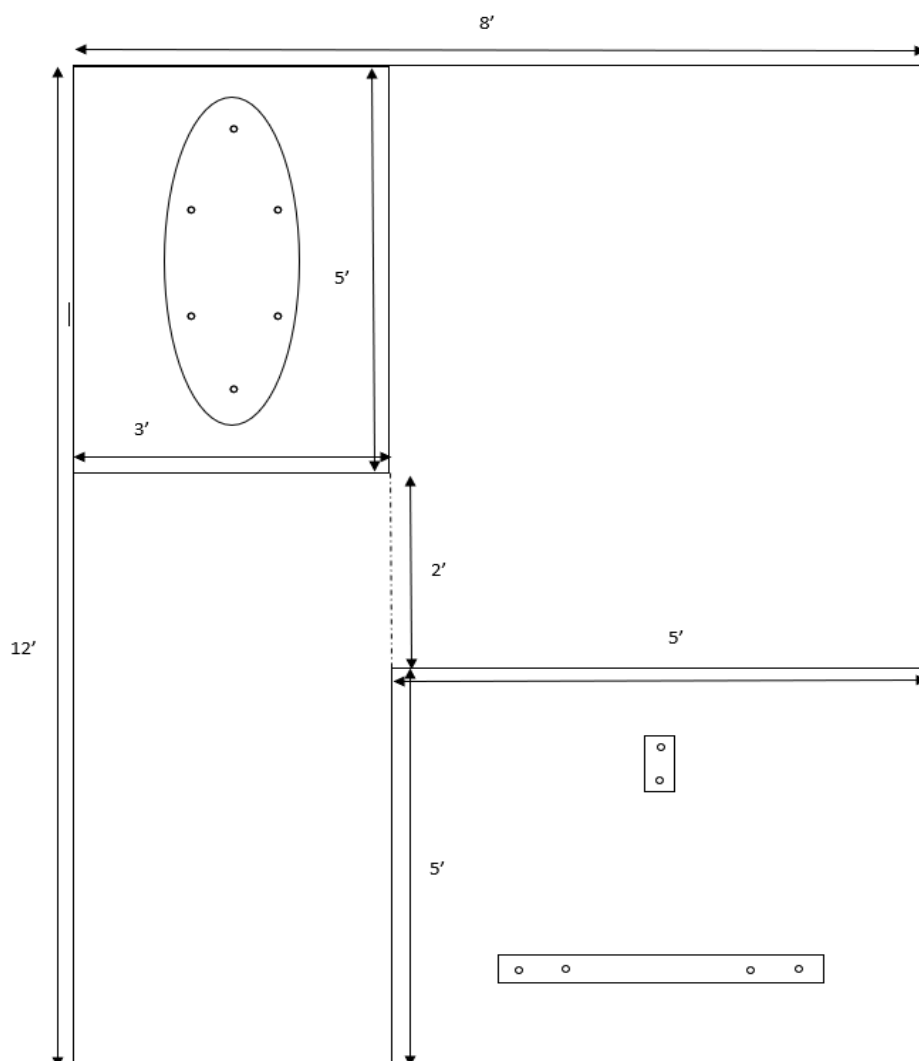


"Global Pool Products is committed to engineering and manufacturing world class products in the pool industry"

RT15 Concrete Diagram-Left Hand

5' x 5' pad for the back three pole support system and a 3' x 5' pad for the front base of the slide.

Both pads need to be a minimum of 4" thick. For layout see the diagram below.



Global Pool Products
1330 Pigeon Rd
Bad Axe, MI 48413
P: 989-269-5900 - TF: 866-712-0606
Fax: 989-269-5902
www.global-poolproducts.com

Information contained in this document is proprietary and confidential to Global Pool Products and not to be reproduced without written consent from Global Pool Products.

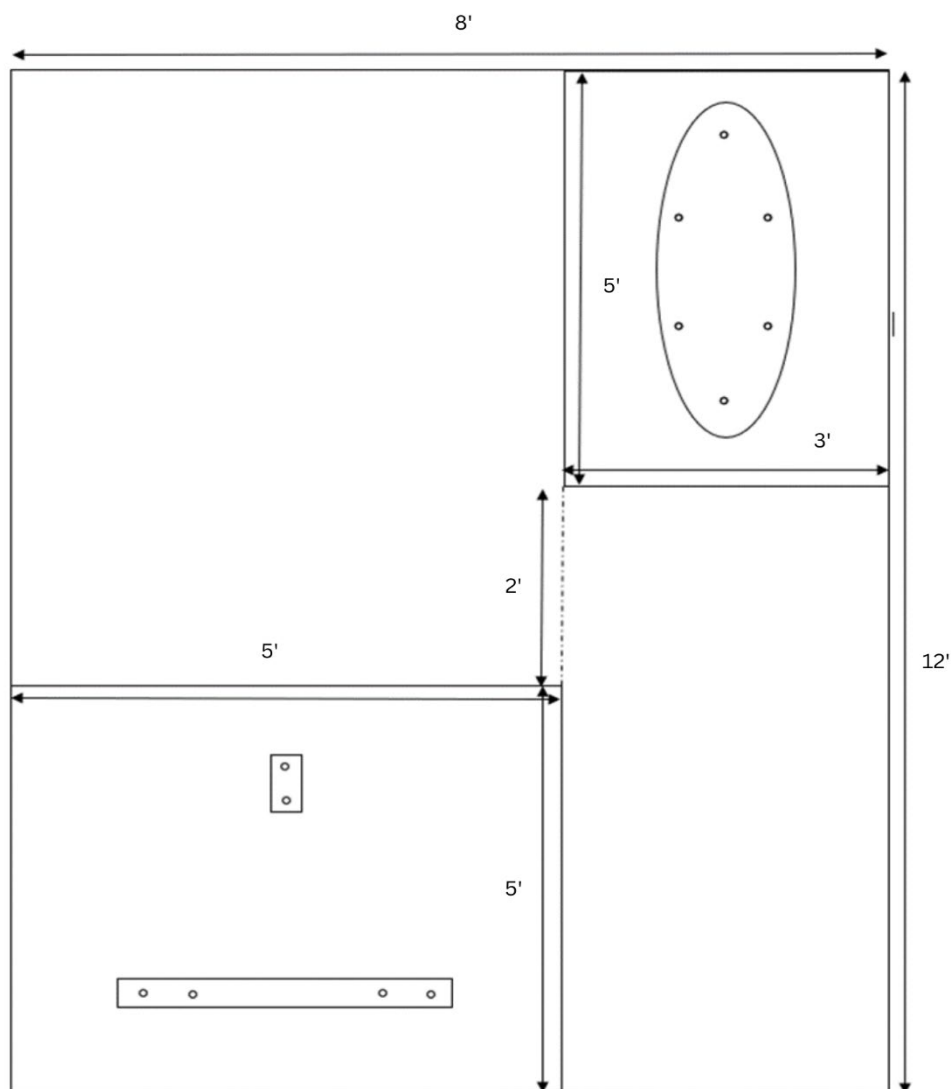


"Global Pool Products is committed to engineering and manufacturing world class products in the pool industry"

RT15 Concrete Diagram-Right Hand

5' x 5' pad for the back three pole support system and a 3' x 5' pad for the front base of the slide.

Both pads need to be a minimum of 4" thick. For layout see the diagram below.



Global Pool Products
 1330 Pigeon Rd
 Bad Axe, MI 48413
 P: 989-269-5900 - TF: 866-712-0606
 Fax: 989-269-5902
www.global-poolproducts.com

Information contained in this document is proprietary and confidential to Global Pool Products and not to be reproduced without written consent from Global Pool Products.



"Global Pool Products is committed to engineering and manufacturing world class products in the pool industry"

Support Poles-Height Adjustment

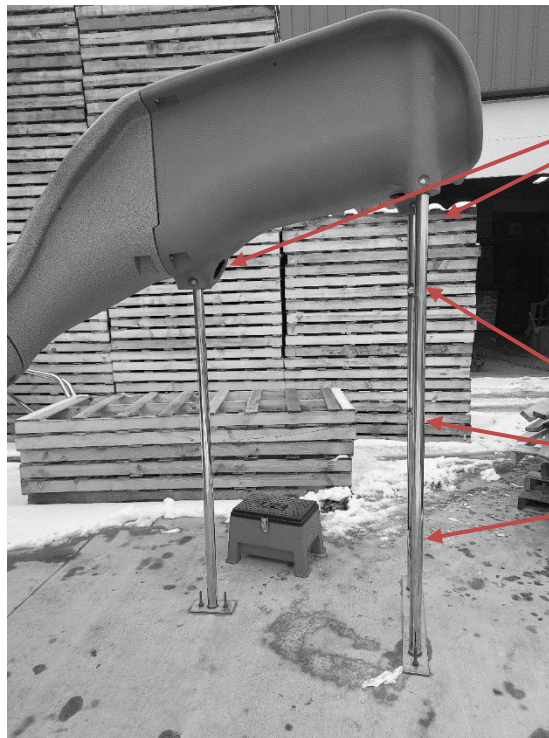
Required Tools:

Drill

Metal Cutting Device

3/8" Drill Bit

1. Measure and cut all three support pole legs to the desired length from the top (cut off existing holes)
2. Deburr the outside of the cut ends so the tube will slide into the molded holes of the slide
3. Fully insert all three poles into the three sockets of the slide and mark the new hole location on the support pole, make sure the single leg anchor plate is perpendicular to the assembled leg (refer to the concrete diagram, page 24-25)
4. Take the poles out and drill 3/8" hole through the pole
5. The poles are now ready to be secured to the slide, refer to step 7 (page 18) for further instructions



Cut from this end, and redrill 3/8" holes the same way

Make sure when measuring where to cut, leave 7" above a cross brace to allow the pole to sit fully in the molded holes of the slide

Global Pool Products
1330 Pigeon Rd
Bad Axe, MI 48413
P: 989-269-5900 - TF: 866-712-0606
Fax: 989-269-5902
www.global-poolproducts.com

Information contained in this document is proprietary and confidential to Global Pool Products and not to be reproduced without written consent from Global Pool Products.



"Global Pool Products is committed to engineering and manufacturing world class products in the pool industry"

Mounting & Plumbing Instructions

Required Tools:

½" SDS Concrete Bit
Shop-vac

Hammer
Center Punch (Marking Tool)

Hammer Drill

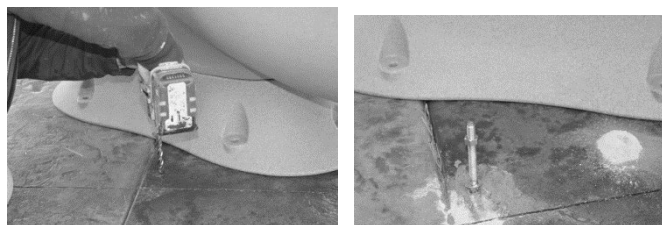
Included Hardware:

½" Concrete Anchors

Front pedestal needs to be installed on a surface with 0 grade to prevent water wicking back onto pool deck.

1. Place the assembled slide on the pool deck relative to the pool wall with the supporting pole side over the stub up location.
2. Check to ensure the exit of the flume clears all coping edges. The slide may be angled to your preference as long as the guidelines provided in Global Pool Product's Placement Instructions are followed.
3. Once the slide is in its desired location and all guidelines are met use a center punch or other marking tool to indicate the mounting holes on the support poles and pedestal so marks are visible on the pool deck surface.
4. Remove the slide and any other objects that could obstruct the drilling of the anchor holes.
5. Using a Hammer Drill equipped with a ½" (13mm) SDS concrete bit, drill the marked holes to a depth of 3" (76mm).

Note: Mark the 3" depth on your SDS bit with some tape to prevent drilling anchor holes too deep. Ensure you are drilling the holes straight and perpendicular for proper holding and strength of anchor.



6. Clear all anchor holes from any debris. Shop-vac may be required if debris gets in anchor holes.

Global Pool Products
1330 Pigeon Rd
Bad Axe, MI 48413
P: 989-269-5900 - TF: 866-712-0606
Fax: 989-269-5902
www.global-poolproducts.com

Information contained in this document is proprietary and confidential to Global Pool Products and not to be reproduced without written consent from Global Pool Products.



“Global Pool Products is committed to engineering and manufacturing world class products in the pool industry”

7. Plumb the slide to stub up location.
 - a. Clean flex hose from slide and stub-up plumbing prior to assembling.
 - b. Use PVC Primer & PVC Glue to adhere plumbing components from the slide and stub-up plumbing together.
8. Place slide back over anchor holes and assemble anchors with the included washer and nut so the top of the nut is flush with the anchor.



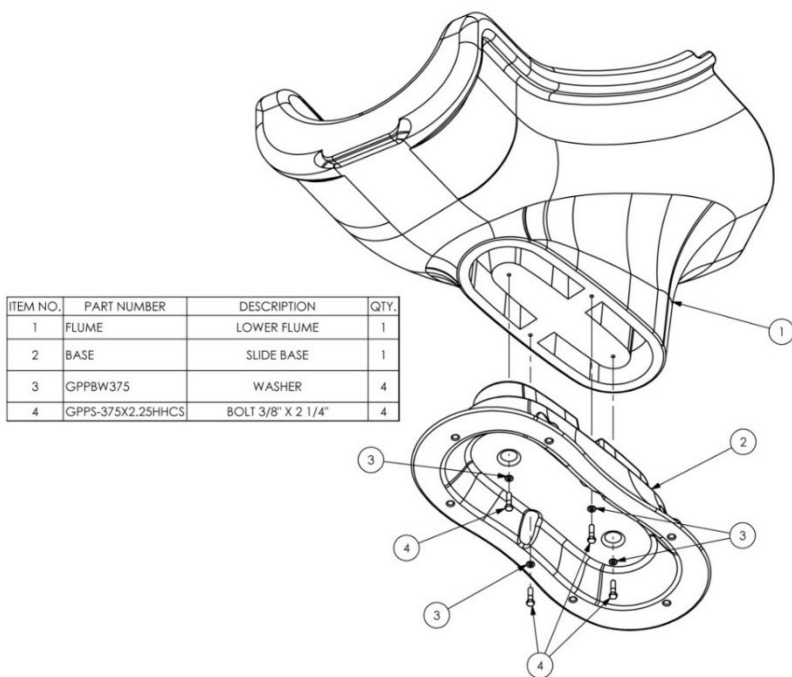
9. Drive all anchors through the slide anchoring holes on both the pedestal and support pole locations.
10. Expand anchors by tightening the nuts three to five turns. When the anchor is set, remove the nut and install a lock washer, then retighten the nut to specified torque.

Global Pool Products
1330 Pigeon Rd
Bad Axe, MI 48413
P: 989-269-5900 - TF: 866-712-0606
Fax: 989-269-5902
www.global-poolproducts.com

Information contained in this document is proprietary and confidential to Global Pool Products and not to be reproduced without written consent from Global Pool Products.



“Global Pool Products is committed to engineering and manufacturing world class products in the pool industry”

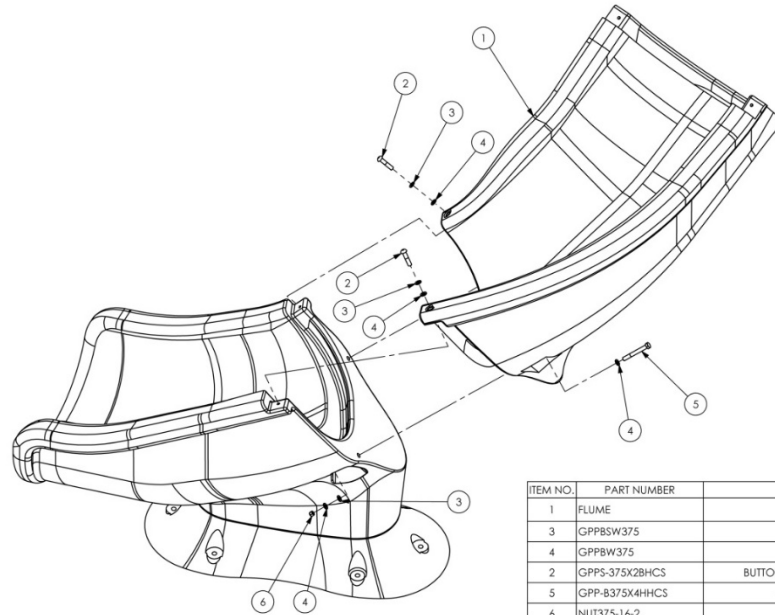


Global Pool Products
 1330 Pigeon Rd
 Bad Axe, MI 48413
 P: 989-269-5900 - TF: 866-712-0606
 Fax: 989-269-5902
www.global-poolproducts.com

Information contained in this document is proprietary and confidential to Global Pool Products and not to be reproduced without written consent from Global Pool Products.



"Global Pool Products is committed to engineering and manufacturing world class products in the pool industry"



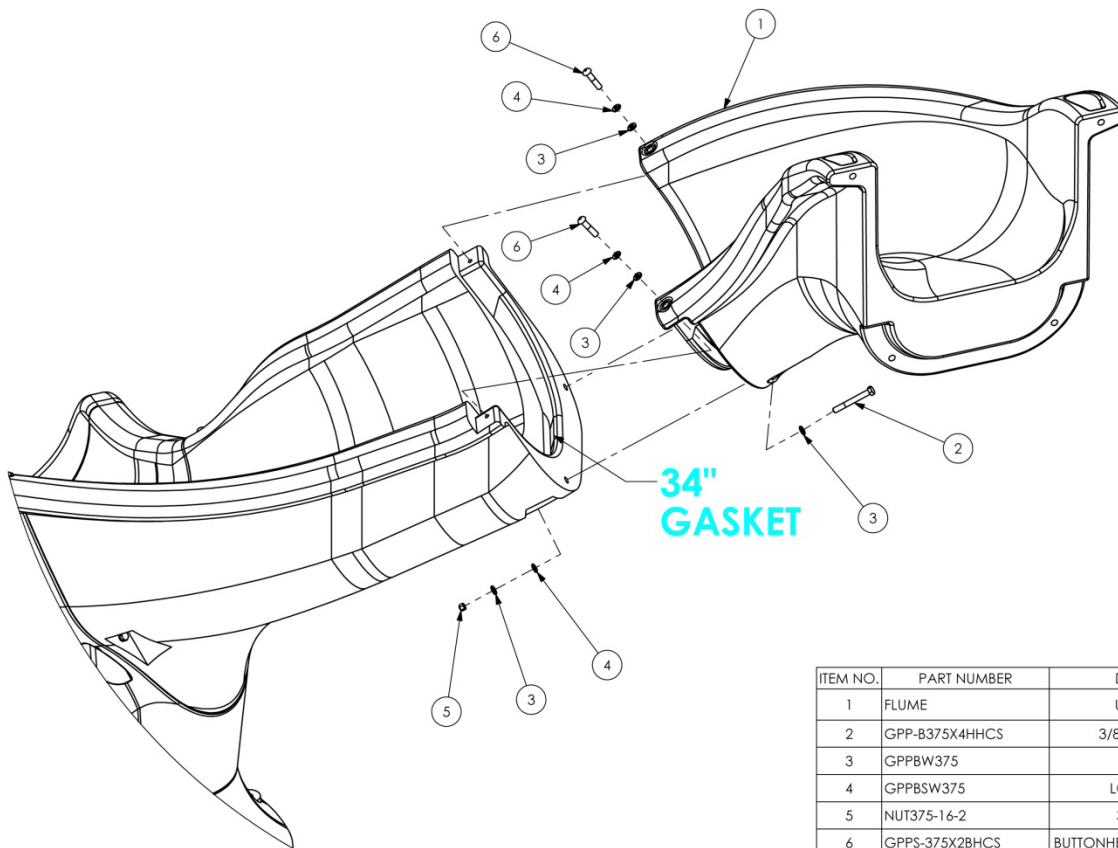
ITEM NO.	PART NUMBER	DESCRIPTION	QTY.
1	FLUME	RIP TIDE FLUME	1
3	GPPB5W375	LOCK WASHER	4
4	GPPB8W375	WASHER	6
2	GPP5-375X2BHCS	BUTTONHEAD BOLT 3/8" X 2 1/4"	2
5	GPP-B375X4HHCS	3/8" X 4" HEX BOLT	2
6	NUT375-16-2	3/8" HEX NUT	2

Global Pool Products
 1330 Pigeon Rd
 Bad Axe, MI 48413
 P: 989-269-5900 - TF: 866-712-0606
 Fax: 989-269-5902
www.global-poolproducts.com

Information contained in this document is proprietary and confidential to Global Pool Products and not to be reproduced without written consent from Global Pool Products.



"Global Pool Products is committed to engineering and manufacturing world class products in the pool industry"



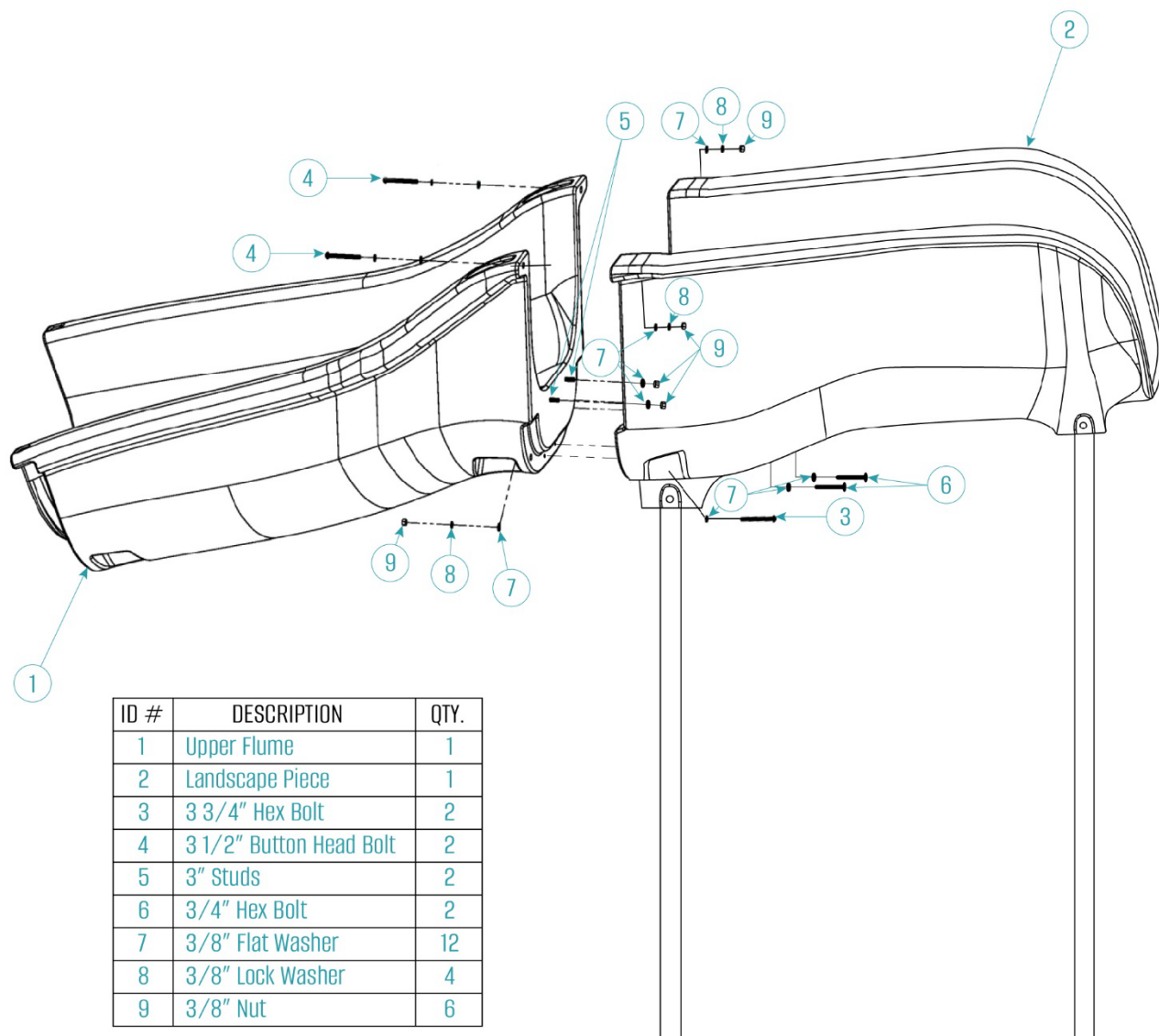
ITEM NO.	PART NUMBER	DESCRIPTION	QTY.
1	FLUME	UPPER FLUME	1
2	GPP-B375X4HHCS	3/8" X 4" HEX BOLT	4
3	GPPBW375	WASHER	6
4	GPPBSW375	LOCK WASHER	4
5	NUT375-16-2	3/8" HEX NUT	4
6	GPPS-375X2BHCS	BUTTONHEAD BOLT 3/8" X 2 1/4"	4

Global Pool Products
 1330 Pigeon Rd
 Bad Axe, MI 48413
 P: 989-269-5900 - TF: 866-712-0606
 Fax: 989-269-5902
www.global-poolproducts.com

Information contained in this document is proprietary and confidential to Global Pool Products and not to be reproduced without written consent from Global Pool Products.



"Global Pool Products is committed to engineering and manufacturing world class products in the pool industry"



ID #	DESCRIPTION	QTY.
1	Upper Flume	1
2	Landscape Piece	1
3	3 3/4" Hex Bolt	2
4	3 1/2" Button Head Bolt	2
5	3" Studs	2
6	3/4" Hex Bolt	2
7	3/8" Flat Washer	12
8	3/8" Lock Washer	4
9	3/8" Nut	6

Global Pool Products
 1330 Pigeon Rd
 Bad Axe, MI 48413
 P: 989-269-5900 - TF: 866-712-0606
 Fax: 989-269-5902
www.global-poolproducts.com

Information contained in this document is proprietary and confidential to Global Pool Products and not to be reproduced without written consent from Global Pool Products.