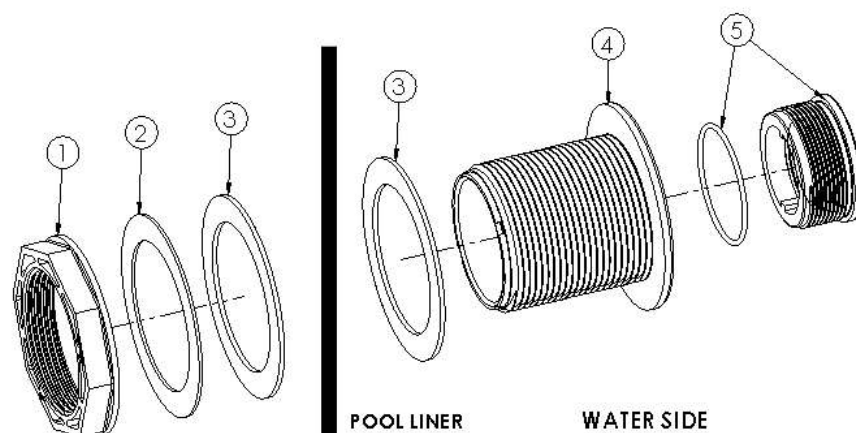




INSTALLATION INSTRUCTIONS: MODEL SP1023S2

- ▲ **WARNING** - This is an INLET fitting. Suction in suction outlets and/or suction outlet covers which are, damaged, broken, cracked, missing, or unsecured can cause severe injury and/or death.
- ▲ **CAUTION** - Components such as the filtration system, pumps and heater must be positioned so as to prevent their being used as means of access to the pool by young children.
- ▲ **WARNING** - Hazardous Pressure - Operate or testing the circulation system at more than 50 PSI can cause equipment damage or bodily harm. Do not test or operate circulation system at more than 50 PSI.
- ▲ **WARNING** - Hazardous Pressure - Never change the filter control valve position while the pump is running. Changing filter control valve while the pump is running can cause equipment damage or bodily injury.

1. Inlet fittings for a pool with a vinyl liner and for fiberglass pools are provided with a Flanged Nut and two (2) gaskets and a washer. The gaskets should be placed such that they sandwich the liner or fiberglass, that is, one gasket on each side. The fitting body passes through both gaskets, the liner, the washer and finally the nut. The flange is on the inside of the pool. See diagram below.
2. The hole size should be between 2.870" and 2.905" in diameter. Usually a 2-7/8" hole will work. Be careful not to tear the liner.
3. A small amount of silicone sealant applied to the gaskets on the liner side will aid in sealing.
4. The Body is manufactured from PVC. Use PVC primer and Solvent cement. While still wet, twist a 1/4 rotation and hold for approximately 30 seconds.



Item	Spare Part Numbers	Description	Number Required
1	SPX1023BS2	FLANGED NUT	1.00
2	SPX1023Z3S2	FIBER WASHER	1.00
3	SPX0023Z1S2	GASKET	2.00
4		BODY	1.00
5	SPX1408ADT	FITTING – ADAPTER WITH O-RING	1.00

Hayward Pool Products
 Division Street, Elizabeth, NJ 07207
 Phone: (908) 351.5400
www.haywardpool.com