

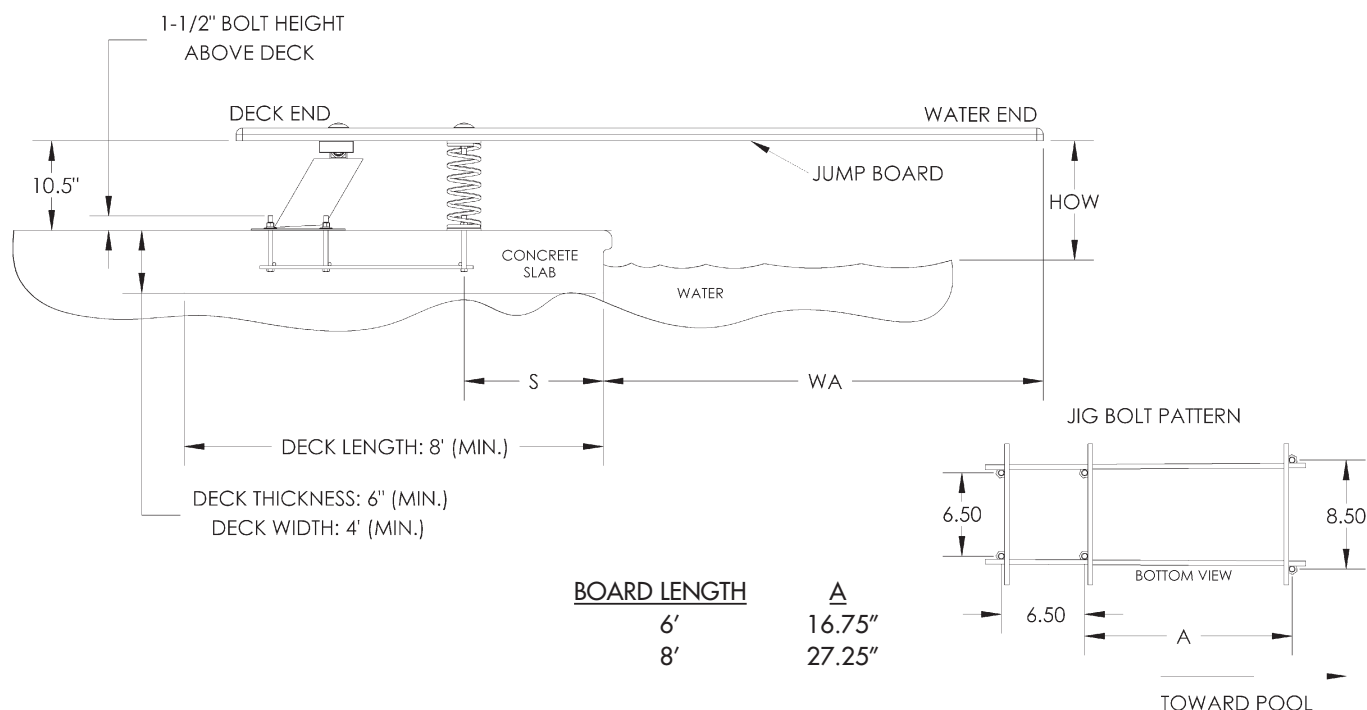
BAJA JUMP STAND:



Part # BA-6C (Complete 6' kit w/stand & coil spring, jig & hardware) } Must order board separately:
 Part # BA-8C (Complete 8' kit w/stand & coil spring, jig & hardware) } BA6WW or BA8WW
 See page 117 for paver jig info.
 Compatible with Epoxy Mounting Kit Part # EPX-5 (must order 2 kits)

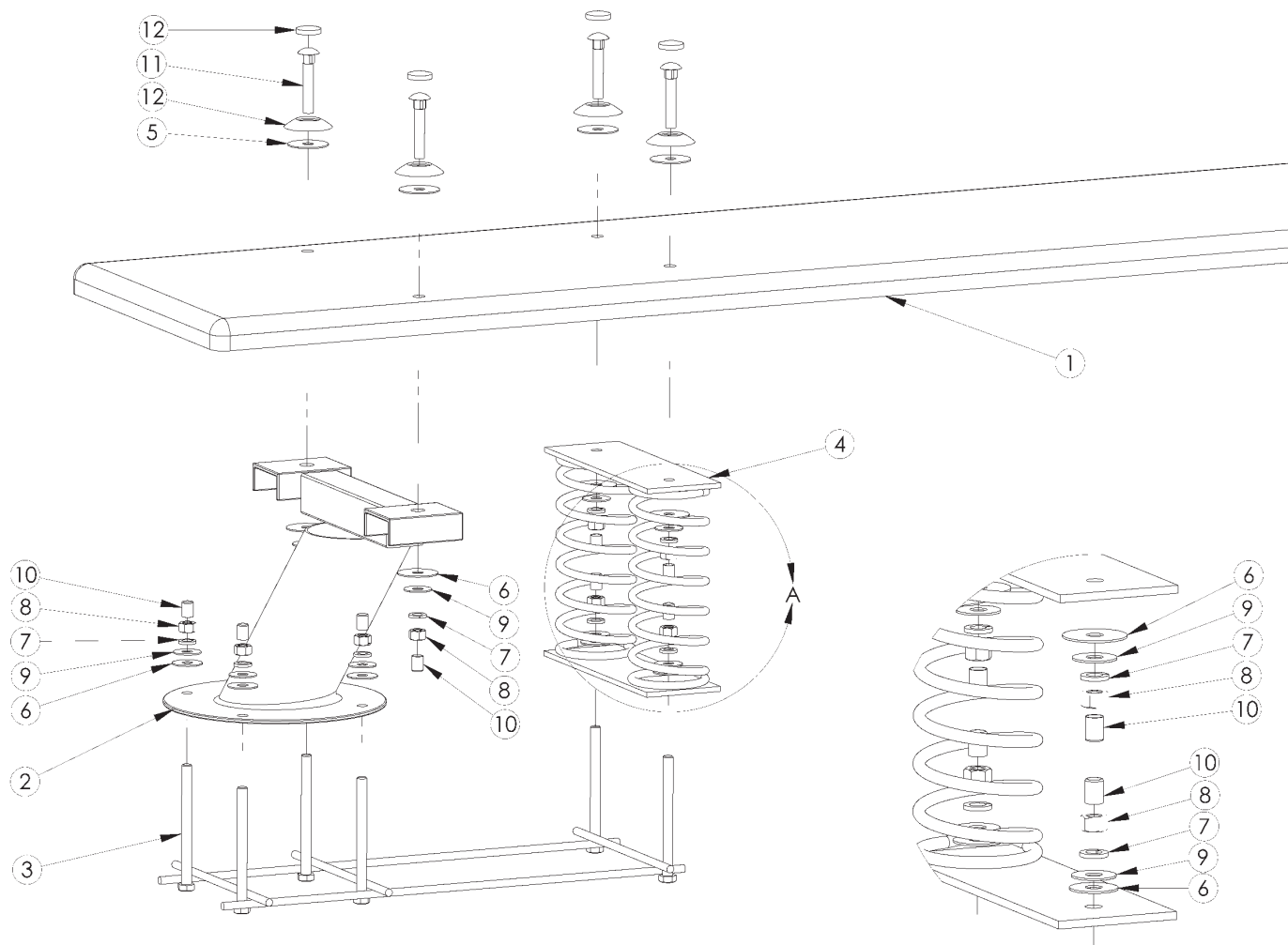
FEATURES:

- Active Base - Spring Feature is Derived from Both Base & Board
- Powder Coated Steel Base
- Dual Powder Coated Coil Springs
- Weight Limit = 250 lbs.
- Available in 6' or 8' Set-Ups
- 4 Hole Drill Pattern
- Refer to Board Chart on Pg. 7
- Refer to Available Base Colors on Pg. 7



<p>IMPORTANT: THESE DIMENSIONS ARE ACCURATE ONLY FOR VERTICAL POOL WALLS, TYPICALLY GUNITE CONSTRUCTION, WITH LESS THAN A 3' RADIUS TO THE POOL FLOOR. DUE TO THE VARYING SIZES OF OTHER POOLS, TYPICALLY VINYL LINER CONSTRUCTION, PLEASE CONTACT CUSTOMER SERVICE FOR PROPER JIG PLACEMENT. 1-800-737-5386</p>	BAJA PART #	NOMINAL BOARD LENGTH	ANSI/ POOL TYPE	DISTANCE FROM WATER'S EDGE TO FORWARD JIG BOLT (S)	DISTANCE FROM END OF BOARD TO FORWARD JIG BOLT	MIN. OVERHANG PLUS OR MINUS 3" (WA)	MAX HEIGHT OF BOARD ABOVE WATER (HOW)
	BA-6C	6'	I	25"	43"	18"	20"
	BA-6C	6'	II	25"	43"	18"	20"
	BA-6C	6'	III	19"	43"	24"	26"
	BA-6C	6'	IV	13"	43"	30"	30"
	BA-6C	6'	V	7"	43"	36"	40"
	BA-8C	8'	I	NOT ALLOWED			
	BA-8C	8'	II	NOT ALLOWED			
	BA-8C	8'	III	32"	63.75"	24"	26"
	BA-8C	8'	IV	26"	63.75"	30"	30"
	BA-8C	8'	V	20"	63.75"	36"	40"

BAJA JUMP STAND (BA-6C):



DRAWING REPRESENTS THE FOLLOWING PART NUMBERS:

BA-6C (shown)
BA-8C

DETAIL A

ITEM #	COMPONENT	DESCRIPTION	KITS - QTY. COUNTS					
			BA-B	BA-BK	BA-J6	BA-M	BA-S	BA-SM
1	BA6WW	6' Baja Jump Board White w/ White Top Tread & Hdw Kit						
2	BA-B	Baja Base	1					
3	BA-J6	6' Baja Jig			1			
4	BA-S	Baja Dual Coil Spring					1	
5	H-1/2 BLK WASH	1/2 x 2" Black Rubber Washer				4		
6	H-1/2 NYLON WAS	1/2" Flat Washer Nylon		4		4		2
7	H-SS 1/2 LOC WA	1/2 Lock Washer S.S.		4		4		2
8	H-SS 1/2 H NUT	1/2"- 13 Hex Finish Nut S.S.		4		4		2
9	H-SS 1/2 F WAS	1/2 USS Flat Washer S.S.		4		4		2
10	H-1-1/2 WHT CAP	.750 x 1-1/2 White UV Nut Cap		4		4		2
11	H-SS 3 C BOLT	1/2-13 x 3" Carriage Bolt S.S.				4		
	H-WHT WAS/CAP	I.F. White Washer Cap				4		
13*	H-ANTI-SEIZE	Packet of Anti Seize Lubricant (not shown)				1		

* not pictured

BA-BK:
Base to Jig
Mounting Hardware

BA-M:
Board to Base &
Spring Mounting
Hardware

BA-SM:
Springs to Base
Mounting Hardware

NOTES:

BA6WW diving board shown in exploded view for illustration purposes. Must be purchased separately.

Check your local electrical code requirements for bonding requirements.