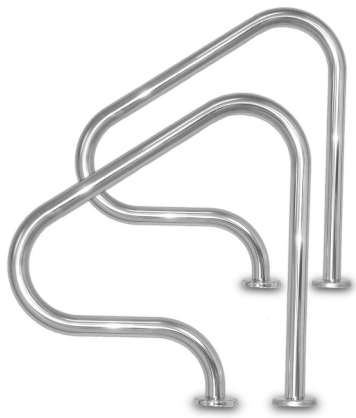


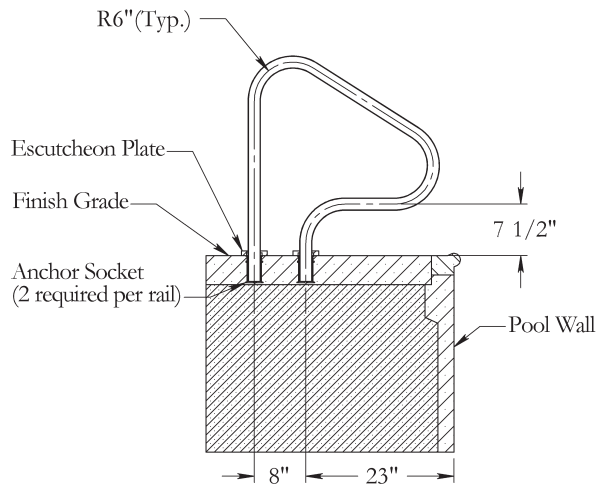
## FIGURE 4 GRAB RAIL:



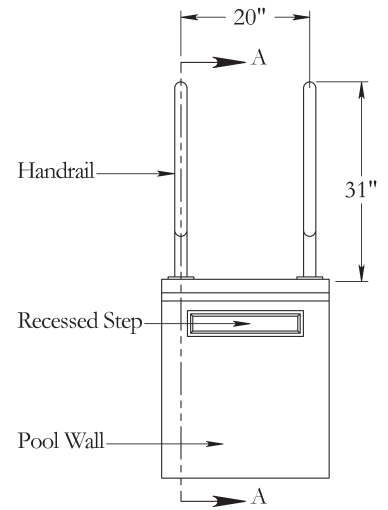
Part # G3D049 (pair)  
 Part # G3D049single (single rail only)  
 Part # G3D065 (pair, .065" wall)

### FEATURES:

- .049" Wall Stainless Steel Construction
- 304 SS
- 1.90" OD



SECTION A-A

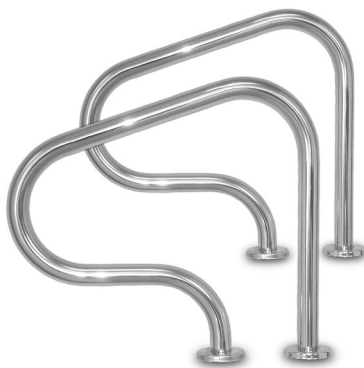


ELEVATION

**NOTE: This product sold as pairs.**

**NOTE:** Escutcheons sold separately w/ss products; included with powder coated ladders and rails. All measurements on center.

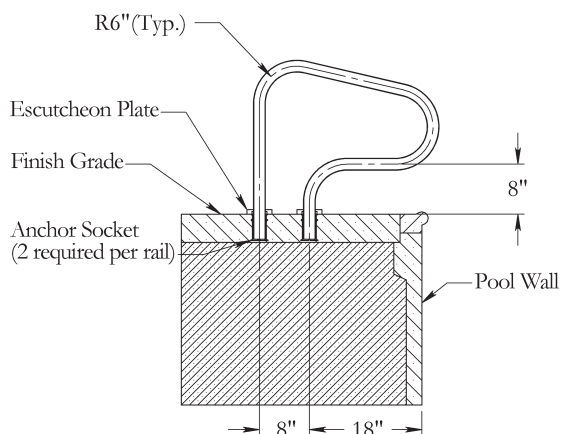
## NEW FIGURE 4 GRAB RAIL:



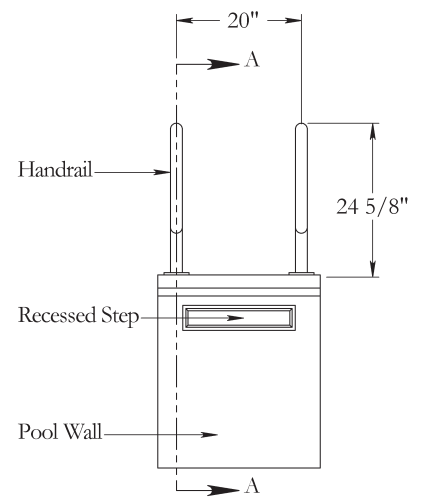
Part # G3DE049 (pair)

### FEATURES:

- .049" Wall Stainless Steel Construction
- NEW Figure 4 Grab Rail is 7" Shorter in Height than Figure 4 Grab Rail
- 304 SS
- 1.90" OD



SECTION A-A



ELEVATION

**NOTE: This product sold as pairs.**

**NOTE:** Escutcheons sold separately w/ss products; included with powder coated ladders and rails. All measurements on center.