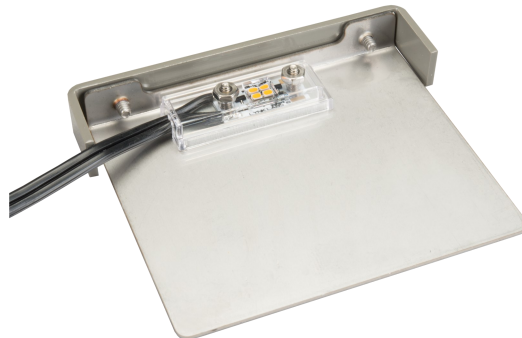


Model IL4.xxx.500



IL4.250.500 Clay finish shown



Construction

- 4.0" width x 0.50" height x 0.875" depth
- Faceplates are heavy duty and field replaceable
 - Solid Copper or Brass .090 thick
 - Stainless Steel 18 gauge alloy 304
 - Aluminum .090 thick alloy 5052T
- Self leveling insert is heavy 18 gauge 304 Stainless Steel
- 6-32 slotted Stainless Steel screws
- Holes threaded to insert plate
- UL 1838 Listed Product

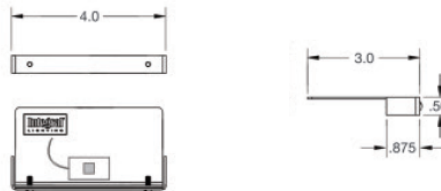


Electrical



- 1.0 watt LED package
- 3000K white output
- Filters available for 2700K or 4200K output
- Life expectancy up to 40,000 hours
- Output similar to 5.0 watts
- Lumen output 60
- Fully dimmable LEDs
- Low voltage 12vAC operation
- Compatible with all low voltage lighting systems
- 72" long 18/2 leads for connection
- Magnetic or electronic transformer compatible

Dimensions



dimensions are approximate



19 Finishes

