

FINEST FILTERS



LASER®

For Above and Inground pools



CARVIN
POOL EQUIPMENT

FEATURES

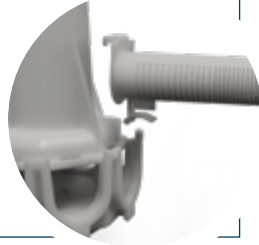


Non-Corrosive Resin Clamp

For simple installation and service of dial valve and filter components.

Exclusive Snap Fit Lateral Design

Snap fit laterals allow a fast, easy and secure installation.



- **Upper Distribution System Integrated in the Dial Valve.** Engineered to direct water evenly across the entire surface of the sand without sand migration or channelling.
- **Blow Molded Tank with Deep High-Capacity Sand Bed.** Carries more debris and extends filter cycles. The tank is corrosion and UV resistant.
- **Two Type Connection.** 1½" FNPT connection and external 2½" MBT threads for unions.
- **7 Way Dial Valve.** With inspection sight glass, automatic air relief and pressure gauge.



FILTRATION



BACKWASH



RINSE



WHIRLPOOL



DRAIN



TEST

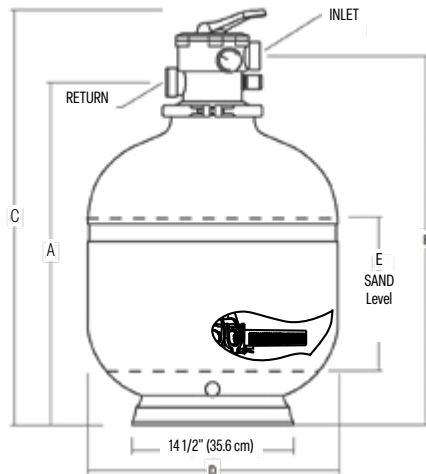


WINTERIZE

INCLUDED

- Hose and Hardware.
- Dial Valve for Model 1.5" (-7C) or Dial Valve for Model 2" (-7C).

DIMENSIONS



Model No.	A	B	C	D	E
L160C-7C	26¼ (66,7)	28¾ (73)	33 (83,8)	16 (40,6)	13 (33)
L192C-7C	30 (76,2)	32½ (82,6)	36¾ (93,3)	19 (48,3)	12½ (31,8)
L225C-7C	30¾ (78,1)	33¼ (84,5)	37½ (95,3)	22½ (57,2)	11½ (29,2)
L250C-7C	34 (86,4)	36¾ (92,7)	40¾ (103,5)	25 (63,5)	13¾ (34,3)
TM25-7C	34 (86,4)	36¾ (92,7)	42 (106,7)	25 (63,5)	13¾ (34,3)

TECHNICAL SPECIFICATIONS

Model No.	Item No.	Filter Area	Inlet / Return (in)	Filter Flow Rate (GPM)	Max Working Pressure PSI (BAR)	Total Gallons Circulated (m3)		Sand lbs. (Kg)
						6 Hours	8 Hours	
L160C-7C	94089160	1.33 (0,12)	1.5	33.25	35 (2,4)	12 000 (45)	16 000 (60)	140 (64)
L192C-7C	94089192	1.87 (0,17)	1.5	46.75	50 (3,4)	16 800 (63)	22 400 (85)	200 (91)
L225C-7C	94089225	2.64 (0,25)	1.5	66	50 (3,4)	23 800 (90)	31 700 (120)	250 (113)
L250C-7C	94089250	3.30 (0,31)	1.5	82.5	50 (3,4)	29 700 (112)	39 600 (150)	350 (159)
TM25-7C	94089262	3.30 (0,31)	2	82.5	50 (3,4)	29 700 (112)	39 600 (150)	350 (159)

Maximum residential flow rate : 25 GPM / sq.ft. (61 m3 / h / m2).

Recommended sand #20 silica sand (0,40 mm to 0,55 mm effective size).