

# Why FROG® Test Strips?

# Fresh Mineral Water Easy™

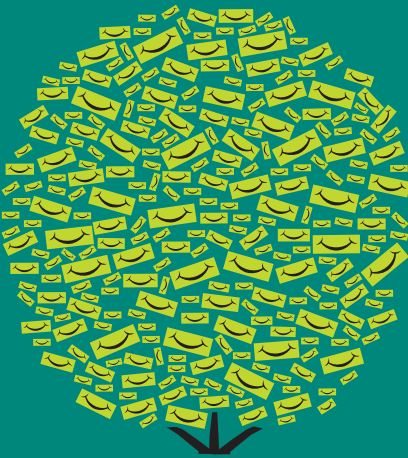
- It's the only way to ensure Fresh Mineral Water
- It's the only strip with the ideal chlorine range for FROG pools
- Most test strips show this level as too low, causing confusion
- FROG Test Strips help dial in the right setting for your pool
- The result: Your chlorine Bac Pacs will last up to 50% longer!
- Using standard test strips can lead to over chlorination and wasting money.



FROG Test Strips					
ppm FREE CHLORINE					
0	0.5	1	3	5	
← IDEAL →					
Standard Strips					
ppm FREE CHLORINE					
0	0.5	1	3	5	
← LOW →		← OK →			

Ideal FROG® Range

Their OK Range is TOO High!



XL PRO® SYSTEM FOR SWIMMING POOLS  
UP TO 40,000 GALLONS

## Cleaner, Clearer, Softer. It's Easier too!



King Technology, Inc.  
952-933-6118 • 800-222-0169 • [www.KingTechnology.com](http://www.KingTechnology.com)  
Patents: [www.KingTechnology.com/IP](http://www.KingTechnology.com/IP)  
EPA REG. NO. 53735-11 EPA EST. NO. 071209-AZ-001 20-48-0556 553111443NR6N



# Fresh Mineral Water Easy™

## XL PRO®

For Pools up to 40,000 Gallons



### Cleaner

The enemy is bacteria

FROG® destroys bacteria 2 ways with minerals and low levels of chlorine for an ultra clean pool



### Clearer

Helps maintain pH balance and uses up to 50%\* less chlorine for better water clarity

### Softer



Minerals condition the water for softness so it's easier on you and on your pool and hot tub with no faded swimsuits or smelly odors



### Easier

You never touch chemicals with pre-filled containers that last longer for less work and are recyclable when empty



Set Mineral Cyclier to Max

Set Chlorine Cyclier per pool size and use



#### POOL FROG® MINERAL RESERVOIR

Maintains clearer, cleaner and softer water with much less chlorine. Lasts 6 months.



#### POOL FROG® CHLORINE PAC

Provides a low-level chlorine support that lasts for weeks.



#### FROG BAM®

Enhances mineral water with a 90-day algae protection guarantee.

\* Compared to the minimum EPA recommended chlorine level of 1.0 ppm for a stabilized swimming pool.