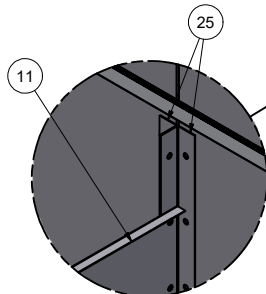
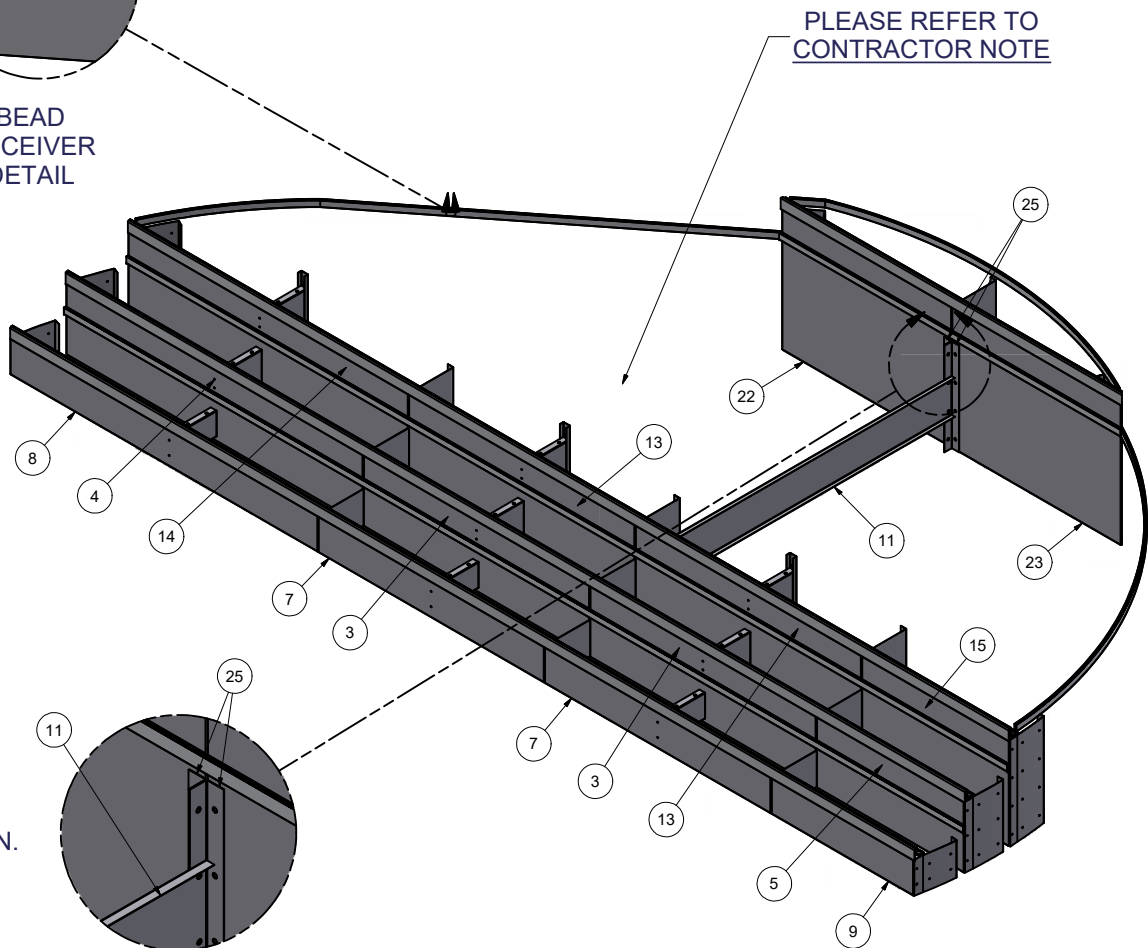
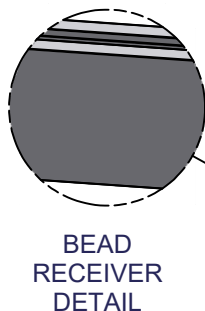


Parts List

ITEM	QTY	PART NUMBER	DESCRIPTION
1	83	COP-KCVRET-W-1	COP COPING STIFFENER 1 5/8"-1PC
2	3	ESC-11156-B	BRACE, 3 - RISER SUPPORT
3	2	ESC-11156-BMR	STRAIGHT, BOTTOM MIDDLE RISER
4	1	ESC-11156-BMRL	STRAIGHT, BOTTOM MIDDLE RISER, LEFT
5	1	ESC-11156-BMRR	STRAIGHT, BOTTOM MIDDLE RISER, RIGHT
6	3	ESC-11156-BMRS	BRACE, BOTTOM MIDDLE RISER SUPPORT
7	2	ESC-11156-BR	STRAIGHT, BOTTOM RISER
8	1	ESC-11156-BRL	STRAIGHT, BOTTOM RISER, LEFT
9	1	ESC-11156-BRR	STRAIGHT, BOTTOM RISER, RIGHT
10	3	ESC-11156-BRS	BRACE, BOTTOM RISER SUPPORT
11	1	ESC-11156-CB	BRACE, CENTER SUPPORT
12	3	ESC-11156-DS	BRACE, DRIVE STAKE CHANNEL SET
13	2	ESC-11156-MR	STRAIGHT, MIDDLE RISER
14	1	ESC-11156-MRL	STRAIGHT, MIDDLE RISER, LEFT
15	1	ESC-11156-MRR	STRAIGHT, MIDDLE RISER, RIGHT
16	3	ESC-11156-MRS	BRACE, MIDDLE RISER SUPPORT
17	2	ESC-11156-SSBM	BRACE, SIDE SUPPORT PLATE, BOTTOM, MIDDLE
18	2	ESC-11156-SSPB	BRACE, SIDE SUPPORT PLATE, BOTTOM
19	2	ESC-11156-SSPM	BRACE, SIDE SUPPORT PLATE, MIDDLE
20	1	ESC-11156-SSTL	BRACE, SIDE SUPPORT PLATE, TOP, LEFT
21	1	ESC-11156-SSTR	BRACE, SIDE SUPPORT PLATE, TOP, RIGHT
22	1	ESC-11156-TRL	STRAIGHT, TOP RISER, LEFT
23	1	ESC-11156-TRR	STRAIGHT, TOP RISER, RIGHT
24	1	ESC-11156-TRS	BRACE, TOP RISER SUPPORT
25	2	ESC-7341-BB	BRACE, 90° L BRACKET
26	0'	OPC-CONREC-XX	NOTCHED CONCRETE RECEPTOR
27	68'	OPC-CONREC-XXU	UN-NOTCHED CONCRETE RECEPTOR
28	77'	SSC-1099-PFT	STEEL STEP PVC BEAD RETAINER (PER FT)



CONTRACTOR NOTE:

CONTRACTOR IS RESPONSIBLE FOR SECURING ALL RISERS INTO PLACE WITH REBAR HOLES BEFORE BACKFILLING THIS CUSTOM STEP

KEEP BEAD RECEIVER ATTACHED TO THE RISERS AND WALL PANELS FOR SHIPPING. A TOTAL OF 924" (77') OF BEAD RECEIVER IS REQUIRED.

CONTRACTOR MUST FIELD FIT ALL CONCRETE RECEPTOR.

TOTALS REQUIRED FOR THIS CUSTOM PRODUCT APPLICATION.

OPC-CONREC-XX (NOTCHED) = 0" (0')

OPC-CONREC-XXU (UN-NOTCHED) = 816" (68')

COP-KCVRET-W-1 (STIFFENER) = 83

CONTRACTOR NOTE:

BACK FILL STEP/ SUNLEDGE AREA WITH COMPACTED EARTH MATERIAL. FINISH STEP/ SUNLEDGE AREA WITH 2" OF HARDEN FLOOR MATERIAL TO MATCH REQUIRED DEPTH (FLUSH WITH TOP OF BEAD RECEIVER).

CONTRACTOR NOTE:

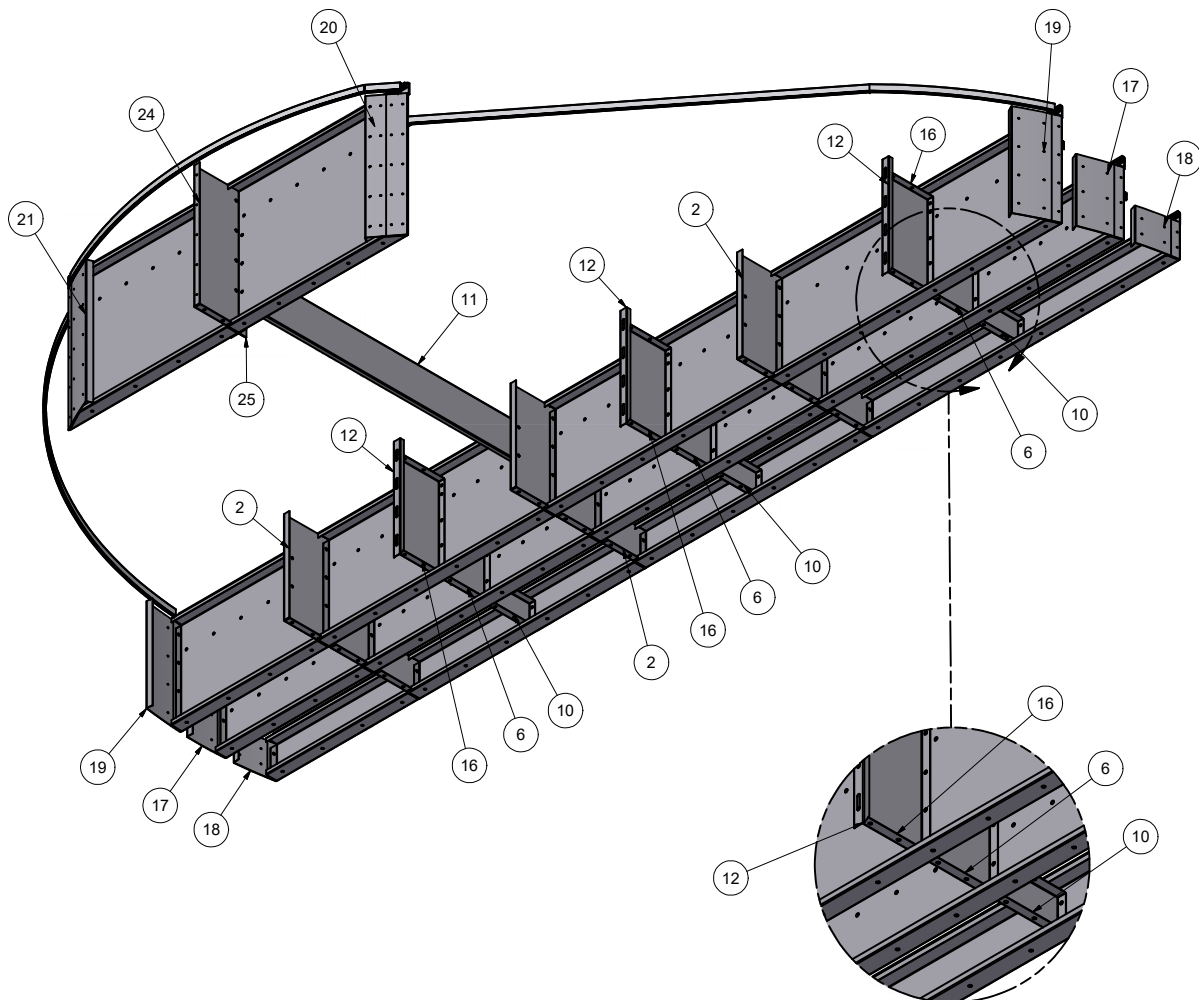
CONTRACTOR IS RESPONSIBLE FOR ATTACHING STEP/ SUNLEDGE TO EXISTING POOL WALL AND COVERING FASTENERS. CONTRACTOR IS ALSO RESPONSIBLE FOR PROVIDING HARDWARE TO ATTACH STEP/ SUNLEDGE TO EXISTING POOL WALL.

19'-11 3/4"X10'X8'-6"R OPEN TOP DROP IN STEP W/7' MIDDLE TREAD

<div><div>PART #:</div><div>ESC-11156</div></div>	<div><div>WEIGHT:</div><div>613.29 lbmass</div></div>	<div><div>MACHINE TIME:</div><div>N/A</div></div>	<div><div>FILE/DIRECTORY:</div><div>C:\Vault\FTW\Design\CUSTOM STEPS\ESC-11000-11999\ESC-11156.idw</div></div>		
	<div><div><div><div><div></div><div>latham</div><div>The Pool Company</div></div></div></div></div>	<div><div>TOLERANCES EXCEPT AS NOTED</div><div>0/0 0.0 0.00 0.000 0"</div><div>±1/8 ±0.25 ±0.0625 ±0.03125 ±1/2"</div></div>	<div><div>MATERIAL:</div><div></div></div>	<div><div>DATE :</div><div>8/17/2020</div></div>	<div><div>NOTES:</div><div></div></div>
<div><div>DRAWN BY:</div><div>MT</div></div>		<div><div>SHEET :</div><div>1 OF 30</div></div>			


Parts List

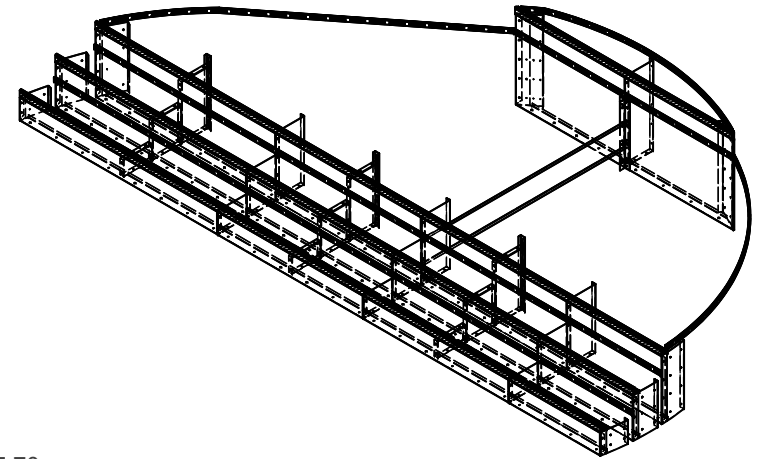
ITEM	QTY	PART NUMBER	DESCRIPTION
1	83	COP-KCVRET-W-1	COP COPING STIFFNER 1 5/8"-1PC
2	3	ESC-11156-B	BRACE, 3 - RISER SUPPORT
3	2	ESC-11156-BMR	STRAIGHT, BOTTOM MIDDLE RISER
4	1	ESC-11156-BMRL	STRAIGHT, BOTTOM MIDDLE RISER, LEFT
5	1	ESC-11156-BMRR	STRAIGHT, BOTTOM MIDDLE RISER, RIGHT
6	3	ESC-11156-BMRS	BRACE, BOTTOM MIDDLE RISER SUPPORT
7	2	ESC-11156-BR	STRAIGHT, BOTTOM RISER
8	1	ESC-11156-BRL	STRAIGHT, BOTTOM RISER, LEFT
9	1	ESC-11156-BRR	STRAIGHT, BOTTOM RISER, RIGHT
10	3	ESC-11156-BRS	BRACE, BOTTOM RISER SUPPORT
11	1	ESC-11156-CB	BRACE, CENTER SUPPORT
12	3	ESC-11156-DS	BRACE, DRIVE STAKE CHANNEL SET
13	2	ESC-11156-MR	STRAIGHT, MIDDLE RISER
14	1	ESC-11156-MRL	STRAIGHT, MIDDLE RISER, LEFT
15	1	ESC-11156-MRR	STRAIGHT, MIDDLE RISER, RIGHT
16	3	ESC-11156-MRS	BRACE, MIDDLE RISER SUPPORT
17	2	ESC-11156-SSBM	BRACE, SIDE SUPPORT PLATE, BOTTOM, MIDDLE
18	2	ESC-11156-SSPB	BRACE, SIDE SUPPORT PLATE, BOTTOM
19	2	ESC-11156-SSPM	BRACE, SIDE SUPPORT PLATE, MIDDLE
20	1	ESC-11156-SSTL	BRACE, SIDE SUPPORT PLATE, TOP, LEFT
21	1	ESC-11156-SSTR	BRACE, SIDE SUPPORT PLATE, TOP, RIGHT
22	1	ESC-11156-TRL	STRAIGHT, TOP RISER, LEFT
23	1	ESC-11156-TRR	STRAIGHT, TOP RISER, RIGHT
24	1	ESC-11156-TRS	BRACE, TOP RISER SUPPORT
25	2	ESC-7341-BB	BRACE, 90° L BRACKET
26	0'	OPC-CONREC-XX	NOTCHED CONCRETE RECEPTOR
27	68'	OPC-CONREC-XXU	UN-NOTCHED CONCRETE RECEPTOR
28	77'	SSC-1099-PFT	STEEL STEP PVC BEAD RETAINER (PER FT)



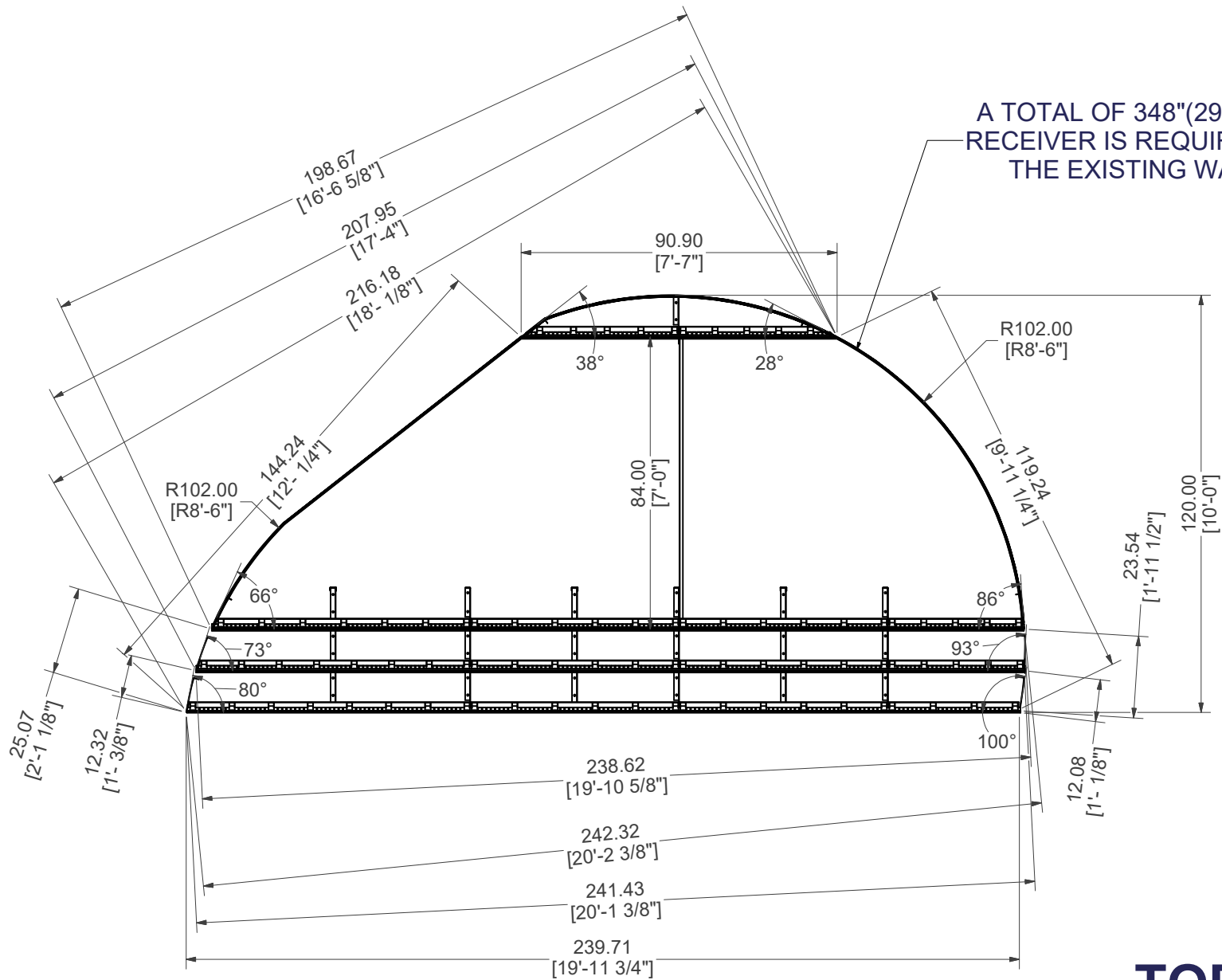
BRACE DETAIL

19'-11 3/4"X10'X8'-6"R OPEN TOP DROP IN STEP W/7' MIDDLE TREAD

PART #: ESC-11156 	WEIGHT: 613.29 lbmass	MACHINE TIME: N/A	FILE/DIRECTORY: C:\Vault\FTW\Design\CUSTOM STEPS\ESC-11000-11999\ESC-11156.idw
	TOLERANCES EXCEPT AS NOTED 0/0 0.0 0.00 0.000 0' ±1/8 ±0.25 ±0.0625 ±0.03125 ±1/2"	MATERIAL: DRAWN BY: MT	DATE : 8/17/2020 SHEET : 2 OF 30 NOTES:




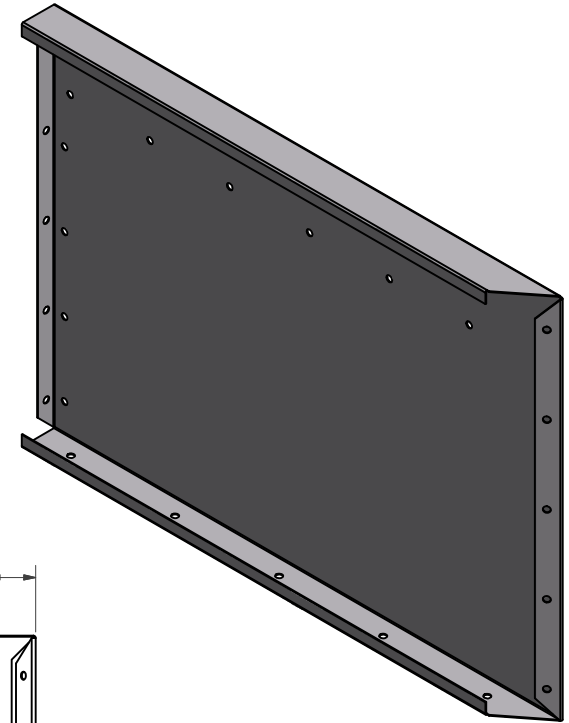
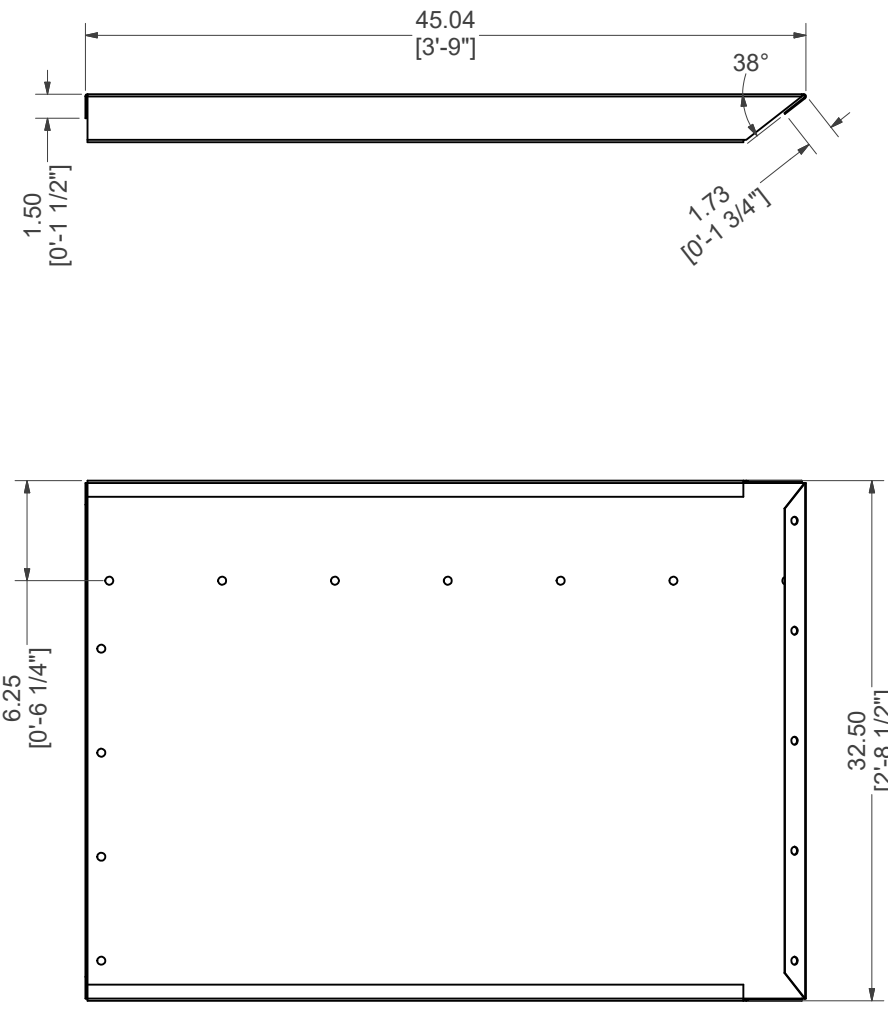
<div><div>PART #:</div><div>ESC-11156</div></div>	<div><div>WEIGHT:</div><div>613.29 lbmass</div></div>	<div><div>MACHINE TIME:</div><div>N/A</div></div>	<div><div>FILE/DIRECTORY:</div><div>C:\Vault\FTW\Design\CUSTOM STEPS\ESC-11000-11999\ESC-11156.idw</div></div>		
	<div><div><div><div><div></div><div>latham</div><div>The Pool Company</div></div></div></div><div><div>TOLERANCES EXCEPT AS NOTED</div><div>0/0 0.0 0.00 0.000 0"</div><div>±1/8 ±0.25 ±0.0625 ±0.03125 ±1/2"</div></div></div>	<div><div>MATERIAL:</div><div></div></div>	<div><div>DATE :</div><div>8/17/2020</div></div>	<div><div>NOTES:</div><div></div></div>	
<div><div>DRAWN BY:</div><div>MT</div></div>	<div><div>SHEET :</div><div>3 OF 30</div></div>				




TOP VIEW

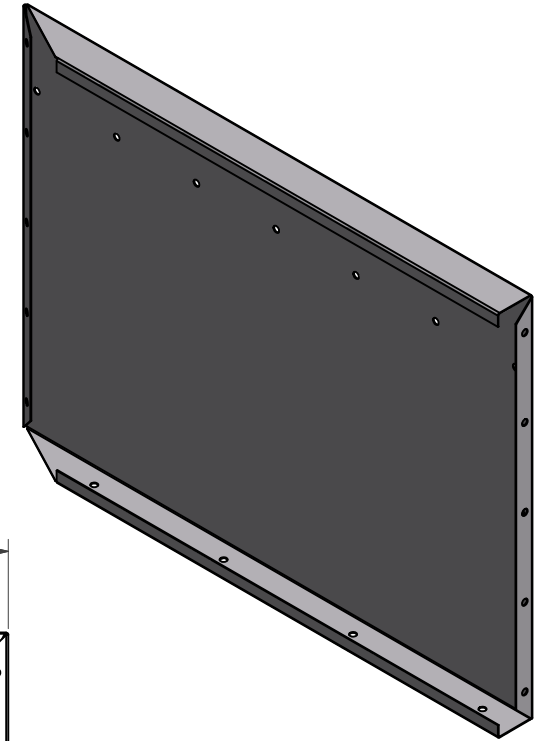
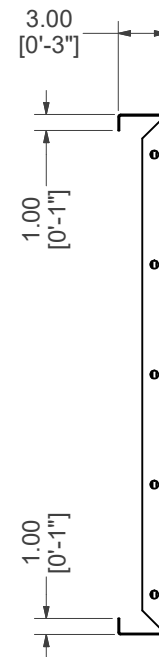
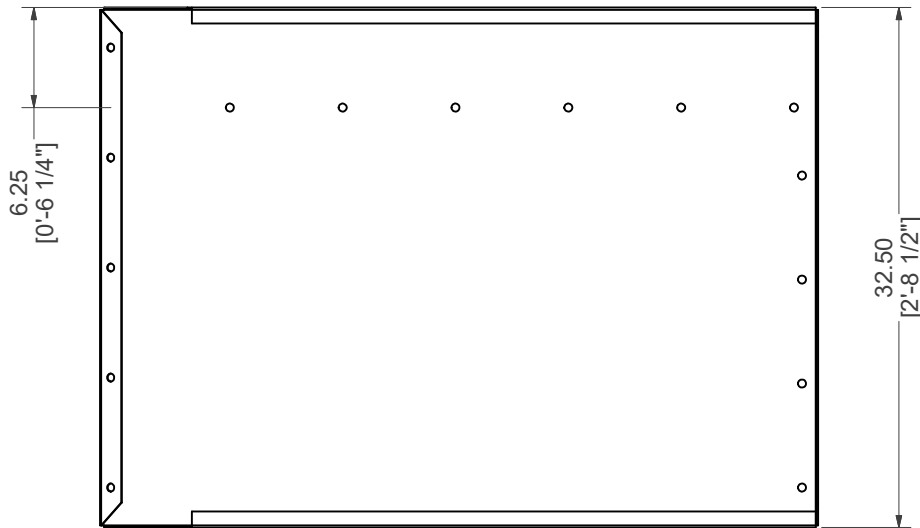
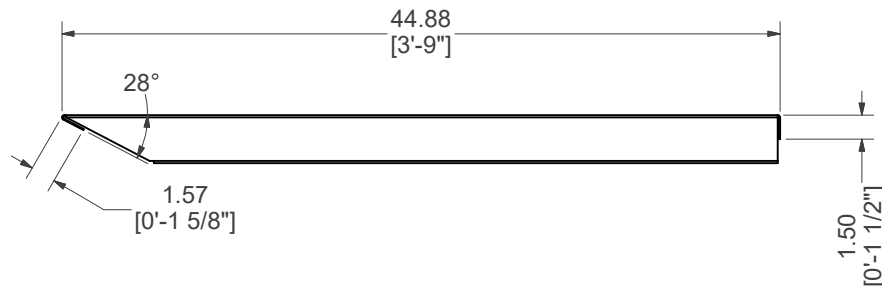
19'-11 3/4"X10'X8'-6"R OPEN TOP DROP IN STEP W/7' MIDDLE TREAD

PART #: ESC-11156	WEIGHT: 613.29 lbmass	MACHINE TIME: N/A	FILE/DIRECTORY: C:\Vault\FTW\Design\CUSTOM STEPS\ESC-11000-11999\ESC-11156.idw	
	TOLERANCES EXCEPT AS NOTED 0/0 0.0 0.00 0.000 0' ±1/8 ±0.25 ±0.0625 ±0.03125 ±1/2"	MATERIAL:	DATE : 8/17/2020	NOTES:
		DRAWN BY: MT	SHEET : 4 OF 30	



STRAIGHT, TOP RISER, LEFT

PART #: ESC-11156-TRL	WEIGHT: 38.07 lbmass	MACHINE TIME: N/A	FILE/DIRECTORY: C:\Vault\FTW\Design\CUSTOM STEPS\ESC-11000-11999\ESC-11156.idw	
	TOLERANCES EXCEPT AS NOTED 0/0 0.0 0.00 0.000 0" ±1/8 ±0.25 ±0.0625 ±0.03125 ±1/2"	MATERIAL: 14 GA. GALVANIZED	DATE : 8/17/2020	NOTES:
		DRAWN BY: MT	SHEET : 5 OF 30	



STRAIGHT, TOP RISER, RIGHT

PART #: ESC-11156-TRR

WEIGHT:
37.68 lbmass

MACHINE TIME:
N/A

FILE/DIRECTORY:

C:\Vault\FTW\Design\CUSTOM STEPS\ESC-11000-11999\ESC-11156.idw

latham
The Pool Company

TOLERANCES EXCEPT
AS NOTED
0/0 0.0 0.00 0.000 0'
±1/8 ±0.25 ±0.0625 ±0.03125 ±1/2"

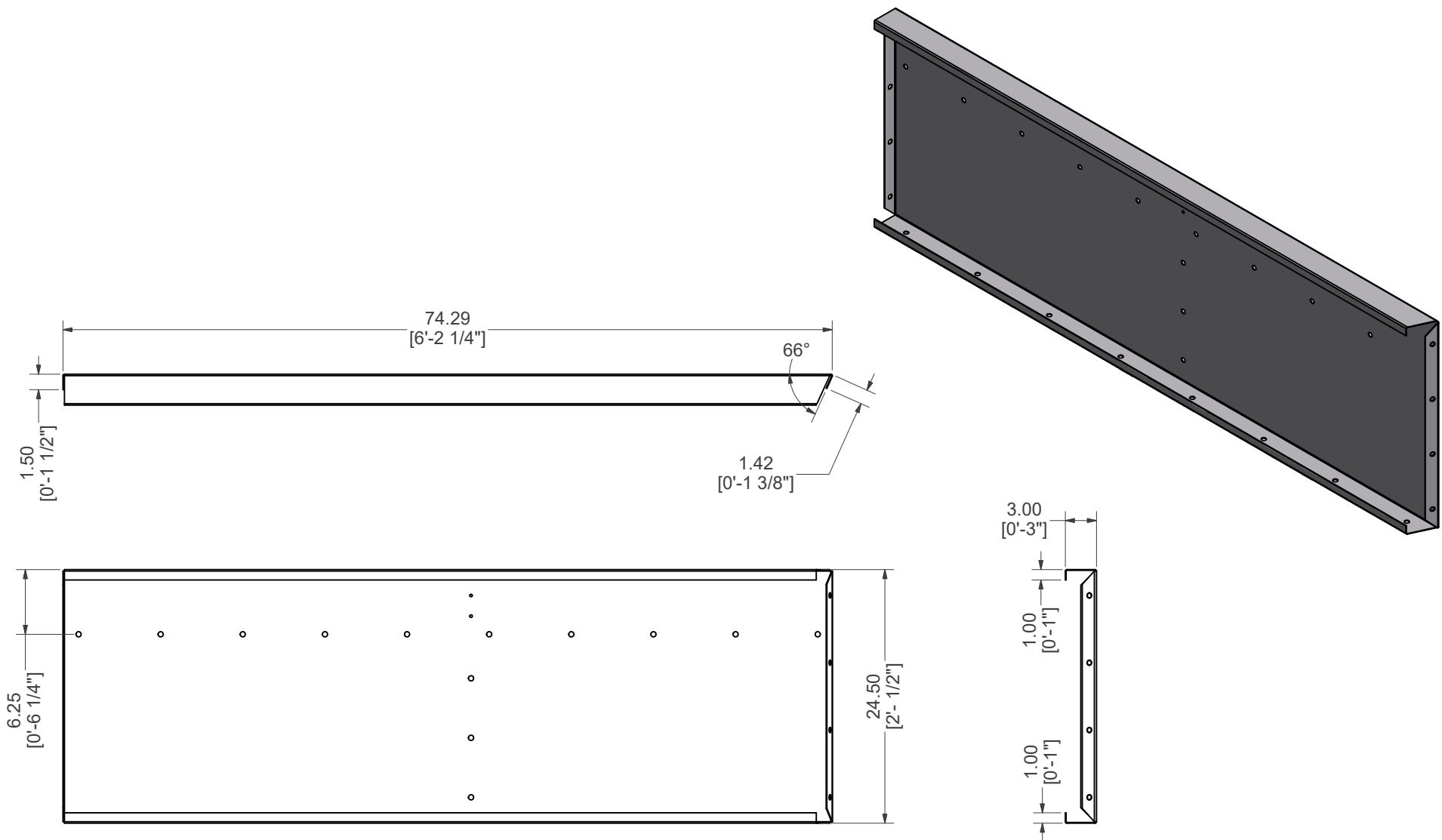
MATERIAL:
14 GA. GALVANIZED

DRAWN BY:
MT


DATE : 8/17/2020

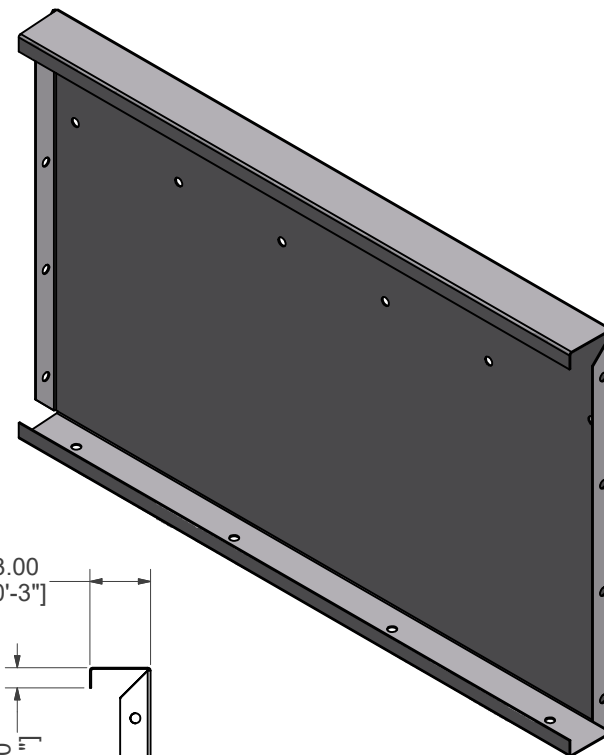
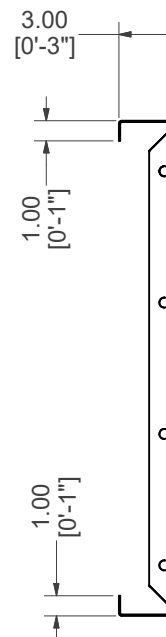
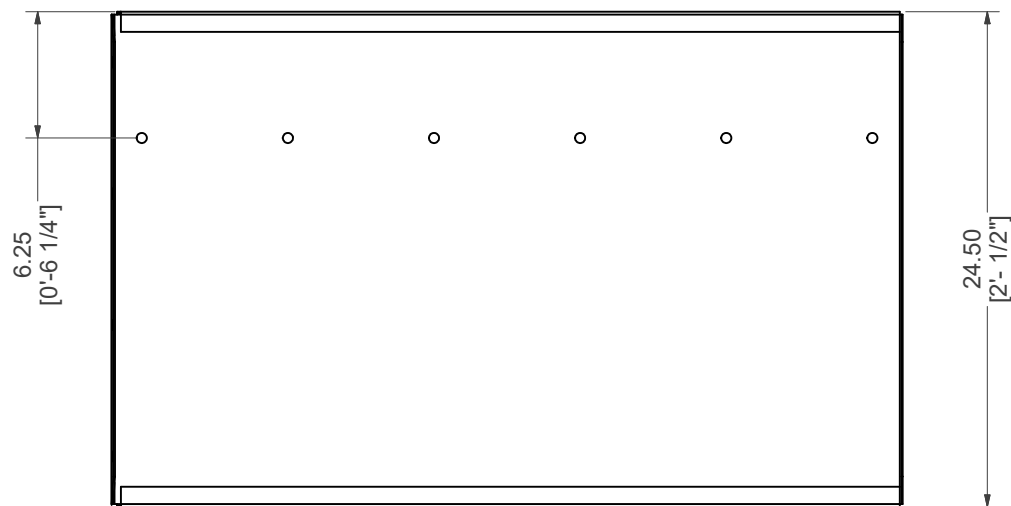
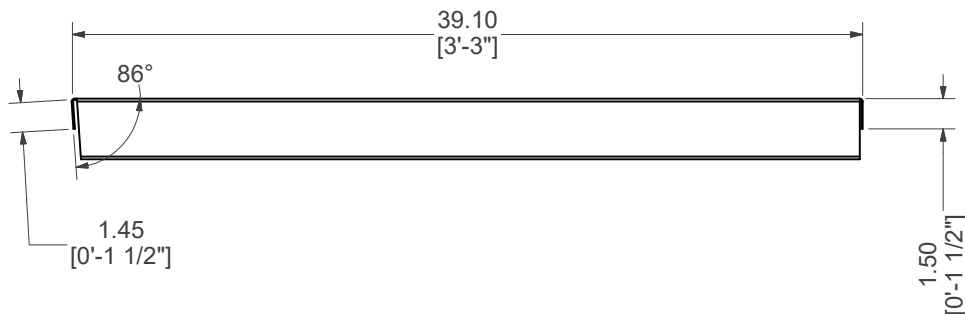
SHEET : 6 OF 30

NOTES:



STRAIGHT, MIDDLE RISER, LEFT

PART #: ESC-11156-MRL	WEIGHT: 49.35 lbmass	MACHINE TIME: N/A	FILE/DIRECTORY: C:\Vault\FTW\Design\CUSTOM STEPS\ESC-11000-11999\ESC-11156.idw	
	TOLERANCES EXCEPT AS NOTED 0/0 0.0 0.00 0.000 0' ±1/8 ±0.25 ±0.0625 ±0.03125 ±1/2"	MATERIAL: 14 GA. GALVANIZED	DATE : 8/17/2020	NOTES:
		DRAWN BY: MT	SHEET : 7 OF 30	



STRAIGHT, MIDDLE RISER, RIGHT

PART #: ESC-11156-MRR

WEIGHT:
26.61 lbmass

MACHINE TIME:
N/A

FILE/DIRECTORY:

C:\Vault\FTW\Design\CUSTOM STEPS\ESC-11000-11999\ESC-11156.idw

latham
The Pool Company

TOLERANCES EXCEPT
AS NOTED
0/0 0.0 0.00 0.000 0'
±1/8 ±0.25 ±0.0625 ±0.03125 ±1/2"

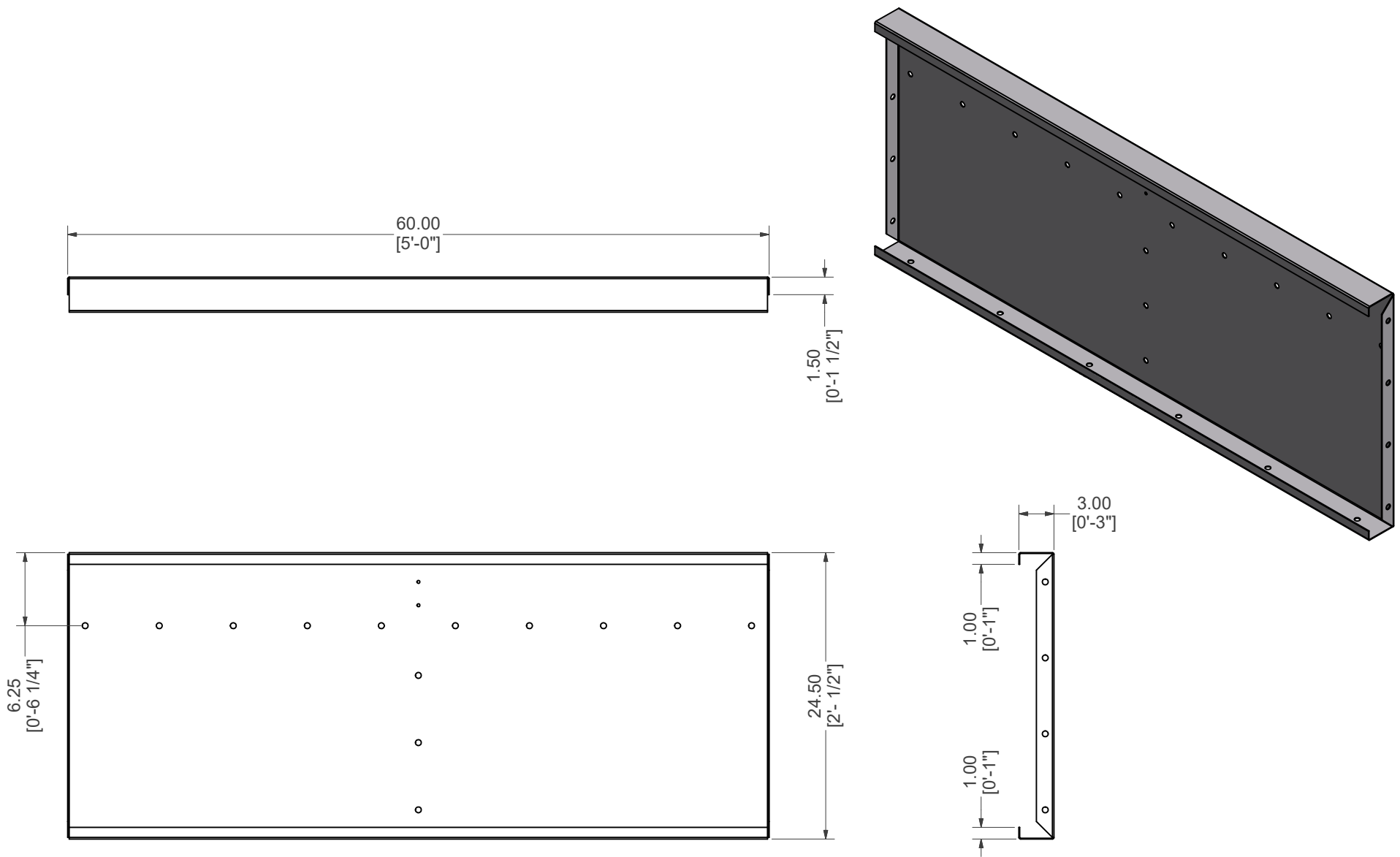
MATERIAL:
14 GA. GALVANIZED

DRAWN BY:
MT


DATE : 8/17/2020

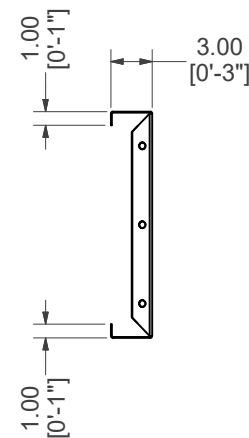
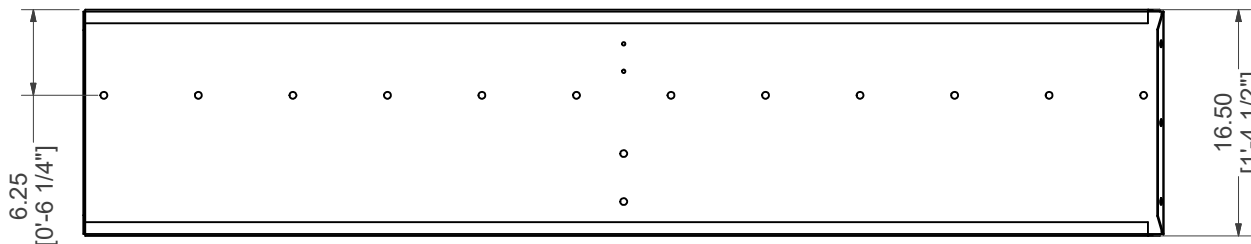
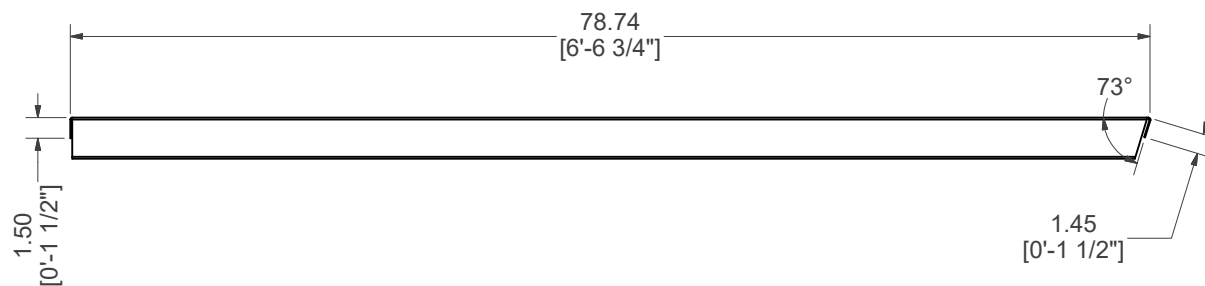
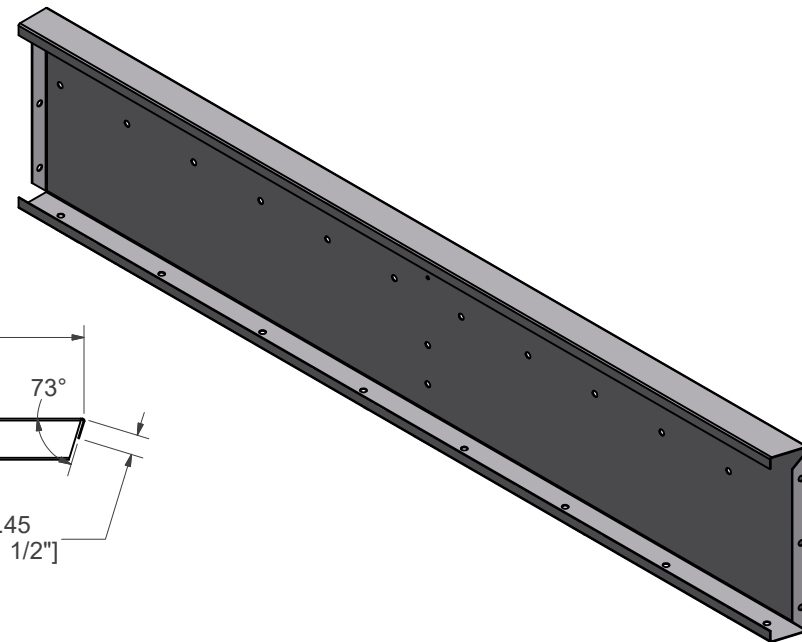
SHEET : 8 OF 30

NOTES:



STRAIGHT, MIDDLE RISER

PART #: ESC-11156-MR	WEIGHT: 40.19 lbmass	MACHINE TIME: N/A	FILE/DIRECTORY: C:\Vault\FTW\Design\CUSTOM STEPS\ESC-11000-11999\ESC-11156.idw		
	TOLERANCES EXCEPT AS NOTED 0/0 0.0 0.00 0.000 0" ±1/8 ±0.25 ±0.0625 ±0.03125 ±1/2"	MATERIAL: 14 GA. GALVANIZED	DATE : 8/17/2020		NOTES:
		DRAWN BY: MT	SHEET : 9 OF 30		



STRAIGHT, BOTTOM MIDDLE RISER, LEFT

PART #: ESC-11156-BMRL

WEIGHT:
39.05 lbmass

MACHINE TIME:
N/A

FILE/DIRECTORY:

C:\Vault\FTW\Design\CUSTOM STEPS\ESC-11000-11999\ESC-11156.idw

latham
The Pool Company

TOLERANCES EXCEPT
AS NOTED
0/0 0.0 0.00 0.000 0'
±1/8 ±0.25 ±0.0625 ±0.03125 ±1/2"

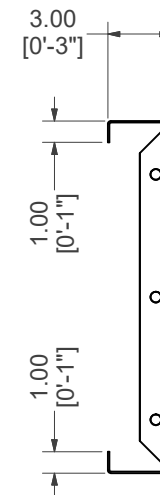
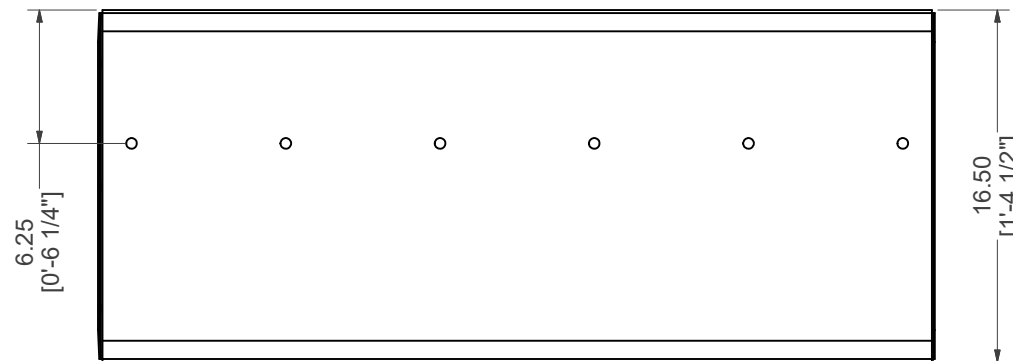
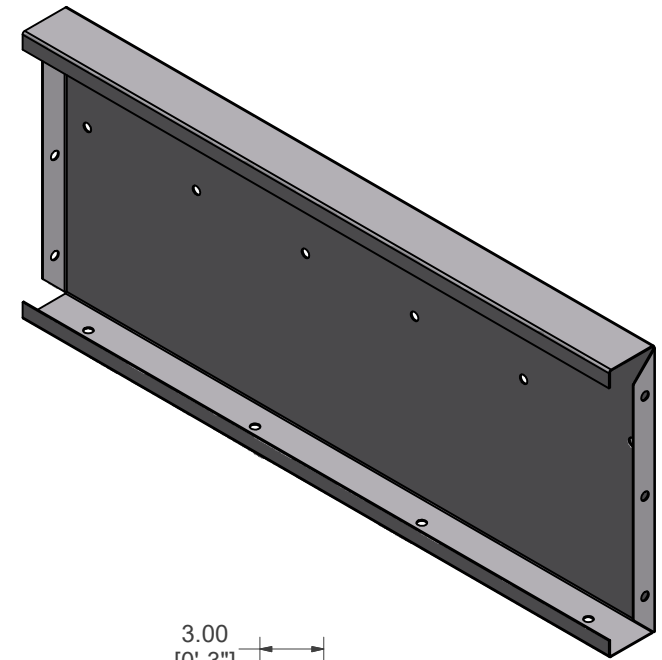
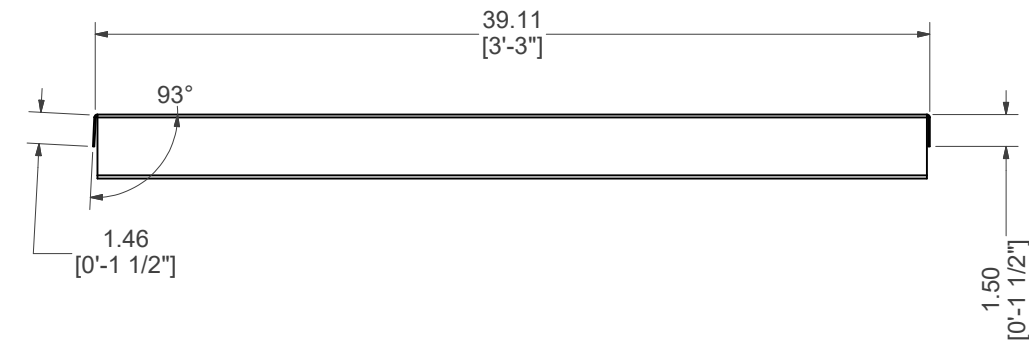
MATERIAL:
14 GA. GALVANIZED

DRAWN BY:
MT

DATE : 8/17/2020

SHEET : 10 OF 30

NOTES:



STRAIGHT, BOTTOM MIDDLE RISER, RIGHT

PART #: ESC-11156-BMRR

WEIGHT:
19.86 lbmass

MACHINE TIME:
N/A

FILE/DIRECTORY:

C:\Vault\FTW\Design\CUSTOM STEPS\ESC-11000-11999\ESC-11156.idw

latham
The Pool Company

TOLERANCES EXCEPT
AS NOTED
0/0 0.0 0.00 0.000 0"
±1/8 ±0.25 ±0.0625 ±0.03125 ±1/2"

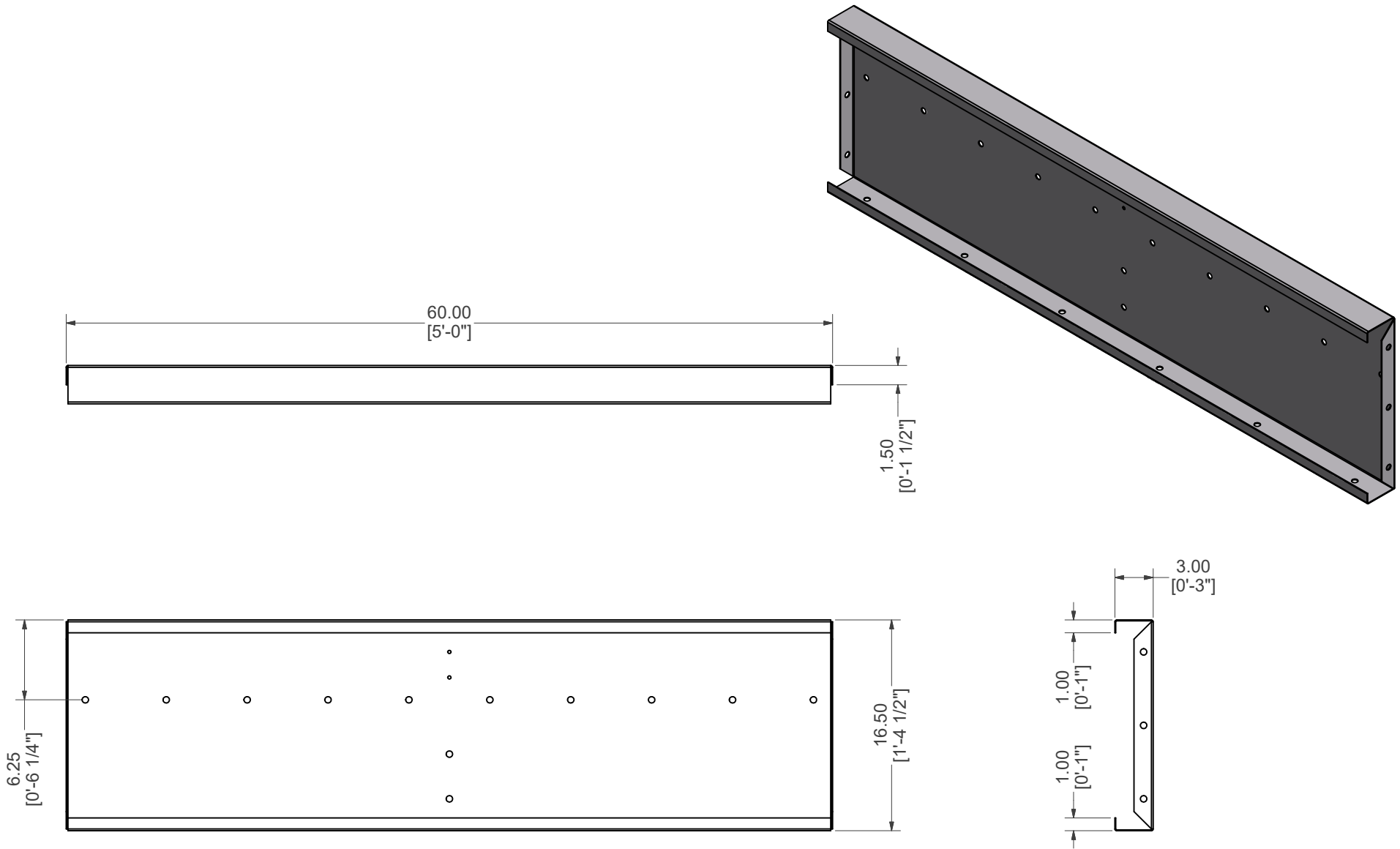
MATERIAL:
14 GA. GALVANIZED

DRAWN BY:
MT


DATE :
8/17/2020

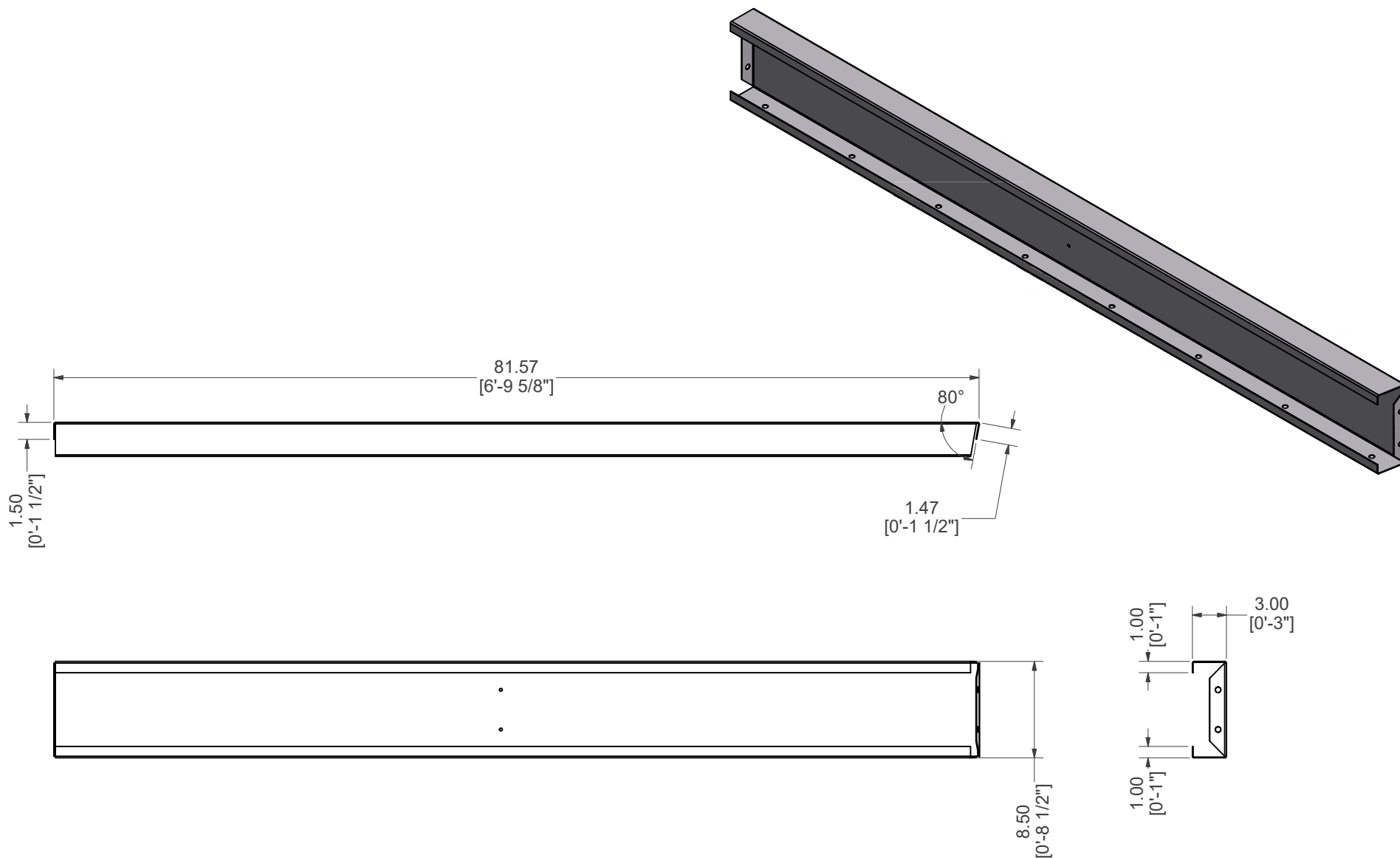
SHEET :
11 OF 30

NOTES:




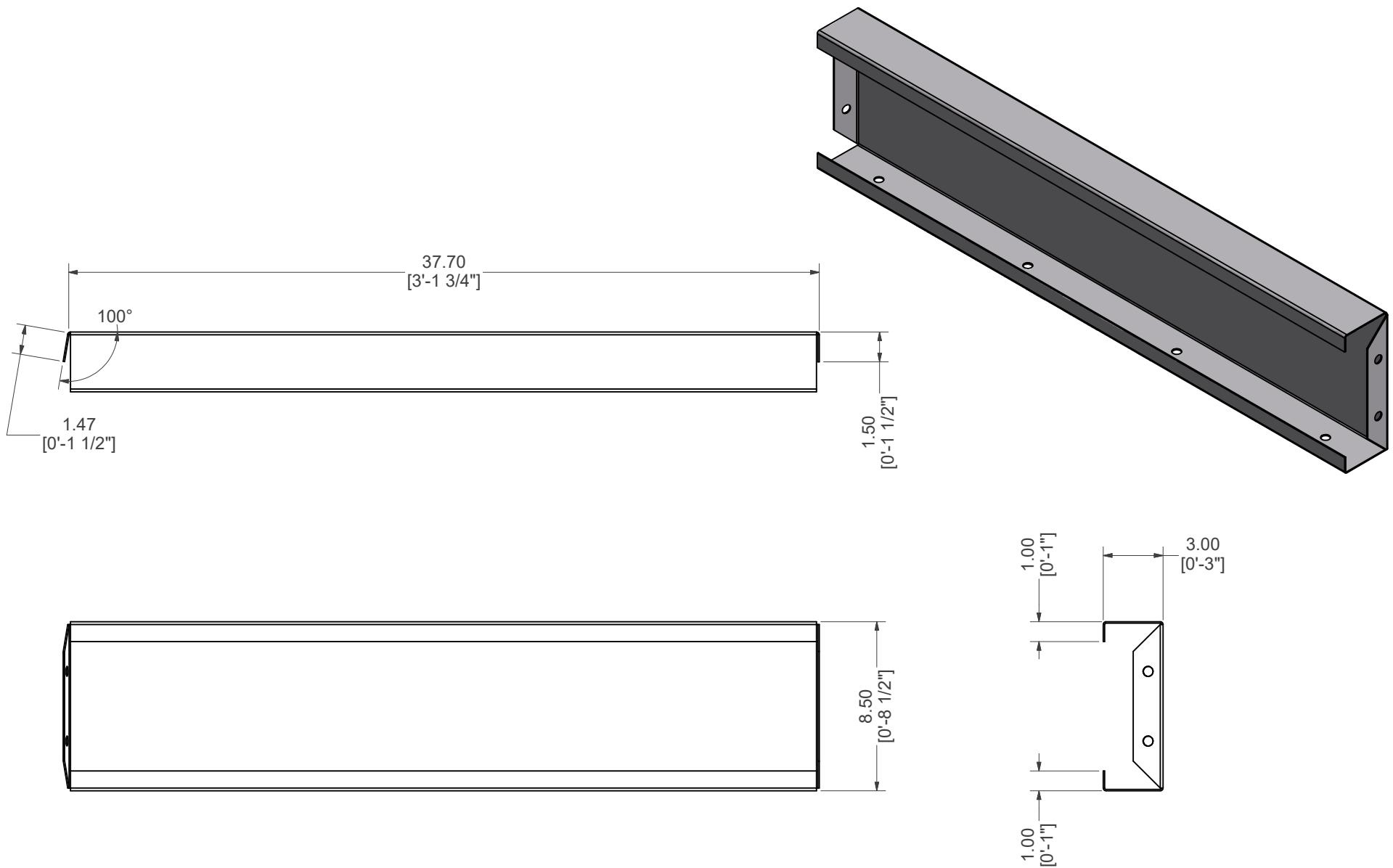
STRAIGHT, BOTTOM MIDDLE RISER

PART #: ESC-11156-BMR	WEIGHT: 30.00 lbmass	MACHINE TIME: N/A	FILE/DIRECTORY: C:\Vault\FTW\Design\CUSTOM STEPS\ESC-11000-11999\ESC-11156.idw	
	TOLERANCES EXCEPT AS NOTED 0/0 0.0 0.00 0.000 0' ±1/8 ±0.25 ±0.0625 ±0.03125 ±1/2"	MATERIAL: 14 GA. GALVANIZED	DATE : 8/17/2020	NOTES:
		DRAWN BY: MT	SHEET : 12 OF 30	




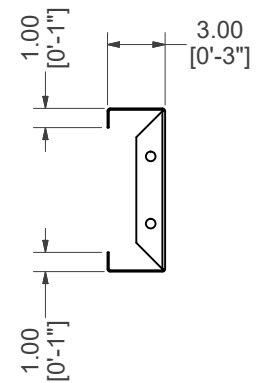
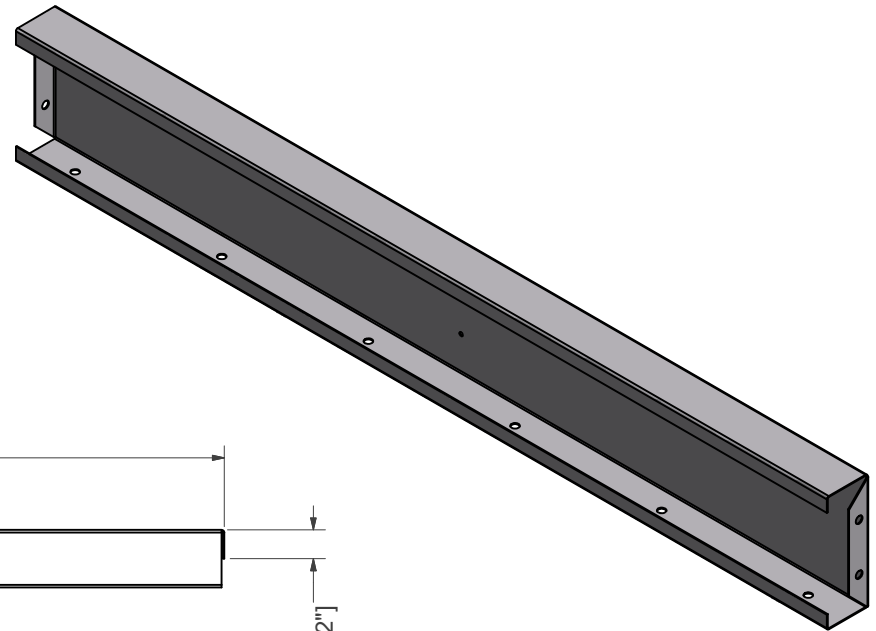
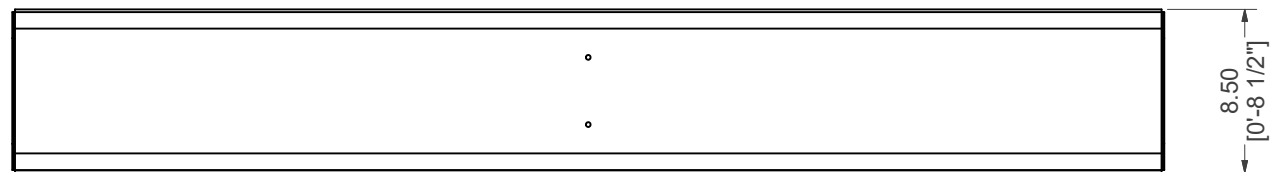
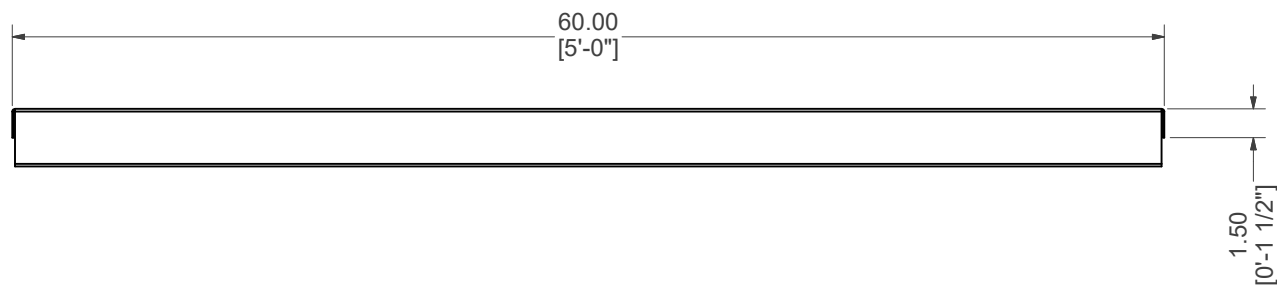
STRAIGHT, BOTTOM RISER, LEFT

PART #: ESC-11156-BRL	WEIGHT: 26.82 lbmass	MACHINE TIME: N/A	FILE/DIRECTORY: C:\Vault\FTW\Design\CUSTOM STEPS\ESC-11000-11999\ESC-11156.idw	
	TOLERANCES EXCEPT AS NOTED 0/0 0.0 0.00 0.000 0' ±1/8 ±0.25 ±0.0625 ±0.03125 ±1/2"	MATERIAL: 14 GA. GALVANIZED	DATE : 8/17/2020	NOTES:
		DRAWN BY: MT	SHEET : 13 OF 30	




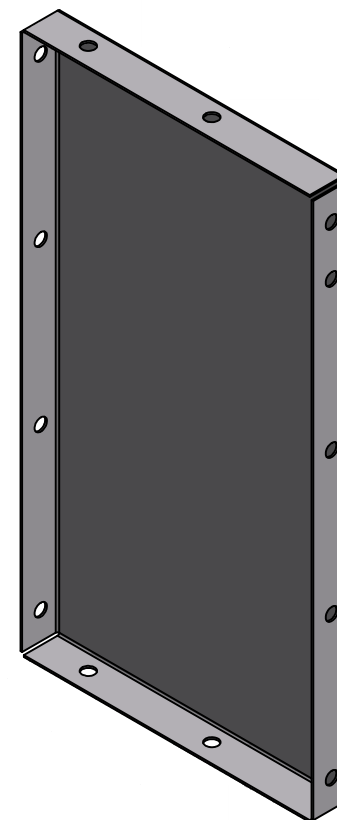
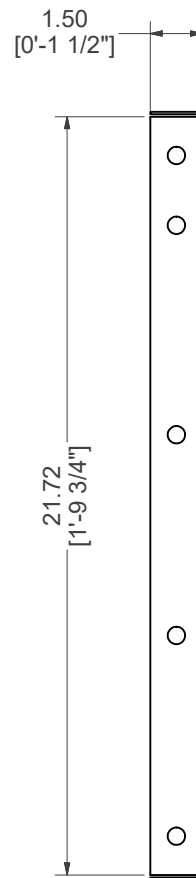
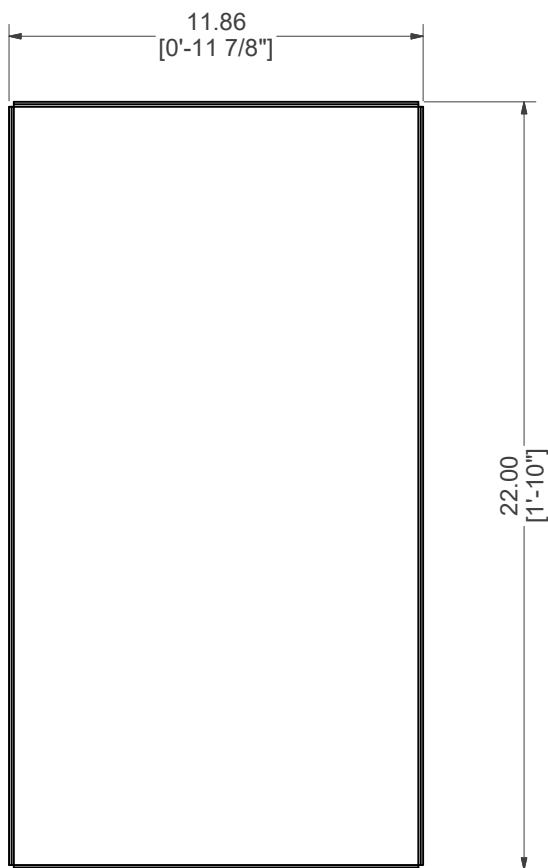
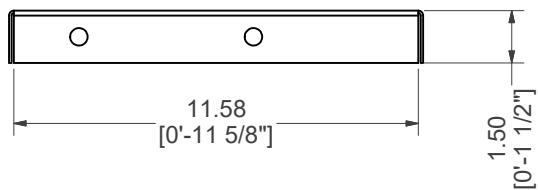
STRAIGHT, BOTTOM RISER, RIGHT

PART #: ESC-11156-BRR	WEIGHT: 12.61 lbmass	MACHINE TIME: N/A	FILE/DIRECTORY: C:\Vault\FTW\Design\CUSTOM STEPS\ESC-11000-11999\ESC-11156.idw	
	TOLERANCES EXCEPT AS NOTED 0/0 0.0 0.00 0.000 0' ±1/8 ±0.25 ±0.0625 ±0.03125 ±1/2"	MATERIAL: 14 GA. GALVANIZED	DATE : 8/17/2020	NOTES:
		DRAWN BY: MT	SHEET : 14 OF 30	



STRAIGHT, BOTTOM RISER

PART #: ESC-11156-BR	WEIGHT: 19.85 lbmass	MACHINE TIME: N/A	FILE/DIRECTORY: C:\Vault\FTW\Design\CUSTOM STEPS\ESC-11000-11999\ESC-11156.idw	
	TOLERANCES EXCEPT AS NOTED 0/0 0.0 0.00 0.000 0' ±1/8 ±0.25 ±0.0625 ±0.03125 ±1/2"	MATERIAL: 14 GA. GALVANIZED	DATE : 8/17/2020	NOTES:
		DRAWN BY: MT	SHEET : 15 OF 30	



BRACE, MIDDLE RISER SUPPORT

PART #: ESC-11156-MRS

WEIGHT:
7.12 lbmass

MACHINE TIME:
N/A

FILE/DIRECTORY:

C:\Vault\FTW\Design\CUSTOM STEPS\ESC-11000-11999\ESC-11156.idw

latham
The Pool Company

TOLERANCES EXCEPT
AS NOTED

0/0 0.0 0.00 0.000 0'
±1/8 ±0.25 ±0.0625 ±0.03125 ±1/2"

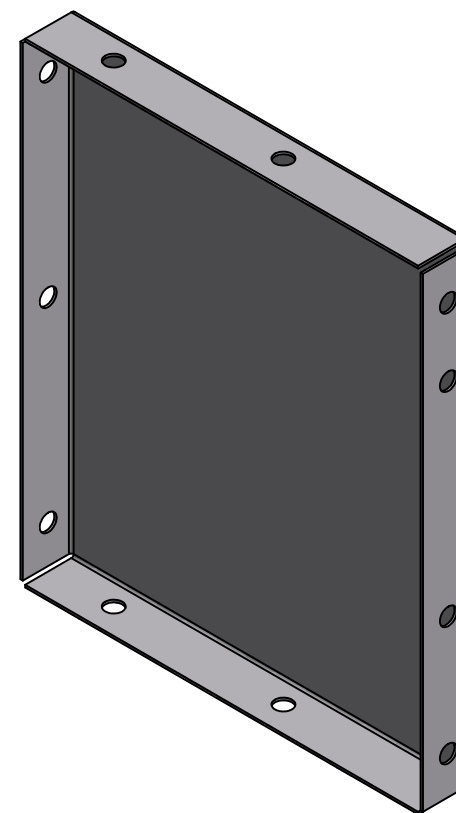
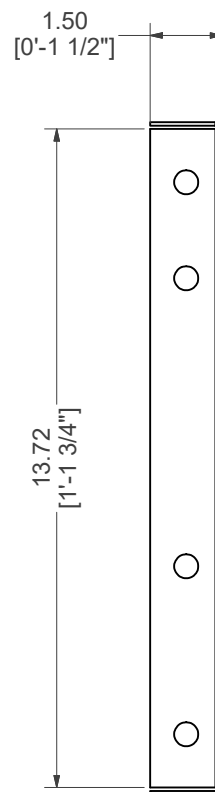
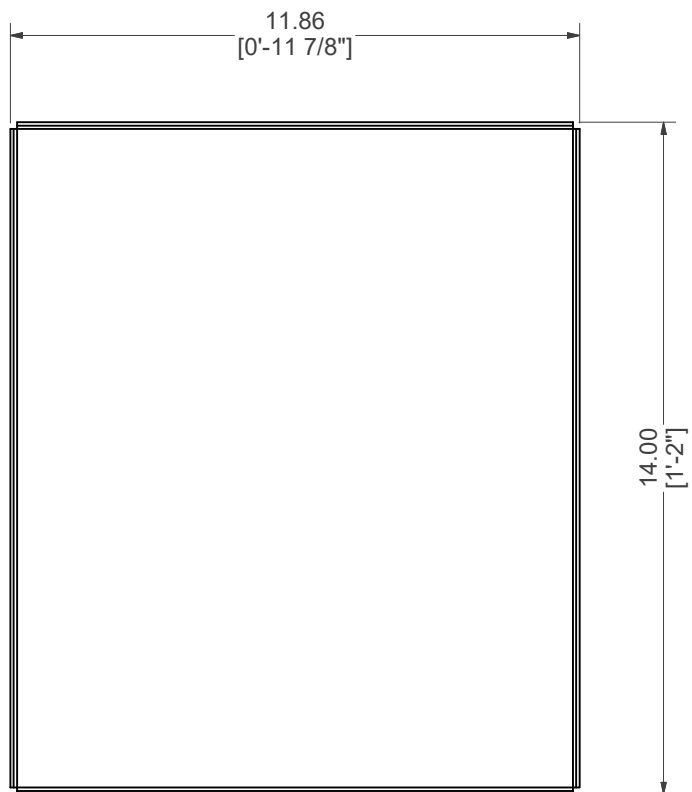
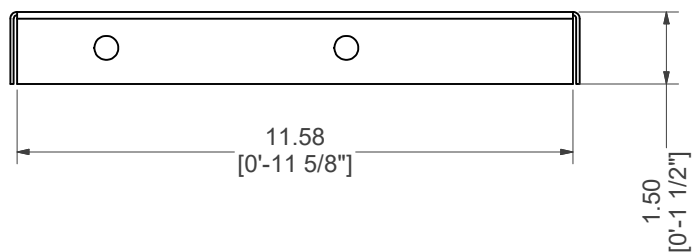
MATERIAL:
14 GA. GALVANIZED

DRAWN BY:
MT


DATE : 8/17/2020

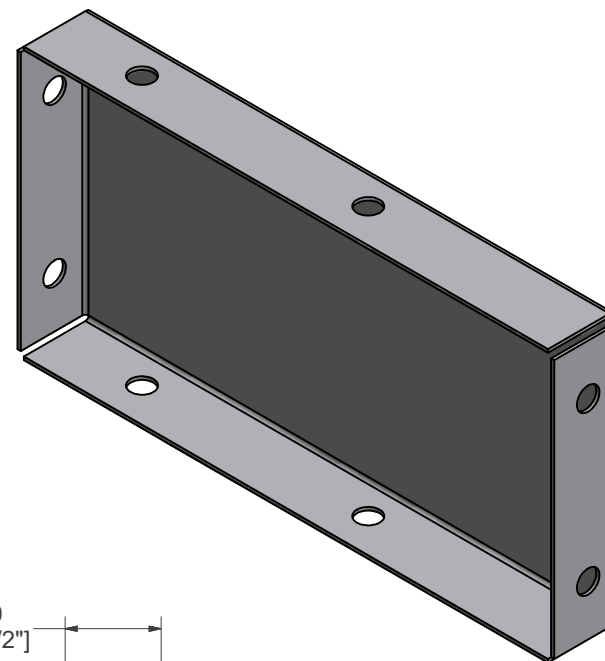
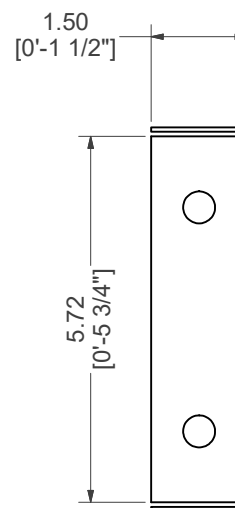
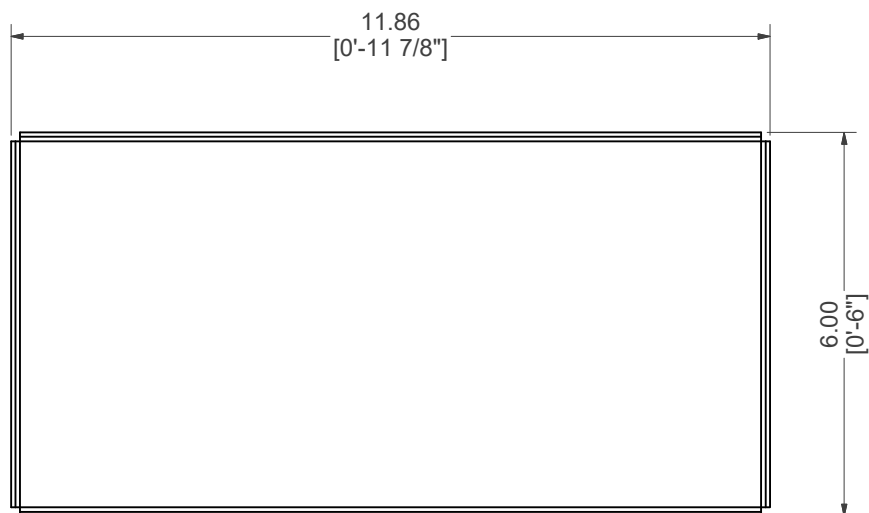
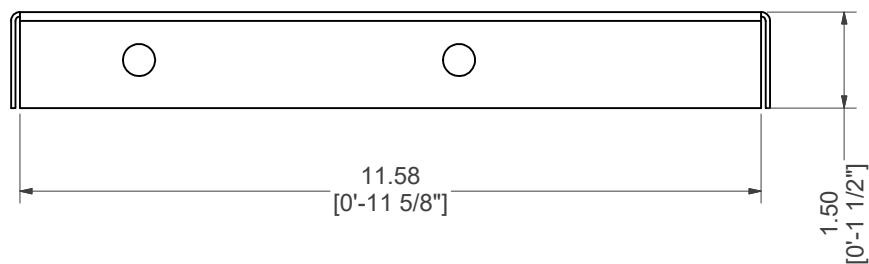
SHEET : 16 OF 30

NOTES:



BRACE, BOTTOM MIDDLE RISER SUPPORT

PART #: ESC-11156-BMRS	WEIGHT: 4.75 lbmass	MACHINE TIME: N/A	FILE/DIRECTORY: C:\Vault\FTW\Design\CUSTOM STEPS\ESC-11000-11999\ESC-11156.idw	
	TOLERANCES EXCEPT AS NOTED 0/0 0.0 0.00 0.000 0' ±1/8 ±0.25 ±0.0625 ±0.03125 ±1/2"	MATERIAL: 14 GA. GALVANIZED	DATE : 8/17/2020	NOTES:
		DRAWN BY: MT	SHEET : 17 OF 30	



BRACE, BOTTOM RISER SUPPORT

PART #: ESC-11156-BRS

WEIGHT:
2.39 lbmass

MACHINE TIME:
N/A

FILE/DIRECTORY:

C:\Vault\FTW\Design\CUSTOM STEPS\ESC-11000-11999\ESC-11156.idw

latham
The Pool Company

TOLERANCES EXCEPT
AS NOTED

0/0	0.0	0.00	0.000	0"
±1/8	±0.25	±0.0625	±0.03125	±1/2"

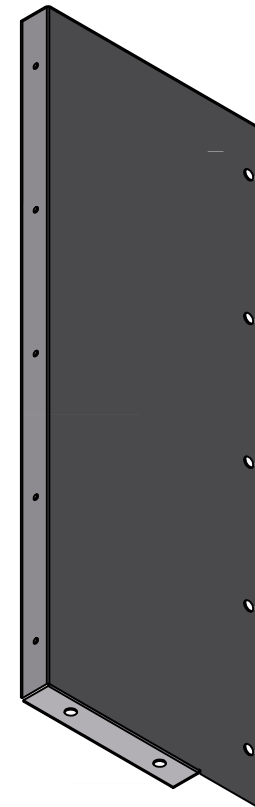
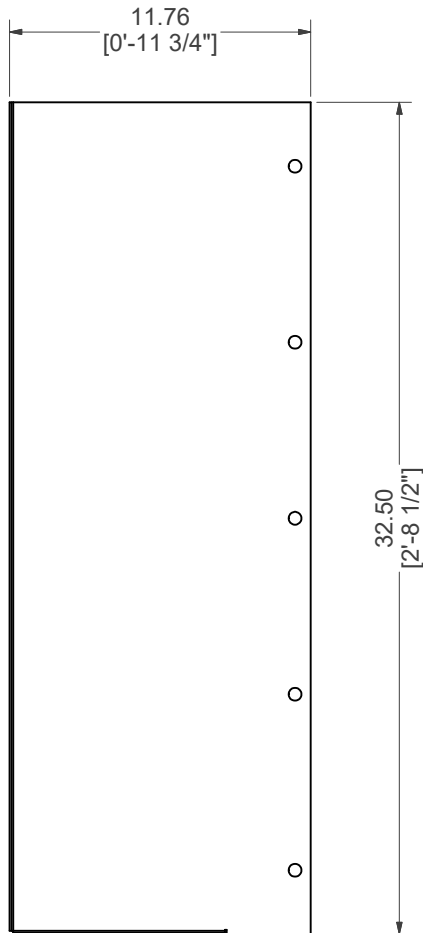
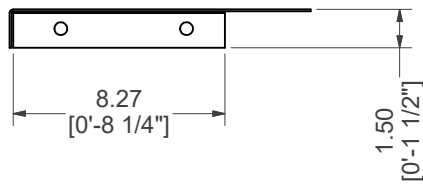
MATERIAL:
14 GA. GALVANIZED

DRAWN BY:
MT


DATE : 8/17/2020

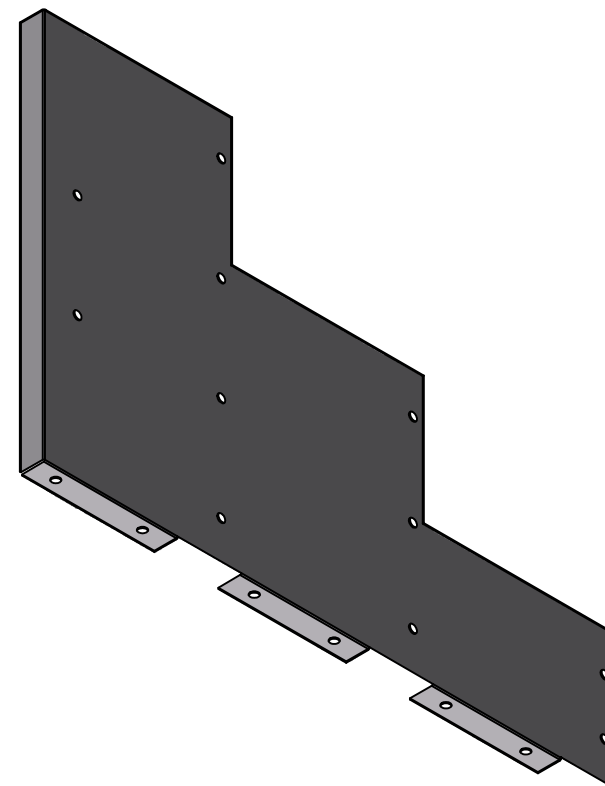
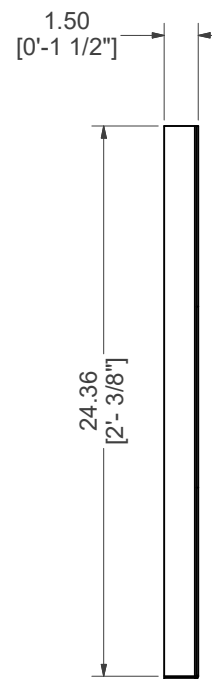
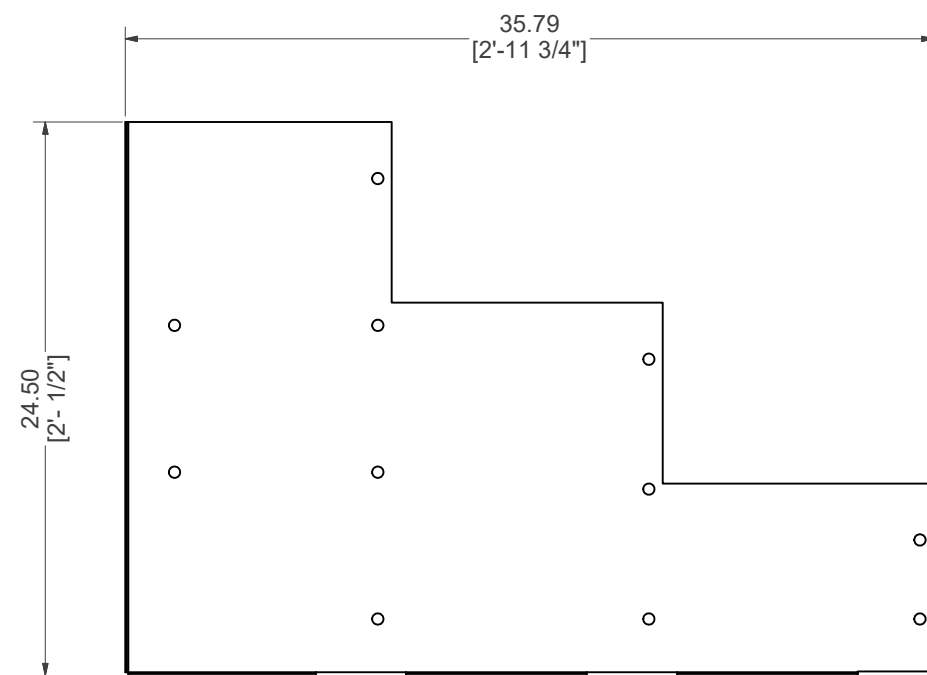
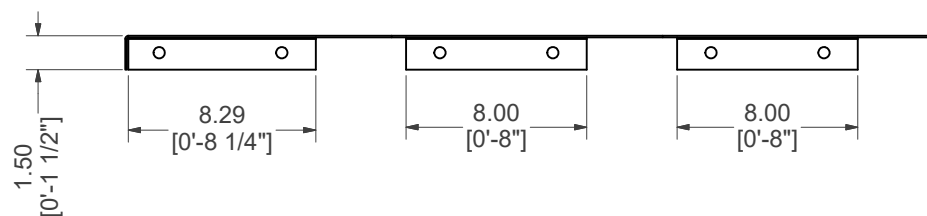
SHEET : 18 OF 30

NOTES:




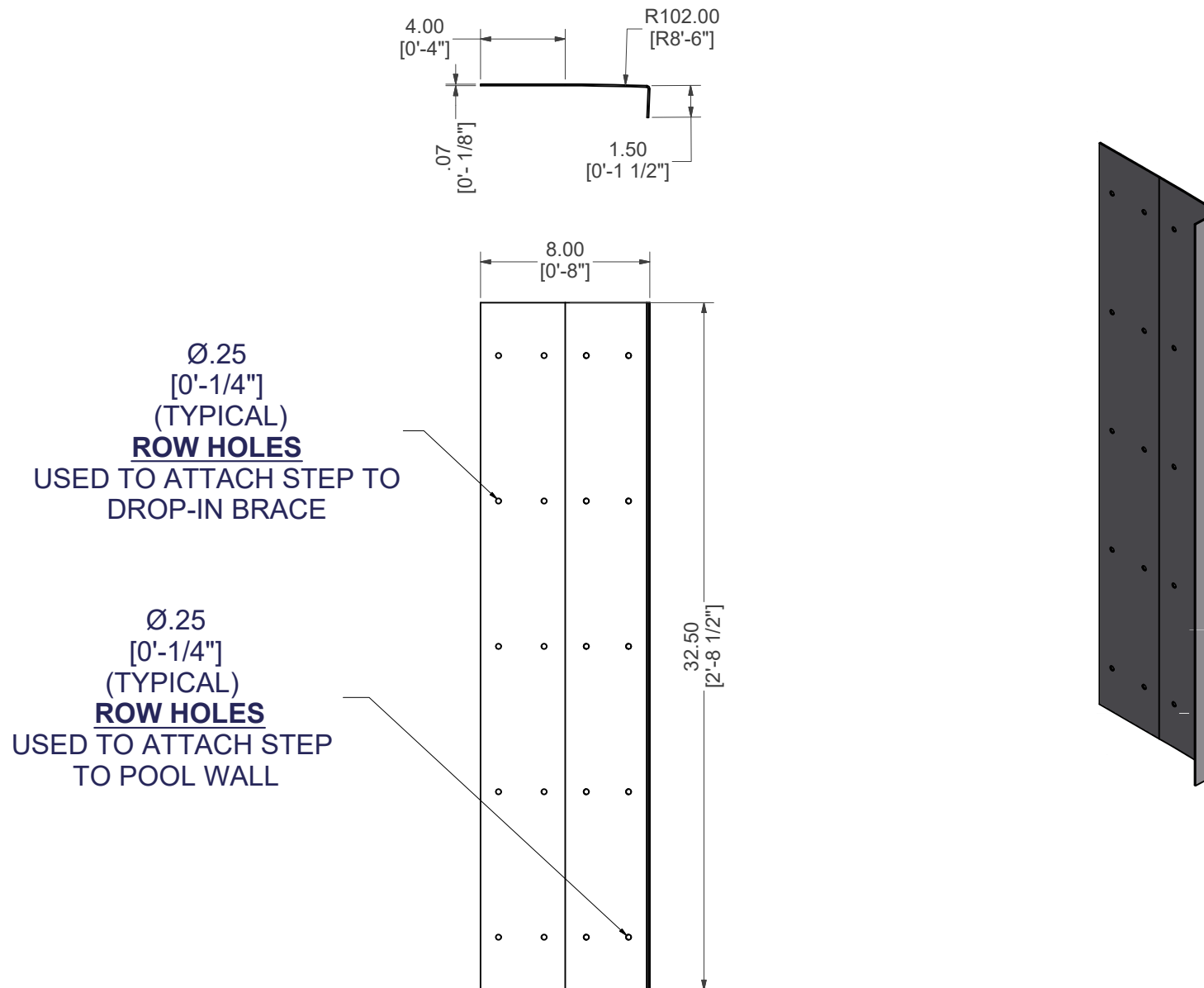
BRACE, TOP RISER SUPPORT

PART #: ESC-11156-TRS	WEIGHT: 8.88 lbmass	MACHINE TIME: N/A	FILE/DIRECTORY: C:\Vault\FTW\Design\CUSTOM STEPS\ESC-11000-11999\ESC-11156.idw	
	TOLERANCES EXCEPT AS NOTED 0/0 0.0 0.00 0.000 0' ±1/8 ±0.25 ±0.0625 ±0.03125 ±1/2"	MATERIAL: 14 GA. GALVANIZED	DATE : 8/17/2020	NOTES:
		DRAWN BY: MT	SHEET : 19 OF 30	




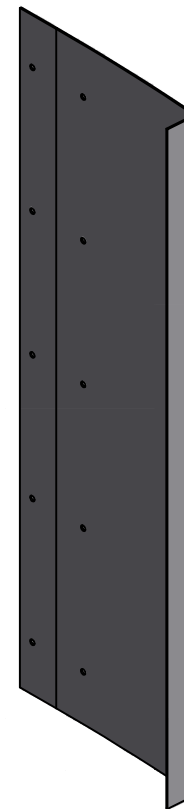
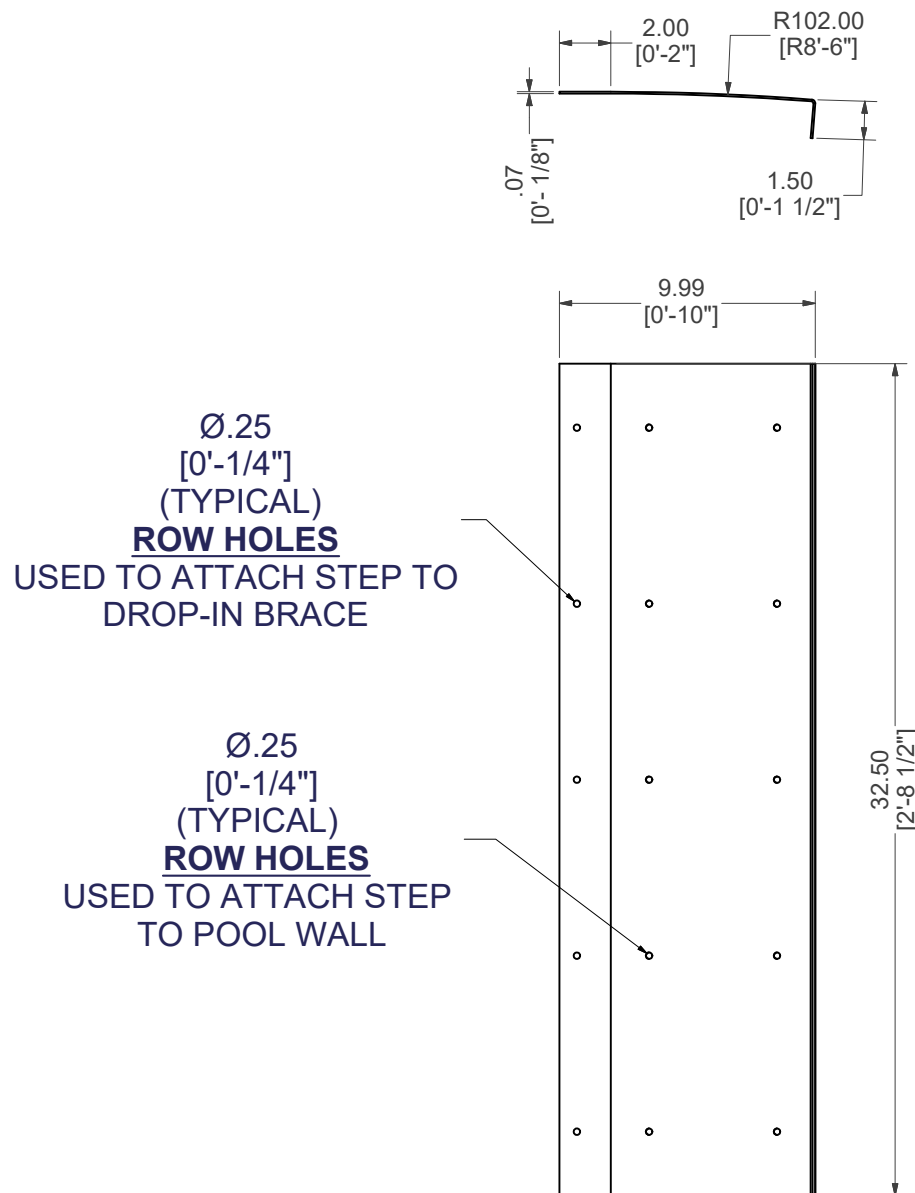
BRACE, 3 - RISER SUPPORT

PART #: ESC-11156-B	WEIGHT: 13.23 lbmass	MACHINE TIME: N/A	FILE/DIRECTORY: C:\Vault\FTW\Design\CUSTOM STEPS\ESC-11000-11999\ESC-11156.idw	
	TOLERANCES EXCEPT AS NOTED 0/0 0.0 0.00 0.000 0' ±1/8 ±0.25 ±0.0625 ±0.03125 ±1/2"	MATERIAL: 14 GA. GALVANIZED	DATE : 8/17/2020	NOTES:
		DRAWN BY: MT	SHEET : 20 OF 30	




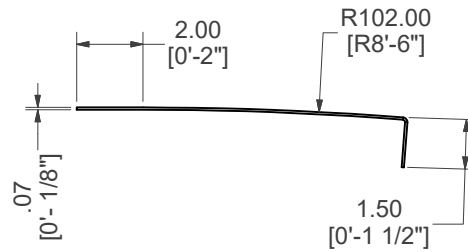
BRACE, SIDE SUPPORT PLATE, TOP, LEFT

PART #: ESC-11156-SSTL	WEIGHT: 6.17 lbmass	MACHINE TIME: N/A	FILE/DIRECTORY: C:\Vault\FTW\Design\CUSTOM STEPS\ESC-11000-11999\ESC-11156.idw	
	TOLERANCES EXCEPT AS NOTED 0/0 0.0 0.00 0.000 0' ±1/8 ±0.25 ±0.0625 ±0.03125 ±1/2"	MATERIAL: 14 GA. GALVANIZED	DATE : 8/17/2020	NOTES:
		DRAWN BY: MT	SHEET : 21 OF 30	



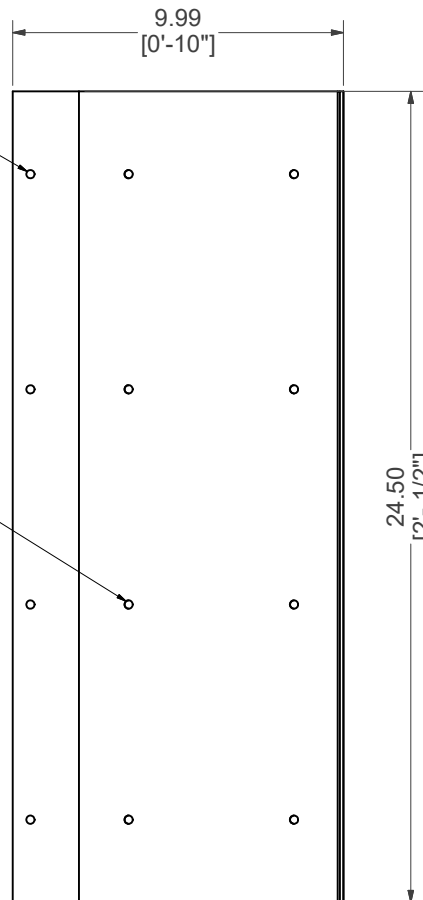
BRACE, SIDE SUPPORT PLATE, TOP, RIGHT

PART #: ESC-11156-SSTR	WEIGHT: 7.50 lbmass	MACHINE TIME: N/A	FILE/DIRECTORY: C:\Vault\FTW\Design\CUSTOM STEPS\ESC-11000-11999\ESC-11156.idw	
	TOLERANCES EXCEPT AS NOTED 0/0 0.0 0.00 0.000 0' ±1/8 ±0.25 ±0.0625 ±0.03125 ±1/2'	MATERIAL: 14 GA. GALVANIZED	DATE : 8/17/2020	NOTES:
		DRAWN BY: MT	SHEET : 22 OF 30	




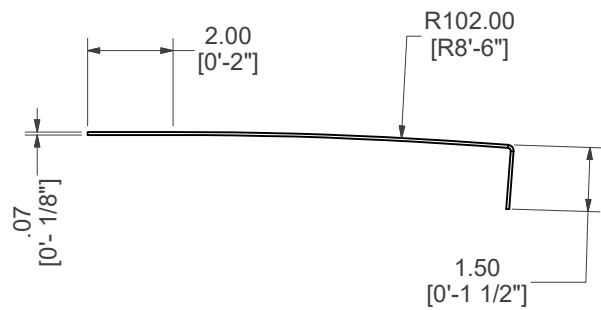
Ø.25
[0'-1/4"]
(TYPICAL)
ROW HOLES
USED TO ATTACH STEP TO
DROP-IN BRACE

Ø.25
[0'-1/4"]
(TYPICAL)
ROW HOLES
USED TO ATTACH STEP
TO POOL WALL



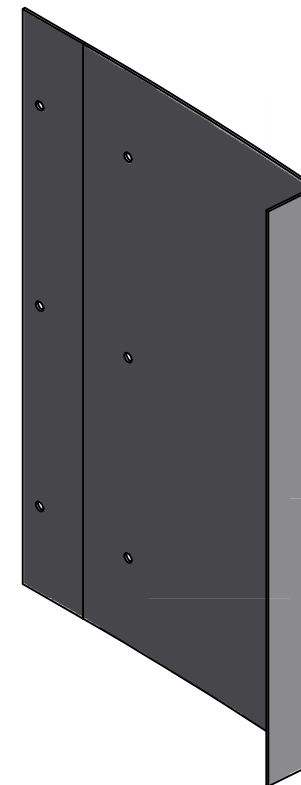
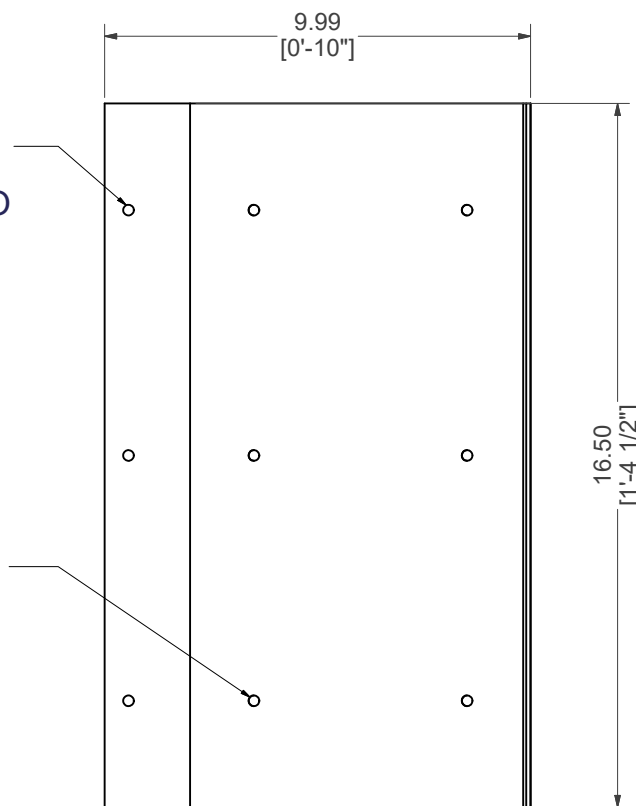
BRACE, SIDE SUPPORT PLATE, MIDDLE

PART #: ESC-11156-SSPM	WEIGHT: 5.65 lbmass	MACHINE TIME: N/A	FILE/DIRECTORY: C:\Vault\FTW\Design\CUSTOM STEPS\ESC-11000-11999\ESC-11156.idw	
	TOLERANCES EXCEPT AS NOTED 0/0 0.0 0.00 0.000 0" ±1/8 ±0.25 ±0.0625 ±0.03125 ±1/2"	MATERIAL: 14 GA. GALVANIZED	DATE : 8/17/2020	NOTES:
		DRAWN BY: MT	SHEET : 23 OF 30	




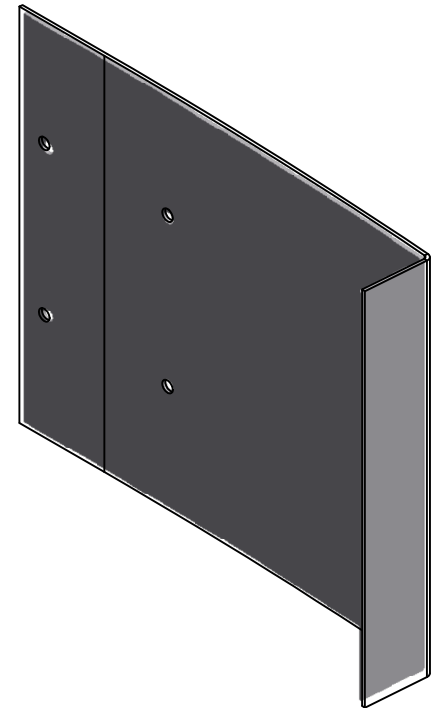
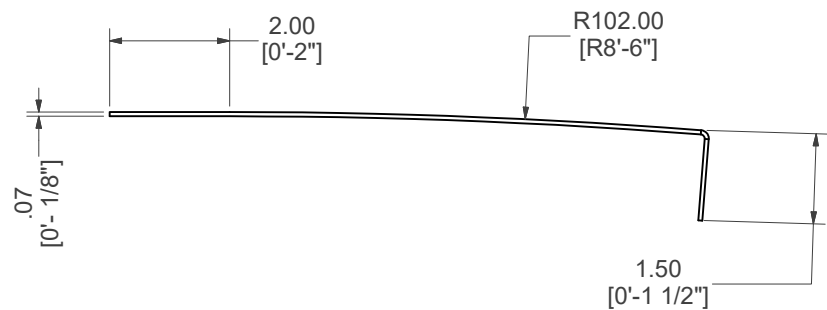
Ø.25
[0'-1/4"]
(TYPICAL)
ROW HOLES
USED TO ATTACH STEP TO
DROP-IN BRACE

Ø.25
[0'-1/4"]
(TYPICAL)
ROW HOLES
USED TO ATTACH STEP
TO POOL WALL



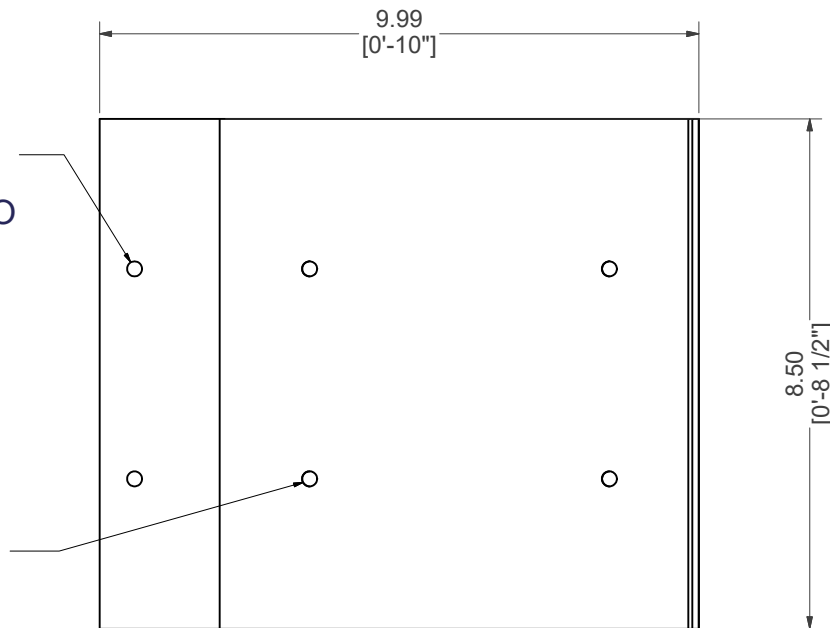
BRACE, SIDE SUPPORT PLATE, BOTTOM, MIDDLE

PART #: ESC-11156-SSBM	WEIGHT: 3.81 lbmass	MACHINE TIME: N/A	FILE/DIRECTORY: C:\Vault\FTW\Design\CUSTOM STEPS\ESC-11000-11999\ESC-11156.idw	
	TOLERANCES EXCEPT AS NOTED 0/0 0.0 0.00 0.000 0' ±1/8 ±0.25 ±0.0625 ±0.03125 ±1/2"	MATERIAL: 14 GA. GALVANIZED	DATE : 8/17/2020	NOTES:
		DRAWN BY: MT	SHEET : 24 OF 30	



Ø.25
[0'-1/4"]
(TYPICAL)
ROW HOLES
USED TO ATTACH STEP TO
DROP-IN BRACE

Ø.25
[0'-1/4"]
(TYPICAL)
ROW HOLES
USED TO ATTACH STEP
TO POOL WALL



BRACE, SIDE SUPPORT PLATE, BOTTOM

PART #: ESC-11156-SSPB

WEIGHT:
1.96 lbmass

MACHINE TIME:
N/A

FILE/DIRECTORY:

C:\Vault\FTW\Design\CUSTOM STEPS\ESC-11000-11999\ESC-11156.idw

latham
The Pool Company

TOLERANCES EXCEPT
AS NOTED
0/0 0.0 0.00 0.000 0'
±1/8 ±0.25 ±0.0625 ±0.03125 ±1/2"

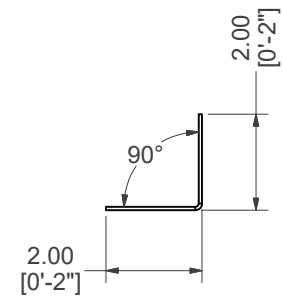
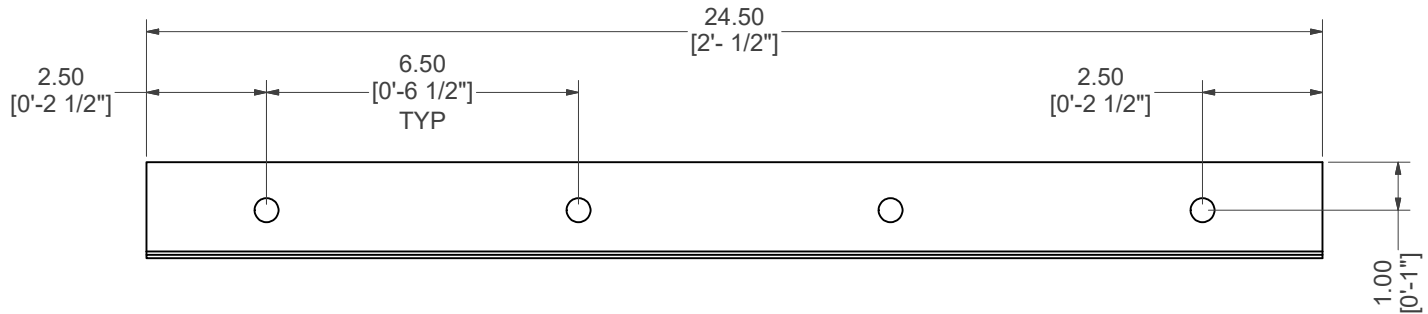
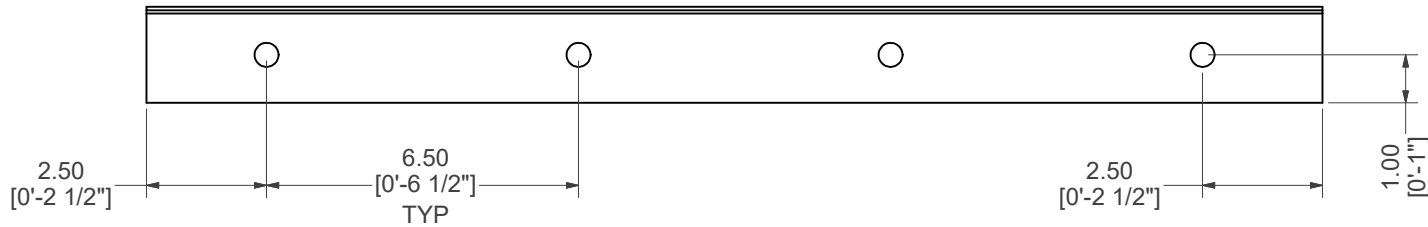
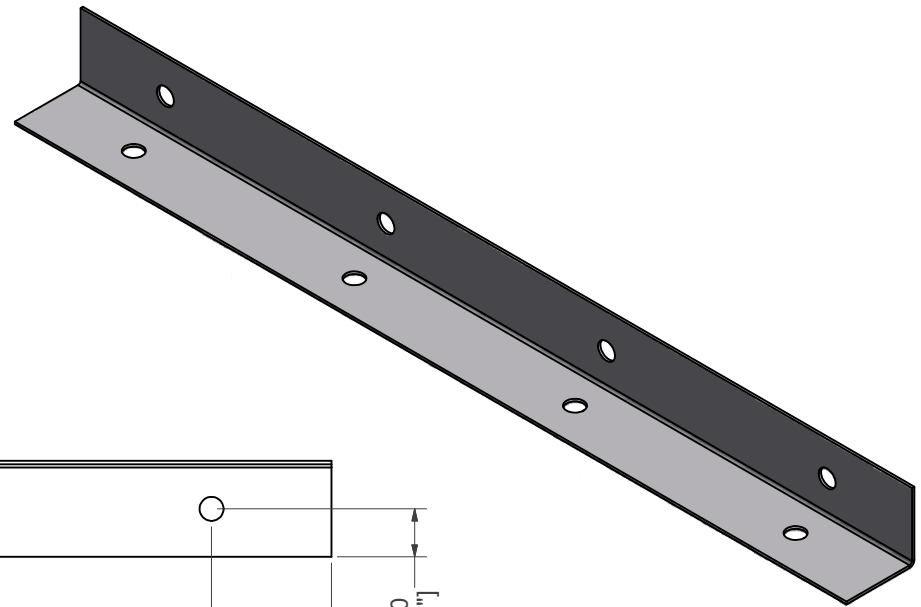
MATERIAL:
14 GA. GALVANIZED

DRAWN BY:
MT


DATE :
8/17/2020

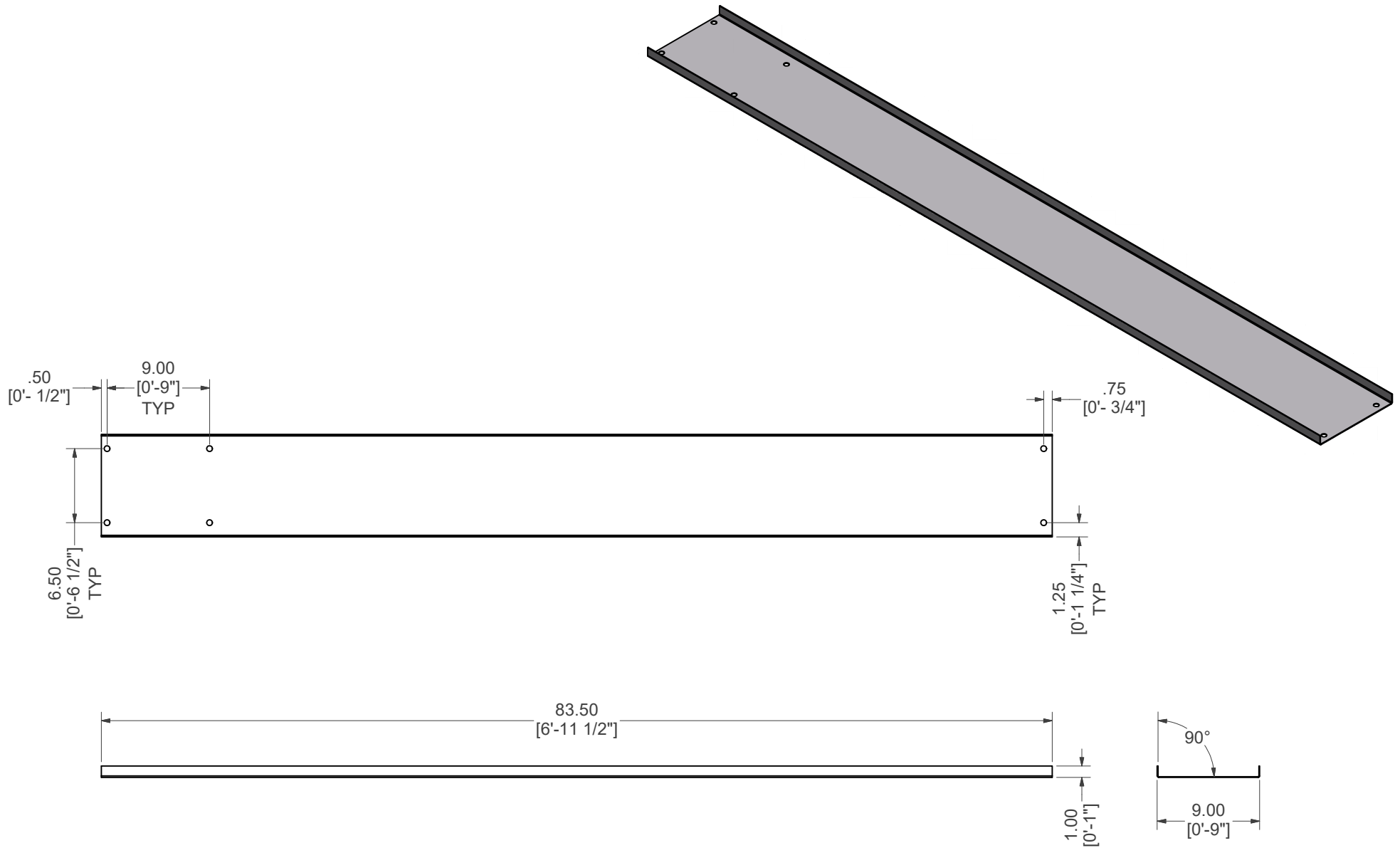
SHEET :
25 OF 30

NOTES:




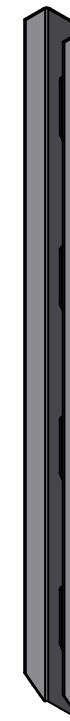
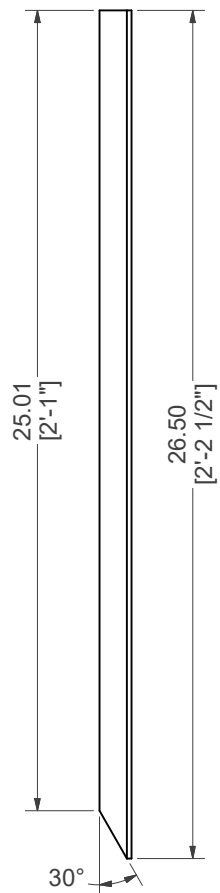
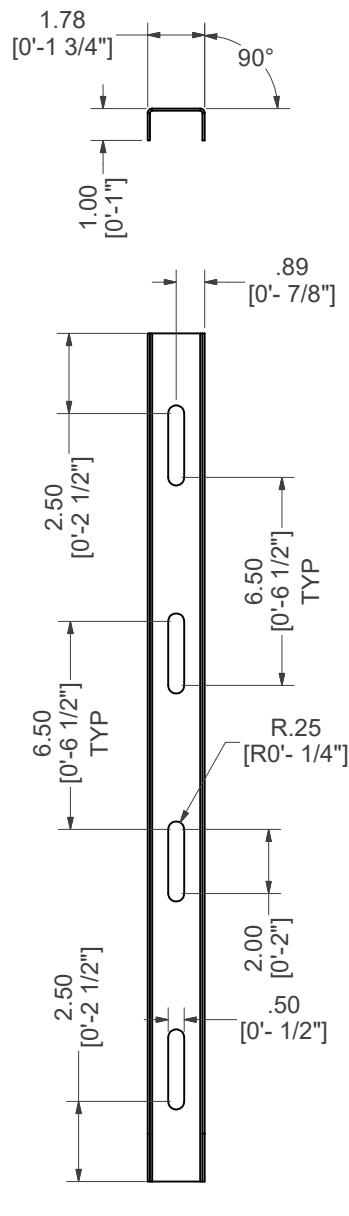
BRACE, 90° L BRACKET

PART #: ESC-7341-BB	WEIGHT: 1.90 lbmass	MACHINE TIME: N/A	FILE/DIRECTORY: C:\Vault\FTW\Design\CUSTOM STEPS\ESC-11000-11999\ESC-11156.idw	
	TOLERANCES EXCEPT AS NOTED 0/0 0.0 0.00 0.000 0' ±1/8 ±0.25 ±0.0625 ±0.03125 ±1/2"	MATERIAL: 14 GA. GALVANIZED	DATE : 8/17/2020	NOTES:
		DRAWN BY: MT	SHEET : 26 OF 30	




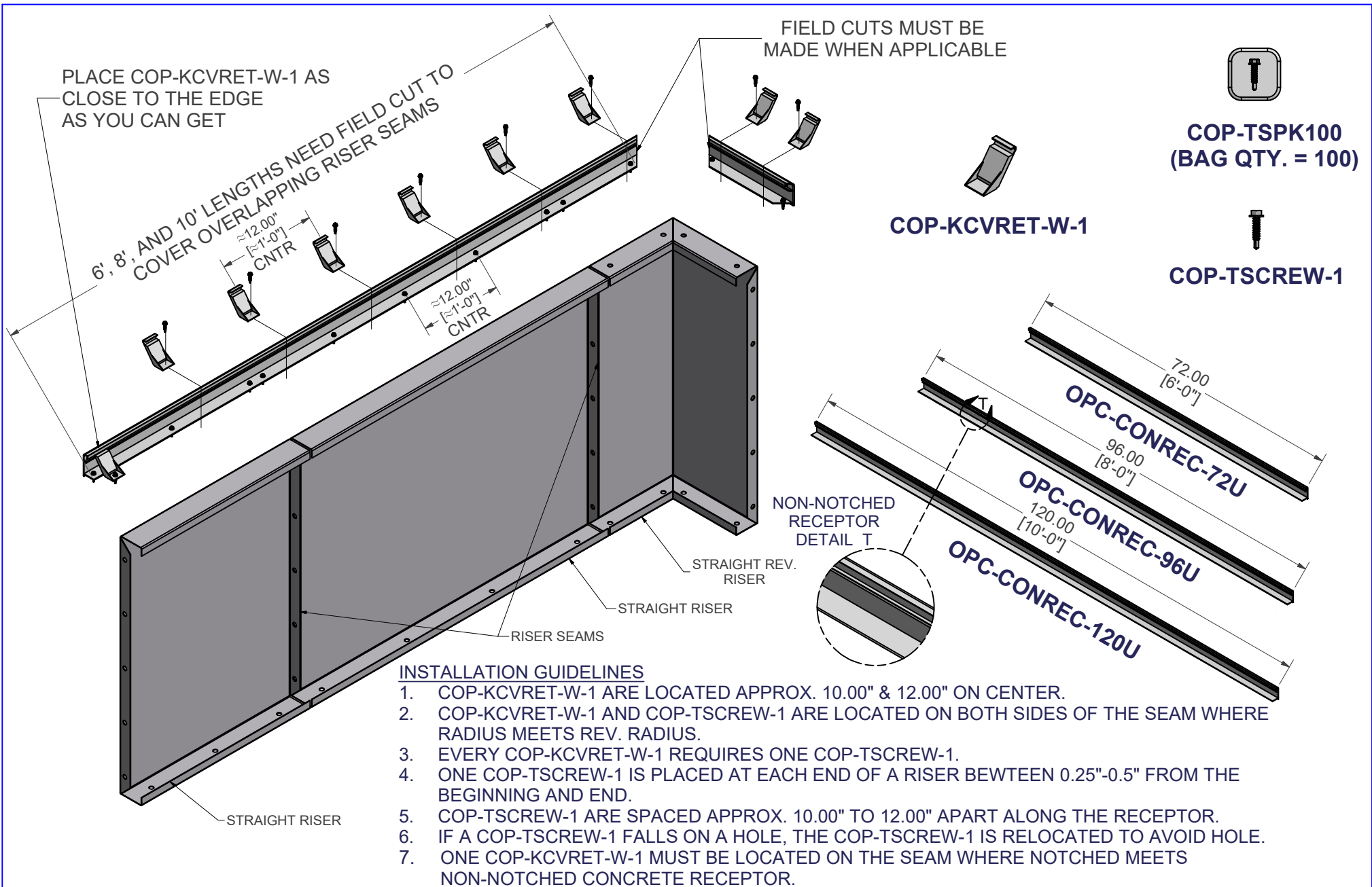
BRACE, CENTER SUPPORT

PART #: ESC-11156-CB	WEIGHT: 18.25 lbmass	MACHINE TIME: N/A	FILE/DIRECTORY: C:\Vault\FTW\Design\CUSTOM STEPS\ESC-11000-11999\ESC-11156.idw	
	TOLERANCES EXCEPT AS NOTED 0/0 0.0 0.00 0.000 0' ±1/8 ±0.25 ±0.0625 ±0.03125 ±1/2"	MATERIAL: 14 GA. GALVANIZED	DATE : 8/17/2020	NOTES:
		DRAWN BY: MT	SHEET : 27 OF 30	




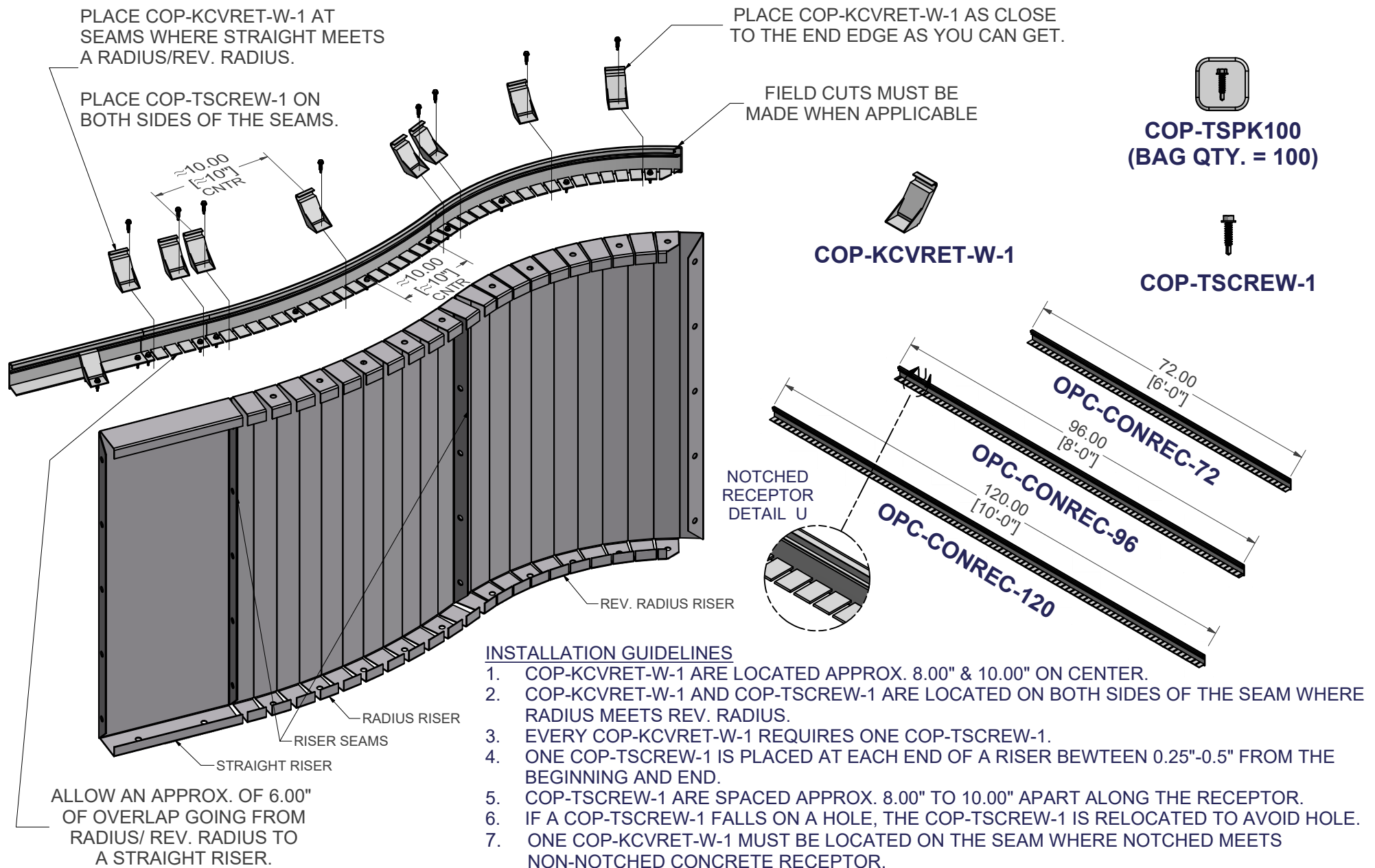
BRACE, DRIVE STAKE CHANNEL SET

PART #: ESC-11156-DS	WEIGHT: 1.79 lbmass	MACHINE TIME: N/A	FILE/DIRECTORY: C:\Vault\FTW\Design\CUSTOM STEPS\ESC-11000-11999\ESC-11156.idw	
	TOLERANCES EXCEPT AS NOTED 0/0 0.0 0.00 0.000 0' ±1/8 ±0.25 ±0.0625 ±0.03125 ±1/2"	MATERIAL: 14 GA. GALVANIZED	DATE : 8/17/2020	NOTES:
		DRAWN BY: MT	SHEET : 28 OF 30	



NON-NOTCHED CONCRETE RECEPTOR FIELD INSTALLATION

PART # STRAIGHT CONCRETE RECEPTOR 	WEIGHT: 77.51 lbmass TOLERANCES EXCEPT AS NOTED 0/0 0.0 0.00 0.000 0" ±1/8 ±0.25 ±0.0625 ±0.03125 ±1/2"	MACHINE TIME: N/A MATERIAL: DRAWN BY: MT	FILE/DIRECTORY: C:\Vault\FTW\Design\CUSTOM STEPS\ESC-11000-11999\ESC-11156.idw DATE : 8/17/2020 SHEET : 29 OF 30 NOTES:
--	---	--	---



NOTCHED CONCRETE RECEPTOR FIELD INSTALLATION

REV. RADIUS CONCRETE RECEPTOR

WEIGHT:
52.49 lbmass

MACHINE TIME:
N/A

FILE/DIRECTORY:

C:\Vault\FTW\Design\CUSTOM STEPS\ESC-11000-11999\ESC-11156.idw

latham
The Pool Company

TOLERANCES EXCEPT AS NOTED
0/0 0.0 0.00 0.000 0'
±1/8 ±0.25 ±0.0625 ±0.03125 ±1/2"

MATERIAL:

DRAWN BY:

MT

DATE :

8/17/2020

SHEET :

30 OF 30

NOTES: