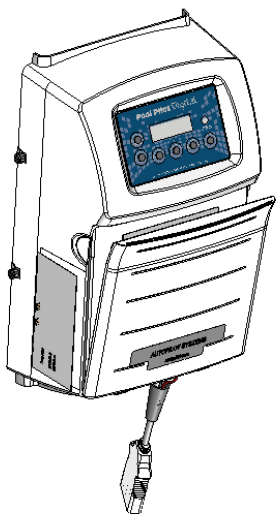
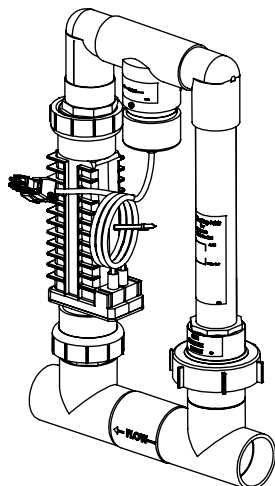


DIG-220

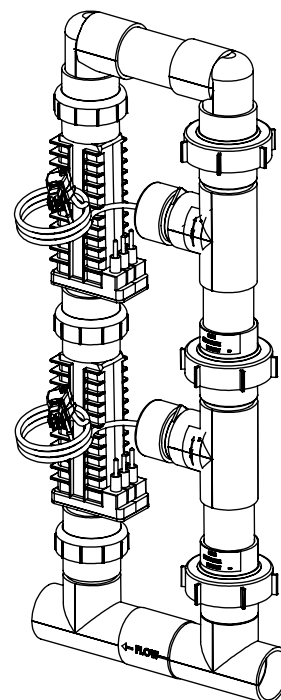
Digital



DIG-220



Single System Manifold



Dual System Manifold

Power Supply

PART #	DESCRIPTION
DIG-220	Digital Power Supply Eng,Esp,Fra,Ita Languages
DIG-220CE	Digital Power Supply CE Version Eng,Esp,Fra,Ita Languages
DIG-220CE-GERMAN	Digital Power Supply Ger,Eng,Esp,Fra,Ita Languages

Single System Manifold Types

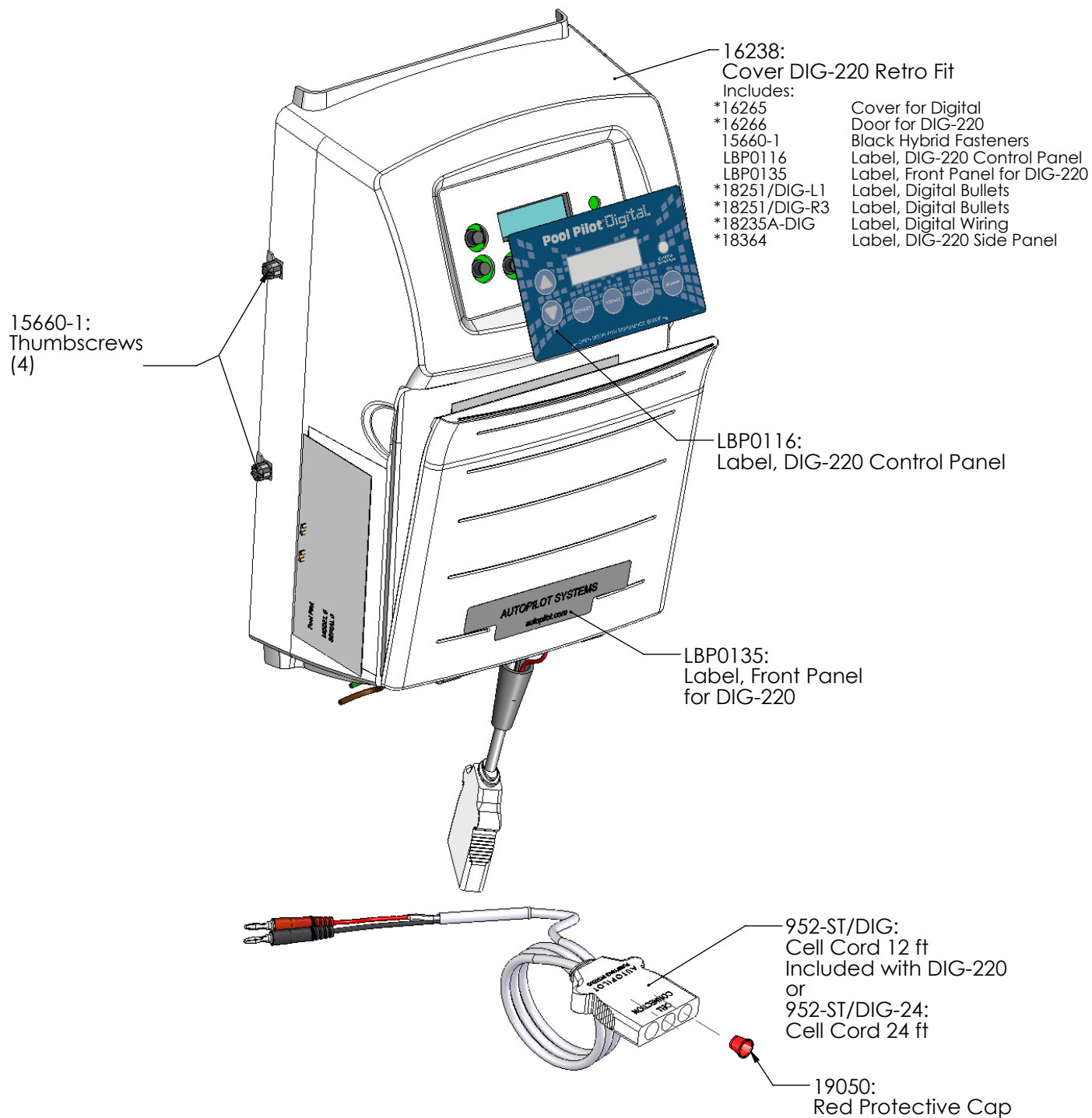
PART #	DESCRIPTION	PAGE #
94105	Manifold Assy with RC35/22 Cell	5
94107	Manifold Assy with RC42 Cell	5
94113	Manifold Assy with RC52 Cell	5
94115C	Manifold Assy with CC15-FF Cell	5
94105M	Manifold Assy with RC35/22 Cell and Metric Adapters	5
94107M	Manifold Assy with RC42 Cell and Metric Adapters	5
94113M	Manifold Assy with RC52 Cell and Metric Adapters	5
94115CM	Manifold Assy with CC15 Cell and Metric Adapters	5
APK0006	Spacer Cell for Maintenance	9

Dual System Manifold Types

PART #	DESCRIPTION	PAGE #
941-215C-A	Manifold Commercial	6
938-SC	Spacer Cell	9

Digital

DIG-220 Power Supply Parts

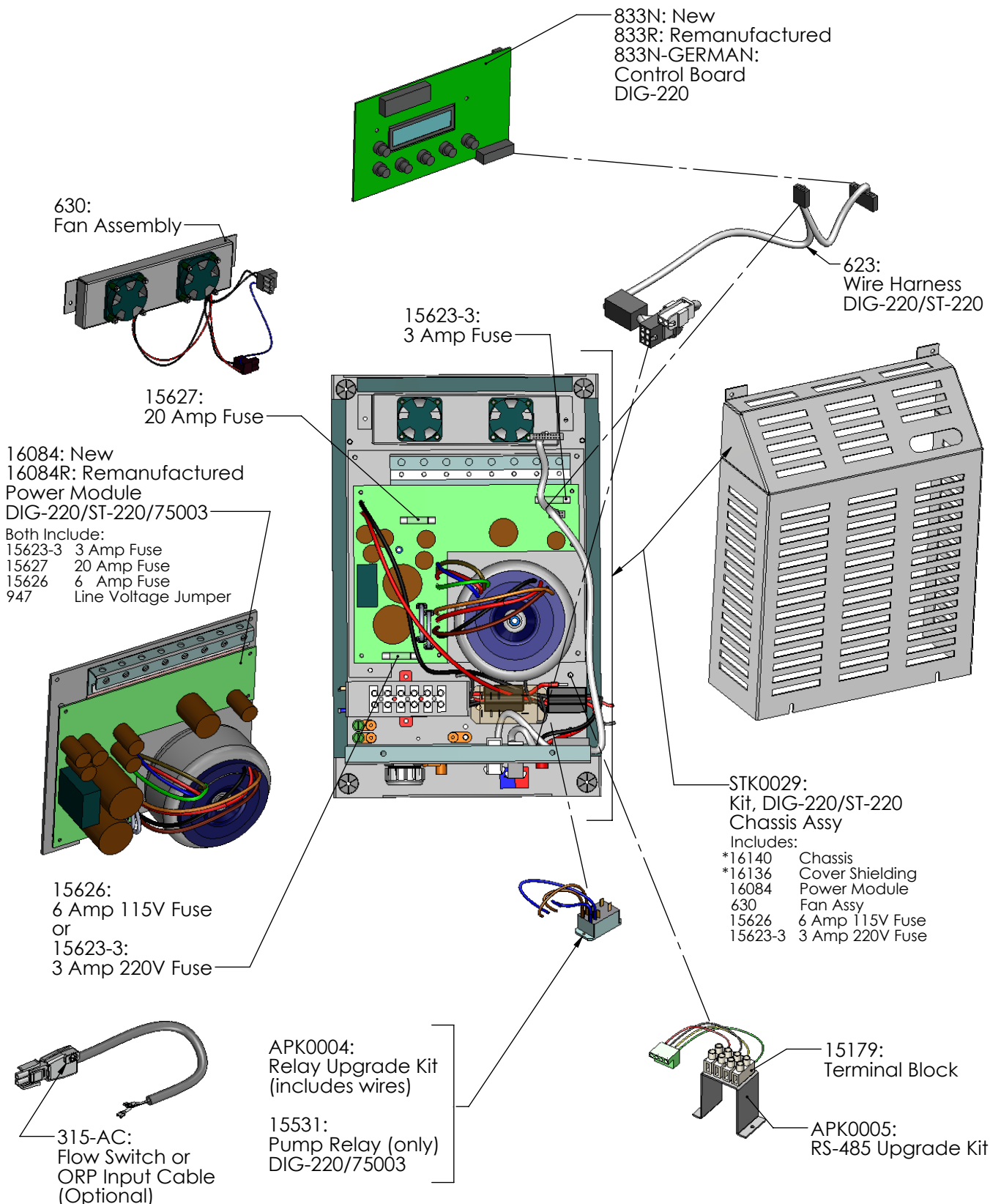


*Cannot be ordered separately

DIG-220

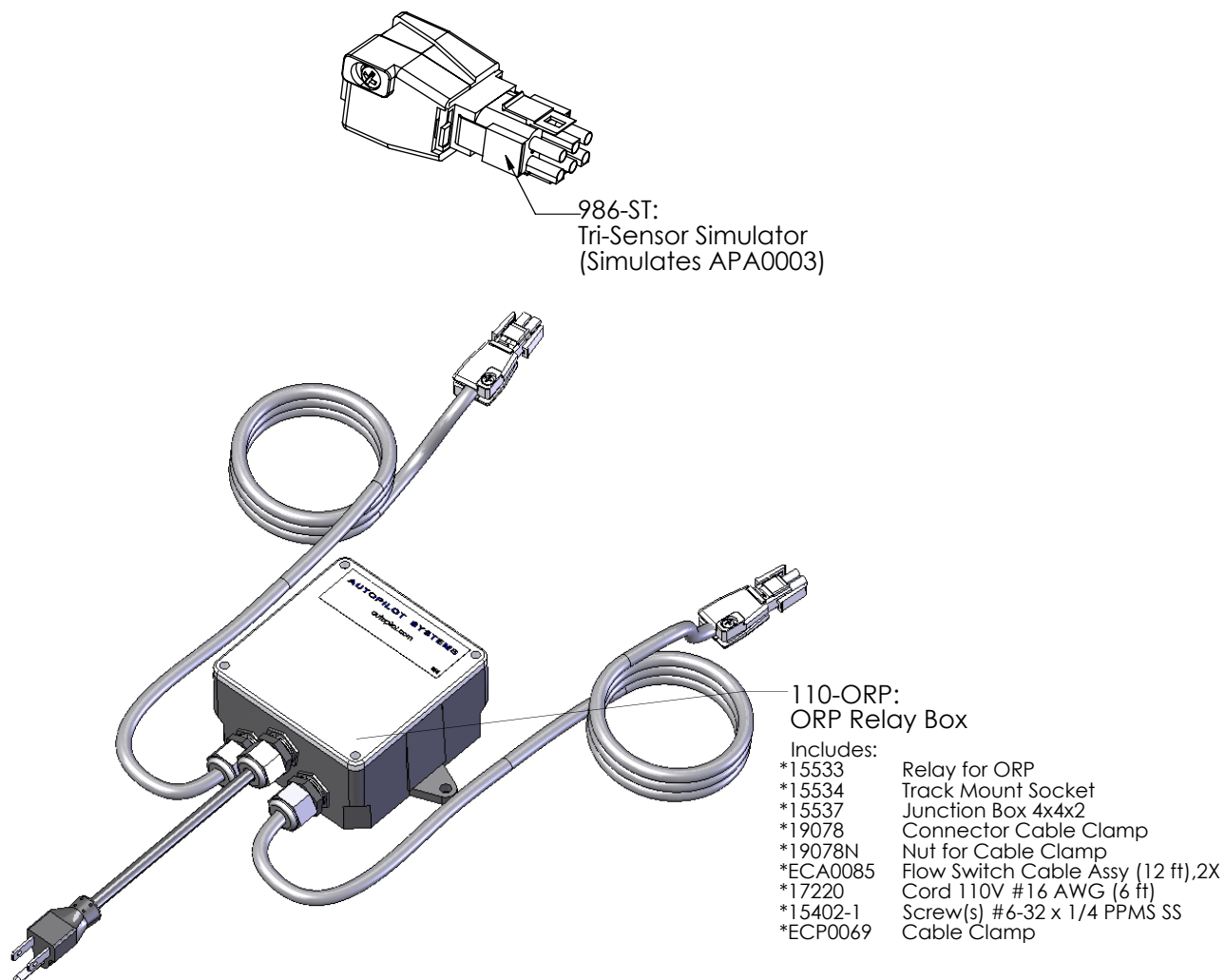
Power Supply Parts

Digital



*Cannot be ordered separately

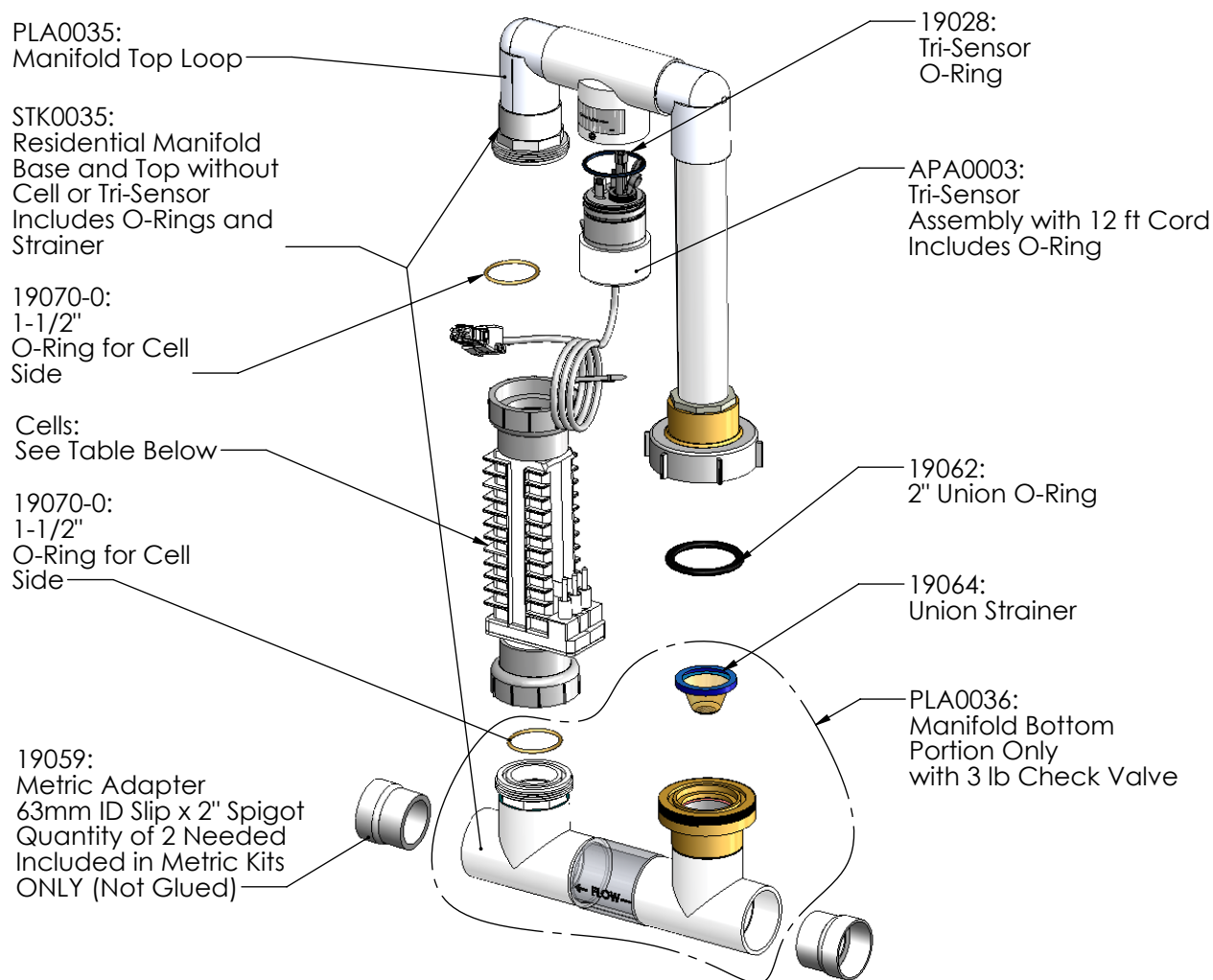
POWER SUPPLY ACCESSORIES



*Cannot be ordered separately

SINGLE SYSTEM MANIFOLDS

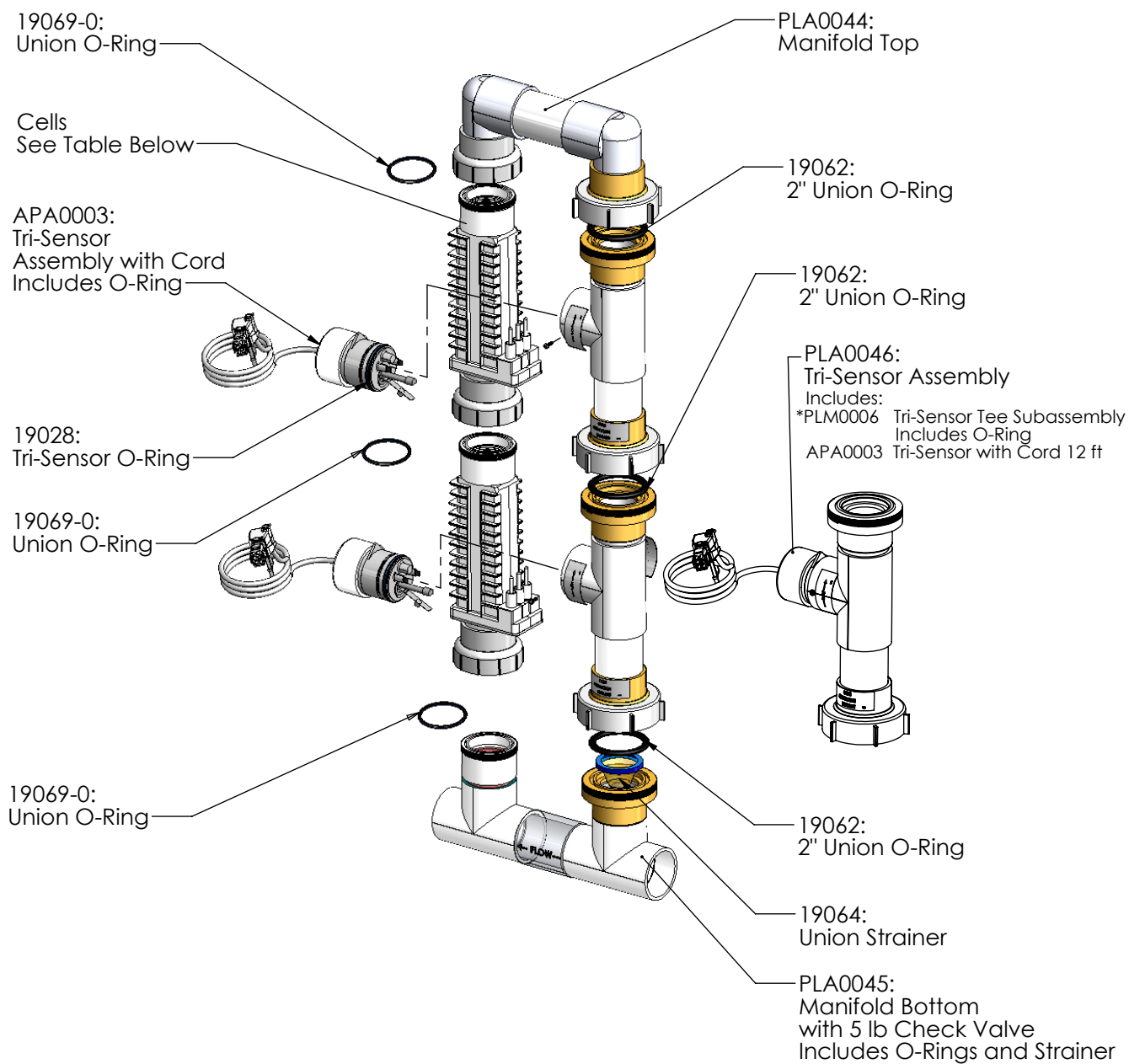
Digital



PART #	DESCRIPTION	PAGE
94105	Manifold Assy with RC35/22 Cell	7
94107	Manifold Assy with RC42 Cell	7
94113	Manifold Assy with RC52 Cell	7
94115C	Manifold Assy with CC15-FF Cell	7
94105M	Manifold Assy with RC35/22 Cell and Metric Adapters	7
94107M	Manifold Assy with RC42 Cell and Metric Adapters	7
94113M	Manifold Assy with RC52 Cell and Metric Adapters	7
94115CM	Manifold Assy with CC15 Cell and Metric Adapters	7
APK0006	Spacer Cell for Maintenance	9

MULTIPLE SYSTEM MANIFOLD

For Use with Dual Power Supply Systems

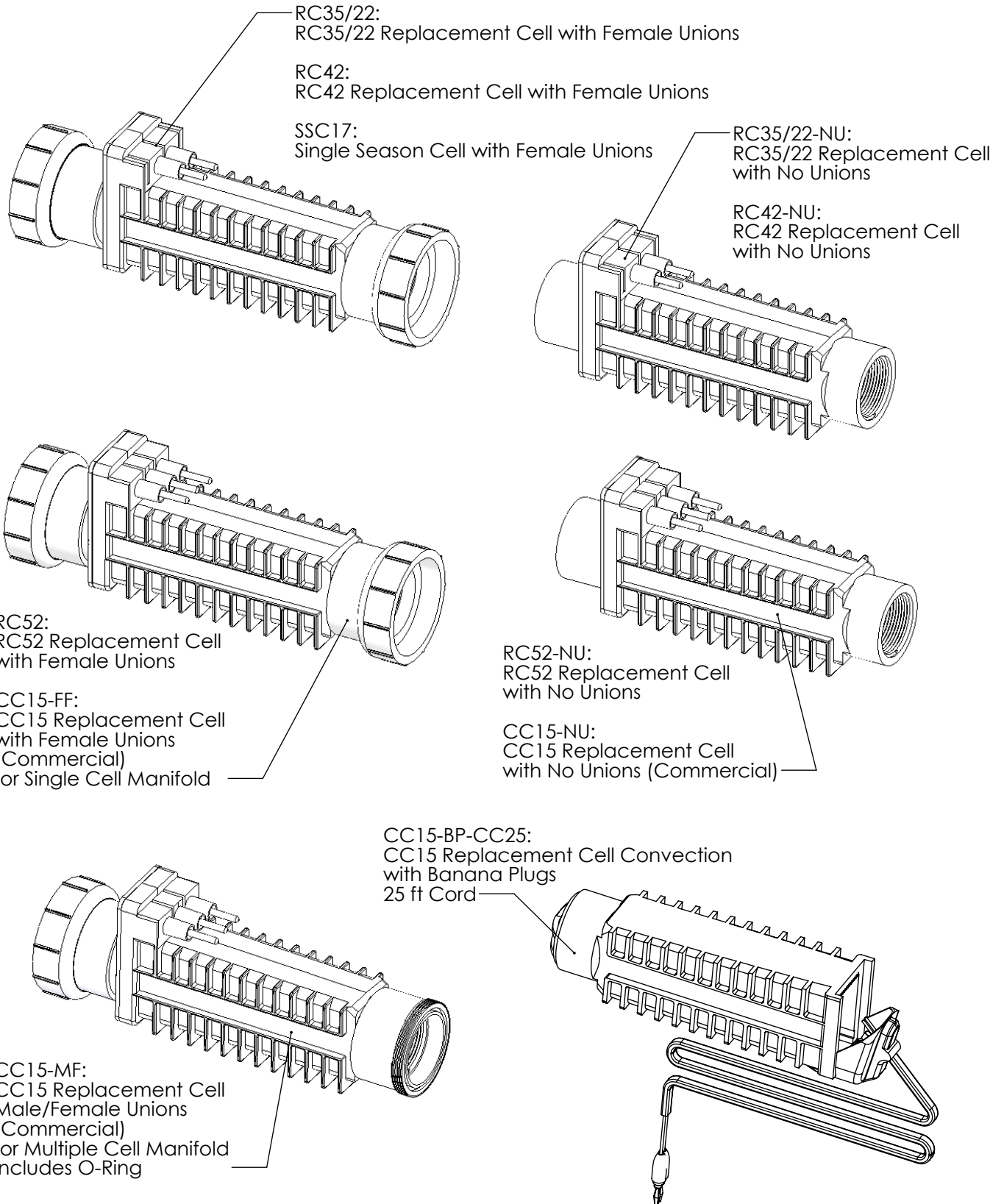


Part #	DESCRIPTION	PAGE #
941-215C-A	Manifold Commercial with 2 CC15-MF Cells	7
ALL	Spacer Cell for Maintenance	9
To convert from dual to triple system, add PLA0046, CC15-MF and Power Supply of choice, ST-220/DIG-220/75003, typically ST-220 is used.		

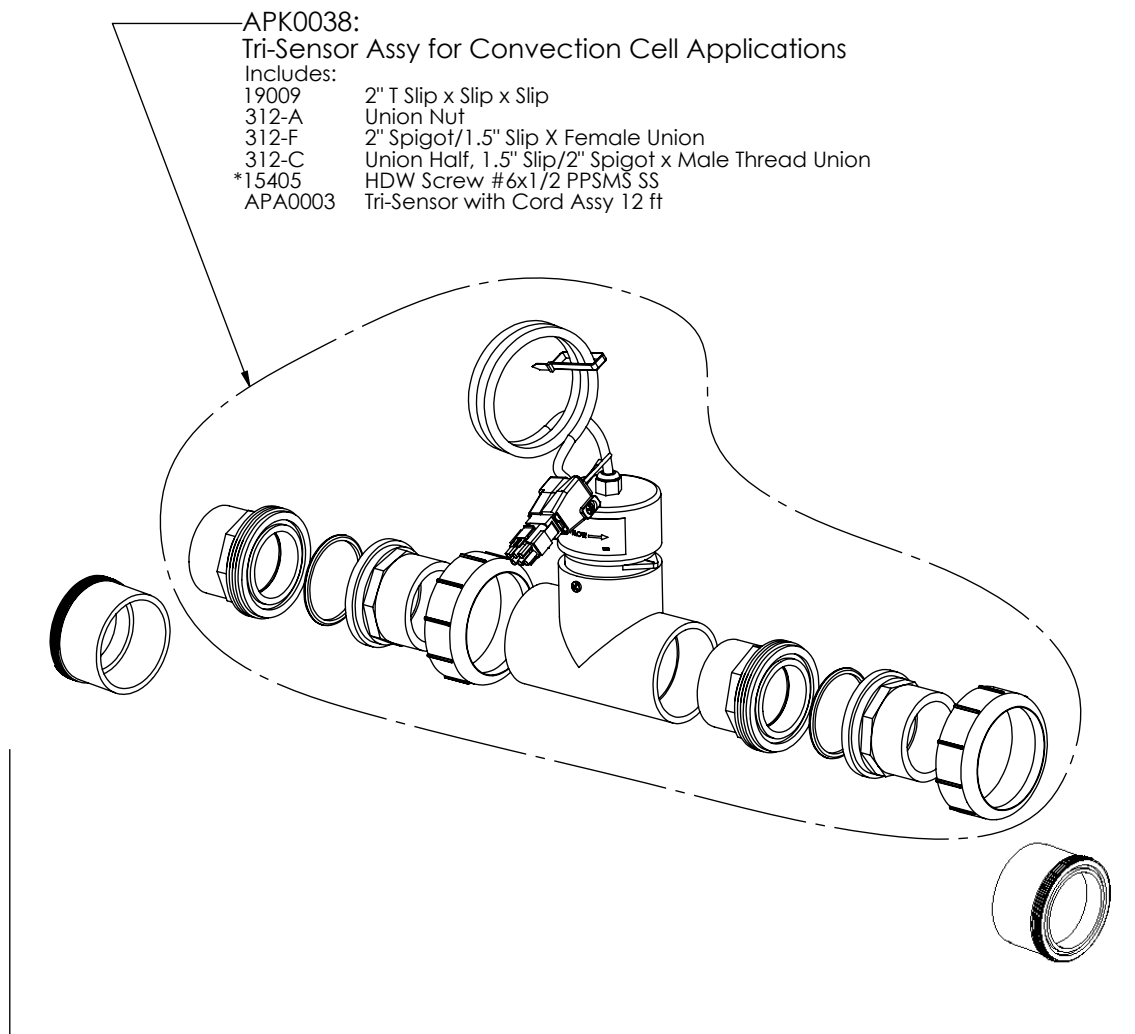
*Cannot be ordered separately

CELL OPTIONS

Digital



MANIFOLD ACCESSORIES/TOOLS

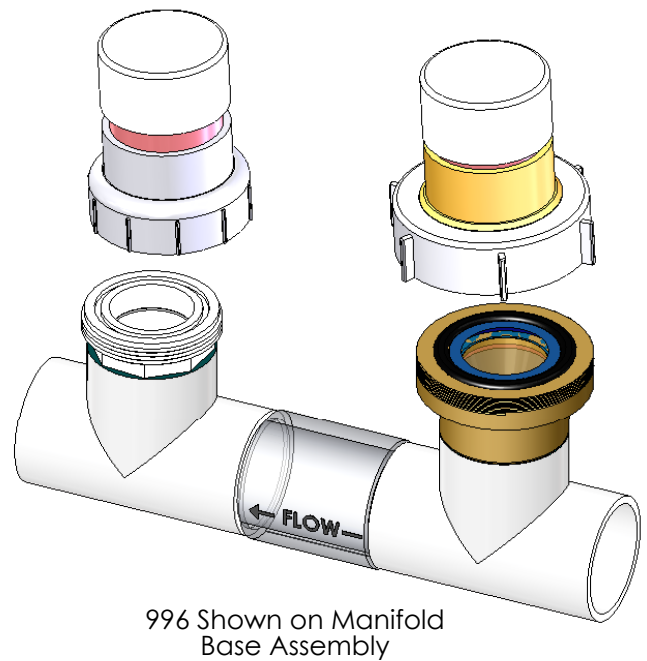
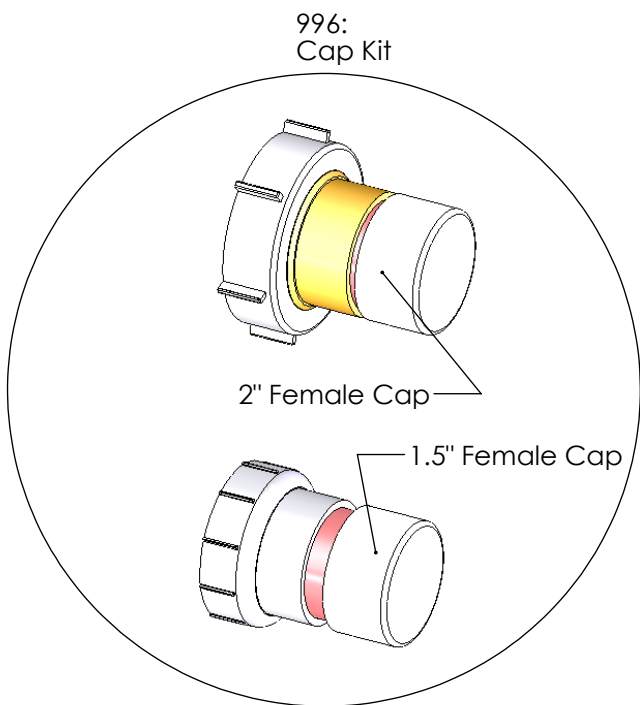
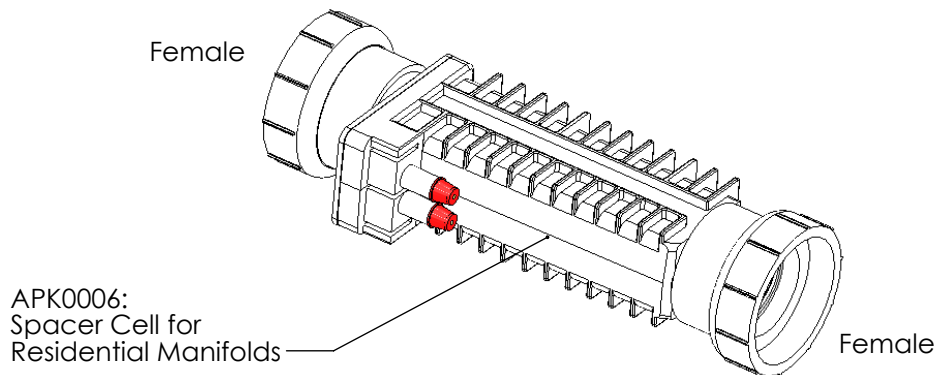
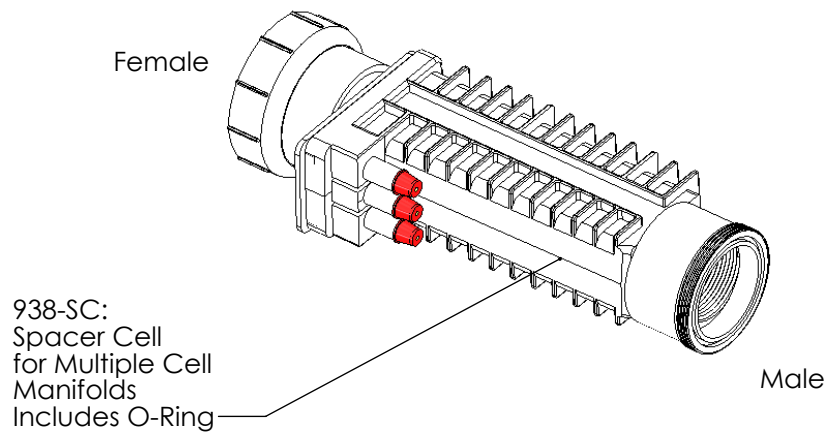


APA0065:
Inline Conversion Kit
Same as APK0038 Kit above but with additional two 312-D
Union Halves, 2 S x MT Union

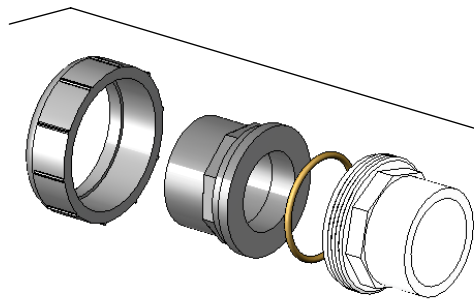
*Cannot be ordered separately

MANIFOLD ACCESSORIES/TOOLS

Digital



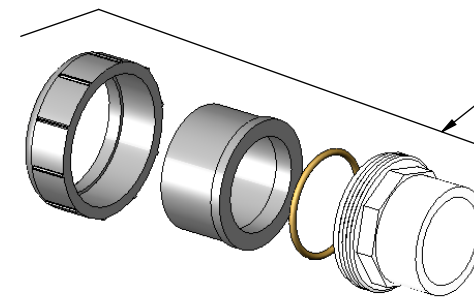
MANIFOLD ACCESSORIES/TOOLS



19073:
Union Kit

Includes:

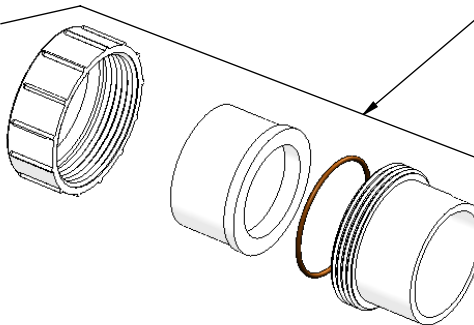
- 312-A Union Nut
- 312-F Union Half, 2" Spigot/1.5" Slip X Female Union
- 19070-0 1-1/2" O-Ring
- 312-C Union Half, 1.5" Slip/2" Spigot x Male Thread Union



19070:
Union Kit

Includes:

- 312-A Union Nut
- 312-B Union Half, 2" Slip x Female Union
- 19070-0 1-1/2" O-Ring
- 312-C Union Half, 1.5" Slip/2" Spigot x Male Thread Union



2627:
Union Kit

Includes:

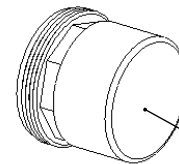
- 312-A Union Nut
- 312-B Union Half, 2" Slip x Female Union
- 312-D Union Half, 2" Slip x Male Thread Union (with O-Ring 19069-0)

or

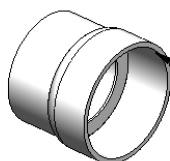
PLS0001:
Union Kit-Pack of 10 PLS2627



STK0048:
Cracked Union Nut
Service Kit



PLA0113:
Cell Cleaning
Kit (Male)



19059:
Metric Adapter
63mm ID Slip x 2" Spigot
Quantity of 2 Needed
Included in Metric Kits
ONLY (Not Glued)