



# AUTOMATIC POOL FILLER MODEL T40-F

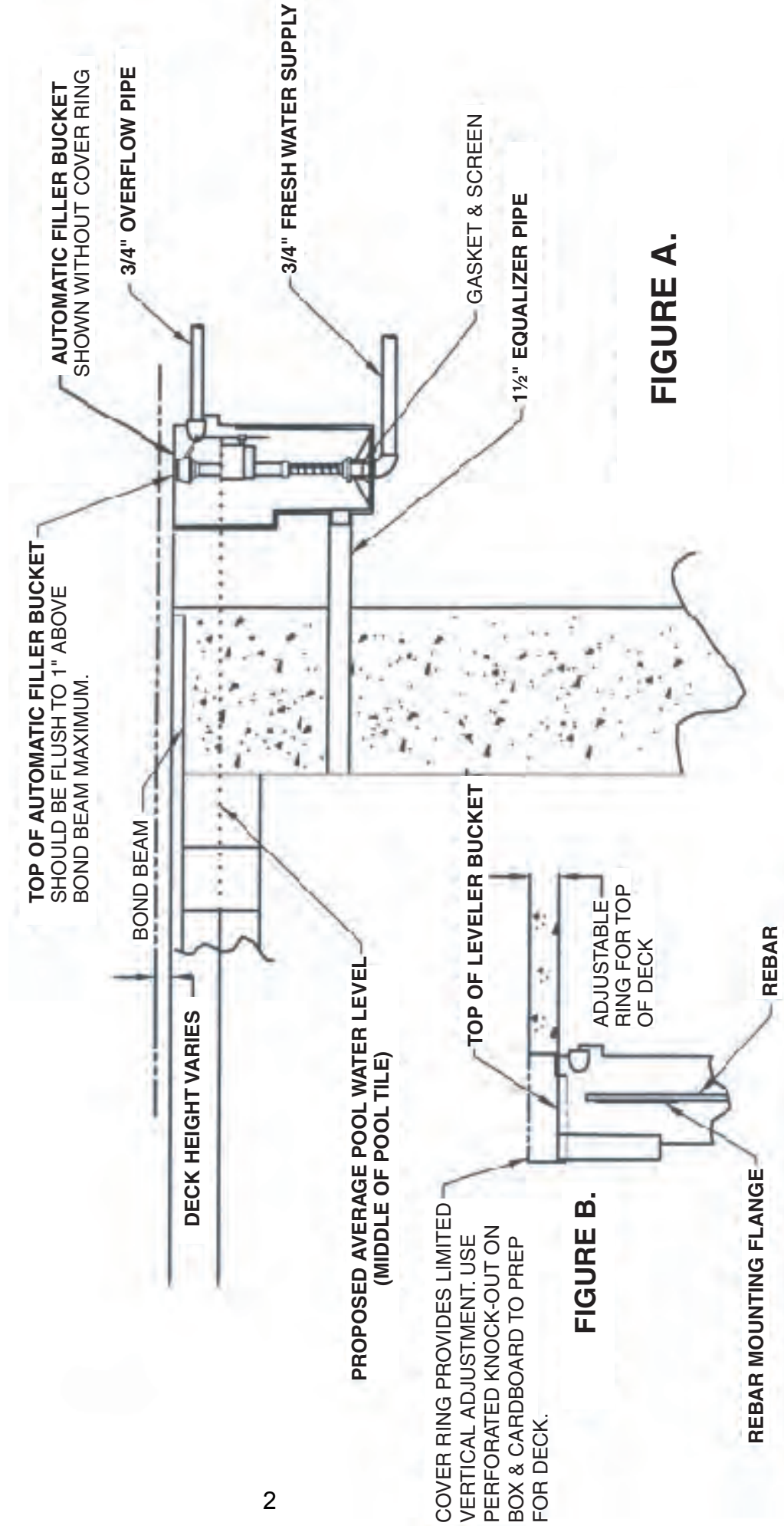
## Installation Instructions

Prior to installation, check local building codes for exceptions to these instructions.

1. Install leveler bucket so top of bucket is flush with bond beam of pool (See Fig. A). Ring and Lid then should be installed flush with deck. Use rebar mounting flanges provided on bucket to insure and aid in keeping bucket level during concrete pour.
2. Install 1½" equalizer pipe. **IMPORTANT:** Equalizer pipe must be straight, as shown in Figure A. The use of any 45° or 90° pipe could cause air lock and void warranty. Use only PVC to ABS transition cement for this application.
3. Connect ¾" fresh water supply pipe to side leveler bucket. (See Fig. A). Special Note: Please allow adequate cure time as per cement manufacturer before applying pressure.
4. You can pressure test auto-fill with supplied fitting P/N 210067. (See Fig. D). **CAUTION:** Do not over tighten.
5. Remove test plug and flush supply line for approximately 60 seconds or until all debris has cleared.
6. Connect ¾" overflow pipe in port (See Fig. A), using a PVC to ABS transition cement.
7. Install valve assembly, Fluidmaster® Valve with PTFE thread seal tape. **IMPORTANT:** Do not use liquid or paste sealers. Pentair Water Pool and Spa, Inc. does not cover warranty if damaged because of over tightening or cross threading.
8. To adjust float height of Fluidmaster® valve, lightly press down the top of fill valve with one hand, while turning clockwise or counter-clockwise to adjust valve. Continue turning until water level is achieved. (See Figure E).

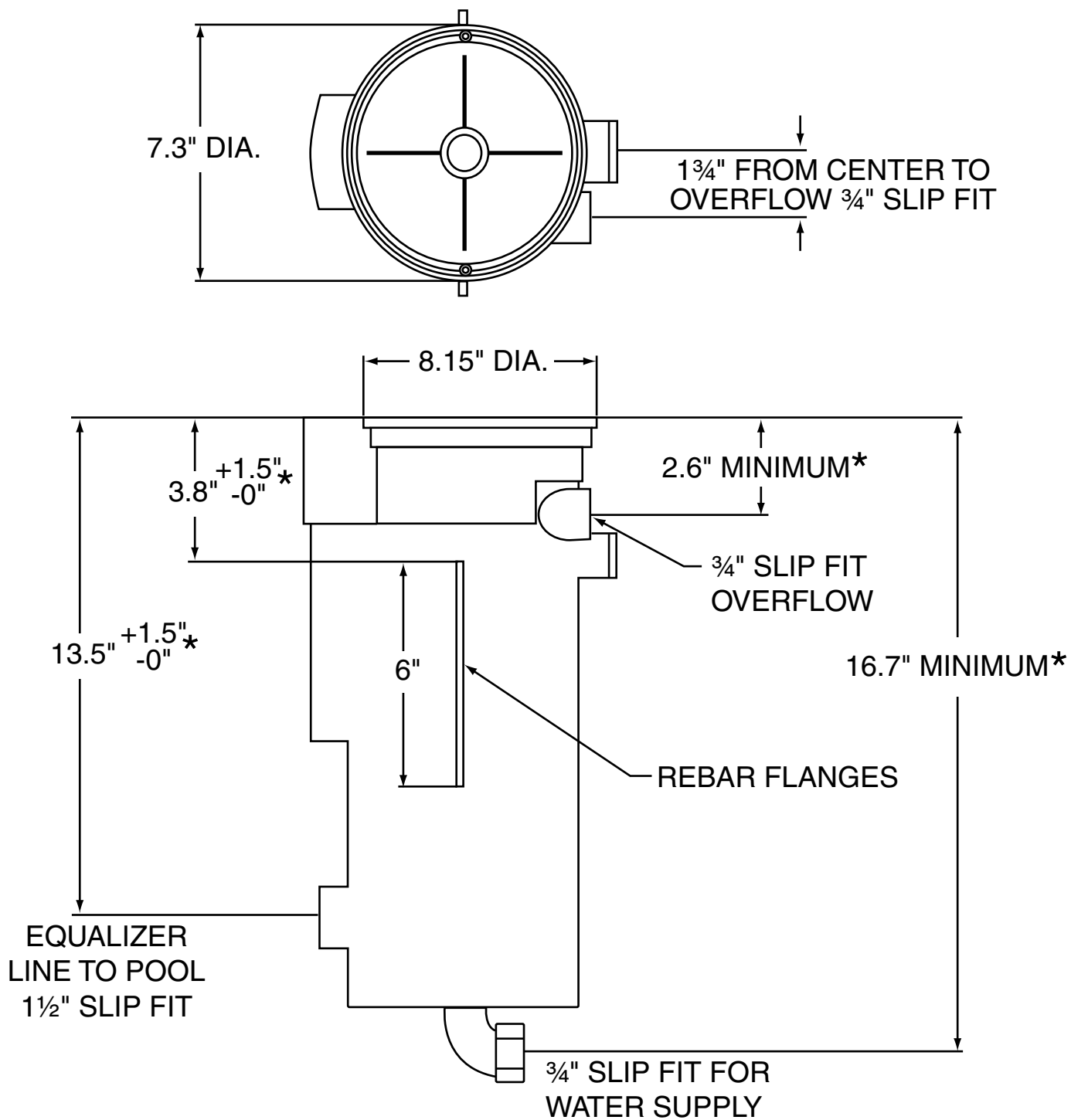
Pentair Water Pool and Spa, Inc.  
1620 Hawkins Ave., Sanford, NC 27330 • (800) 831-7133 • (919) 566-8000  
10951 West Los Angeles Ave., Moorpark, CA 93021 • (800) 831-7133 • (805) 553-5000  
[www.pentairpool.com](http://www.pentairpool.com) or [www.staritepool.com](http://www.staritepool.com)

# AUTOMATIC POOL FILLER INSTALLATION GUIDES Model # T40-F



**FIGURE A.**

**FIGURE B.**



**FIGURE C.**

\* REFER TO FIGURE A OF INSTALLATION INSTRUCTIONS FOR HEIGHT OF DECK CONSIDERATIONS.

## Teat Plug

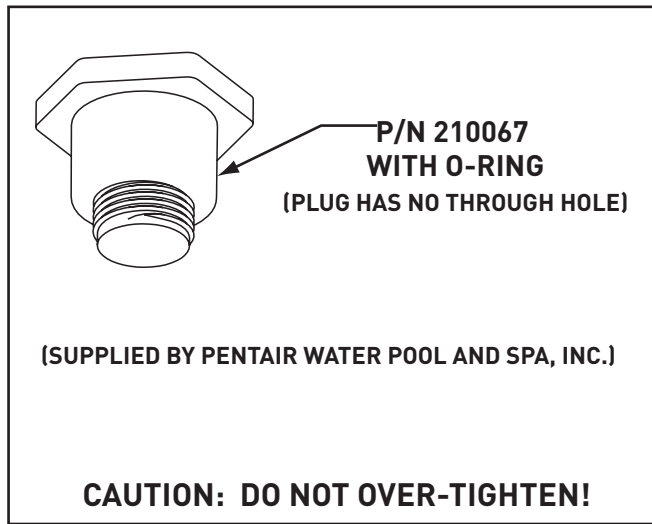
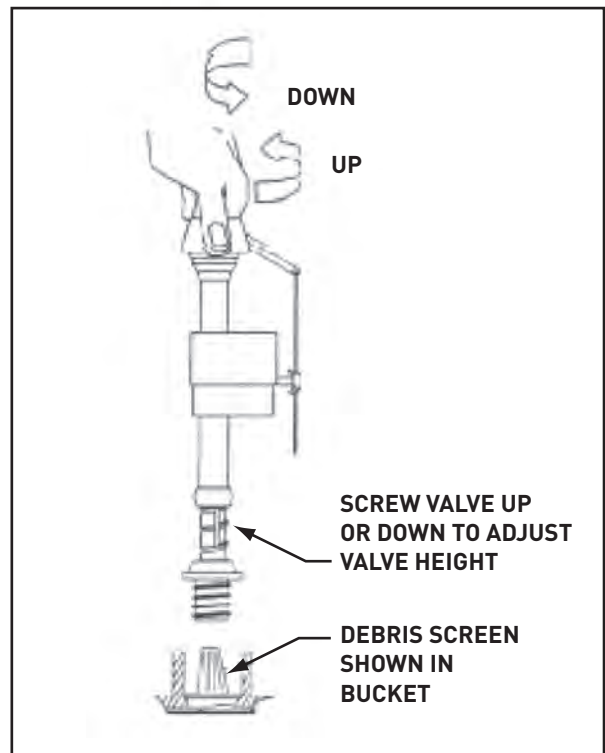
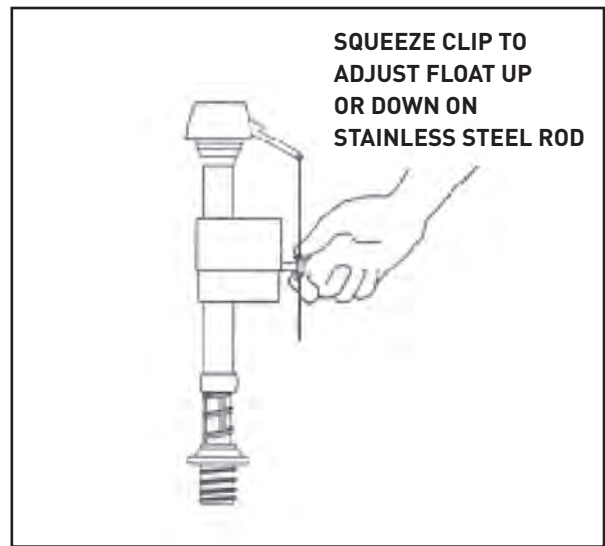


Figure D



TO CLEAR SAND AND DEBRIS FROM SUPPLY LINE,  
REMOVE DEBRIS SCREEN, AND CLEAN SCREEN.  
THEN REINSTALL SCREEN AND VALVE.

Figure E

Pentair Water Pool and Spa, Inc.  
1620 Hawkins Ave., Sanford, NC 27330 • (800) 831-7133 • (919) 566-8000  
10951 West Los Angeles Ave., Moorpark, CA 93021 • (800) 831-7133 • (805) 553-5000  
www.pentairpool.com or www.staritepool.com

All Pentair trademarks and logos are owned by Pentair or one of its global affiliates. Pentair Aquatic Systems®, Flowmaster®, and Rainbow™ are trademarks and/or registered trademarks of Pentair Water Pool and Spa, Inc. and/or its affiliated companies in the United States and/or other countries. Unless expressly noted, names and brands of third parties that may be used in this document are not used to indicate an affiliation or endorsement between the owners of these names and brands and Pentair Water Pool and Spa, Inc. Those names and brands may be the trademarks or registered trademarks of those third parties. Because we are continuously improving our products and services, Pentair reserves the right to change specifications without prior notice. Pentair is an equal opportunity employer.

© 2015 Pentair Water Pool and Spa, Inc. All rights reserved. This document is subject to change without notice.