

REFURBISHING AIDS

POP-UP HEAD EXTENDER

PUHE-1 , PUHE-2
White Gray



- Eliminates prep work
- Fits most size heads with removable center for larger heads
- Cover prevents surface material from getting in heads
- No need to remove heads: Just glue down & remove protective cover after plastering

LIGHT ADAPTER

See page 13 for more details

LAD - 3
LAD - 4



Return Plumbing Extenders

RPE-1.5S

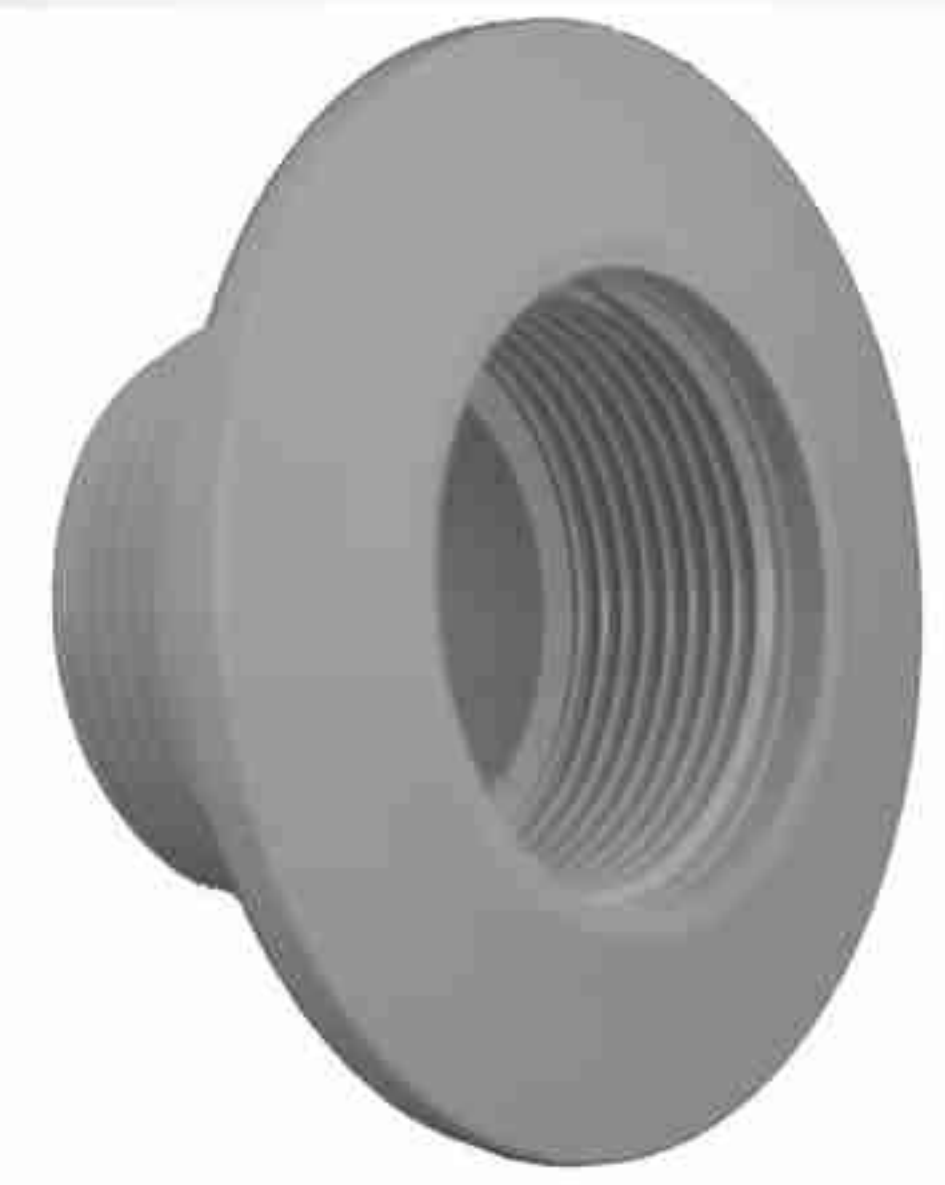
Extends 1 1/2" Standard Female Threaded Fittings by 3/4" to 1".



- Ideal for pools being resurfaced.
- Extends IN-THE-WALL fittings to compensate for additional surface's thickness.
- White PVC material.

RPE-1.5T

Extends 1 1/2" Trim Mount Eyeball Fittings by 3/4" to 1".



RPE-1.5F

Extends 1 1/2" Flush Mount Eyeball Fittings by 3/4" to 1".

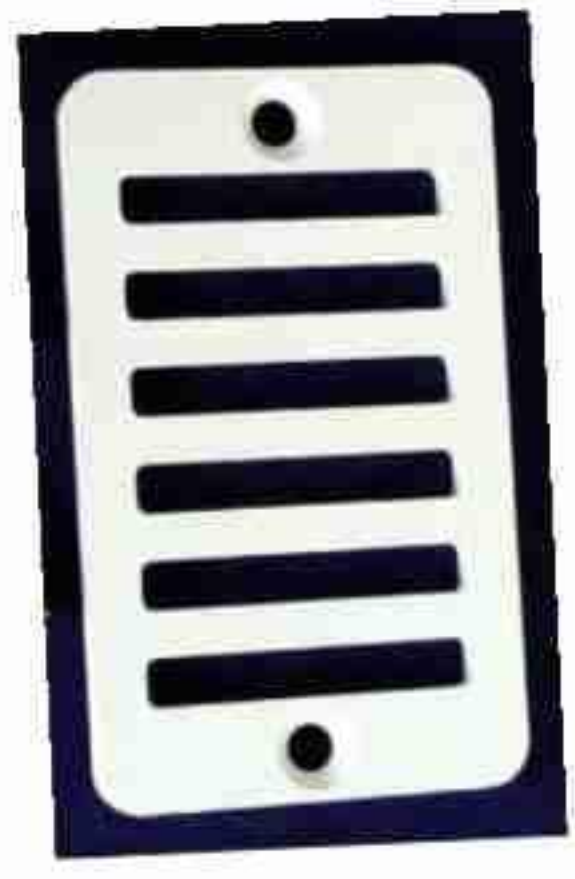


IMPORTANT: When installing a Return Plumbing Extender be sure to seal the male threads with Teflon tape or silicone so as to avoid "behind the surface leaks".

GUTTER DRAIN GRATES

GDG-1, GDG-2, GDG-6

- **2" X 4"** Gutter Drain Grate
- GDG-1 White ABS construction
- GDG-2 Black ABS construction



- **2" X 6"** Gutter Drain Grate
- GDG-6 White ABS construction.

GUTTER DRAIN EXTENDER

GDE-1 White ABS
GDE-2 Black ABS

- Extends Standard 2" x 4" gutter drain by 1/2".
- Holds itself in position while glue or silicone dries.
- Receives standard 2" x 4" grates.



GUTTER DRAIN EXTENSION KIT

GDK-1 White
GDK-2 Black

- Includes:
- 1 ea. Gutter Drain Grate
 - 1 ea. Gutter Drain Extender
 - 2 ea. Stainless Steel Screws.
 - Completely Assembled



LASS ENTERPRISES, Inc.
201 Grace Blvd. - Altamonte Springs, FL 32714
www.lassenterprises.com

gld2658

(407) 682-6334
Fax (407) 682-2180