

150# Malleable Fittings • Spec Sheet

CHINESE

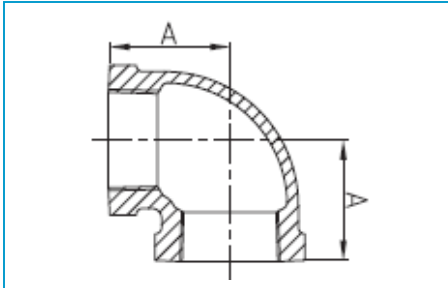


- Black & Galvanized
- Material: ASTM A197/A197M
- Dimensions:
 - ASME B16.3 covering 90° Elbows, 45° Elbows, Couplings, Reducers, 90° Street Elbows, 45° Street Elbows, Caps, Tees
 - ASME B16.39 covering Unions
 - ASME B16.14 covering Bushings, Plugs
- Threads: ASME B1.201
- Available: 1/8" through 6"
- Approvals: UL & FM approved

150# Malleable Fittings • Spec Sheet

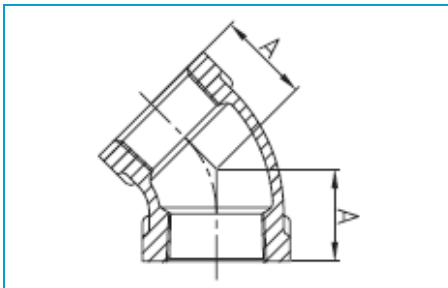
CHINESE

90 Elbow



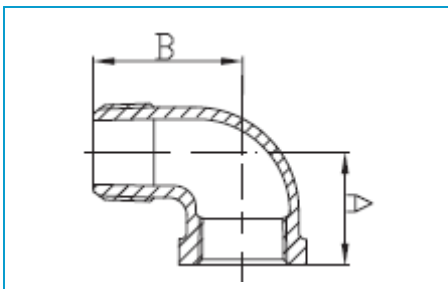
Size	1/8	1/4	3/8	1/2	3/4	1
A	0.69	0.81	0.95	1.12	1.31	1.50
Size	1-1/4	1-1/2	2	2-1/2	3	4
A	1.75	1.94	2.25	2.70	3.08	3.79
Size	5	6				
A	4.50	5.13				

45 Elbow



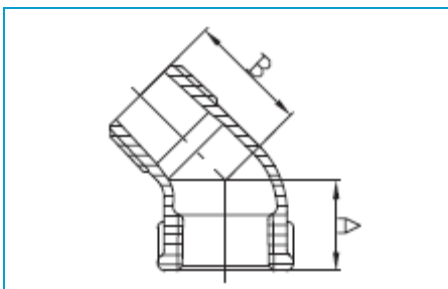
Size	1/8	1/4	3/8	1/2	3/4	1
A	0.63	0.73	0.80	0.88	0.98	1.12
Size	1-1/4	1-1/2	2	2-1/2	3	4
A	1.29	1.43	1.68	1.95	2.17	2.61
Size	5	6				
A	3.05	3.46				

90 Street Elbow



Size	1/8	1/4	3/8	1/2	3/4	1
A	0.69	0.81	0.95	1.12	1.31	1.50
B	1.00	1.19	1.44	1.62	1.89	2.14
Size	1-1/4	1-1/2	2	2-1/2	3	4
A	1.75	1.94	2.25	2.70	3.08	3.79
B	2.45	2.69	3.26	3.86	4.52	5.69

45 Street Elbow

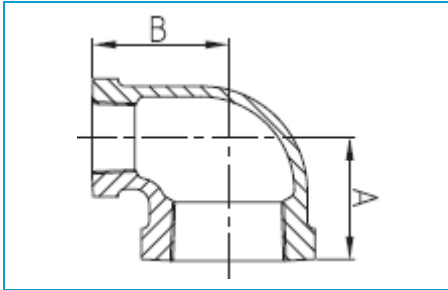


Size	1/8	1/4	3/8	1/2	3/4	1
A	0.63	0.73	0.80	0.88	0.98	1.12
B	0.83	0.94	1.03	1.15	1.29	1.47
Size	1-1/4	1-1/2	2	2-1/2	3	4
A	1.29	1.43	1.68	1.95	2.17	2.61
B	1.71	1.88	2.22	2.57	3.00	3.70

150# Malleable Fittings • Spec Sheet

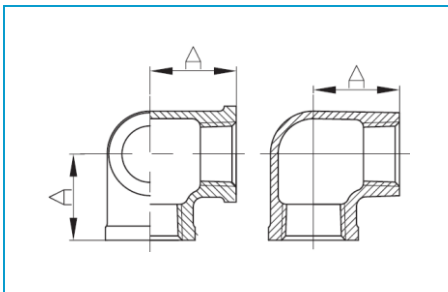
CHINESE

Reducing Elbow



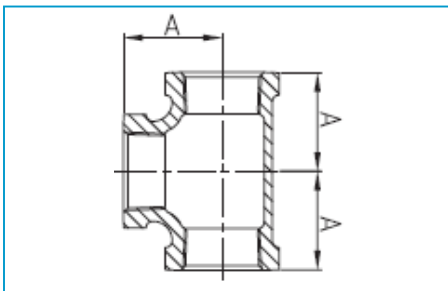
Size	1/4x1/8	3/8x1/8	3/8x1/4	1/2x1/4	1/2x3/8	3/4x1/4	3/4x3/8	3/4x1/2
A	0.74	0.81	0.88	0.97	1.04	1.05	1.12	1.20
B	0.76	0.85	0.90	0.98	1.03	1.08	1.13	1.22
Size	1x1/2	1x3/4	1-1/4x1/2	1-1/4x3/4	1-1/4x1	1-1/2x1/2	1-1/2x3/4	1-1/2x1
A	1.26	1.37	1.34	1.45	1.58	1.38	1.52	1.65
B	1.40	1.45	1.53	1.62	1.67	1.64	1.75	1.80
Size	1-1/2x1-1/4	2x1/2	2x3/4	2x1	2x1-1/4	2x1-1/2	2-1/2x1-1/4	
A	1.82	1.48	1.60	1.73	1.90	2.02	1.99	
B	1.88	1.87	1.97	2.02	2.10	2.16	2.36	
Size	2-1/2x1-1/2	2-1/2x2	3x1-1/2	3x2	3x2-1/2	4x2	4x3	
A	2.16	2.39	2.29	2.52	2.83	2.72	3.30	
B	2.51	2.60	2.84	2.89	2.99	3.43	3.60	

Side Outlet Elbow



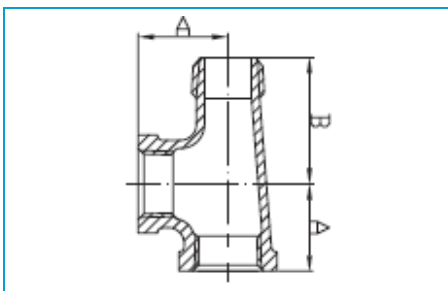
Size	1/2	3/4
A	1.10	1.30

Tee



Size	1/8	1/4	3/8	1/2	3/4	1
A	0.69	0.81	0.95	1.12	1.31	1.50
Size	1-1/4	1-1/2	2	2-1/2	3	4
A	1.75	1.94	2.25	2.70	3.08	3.79
Size	5	6				
A	4.50	5.13				

Street Service Tee

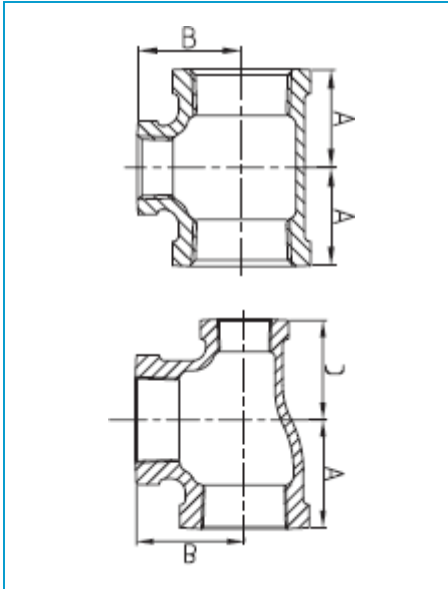


Size	1/2	3/4	1
A	1.12	1.31	1.50
B	1.62	1.89	2.14

150# Malleable Fittings • Spec Sheet

CHINESE

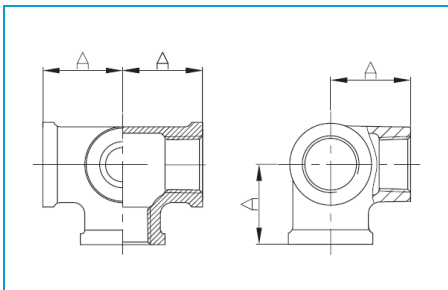
Reducing Tee



Size	1/2x1/4	1/2x3/8	3/4x1/4	3/4x3/8	3/4x1/2	1x1/4	1x3/8	1x1/2	1x3/4
A	0.97	1.04	1.05	1.12	1.20	1.11	1.18	1.26	1.37
B	0.98	1.03	1.08	1.13	1.22	1.22	1.28	1.40	1.45
Size	1-1/4x1/2	1-1/4x3/4	1-1/4x1	1-1/2x1/2	1-1/2x3/4	1-1/2x1-1/4	2x1/2	2x3/4	
A	1.34	1.45	1.58	1.41	1.52	1.82	1.49	1.60	
B	1.53	1.62	1.67	1.66	1.75	1.88	1.88	1.97	
Size	2x1	2x1-1/4	2x1-1/2	2-1/2x1/2	2-1/2x3/4	2-1/2x1	2-1/2x1-1/2		
A	1.73	1.90	2.02	1.62	1.74	1.87	2.16		
B	2.02	2.10	2.16	2.25	2.32	2.37	2.51		
Size	2-1/2x2	3x1	3x1-1/4	3x1-1/2	3x2	3x2-1/2	4x2	4x2-1/2	4x3
A	2.39	2.00	2.17	2.29	2.52	2.83	2.74	3.05	3.30
B	2.60	2.66	2.74	2.80	2.89	2.99	3.41	3.51	3.60
Size	1/2x1/4x1/2	3/4x1/2x1/2	3/4x1/2x3/4	3/4x1/2x1	1x1/4x1	1x1/2x1/2	1x1/2x3/4	1x1/2x1	
A	1.12	1.20	1.31	1.50	1.46	1.26	1.37	1.50	
B	1.12	1.22	1.31	1.34	1.46	1.40	1.45	1.50	
C	0.98	1.12	1.22	1.30	1.18	1.12	1.22	1.40	

Size	1x3/4x3/4	1x3/4x1	1-1/4x1/2x1/2	1-1/4x1/2x3/4	1-1/4x1/2x1-1/4	1-1/4x3/4x1/2	1-1/4x3/4x3/4	1-1/4x3/4x1	1-1/4x3/4x1-1/4	1-1/4x1x1/2	
A	1.37	1.50	1.34	1.38	1.75	1.58	1.45	1.58	1.75	1.34	
B	1.45	1.50	1.50	1.50	1.75	1.67	1.62	1.67	1.75	1.53	
C	1.31	1.45	1.06	1.14	1.53	1.46	1.31	1.45	1.62	1.26	
Size	1-1/4x1x3/4	1-1/4x1x1	1-1/4x1x1-1/4	1-1/2x1/2x1	1-1/2x1/2x1-1/2	1-1/2x3/4x3/4	1-1/2x3/4x1	1-1/2x3/4x1-1/4	1-1/2x3/4x1-1/2	1-1/2x1x1	
A	1.45	1.58	1.75	1.73	1.94	1.50	1.73	1.81	1.94	1.65	
B	1.62	1.67	1.75	1.81	1.94	1.69	1.81	1.89	1.94	1.80	
C	1.37	1.50	1.67	1.34	1.66	1.26	1.38	1.62	1.75	1.50	
Size	1-1/2x1x1-1/2	1-1/2x1-1/4x1/2	1-1/2x1-1/4x3/4	1-1/2x1-1/4x1	1-1/2x1-1/4x1-1/4	1-1/2x1-1/4x1-1/2	2x1/2x2	2x3/4x2	2x1x1		
A	1.94	1.41	1.52	1.65	1.82	1.94	2.25	2.25	1.73		
B	1.94	1.66	1.75	1.80	1.88	1.94	2.25	2.25	2.01		
C	1.80	1.34	1.43	1.58	1.75	1.88	1.88	1.97	1.50		
Size	2x1x1-1/2	2x1x2	2x1-1/4x1	2x1-1/4x1-1/4	2x1-1/4x1-1/2	2x1-1/4x2	2x1-1/2x3/4	2x1-1/2x1	2x1-1/2x1-1/4	2x1-1/2x1-1/2	2x1-1/2x2
A	2.02	2.25	1.58	1.90	2.02	2.25	1.56	1.73	1.90	2.02	2.25
B	2.16	2.25	2.01	2.10	2.16	2.25	1.93	2.02	2.10	2.16	2.25
C	1.80	2.02	1.73	1.75	1.88	2.10	1.48	1.65	1.82	1.94	2.16

Side Outlet Tee

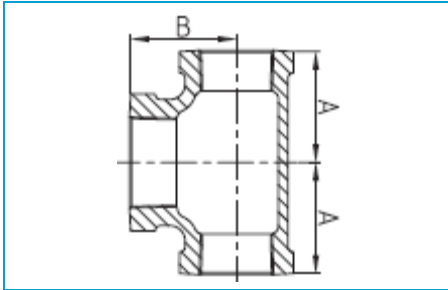


Size	1/2	3/4
A	1.10	1.30

150# Malleable Fittings • Spec Sheet

CHINESE

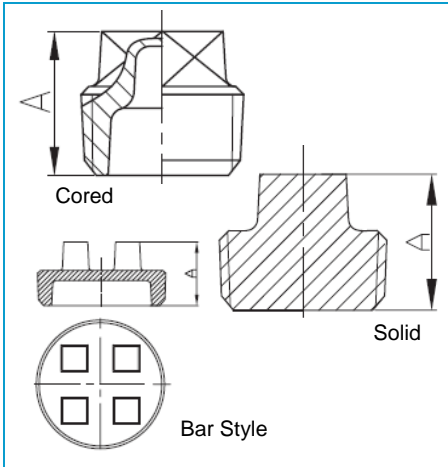
Bull Head Tee



Size	1/2x1/2x3/4	1/2x1/2x1	3/4x3/4x1	1x1x1-1/4	1x1x1-1/2
A	1.22	1.36	1.45	1.67	1.80
B	1.20	1.26	1.37	1.58	1.65

Size	1x1x2	1-1/4x1-1/4x1-1/2	1-1/2x1-1/2x2	2x2x2-1/2
A	2.02	1.88	2.16	2.60
B	1.93	1.82	2.02	2.39

Square Head Plug

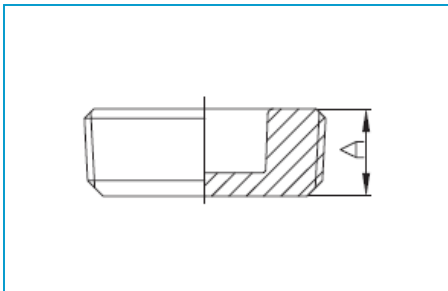


Size	1/8	1/4	3/8	1/2	1/2 (Solid)	3/4
A	0.61	0.72	0.79	0.94	0.94	1.07

Size	1	1-1/4	1-1/2	2	2-1/2	3
A	1.23	1.36	1.45	1.56	1.81	1.93

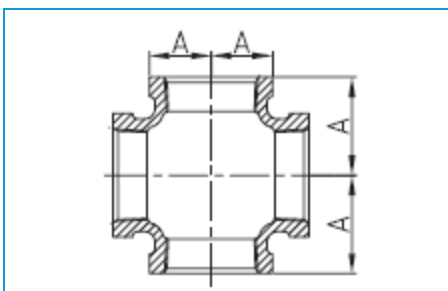
Size	4	4 (Bar Style)	6	6 (Bar Style)
A	2.54	2.22	2.82	2.66

Square Countersunk Plug



Size	1	1-1/2	2
A	0.75	0.83	0.88

Cross



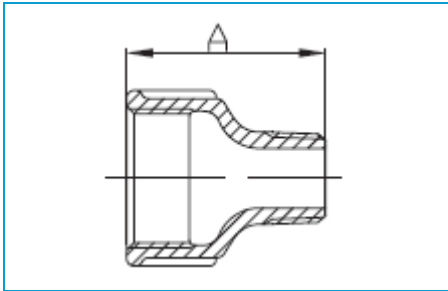
Size	1/4	3/8	1/2	3/4	1
A	0.81	0.95	1.12	1.31	1.50

Size	1-1/4	1-1/2	2	2-1/2
A	1.75	1.94	2.25	2.70

150# Malleable Fittings • Spec Sheet

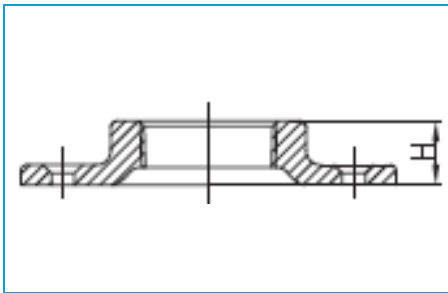
CHINESE

Extension Piece



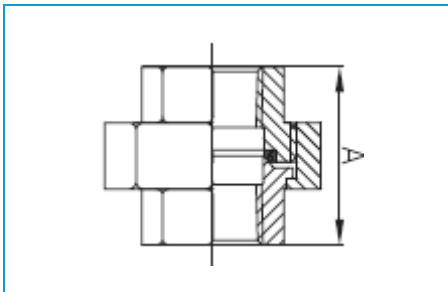
Size	1/2	3/4
A	1.69	1.89

Floor Flange



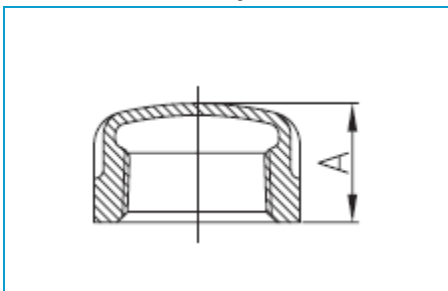
Size	1/4	3/8	1/2	3/4	1
H	0.47	0.55	0.55	0.63	0.67
Size	1-1/4	1-1/2	2		
H	0.75	0.87	0.99		

Union



Size	1/8	1/4	3/8	1/2	3/4	1
A	1.26	1.44	1.62	1.71	1.95	2.07
Size	1-1/4	1-1/2	2	2-1/2	3	4
A	2.27	2.40	2.76	3.23	3.51	3.86

Cap

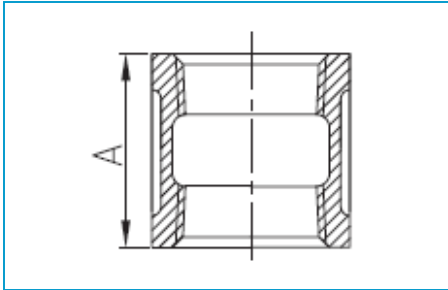


Size	1/8	1/4	3/8	1/2	3/4	1	1-1/4
A	0.53	0.63	0.74	0.87	0.97	1.16	1.28
Size	1-1/2	2	2-1/2	3	4	5	6
A	1.33	1.45	1.70	1.80	2.08	2.32	2.55

150# Malleable Fittings • Spec Sheet

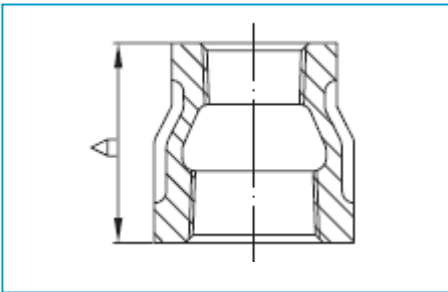
CHINESE

Coupling



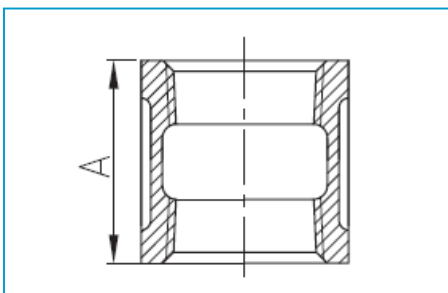
Size	1/8	1/4	3/8	1/2	3/4	1	1-1/4
A	0.95	1.06	1.16	1.34	1.54	1.67	1.93
Size	1-1/2	2	2-1/2	3	4	5	6
A	2.15	2.53	2.88	3.18	3.69	3.74	4.14

Reducing Coupling



Size	1/4x1/8	3/8x1/8	3/8x1/4	1/2x1/8	1/2x1/4	1/2x3/8	3/4x1/8
A	1.00	1.13	1.13	1.25	1.25	1.25	1.44
Size	3/4x1/4	3/4x3/8	3/4x1/2	1x1/4	1x3/8	1x1/2	1x3/4
A	1.44	1.44	1.44	1.69	1.69	1.69	1.69
Size	1-1/4x3/8	1-1/4x1/2	1-1/4x3/4	1-1/4x1	1-1/2x3/8	1-1/2x1/2	1-1/2x3/4
A	2.06	2.06	2.06	2.06	2.31	2.31	2.31
Size	1-1/2x1	1-1/2x1-1/4	2x3/8	2x1/2	2x3/4	2x1	2x1-1/4
A	2.31	2.31	2.81	2.81	2.81	2.81	2.81
Size	2x1-1/2	2-1/2x1/2	2-1/2x3/4	2-1/2x1	2-1/2x1-1/4	2-1/2x1-1/2	
A	2.81	3.25	3.25	3.25	3.25	3.25	
Size	2-1/2x2	3x1/2	3x3/4	3x1	3x1-1/4	3x1-1/2	3x2
A	3.25	3.69	3.69	3.69	3.69	3.69	3.69
Size	3x2-1/2	4x1-1/2	4x2	4x2-1/2	4x3		
A	3.69	4.39	4.39	4.39	4.39		

Right & Left Coupling

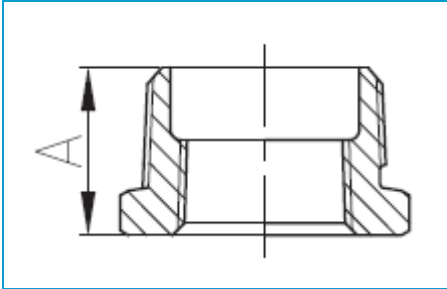


Size	1/2	3/4	1	1-1/4	1-1/2	2
A	1.34	1.52	1.67	1.93	2.15	2.53
Size	2-1/2	3	4			
A	2.88	3.18	3.69			

150# Malleable Fittings • Spec Sheet

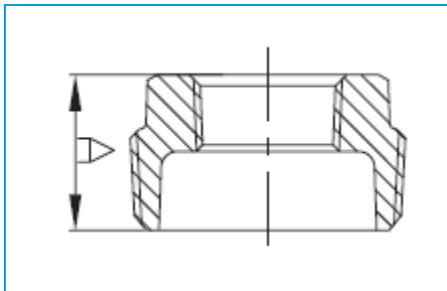
CHINESE

Outside Hex Bushing



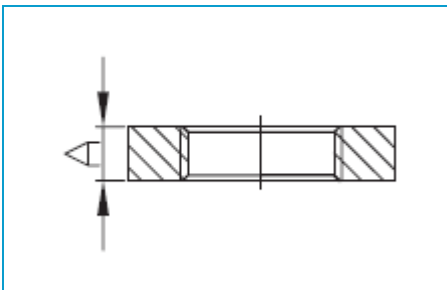
Size	1/4x1/8	3/8x1/8	3/8x1/4	1/2x1/8	1/2x1/4	1/2x3/8	3/4x1/8
A	0.58	0.64	0.64	0.75	0.75	0.75	0.85
Size	3/4x1/4	3/4x3/8	3/4x1/2	1x1/2	1x3/4	1-1/4x3/4	1-1/4x1
A	0.85	0.85	0.85	1.00	1.00	1.08	1.08
Size	1-1/2x1	1-1/2x1-1/4	2x1-1/4	2x1-1/2	2-1/2x1-1/2	2-1/2x2	
A	1.14	1.14	1.22	1.22	1.51	1.44	
Size	3x2	3x2-1/2	4x3	5x4	6x5		
A	1.61	1.53	1.72	1.81	2.03		

Inside Hex Bushing



Size	1x1/8	1x1/4	1x3/8	1-1/4x3/8	1-1/4x1/2	1-1/2x1/4	1-1/2x3/8	
A	1.05	1.05	1.05	1.14	1.14	1.20	1.20	
Size	1-1/2x1/2	1-1/2x3/4	2x1/4	2x3/8	2x1/2	2x3/4	2x1	
A	1.20	1.20	1.29	1.29	1.29	1.29	1.29	
Size	2-1/2x1/2	2-1/2x3/4	2-1/2x1/2	2-1/2x3/4	3x1	3x1-1/4	3x1-1/2	
A	1.51	1.51	1.51	1.51	1.61	1.61	1.61	
Size	4x1	4x1-1/4	4x1-1/2	4x2	4x2-1/2	6x2	6x3	6x4
A	1.82	1.82	1.82	1.82	1.82	2.16	2.16	2.16

Locknut



Size	1/2	3/4	1	1-1/4	1-1/2	2
A	0.31	0.34	0.38	0.42	0.47	0.53

 **MATCO-NORCA**
Global sourcing. National compliance. Local service.

CALIFORNIA 5593 Fresca Dr., La Palma CA 90623
TEXAS 1150 Silber Rd., Houston TX 77055
ILLINOIS 278 Windy Point Dr., Glendale Heights, IL 60139
NEW YORK PO Box 27, Rt.22, Brewster NY 10509
 WEB: www.matco-norca.com

• Phone: 866-532-8306 • Fax: 866-532-8307
 • Phone: 800-935-5456 • Fax: 713-680-2999
 • Phone: 844-412-5068 • Fax: 800-640-2252
 • Phone: 800-431-2082 • Fax: 845-278-9056
 EMAIL: mail@matco-norca.com