

# PRODUCT INFORMATION PACKET



Model No: EPA16SQ  
Catalog No: EPA16SQ

VGreen® Variable Speed Motors Pool Pump Motor, 1.65 HP, 1 Ph, 60 Hz, 208-230 V, 3600 RPM, 48Y Frame, TEFC



Regal and Century are trademarks of Regal Rexnord Corporation or one of its affiliated companies.  
©2022 Regal Rexnord Corporation, All Rights Reserved. MC017097E





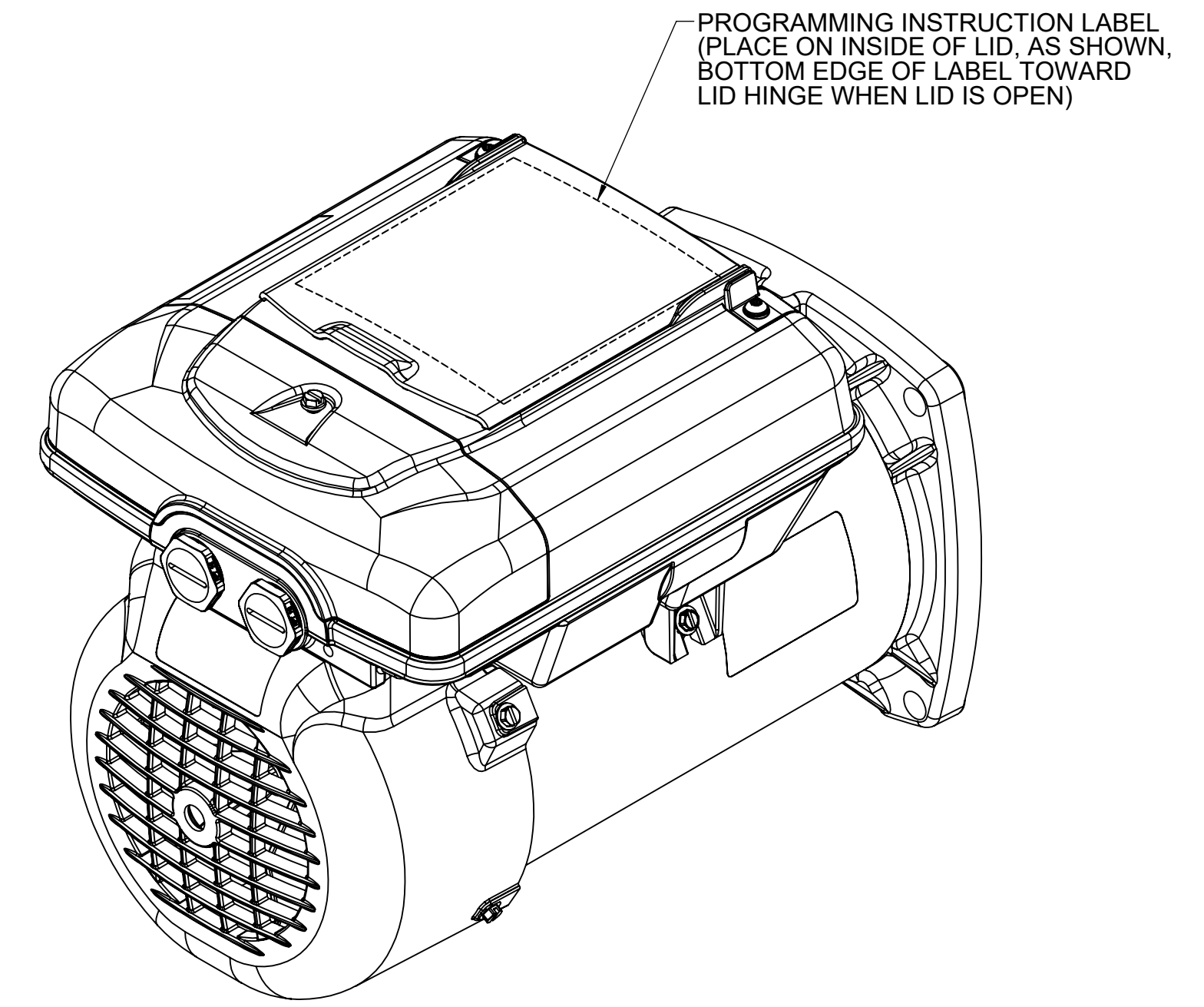
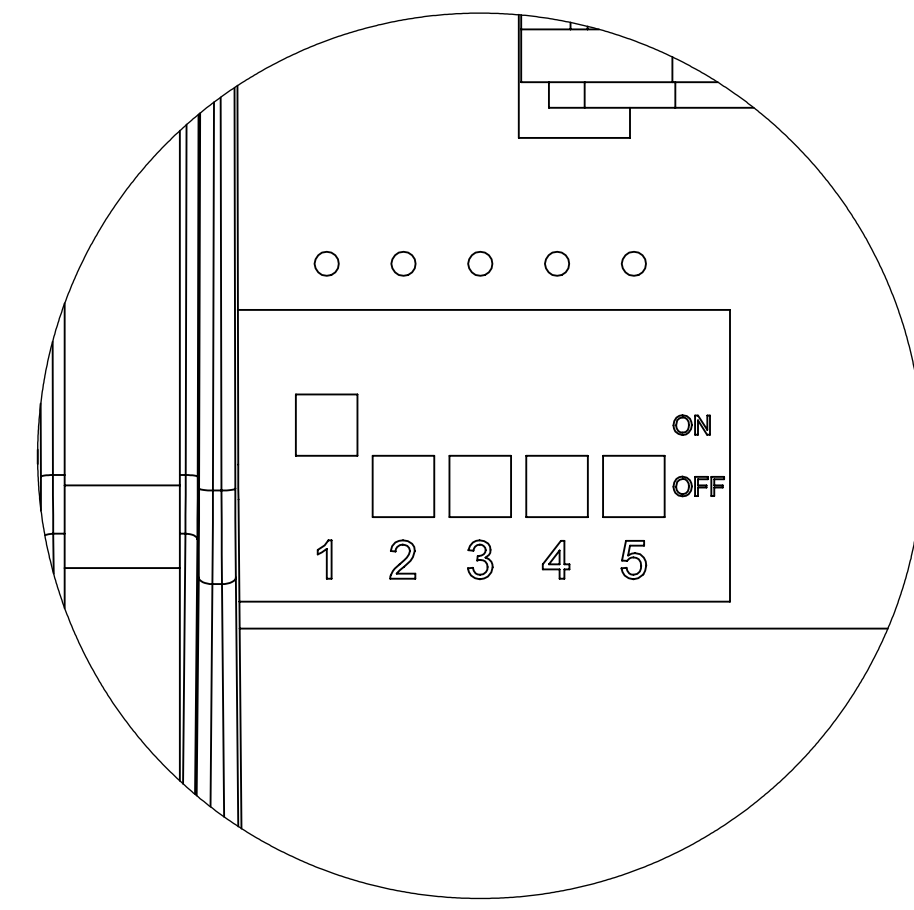
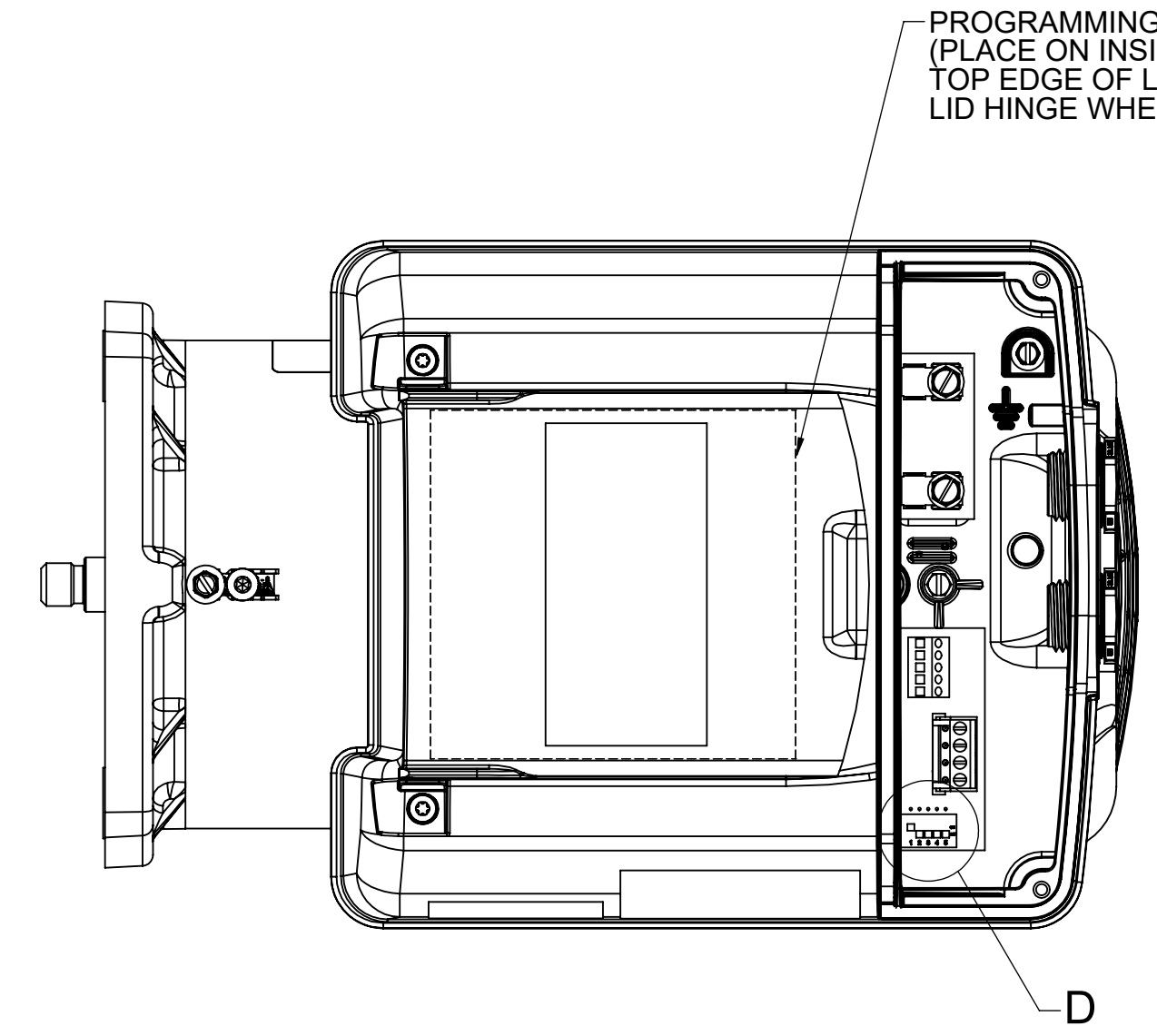
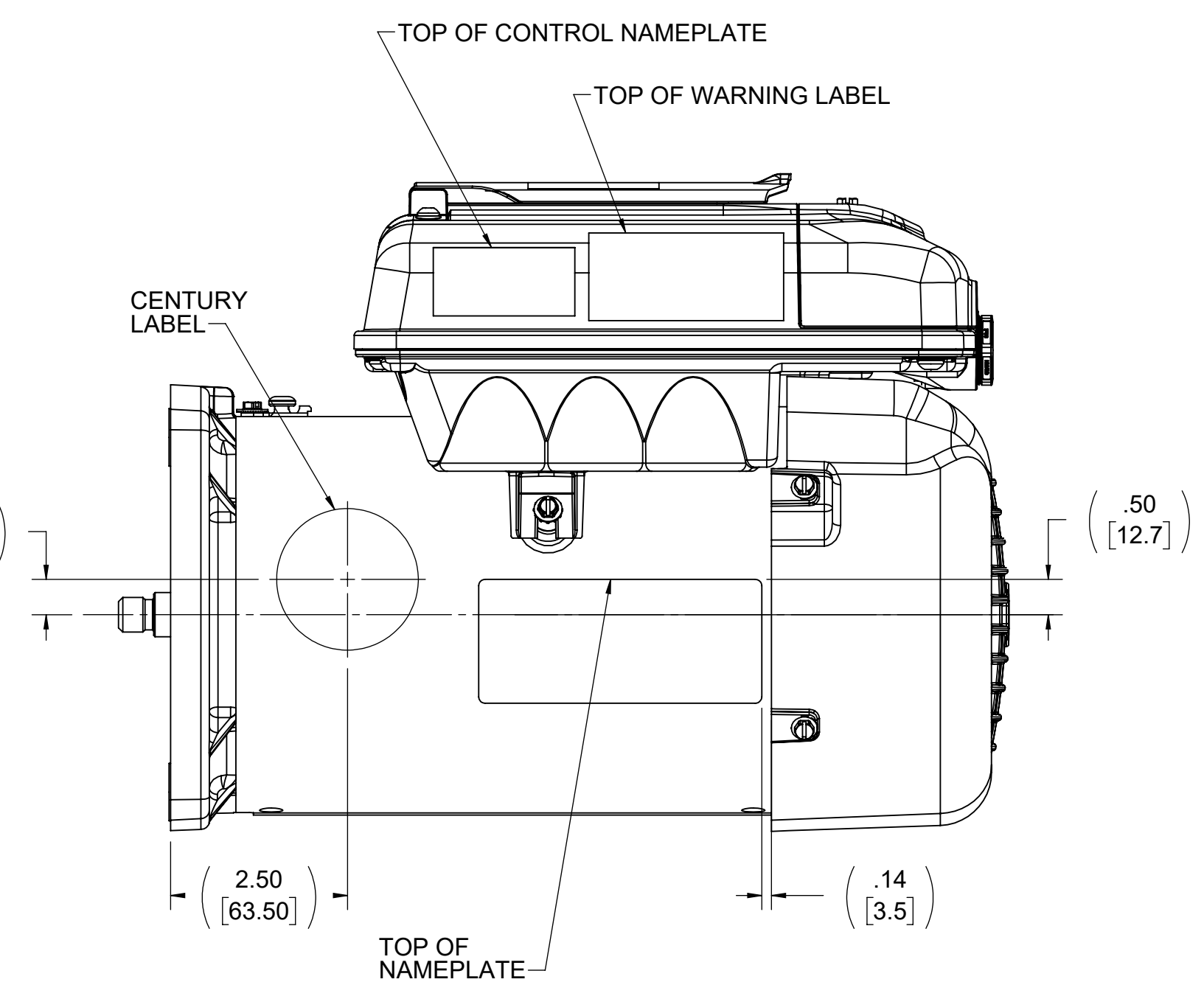
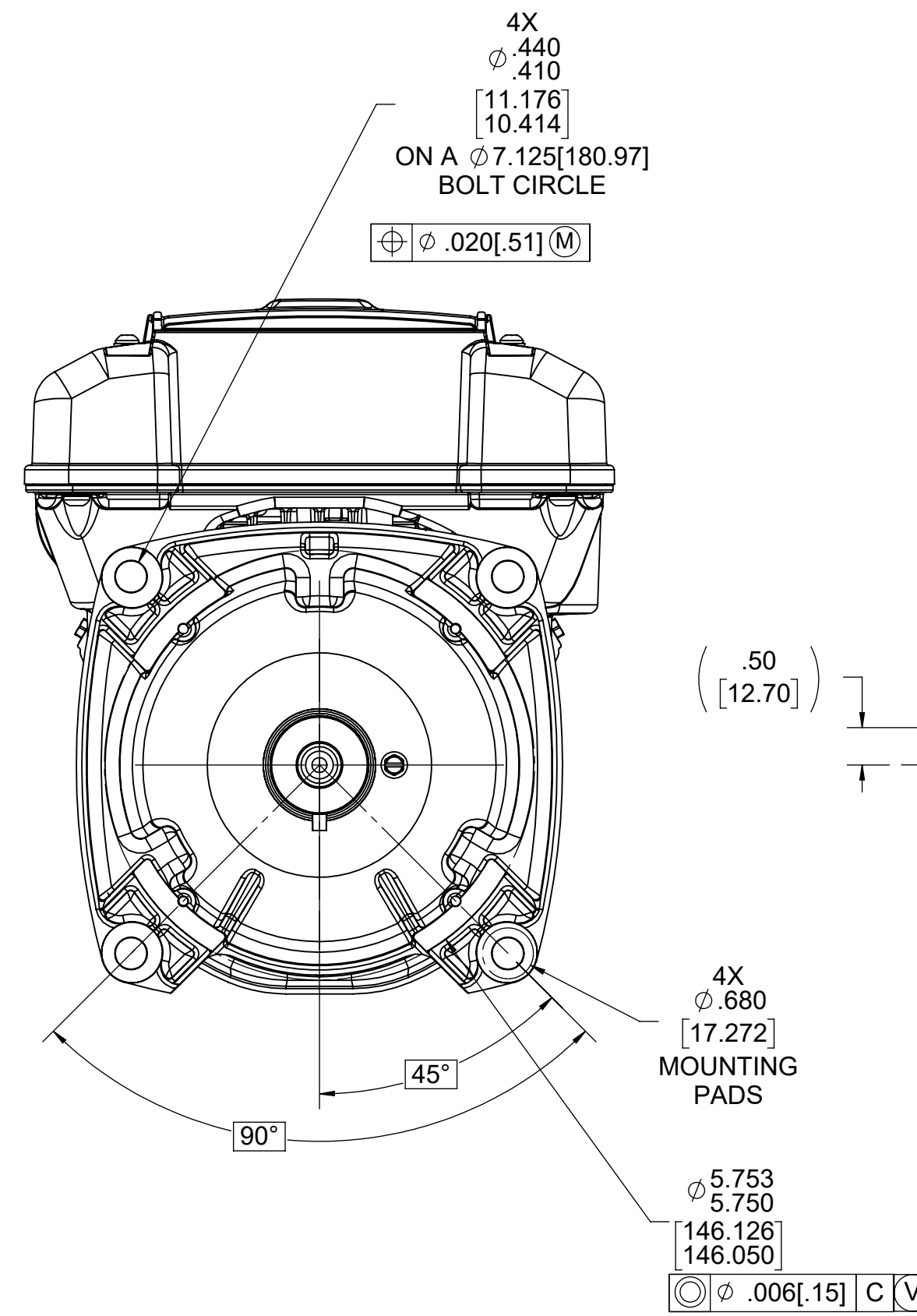
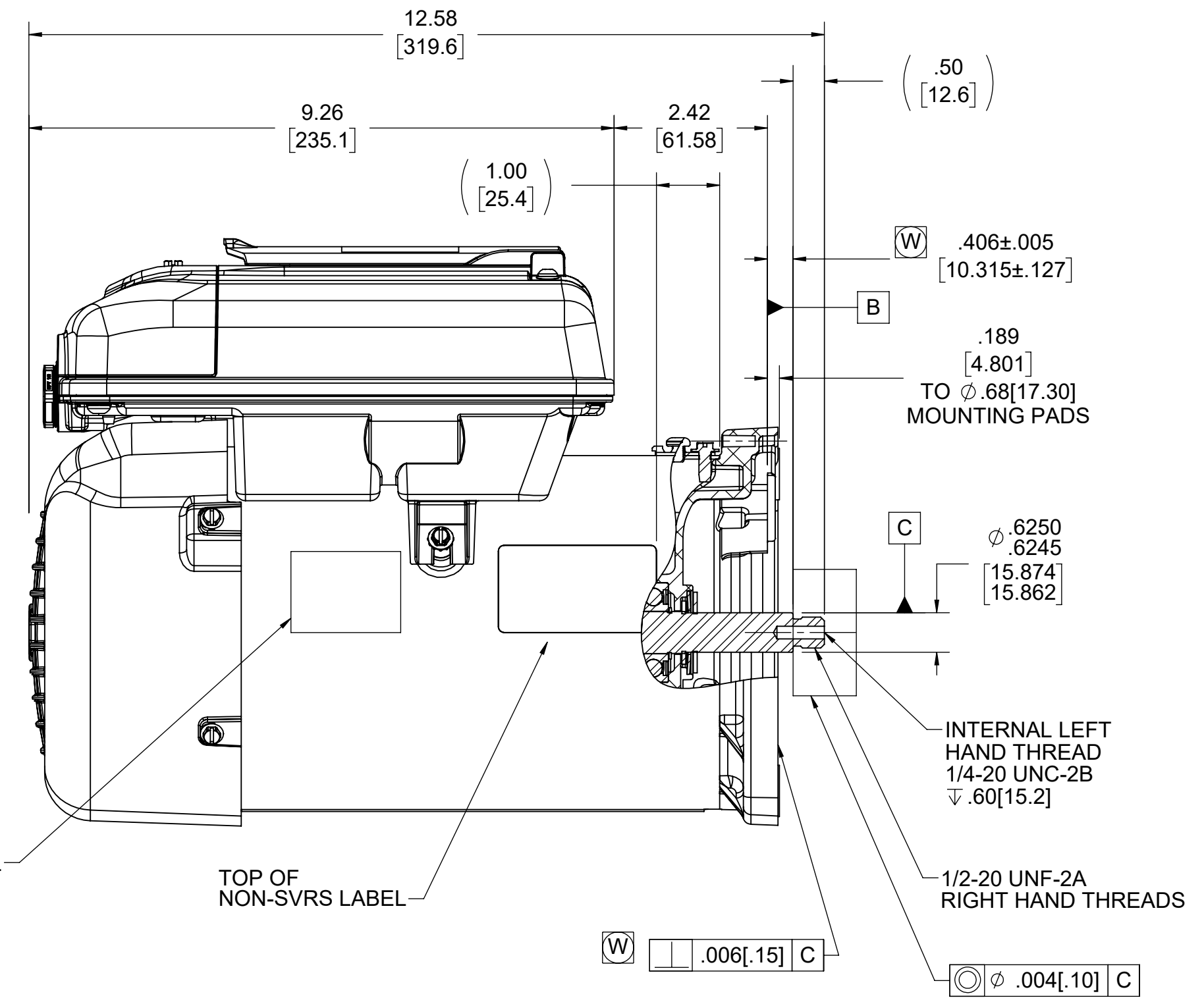
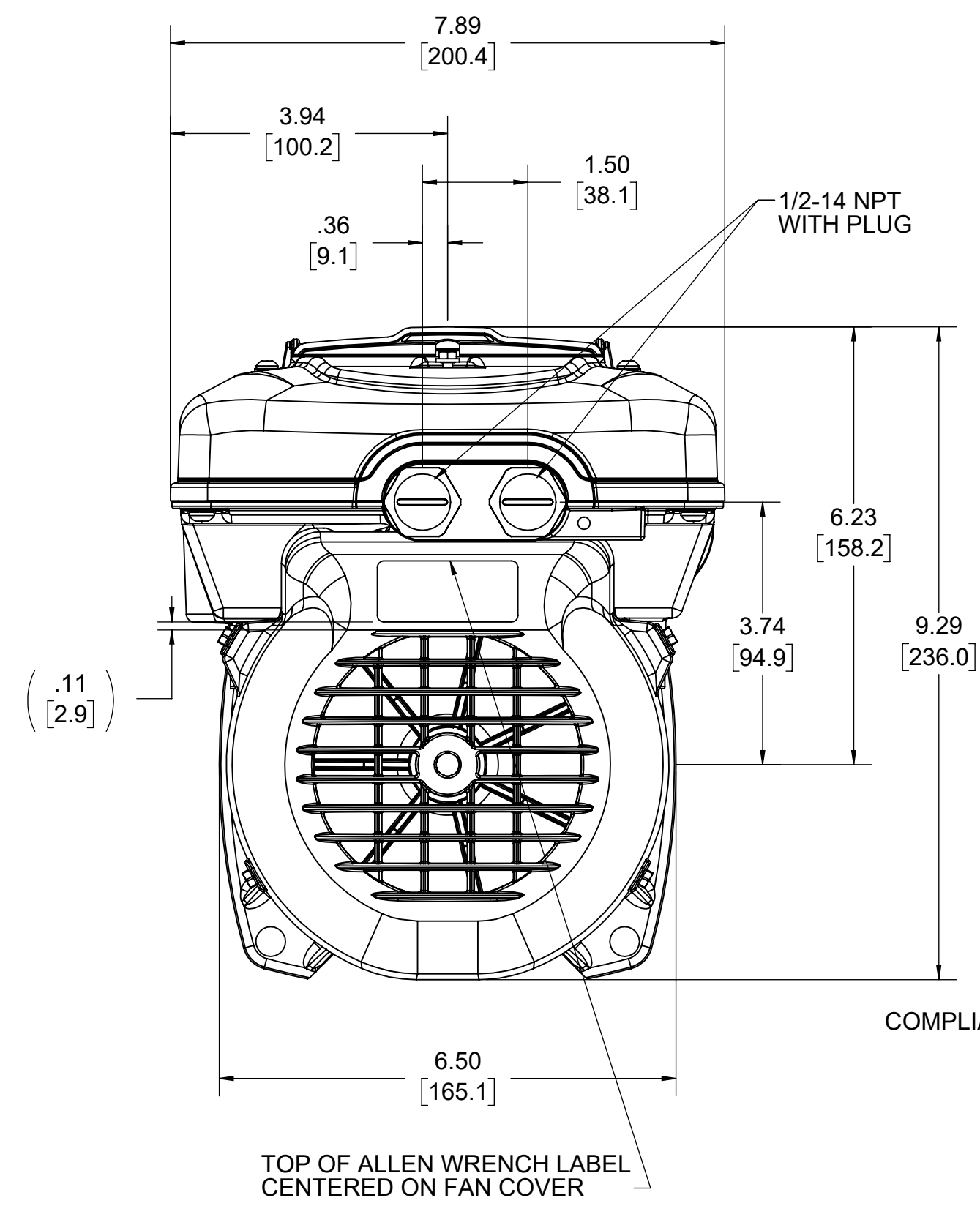
**Nameplate Specifications**

Output HP	<b>1.65 Hp</b>	Output KW	<b>1.2 kW</b>
Frequency	<b>60 Hz</b>	Voltage	<b>208-230 V</b>
Current	<b>10.5-10.0 A</b>	Speed	<b>600-3450 rpm</b>
Service Factor	<b>1</b>	Phase	<b>1</b>
Duty	<b>Continuous</b>	Insulation Class	<b>F</b>
Frame	<b>48Y</b>	Enclosure	<b>Totally Enclosed Fan Cooled</b>
Thermal Protection	<b>Automatic</b>	Ambient Temperature	<b>50 °C</b>
UL	<b>Recognized</b>	CSA	<b>N</b>
Number of Speeds	<b>2</b>		

**Technical Specifications**

Electrical Type	<b>Permanent Magnet Motor</b>	Starting Method	<b>Across The Line</b>
Poles	<b>2</b>	Rotation	<b>Counterclockwise Pump End</b>
Mounting	<b>Round</b>	Motor Orientation	<b>Horizontal</b>
Drive End Bearing	<b>Ball</b>	Opp Drive End Bearing	<b>Ball</b>
Frame Material	<b>Rolled Steel</b>	Shaft Type	<b>1/2 Thread</b>
Overall Length	<b>12.58 in</b>	Frame Length	<b>7.81 in</b>
Shaft Diameter	<b>0.625 in</b>	Shaft Extension	<b>0.90 in</b>
Outline Drawing	<b>EPA16SQ</b>	Connection Drawing	<b>User Manual</b>

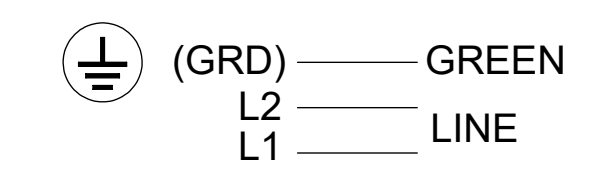
This is an uncontrolled document once printed or downloaded and is subject to change without notice. Date Created:11/29/2022



NAMEPLATE DATA			
MODEL NUMBER	M48AB15A01	CUSTOMER MODEL NUMBER	EPA16SQ
HP	1.65	TYPE	M
VOLTS	208-230	FRAME SIZE	48Y
AMPS	10.5-10.0	PHASE	1
KW	1.23	INSULATION CLASS	F
SF AMPS	-	AMBIENT TEMPERATURE	50 °C
HERTZ	60/50	DUTY	CONT
REVOLUTIONS PER MINUTE	600-3450	ENCLOSURE	TEFC
SERVICE FACTOR	1.00	ELECTRONICALLY PROTECTED	
ROTATION	CWLE	CODE	NA
PERFORMANCE CURVE NUMBER	-	FORM	-
CUSTOMER	DISTRIBUTION	APPROVED SAMPLE	-

- NOTES:
1. END PLAY NOT TO EXCEED .010[.25] MEASURED WITH NO THRUST
  2. ALL DIMENSIONS SHOWN IN PARENTHESES ARE REFERENCE DIMENSIONS.
  3.  IDENTIFIES CRITICAL CHARACTERISTICS  
EXPECTED CAPABILITY:  
Cpk 2.0 OR 100% TESTING
- IDENTIFIES MAJOR CHARACTERISTICS  
EXPECTED CAPABILITY:  
Cpk 1.33 OR GREATER  
UNLESS OTHERWISE SPECIFIED

EXTERNAL CONNECTION DIAGRAM



DRAWING REVISION G	REVISION BY SHESHI	DATE 09/30/2021	TOLERANCES UNLESS OTHERWISE SPECIFIED: DEC. INCH mm ANGLE X +0.1 [12.5] .XX ±0.02 [±0.51] XXX ±0.005 [±0.127] XXXX ±0.0005 [±0.0127]	DRAWN BY J. JOHNS	DATE 4/22/2015	APPROVED BY M. OVERHOLSER	DATE 4/22/2015	DESCRIPTION OUTLINE
ECONOMY DESCRIPTION ECO-0211353 D.SURYAWANSHI 09/30/2021			REMOVE BURRS & BREAK SHARP EDGES: .003 [0.076] X 45° CORNER FILLETS: R.02 [0.51] MACHINED SURFACES: 125/32/ INCH 32/ mm SHOWN IN [BRACKETS]	REGAL™ Regal Beloit America, Inc.	MATERIAL MODEL-PFHP-48FR-ECM	PROCESS/FINISH	SIZE D	DRAWING NUMBER EPA16SQ
<small>           COPYRIGHT REGAL BELLOIT AMERICA, INC. ALL RIGHTS RESERVED.            PROPRIETARY AND CONFIDENTIAL INFORMATION - THIS DOCUMENT IS THE PROPERTY OF REGAL BELLOIT AMERICA, INC. OWNERS AND CONTAINS OWNERS PROPRIETARY INFORMATION. ANY PERSON, CORPORATION OR OTHER FIRM RECEIVING IT IS DEEMED BY RECEIVING IT, TO AGREE THAT IT, AND/OR ANY PART OF IT, SHALL NOT BE DISCLOSED TO ANY PERSON, CORPORATION OR OTHER ENTITY, DUPLICATED, AND/OR USED, EXCEPT AS EXPRESSLY APPROVED IN WRITING IN ADVANCE BY OWNER. THIS DOCUMENT SHALL BE RETURNED TO OWNER UPON REQUEST. IT MAY BE SUBJECT TO CERTAIN RESTRICTIONS UNDER APPLICABLE EXPORT CONTROL LAWS AND REGULATIONS.         </small>								SHEET 1 OF 1