

4

3

2

1

D

C

D

C

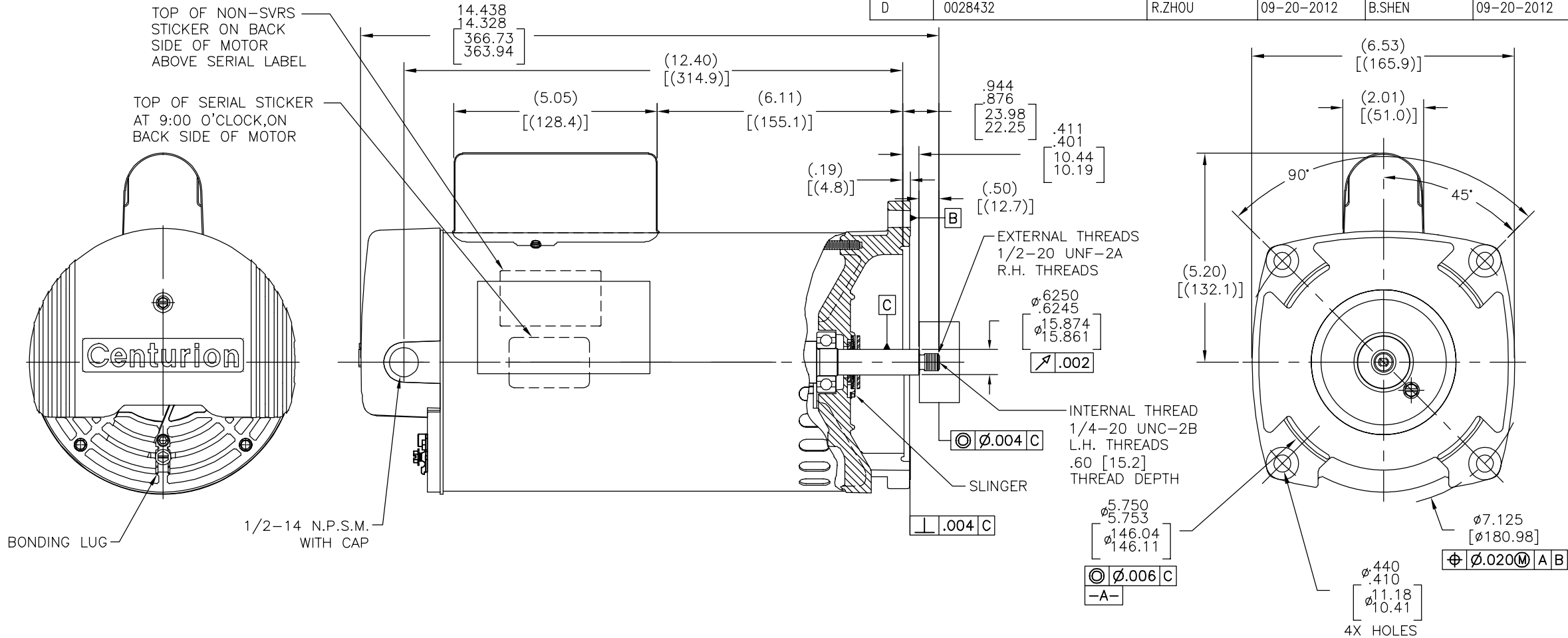
B

B


A

A

REV	ECO	REV BY	DATE	APPD	DATE
D	0028432	R.ZHOU	09-20-2012	B.SHEN	09-20-2012



NAMEPLATE DATA	EXTERNAL CONNECTION DIAGRAM	NOTES
MODEL: 196262 CUST PN: B2858 HP: 1.5 SF: 1.5 ROT: CCWPE RPM: 3450 TYPE: CX CODE: K FORM: FRAME: Y 56 Y VOLTS: 230/115 AMPS: - MAX AMPS: - SF AMPS: 10.5/21.0 PH: 1 HZ: 60 INS: F AMB: 50 C DUTY: CONT ENCLOSURE: ODP THERMALLY PROTECTED	<p>175367-29</p> <p>USE COPPER CONDUCTORS ONLY. INSTALL MOTOR WITH VENTS DOWN. ACCEPTABLE FOR FIELD WIRING</p>	1. FOR THREADED SHAFT EXTENSION ECCENTRICITY OF THREADED PORTION OF SHAFT IS HELD WITHIN .004[.10] TOTAL GAGE READING WITH THE INDICATOR ON O.D. OF GROUND RING GAGE AS SHOWN. THE GAGE BEING STATIONARY WITH RESPECT TO THE ROTOR. 2. END PLAY NOT TO EXCEED .010[.25] MEASURED WITH NO THRUST. 3. FINISH PAINT TO BE BLACK. 4. REFERENCE MODEL: B858. 5. CONNECTED FOR 230V. DUAL VOLTAGE MOTOR. SEE CONNECTION DIAGRAM TO CHANGE VOLTS TO 115V.

PERFORMANCE CURVE		APPROVED SAMPLE		<div>GEOMETRIC CHARACTERISTICS & SYMBOLS</div> <div>□ FLATNESS</div> <div>— STRAIGHTNESS</div> <div>⊥ ANGULARITY</div> <div>⊥ PERPENDICULARITY (SQUARENESS)</div> <div>// PARALLELISM</div> <div>○ ROUNDNESS (CIRCULARITY)</div> <div>⊘ CYLINDRICITY</div> <div>△ PROFILE OF ANY SURFACE</div> <div>⌒ PROFILE OF ANY LINE</div> <div>↗ RUNOUT</div> <div>⊕ TRUE POSITION</div> <div>◎ CONCENTRICITY</div> <div>≡ SYMMETRY</div> <div>ASME Y14.5M 1994</div> <div>METRIC DIMS. SHOWN IN [BRACKETS]</div>		DR BY: AL 11-16-2011		<div><div>REGAL</div>REGAL-BELOIT CORPORATION</div> <div>DESCRIPTION</div> <div>MODEL-CFHP-56FR</div> <div>OUTLINE</div> <div>SIZE C DWG NO B2858</div> <div>SCALE NONE SHEET 1</div>	
16387811		0601046				APPD: TZ 11-16-2011			
UL COMPONENT		CSA				THIRD ANGLE PROJECTION  EDS DATE 11-11-2011 FORMAT REV H			
FILE#	CCN#	FILE#	GUIDE#			CONFIDENTIAL: THIS DRAWING AND ITS INFORMATION ARE THE EXCLUSIVE AND CONFIDENTIAL PROPERTY OF REGAL-BELOIT CORPORATION AND ARE NOT TO BE DISCLOSED, DUPLICATED, DISTRIBUTED OR OTHERWISE USED WITHOUT THE WRITTEN CONSENT OF REGAL-BELOIT CORPORATION. -ALL RIGHTS RESERVED.			
PENDING	PENDING	PENDING	PENDING						
CUSTOMER	DISTRIBUTION								

4

3

2

1

4 3 2 1

REVISION: ECO D 0028432 REVISADO POR: R.ZHOU FECHA: 09-20-2012 APROBADO POR: B.SHEN FECHA: 09-20-2012

14.438
14.328
366.73
363.94

(12.40)
[(314.9)]

(5.05)
[(128.4)]

(6.11)
[(155.1)]

.944
.876
23.98
22.25

.411
.401
10.44
10.19

(.19)
[(4.8)]

(.50)
[(12.7)]

φ.6250
.6245
φ.15.874
15.861

φ.002

φ.004 C

φ.004 C

φ.006 C

-A-

(6.53)
[(165.9)]

(2.01)
[(51.0)]

90°

45°

(5.20)
[(132.1)]

φ.7.125
[φ180.98]

φ.440
.410
φ.11.18
10.41

4X HOLES

NAMEPLATE DATA

MODEL: 196262
CUST PN: B2858
HP: 1.5 SF: 1.5
ROT: CCWPE
RPM: 3450
TYPE: CX CODE: K
FORM: FRAME: Y 56 Y
VOLTS: 230/115
AMPS: —
MAX AMPS: —
SF AMPS: 10.5/21.0
PH: 1 HZ: 60
INS: F AMB: 50 C
DUTY: CONT
ENCLOSURE: ODP
THERMALLY PROTECTED

EXTERNAL CONNECTION DIAGRAM

175367-29

LINE

GRD GREEN (GROUND)

HIGH VOLTAGE SHOWN. ROTATE DIAL CCW TO 115 FOR LOW VOLTAGE.

USE COPPER CONDUCTORS ONLY. INSTALL MOTOR WITH VENTS DOWN.

ACCEPTABLE FOR FIELD WIRING

NOTES

PERFORMANCE CURVE

APPROVED SAMPLE

16387811 0601046

UL COMPONENT CSA

FILE# CCN# FILE# GUIDE#

PENDING PENDING PENDING PENDING

CUSTOMER DISTRIBUTION

CARACTERÍSTICAS DE GEOMETRIA Y SIMBOLOS

□ PLANICIDAD

— RECTITUD

∠ ANGULARIDAD

⊥ PERPENDICULARIDAD (A ESCUADRA)

∥ PARALELISMO

○ REDONDEZ (CIRCULARIDAD)

⊘ CILINDRICIDAD

△ PERFIL DE CUALQUIER SUPERFICIE

▽ PERFIL DE CUALQUIER LINEA

≠ VARIACION

⊕ POSICION REAL

⊙ CONCENTRICIDAD

= SIMETRIA

ASME Y14.5M 1994

A MENOS QUE SE ESPECIFIQUE DE OTRA MANERA, LAS TOLERANCIAS DE LAS DIMS. SON LAS SIGUIENTES:

X XX XXX XXXX

PULG ±.1 ±.02 ±.005 ±.0005

mm ±0.5 ±0.13 ±0.013

ANG. ±.50 GRADOS

ELIMINAR REBABAS Y ORILLAS FILOSAS DEL BORDE.

PULG .003-.015 mm 0.1-0.4

FILETEAR ESQUINA: PULG .020 mm 0.5

MAQUINAR SUPERFICIES

PULG 125 mm 3.2

DIMS METRICAS MOSTRADAS [PARENTESIS]

DIBUJADO POR: AL 11-16-2011

APROBADO POR: TZ 11-16-2011

TERCER ANGULO DE PROYECCION

FECHA EDS: 11-11-2011

REV. FORMATO: H

CONFIDENCIAL: ESTE DIBUJO Y SU INFORMACION SON PROPIEDAD DE USO EXCLUSIVO Y CONFIDENCIAL DE REGAL-BELOIT CORPORATION. Y NO DEBERAN SER REVELADOS, DUPLICADOS, DISTRIBUIDOS O USARSE DE OTRA MANERA SIN EL CONSENTIMIENTO ESCRITO DE REGAL-BELOIT CORPORATION. -TODOS LOS DERECHOS RESERVADOS.

REGAL REGAL-BELOIT CORPORATION

DESCRIPCION: MODEL-CFHP-56FR OUTLINE

TAMAÑO: C NUMERO DE DIBUJO: B2858

ESCALA: NONE HOJA: 1

4 3 2 1

4

3

2

1

D

C

B

A

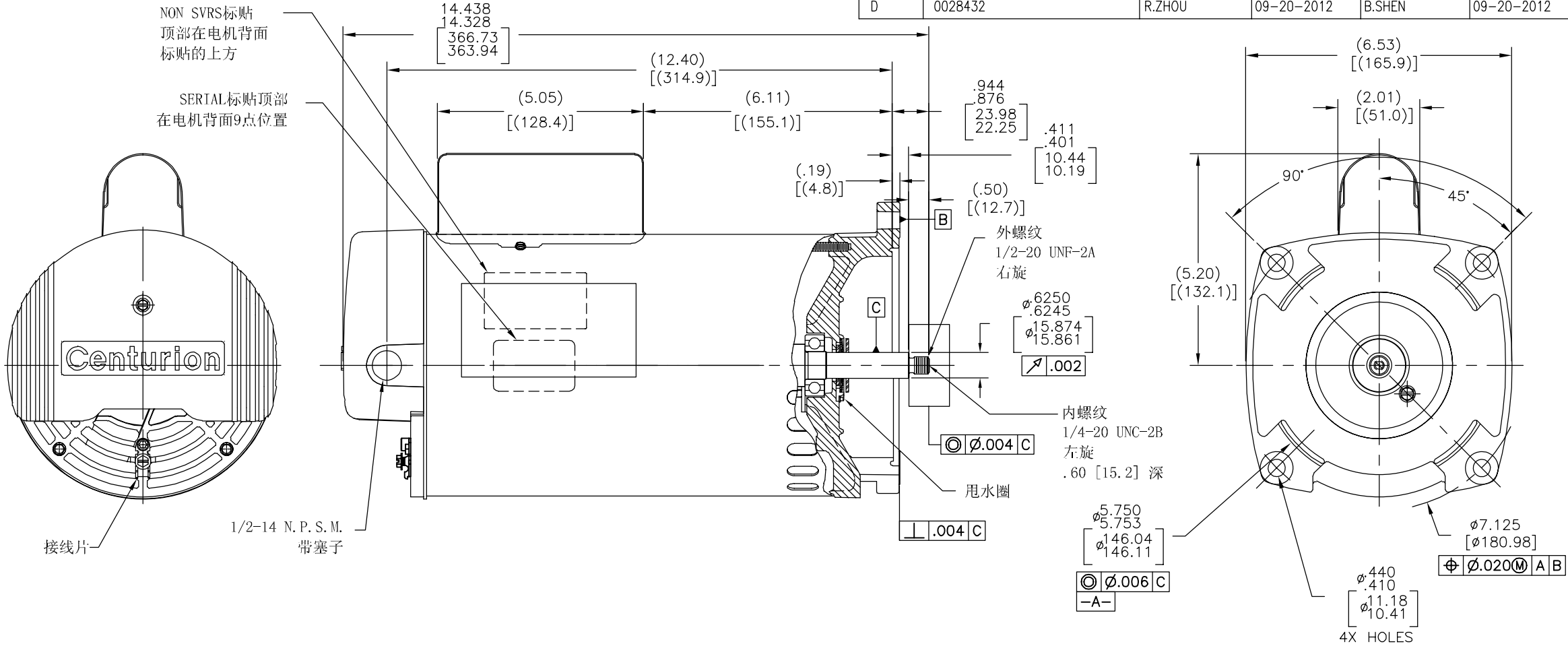
D

C

B

A

版本	ECO	编制	日期	批准	日期
D	0028432	R.ZHOU	09-20-2012	B.SHEN	09-20-2012



NAMEPLATE DATA	EXTERNAL CONNECTION DIAGRAM	NOTES
MODEL: 196262 CUST PN: B2858 HP: 1.5 SF: 1.5 ROT: CCWPE RPM: 3450 TYPE: CX CODE: K FORM: FRAME: Y 56 Y VOLTS: 230/115 AMPS: - MAX AMPS: - SF AMPS: 10.5/21.0 PH: 1 HZ: 60 INS: F AMB: 50 C DUTY: CONT ENCLOSURE: ODP THERMALLY PROTECTED	<p>175367-29</p> <p>LINE</p> <p>GRD</p> <p>GREEN (GROUND)</p> <p>HIGH VOLTAGE SHOWN. ROTATE DIAL CCW TO 115 FOR LOW VOLTAGE.</p> <p>USE COPPER CONDUCTORS ONLY. INSTALL MOTOR WITH VENTS DOWN. ACCEPTABLE FOR FIELD WIRING</p>	1. 量规测量方法如图所示，螺纹外径与中心的同心度为.004[.10]. 2. 轴向窜动不超过.010[.25]. 3. 表面黑色漆. 4. 参考型号: B858 5. 连接是为了230V双电压电机，从连接图表上看出可以转换成115V.

PERFORMANCE CURVE	APPROVED SAMPLE	形位公差 □ 平面度 — 直线度 ∠ 倾斜度 ⊥ 垂直度 // 平行度 ○ 圆度 ⊙ 圆柱度 ⌒ 面轮廓度 — 线轮廓度 ⌒ 圆跳动 ⊕ 位置度 ⊙ 同轴度 ≡ 对称度	除另有注明 尺寸公差如下: 英寸 X XX XXX XXXX ±.1 ±.02 ±.005 ±.0005 毫米 ±0.5 ±0.13 ±0.013 角度 ±.50 度 清理毛刺和尖棱 英寸 .003-.015 毫米 0.1-0.4 内圆角 英寸 .020 毫米 0.5 表面粗糙度 英制 125 米制 3.2	绘图: AL 11-16-2011 批准: TZ 11-16-2011 第三角投影 图纸格式发布日期 11-11-2011 图纸格式版本 H 机密: 本图纸及相关信息所有权归REGAL-BELOIT CORPORATION。 未经REGAL-BELOIT CORPORATION书面授权，不得泄露、 复制、传播或作其他用途。--版权所有	名称 MODEL-CFHP-56FR OUTLINE 图幅 C 图号 B2858 比例 NONE 页号 1
16387811	0601046	ASME Y14.5M 1994	米制尺寸显示在[]		

4

3

2

1