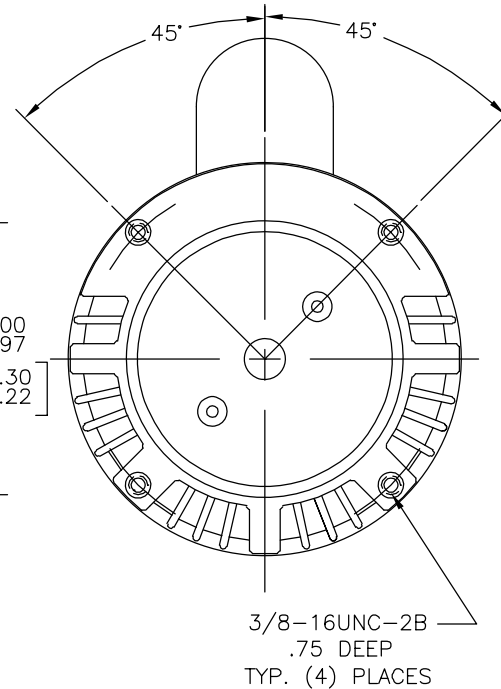
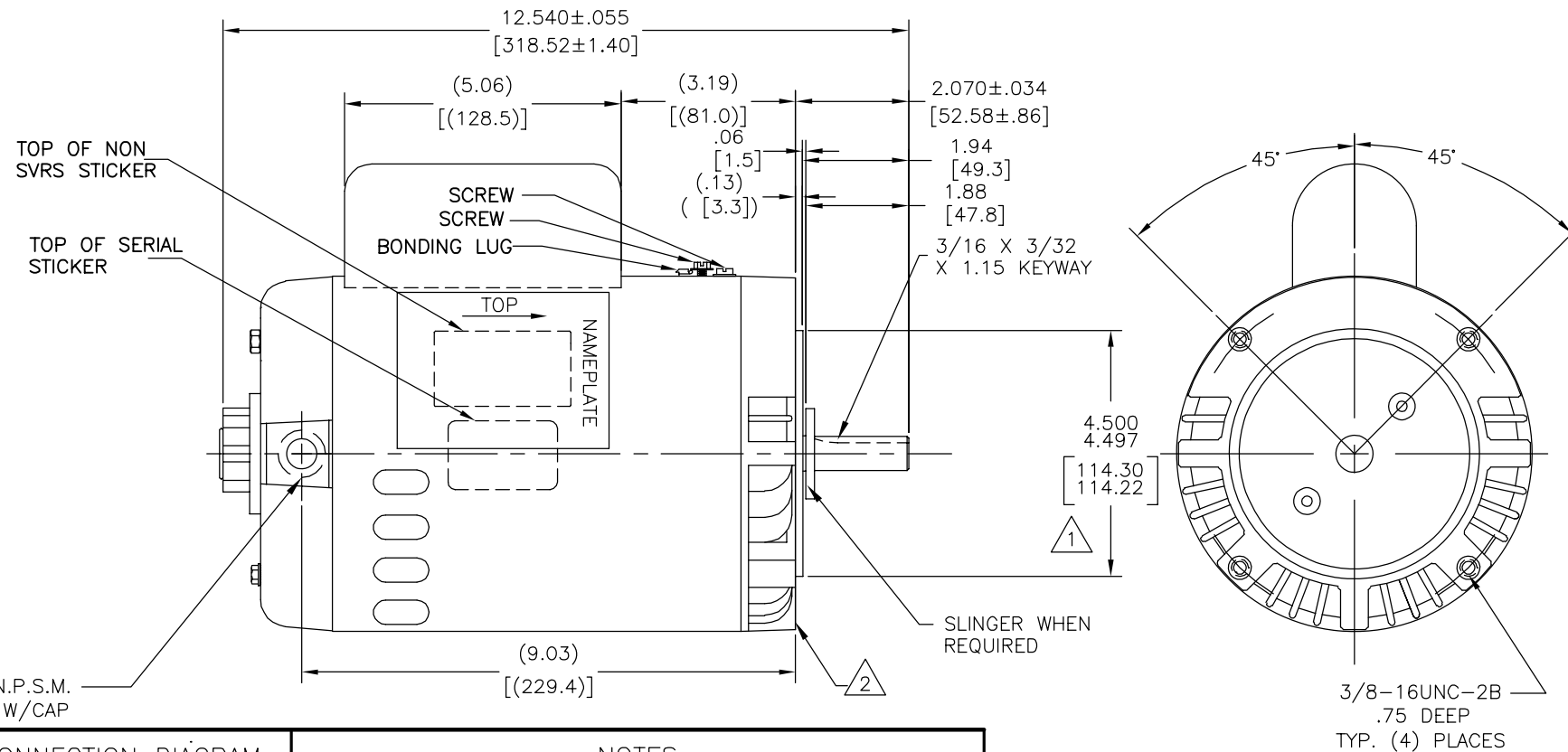
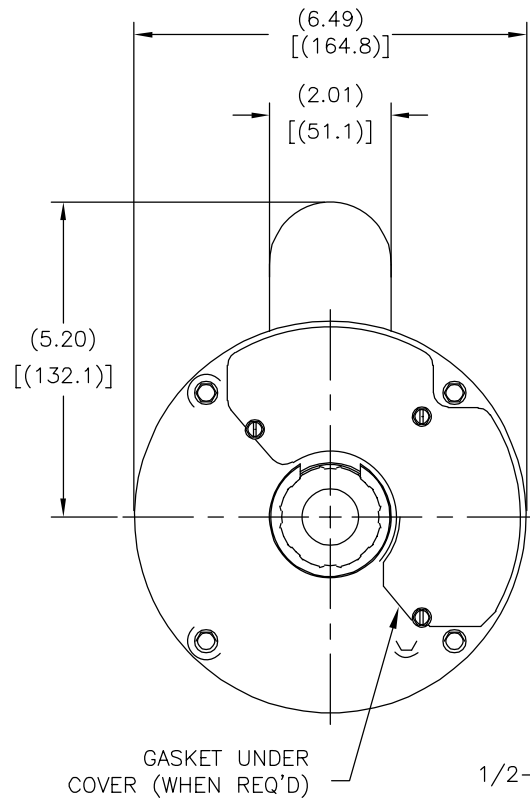




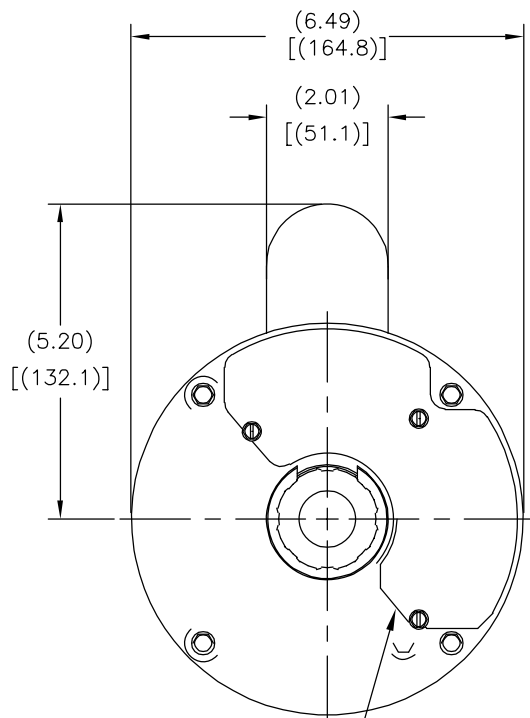
REV	ECO	REV BY	DATE	APPD	DATE
E	0025534	I.MATA	04-24-2012	R.RASCON	04-24-2012



NAMEPLATE DATA	EXTERNAL CONNECTION DIAGRAM	NOTES
MODEL: 177061 CUST PN: B976 HP: 1.5-2.0 SF: 1.30 ROT: CCWPE RPM: 3450/1725 TYPE: CXPM CODE: G FORM: FRAME: X 56 C VOLTS: 230 AMPS: MAX AMPS: SF AMPS: 8.9/3.1 PH: 1 HZ: 60 INS: B AMB: 40°C DUTY: CONT ENCLOSURE: ODP THERMALLY PROTECTED		<p>△ PILOT DIAMETER IS CONCENTRIC WITH SHAFT CENTERLINE WITHIN .004 T.I.R.</p> <p>△ FACE OF MOUNTING FLANGE IS PERPENDICULAR TO SHAFT CENTERLINE WITHIN .004 T.I.R.</p> <p>3. SHAFT RUNOUT NOT TO EXCEED .002 T.I.R.</p> <p>4. FOR THREADED SHAFT EXT. MATING PARTS SHOULD BE RELIEVED ON THREAD TO CLEAR FILLET.</p>

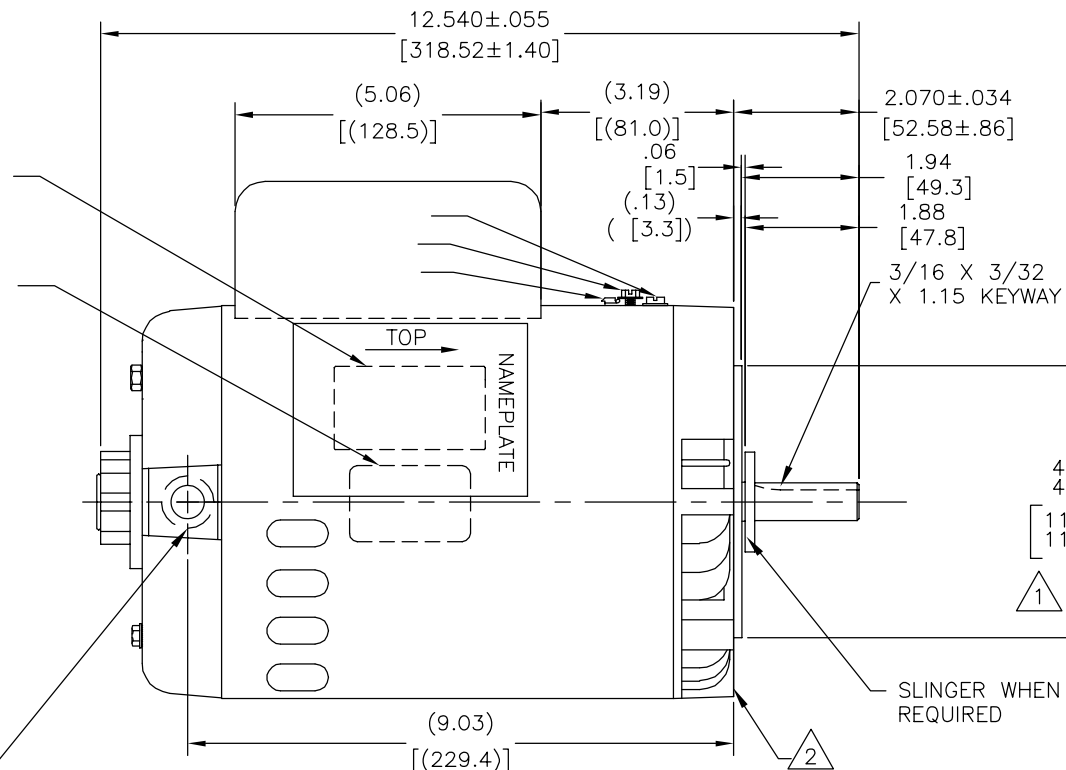
PERFORMANCE CURVE		APPROVED SAMPLE		<div>GEOMETRIC CHARACTERISTICS &amp; SYMBOLS</div> <div>∇ FLATNESS</div> <div>— STRAIGHTNESS</div> <div>∠ ANGULARITY</div> <div>⊥ PERPENDICULARITY (SQUARENESS)</div> <div>∥ PARALLELISM</div> <div>○ ROUNDNESS (CIRCULARITY)</div> <div>⊘ CYLINDRICITY</div> <div>△ PROFILE OF ANY SURFACE</div> <div>⌒ PROFILE OF ANY LINE</div> <div>↗ RUNOUT</div> <div>⊕ TRUE POSITION</div> <div>◎ CONCENTRICITY</div> <div>≡ SYMMETRY</div> <div>ASME Y14.5M 1994</div>		<div>DR BY: TOM ZHZO</div> <div>07-10-2006</div>		<div> REGAL-BELOIT CORPORATION</div>	
16331714						<div>APPD: TDT</div> <div>07-11-2006</div>			
UL COMPONENT		CSA				<div>THIRD ANGLE PROJECTION</div> <div></div> <div>EDS DATE 11-11-2011</div> <div>FORMAT REV G</div>			
FILE#	CCN#	FILE#	GUIDE#			CONFIDENTIAL: THIS DRAWING AND ITS INFORMATION ARE THE EXCLUSIVE AND CONFIDENTIAL PROPERTY OF REGAL-BELOIT CORPORATION AND ARE NOT TO BE DISCLOSED, DUPLICATED, DISTRIBUTED OR OTHERWISE USED WITHOUT THE WRITTEN CONSENT OF REGAL-BELOIT CORPORATION. -ALL RIGHTS RESERVED.			
PENDING	PENDING	LR4642	4211-01			DESCRIPTION		OUTLINE	
CUSTOMER						SIZE	C	DWG NO	B976
						SCALE	NONE		SHEET 1

REVISION:	ECO	REVISADO POR:	FECHA:	APROBADO POR:	FECHA:
E	0025534	I.MATA	04-24-2012	R.RASCON	04-24-2012

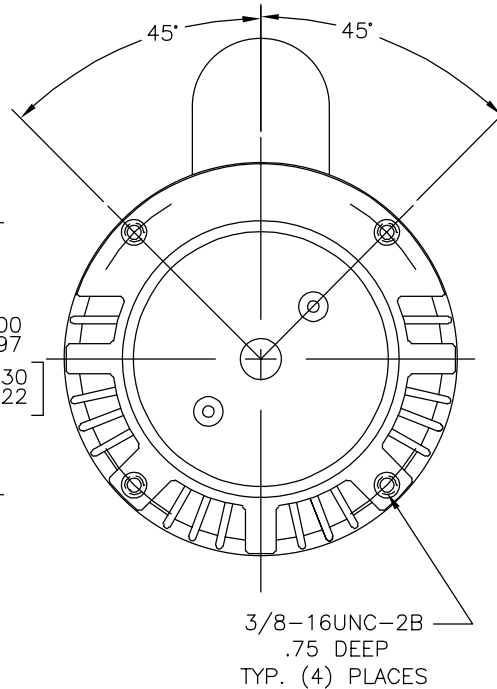


GASKET UNDER  
COVER (WHEN REQ'D)

1/2-14 N.P.S.M.  
W/CAP



SLINGER WHEN  
REQUIRED

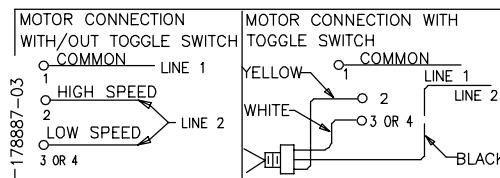


## NAMEPLATE DATA

## EXTERNAL CONNECTION DIAGRAM

## NOTES

MODEL: 177061  
CUST PN: B976  
HP: 1.5-2.0 SF: 1.30  
ROT: CCWPE  
RPM: 3450/1725  
TYPE: CXPM CODE: G  
FORM: FRAME: X 56 C  
VOLTS: 230  
AMPS:  
MAX AMPS:  
SF AMPS: 8.9/3.1  
PH: 1 HZ: 60  
INS: B AMB: 40°C  
DUTY: CONT  
ENCLOSURE: ODP  
THERMALLY PROTECTED



- △ PILOT DIAMETER IS CONCENTRIC WITH SHAFT CENTERLINE WITHIN .004 T.I.R.
- △ FACE OF MOUNTING FLANGE IS PERPENDICULAR TO SHAFT CENTERLINE WITHIN .004 T.I.R.
3. SHAFT RUNOUT NOT TO EXCEED .002 T.I.R.
4. FOR THREADED SHAFT EXT. MATING PARTS SHOULD BE RELIEVED ON THREAD TO CLEAR FILLET.

PERFORMANCE  
CURVEAPPROVED  
SAMPLE

## CARACTERISTICAS DE GEOMETRIA Y SIMBOLOS

## A MENOS QUE SE ESPECIFIQUE DE

## DIBUJADO POR:

TOM ZHZO

07-10-2006

## APROBADO POR:

TDT

07-11-2006

## TERCER ANGULO

FECHA EDS: 11-11-2011  
REV. FORMATO: G

REGAL-BELOIT CORPORATION

## DESCRIPCION:

OUTLINE

## TAMAÑO:

C

## NUMERO DE DIBUJO:

B976

## ESCALA:

NONE

## HOJA:

1

## 16331714

## CSA

## UL COMPONENT

## FILE#

## CCN#

## FILE#

## GUIDE#

## PENDING

## PENDING

## LR4642

## 4211-01

## CUSTOMER

## ASME Y14.5M 1994

## DIMS METRICAS MOSTRADAS [PARENTESIS]

## PULG .003-.015 mm 0.1-0.4

## FILETEAR ESQUINA: PULG .020 mm 0.5

## MAQUINAR SUPERFICIES

## PULG 125 mm 3.2

