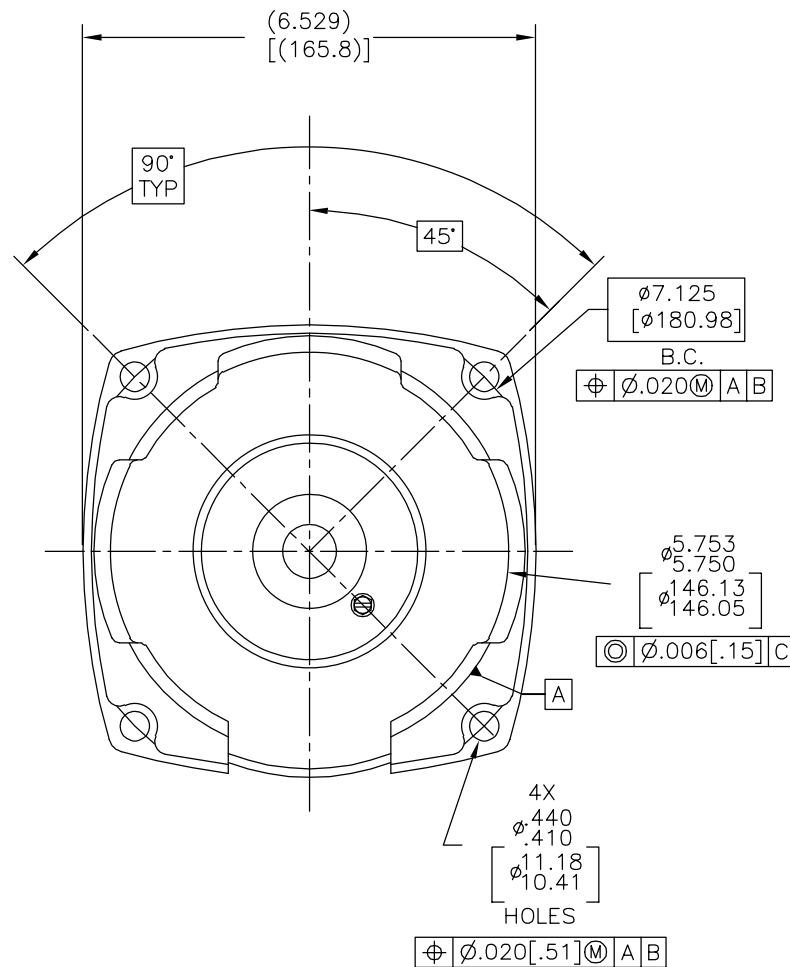
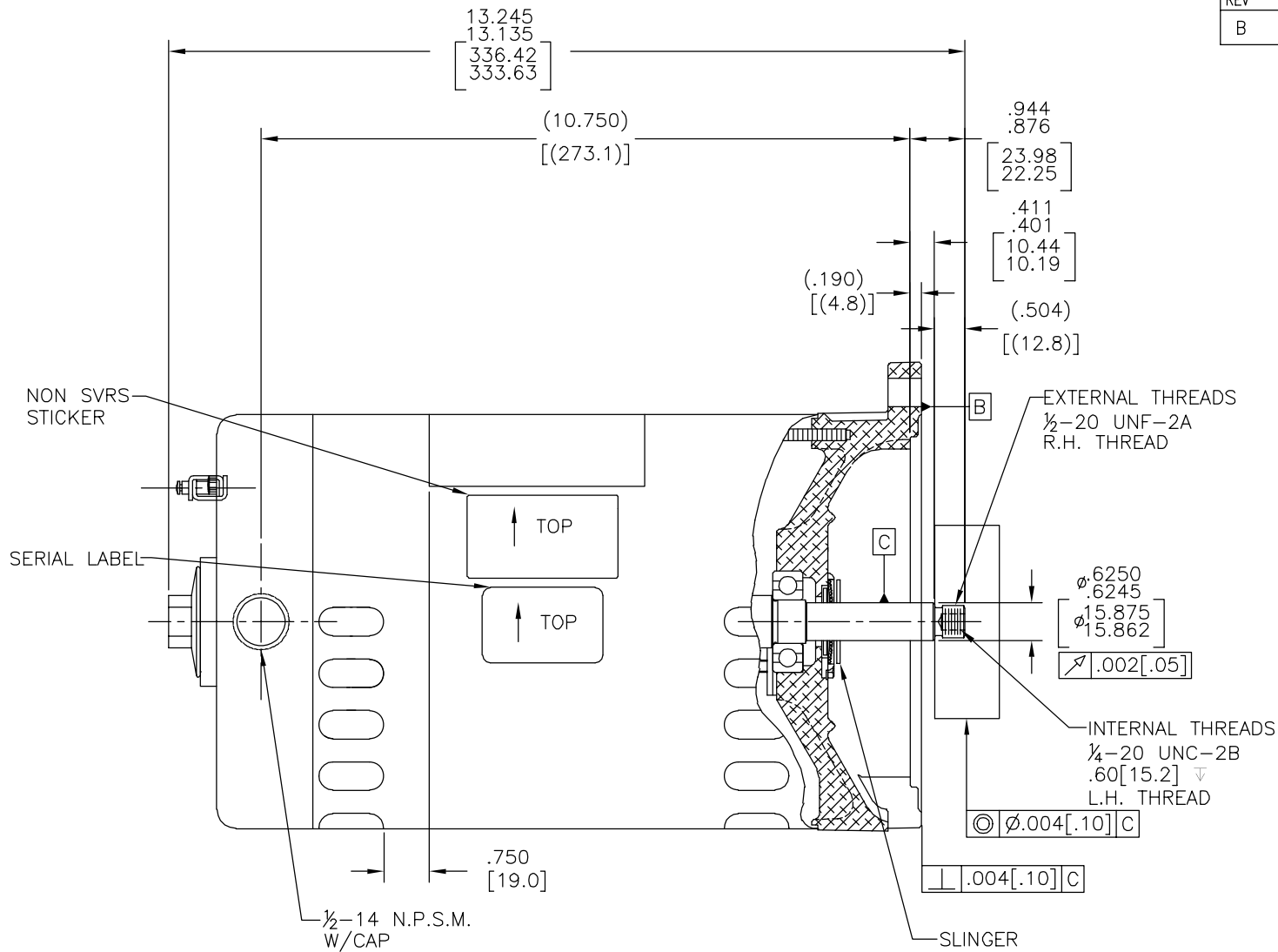


REV	ECO	REV BY	DATE	APPD	DATE
B	0025551	A. ARREOLA	04-30-2012	D. BALDERRAMA	04-30-2012

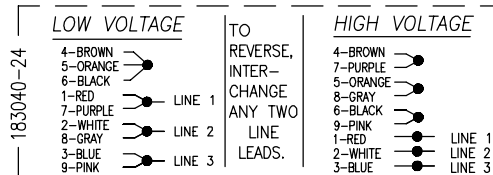


## NAMEPLATE DATA

## EXTERNAL CONNECTION DIAGRAM

## NOTES

MODEL: 165365  
CUST PN: H635  
HP: 1.0 SF: 1.65  
ROT: RCC  
RPM: 3450  
TYPE: SC CODE: M  
FORM: - FRAME: R 56 Y  
VOLTS: 208-230/460  
AMPS: SF-5.0-4.6/2.3  
MAX AMPS: -  
SF AMPS: -  
PH: 3 HZ: 60  
INS: B AMB: 50°C  
DUTY: CONT  
ENCLOSURE: ODP  
THERMALLY PROTECTED



- FOR THREADED SHAFT EXT. MATING PARTS SHOULD BE RELIEVED ONE THREAD TO CLEAR FILLET.
- END PLAY NOT TO EXCEED .010 [.25] MEASURED WITH NO THRUST.
- ALL DIMENSIONS SHOWN IN PARENTHESIS ARE REFERENCE DIMENSIONS.
- FINISH PAINT TO BE BLACK.

## PERFORMANCE CURVE

## APPROVED SAMPLE

## GEOMETRIC CHARACTERISTICS &amp; SYMBOLS

REGAL-BELOIT CORPORATION (RBC) PROVIDES TECHNICAL ASSISTANCE TO OUR CUSTOMERS IN SEVERAL AREAS. SINCE RBC DOES NOT RECEIVE ALL DATA CONCERNING THE USE AND APPLICATION OF THE MOTOR, THE SUITABILITY OF THE MOTOR FOR THE APPLICATION MUST BE DETERMINED BY THE CUSTOMER.

## DR BY:

CHERRY. Z

11-15-2010

## APPD:

BAOCHENG. S

11-15-2010

## THIRD ANGLE PROJECTION

EDS DATE 11-11-2011  
FORMAT REV G

REGAL-BELOIT CORPORATION

## DESCRIPTION

MODEL-PFHP-56FR  
OUTLINE

## SIZE

C

## DWG NO

H635

## SCALE

NONE

## SHEET

1

## FILE#

## CCN#

## FILE#

## GUIDE#

E44549

PRGY2

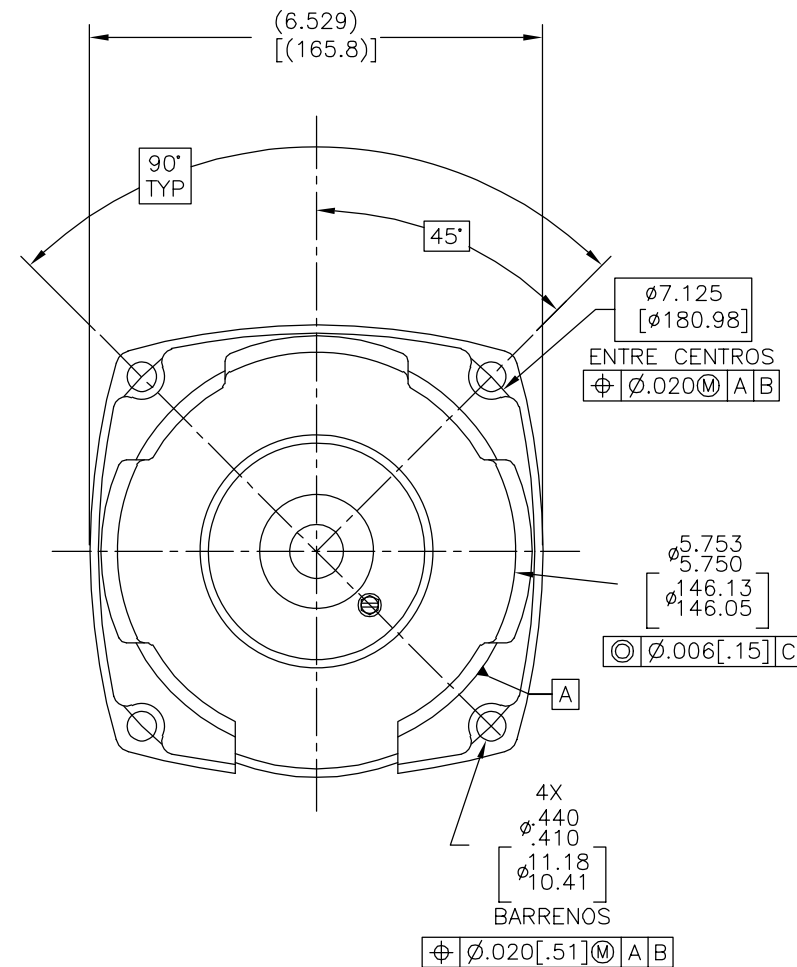
LR4642

4211-01


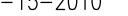
## CUSTOMER

## DISTRIBUTION

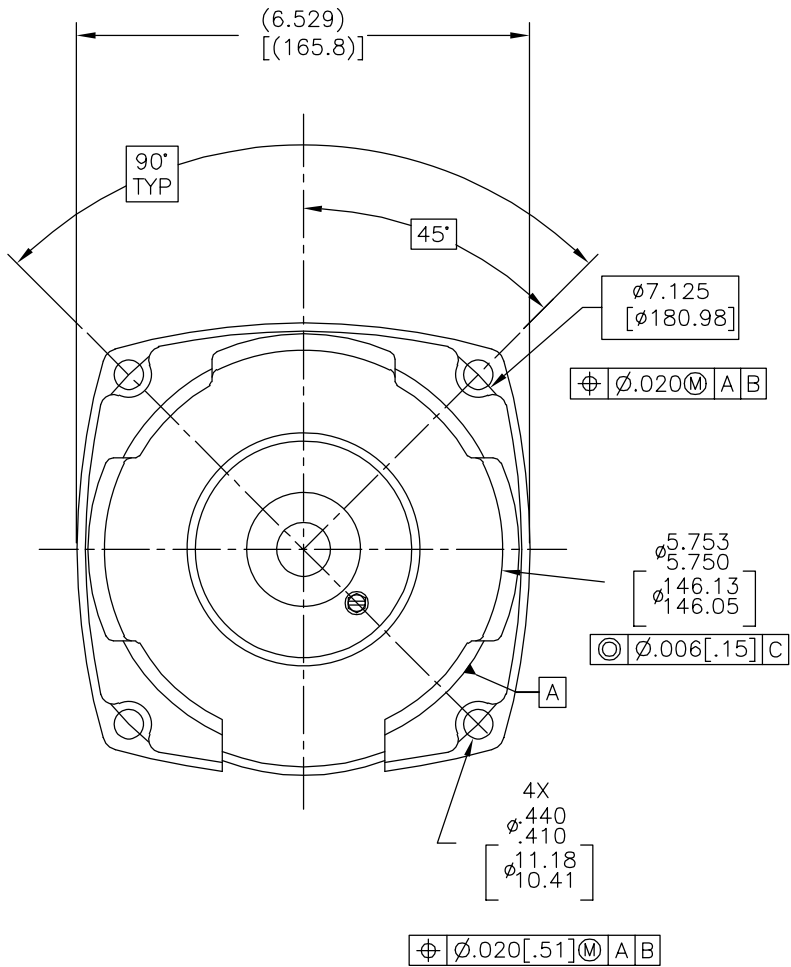
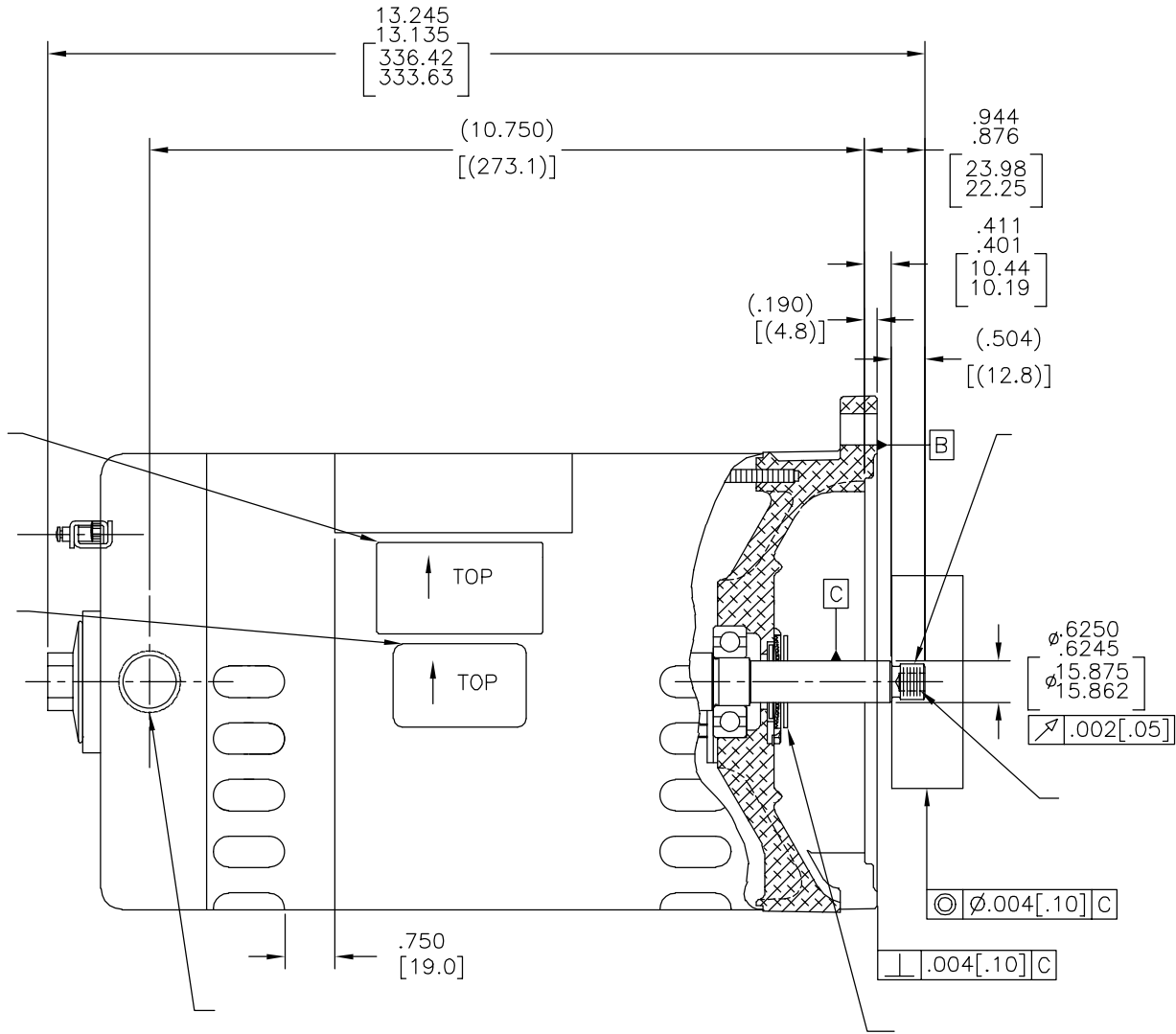
ASME Y14.5M 1994



NAMEPLATE DATA	EXTERNAL CONNECTION DIAGRAM	NOTES
MODEL: 165365 CUST PN: H635 HP: 1.0                      SF: 1.65 ROT: RCC RPM: 3450 TYPE: SC                      CODE: M FORM: —                      FRAME: R 56 Y VOLTS: 208–230/460 AMPS: SF–5.0–4.6/2.3 MAX AMPS: — SF AMPS: — PH: 3                      HZ: 60 INS: B                      AMB: 50°C DUTY: CONT ENCLOSURE: ODP THERMALLY PROTECTED	<p>183040-24</p> <p><u>LOW VOLTAGE</u></p> <p>4-BROWN 5-ORANGE 6-BLACK 1-RED 7-PURPLE 2-WHITE 8-GRAY 3-BLUE 9-PINK</p> <p>TO REVERSE, INTER-CHANGE ANY TWO LINE LEADS.</p> <p><u>HIGH VOLTAGE</u></p> <p>4-BROWN 7-PURPLE 5-ORANGE 8-GRAY 6-BLACK 9-PINK 1-RED 2-WHITE 3-BLUE</p> <p>LINE 1 LINE 2 LINE 3</p>	1. EN FLECHA CON EXTENSION ROSCADA LAS PARTES QUE ENCAJAN DEBEN ESTAR A UN HILO DE LA ROSCA PARA DESPEJAR EL FILO.  2. EL JUEGO AXIAL NO DEBE EXCEDER .010[.25]. MEDIDO SIN EMPUJE.  3. TODAS LAS DIMENSIONES QUE SE MUESTRAN ENTRE PARENTESIS SON DE REFERENCIA.  4. LA PINTURA DE ACABADO FINAL ES DE COLOR NEGRO.

PERFORMANCE CURVE		APPROVED SAMPLE		<div>CARACTERISTICAS DE GEOMETRIA Y SIMBOLOS</div> <div>∠ PLANICIDAD</div> <div>— RECTITUD</div> <div>∠ ANGULARIDAD</div> <div>⊥ PERPENDICULARIDAD (A ESCUADRA)</div> <div>// PARALELISMO</div> <div>○ REDONDEZ (CIRCULARIDAD)</div> <div>⌀ CILINDRICIDAD</div> <div>△ PERFIL DE CUALQUIER SUPERFICIE</div> <div>∩ PERFIL DE CUALQUIER LINEA</div> <div>† VARIACION</div> <div>⊕ POSICION REAL</div> <div>⊙ CONCENTRICIDAD</div> <div>= SIMETRIA</div> <div>ASME Y14.5M 1994</div> <div>REGAL-BELOIT CORPORATION (RBC)</div> <div>PROVEE ASISTENCIA TECNICA A</div> <div>NUESTROS CLIENTES EN VARIAS AREAS.</div> <div>DESDE QUE RBC NO RECIBE TODOS</div> <div>LOS DATOS EN RELACION AL USO Y A</div> <div>LA APLICACION DEL MOTOR, LA</div> <div>APLICACION ADECUADA DEL MOTOR</div> <div>DEBE SER DETERMINADA POR EL</div> <div>CLIENTE.</div> <div>DIMENSIONES SIN TOLERANCIA SON</div> <div>DE REFERENCIA SOLAMENTE</div>		<div>DIBUJADO POR:</div> <div>CHERRY. Z</div> <div>11-15-2010</div>		<div></div> <div>DESCRIPCION:</div> <div>MODEL-PFHP-56FR</div> <div>OUTLINE</div>					
15567722		—				<div>APROBADO POR:</div> <div>BAOCHENG. S</div> <div>11-15-2010</div>							
UL COMPONENT		CSA				<div>TERCER ANGULO DE PROYECCION</div> <div></div> <div>FECHA EDS: 11-11-2011</div> <div>REV. FORMATO: G</div>							
FILE#	CCN#	FILE#	GUIDE#							CONFIDENCIAL: ESTE DIBUJO Y SU INFORMACION SON PROPIEDAD DE USO EXCLUSIVO Y CONFIDENCIAL DE REGAL-BELOIT CORPORATION. Y NO DEBERAN SER REVELADOS, Duplicados, DISTRIBUIDOS O USARSE DE OTRA MANERA SIN EL CONSENTIMIENTO ESCRITO DE REGAL-BELOIT CORPORATION. -TODOS LOS DERECHOS RESERVADOS.			
E44549	PRGY2	LR4642	4211-01										
CUSTOMER	DISTRIBUTION					<div>TAMAÑO:</div> <div>C</div>		<div>NUMERO DE DIBUJO:</div> <div>H635</div>		<div>ESCALA:</div> <div>NONE</div>		<div>HOJA:</div> <div>1</div>	

版本	ECO	编制	日期	批准	日期
B	0025551	A. ARREOLA	04-30-2012	D. BALDERRAMA	04-30-2012



NAMEPLATE DATA	EXTERNAL CONNECTION DIAGRAM	NOTES
MODEL: 165365 CUST PN: H635 HP: 1.0 SF: 1.65 ROT: RCC RPM: 3450 TYPE: SC CODE: M FORM: - FRAME: R 56 Y VOLTS: 208-230/460 AMPS: SF-5.0-4.6/2.3 MAX AMPS: - SF AMPS: - PH: 3 HZ: 60 INS: B AMB: 50°C DUTY: CONT ENCLOSURE: ODP THERMALLY PROTECTED	<div>183040-24</div> <div>LOW VOLTAGE</div> <div>4-BROWN 5-ORANGE 6-BLACK 1-RED 7-PURPLE 2-WHITE 8-GRAY 9-PINK</div> <div>TO REVERSE, INTER-CHANGE ANY TWO LINE LEADS.</div> <div>HIGH VOLTAGE</div> <div>4-BROWN 7-PURPLE 5-ORANGE 8-GRAY 6-BLACK 9-PINK 1-RED 2-WHITE 3-BLUE</div> <div>LINE 1 LINE 2 LINE 3</div>	

PERFORMANCE CURVE		APPROVED SAMPLE		<div>形位公差 □ 平面度 — 直线度 ∠ 倾斜度 ⊥ 垂直度 // 平行度 ○ 圆度 ⊙ 圆柱度 ⌒ 面轮廓度 ⌒ 线轮廓度 ↗ 圆跳动 ⊕ 位置度 ◎ 同轴度 ≡ 对称度</div>	REGAL-BELOIT CORPORATION (RBC) 在个别领域为客户提供技术支持。鉴于RBC未收到任何涉及电机使用和应用环境的数据，电机的适用性由客户自己决定。	绘图: CHERRY. Z	11-15-2010	<div> REGAL-BELOIT CORPORATION</div>	名称		
15567722		—				批准: BAOCHENG. S	11-15-2010		MODEL-PFHP-56FR		
UL COMPONENT		CSA				第三角投影 			图纸格式发布日期 11-11-2011	OUTLINE	
FILE#	CCN#	FILE#	GUIDE#						图纸格式版本 G	图幅 C 图号 H635	
E44549	PRGY2	LR4642	4211-01						机密: 本图纸及相关信息所有权归REGAL-BELOIT CORPORATION。未经REGAL-BELOIT CORPORATION书面授权, 不得泄露、复制、传播或作其他用途。一版权所有		比例 NONE 页号 1
CUSTOMER		DISTRIBUTION			未注公差尺寸仅供参考。						
				ASME Y14.5M 1994							

ASME Y14.5M 1994