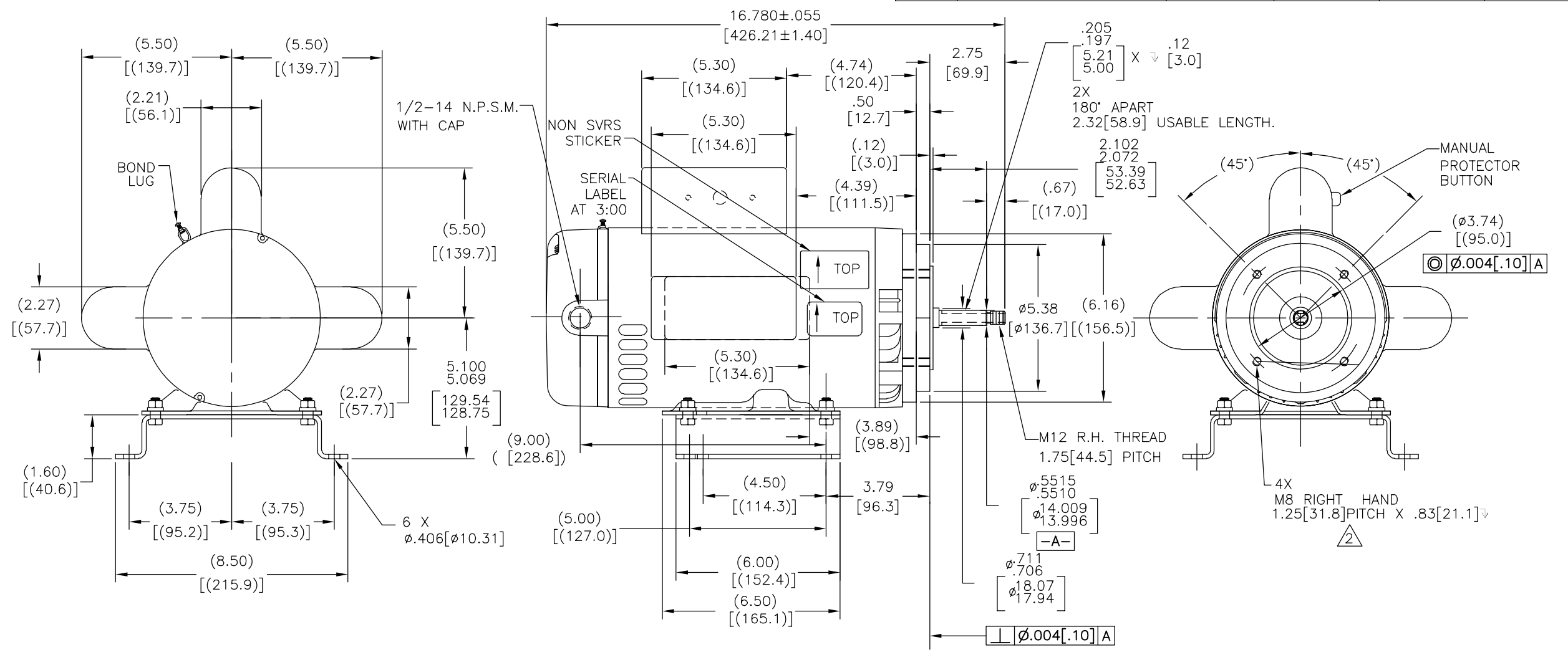


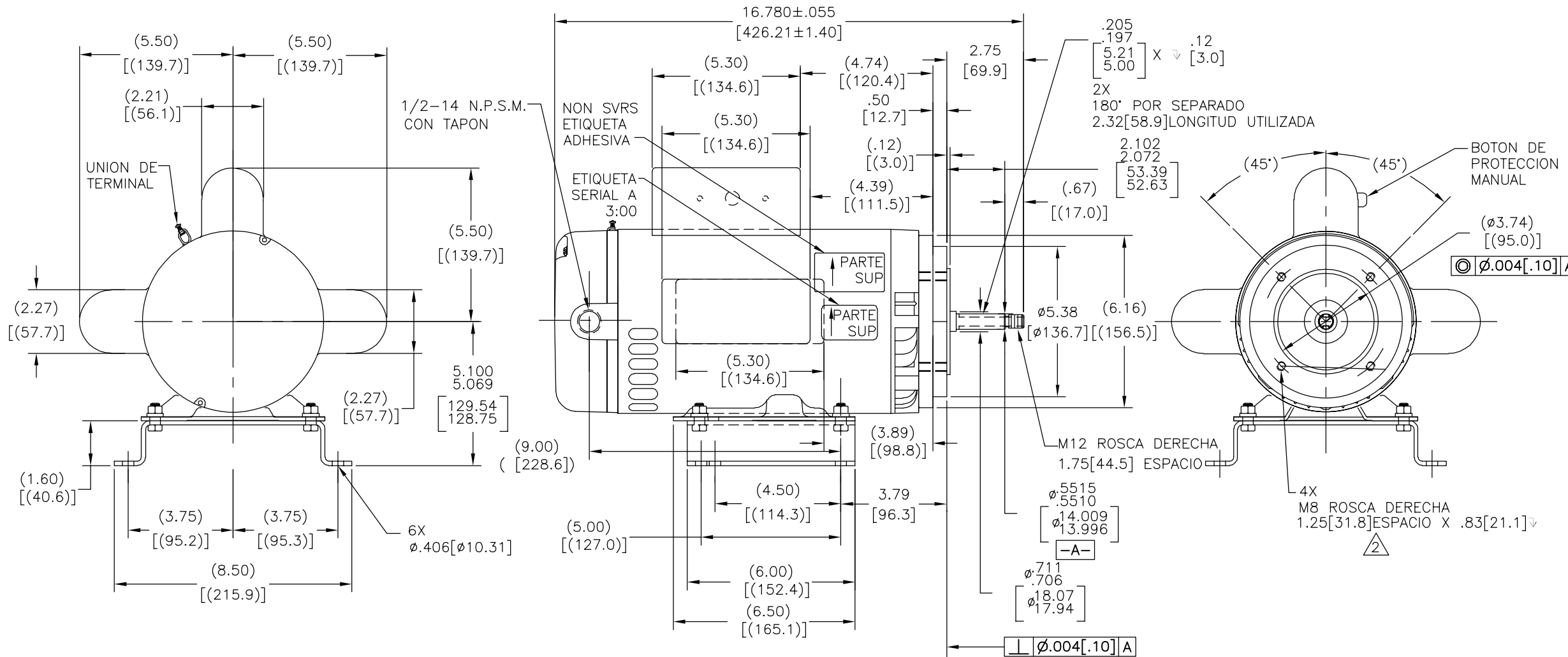
REV	ECO	REV BY	DATE	APPD	DATE
E	0036644	J.AGUILERA	10-23-2013	D.BALDERRAMA	10-23-2013



NAMEPLATE DATA	EXTERNAL CONNECTION DIAGRAM	NOTES
MODEL: 182145 CUST PN: B116 HP: 4.0 SF: 1.25 ROT: CCWPE RPM: 3450 TYPE: CX CODE: H FORM: - FRAME: Y 56 Y VOLTS: 208-230 AMPS: SF 21.0-19.4 MAX AMPS: - SF AMPS: - PH: 1 HZ: 60 INS: B AMB: 40 DUTY: CONT ENCLOSURE: ODP THERMALLY PROTECTED: KM	<p>230 VOLTAGE - SINGLE SPEED</p>	1. SHAFT RUNOUT NOT TO EXCEED .002[.05] T.I.R. 2. \triangle FOR RIGID BASE ONLY; THE 2 BOTTOM HOLES IN THE MOUNTING FLANGE ARE PARALLEL FROM THE BOTTOM OF THE FEET WITH .030[.76] 3. FOR THREADED SHAFT EXT. MATING PARTS SHOULD BE RELIEVED ONE THREAD TO CLEAR FILLET 4. FOR THREADED SHAFT EXT. ECCENTRICITY OF THREADED PORTION OF SHAFT IS HELD WITHIN .004[.10] TOTAL GAGE READING WITH THE INDICATOR ON O.D. OF GROUND RING GAGE AS SHOWN. THE GAGE BEING STATIONARY WITH RESPECT TO THE ROTOR 5. END PLAY NOT TO EXCEED .010[.25] MEASURED WITH NO THRUST.

PERFORMANCE CURVE 16365911	APPROVED SAMPLE -	GEOMETRIC CHARACTERISTICS & SYMBOLS □ FLATNESS - STRAIGHTNESS ∠ ANGULARITY ⊥ PERPENDICULARITY (SQUARENESS) // PARALLELISM ○ ROUNDNESS (CIRCULARITY) ∅ CYLINDRICITY △ PROFILE OF ANY SURFACE ∩ PROFILE OF ANY LINE † RUNOUT ⊕ TRUE POSITION ⊙ CONCENTRICITY = SYMMETRY	UNLESS OTHERWISE SPECIFIED DIM. TOLERANCES ARE AS FOLLOWS: INCH X XX XXX XXXX ±.1 ±.02 ±.005 ±.0005 mm ±0.5 ±0.13 ±0.013 ANG. ±.50 DEG REMOVE BURRS & BREAK SHARP EDGES: INCH .003-.015 mm 0.1-0.4 CORNER FILLETS TO: INCH .020 mm 0.5 MACHINE SURFACES: INCH 125 mm 3.2	DR BY: KHR 08-30-2005 APPD: JMW 02-28-2006 THIRD ANGLE PROJECTION CONFIDENTIAL: THIS DRAWING AND ITS INFORMATION ARE THE EXCLUSIVE AND CONFIDENTIAL PROPERTY OF REGAL-BELOIT CORPORATION AND ARE NOT TO BE DISCLOSED, DUPLICATED, DISTRIBUTED OR OTHERWISE USED WITHOUT THE WRITTEN CONSENT OF REGAL-BELOIT CORPORATION. -ALL RIGHTS RESERVED.	REGAL REGAL-BELOIT CORPORATION DESCRIPTION: MODEL-CFHP-56FR OUTLINE SIZE: C DWG NO: B116 SCALE: NONE SHEET: 1
UL COMPONENT: CSA FILE# CCN# FILE# GUIDE# E14663 XEWR2 LR4642 4211-01 CUSTOMER: DISTRIBUTION	ASME Y14.5M 1994 METRIC DIMS. SHOWN IN [BRACKETS]				

REVISION:	ECO	REVISADO POR:	FECHA:	APROBADO POR:	FECHA:
E	0036644	J.AGUILERA	10-23-2013	D.BALDERRAMA	10-23-2013



NAMEPLATE DATA	EXTERNAL CONNECTION DIAGRAM	NOTES
MODEL: 182145 CUST PN: B116 HP: 4.0 SF: 1.25 ROT: CCWPE RPM: 3450 TYPE: CX CODE: H FORM: - FRAME: Y 56 Y VOLTS: 208-230 AMPS: SF 21.0-19.4 MAX AMPS: - SF AMPS: - PH: 1 HZ: 60 INS: B AMB: 40 DUTY: CONT ENCLOSURE: ODP THERMALLY PROTECTED: KM	<p>230 VOLTAGE - SINGLE SPEED</p>	<ol style="list-style-type: none"> LA OSILACION DE LA FLECHA NO DEBE EXCEDER .002[.05] L.T.I SOLO PARA BASE RIGIDA: LOS ORIFICIOS DE MONTAJE FONDO SON PARALELOS AL CENTRO DE LINEA DE LA FLECHA CON RESPECTO A .004[.10] L.T.I. PARA EXTENSION ROSCADA DE FLECHA, LAS PARTES COINCIDENTES DEBEN ESTAR SEPARADAS UN HILO PARA ACLARAR EL FILETE. PARA ROSCADO EXTERNO DE LA FLECHA, LA EXCENTRICIDAD DE LA PORCION ROSCADA ES MANTENIDA DENTRO DE .004[.10] LA LECTURA CALIBRADA CON EL INDICADOR DE DIAMETRO EXT. DEL ANILLO A TIERRA COMO SE MUESTRA, EL CALIBRADOR DEBE PERMANECER ESTATICO RESPECTO AL ROTOR. EL JUEGO AXIAL NO DEBE EXCEDER .010[.25] MEDIDA SIN EMPUJE.

PERFORMANCE CURVE	APPROVED SAMPLE	CARACTERISTICAS DE GEOMETRIA Y SIMBOLOS □ PLANICIDAD - RECTITUD ∠ ANGULARIDAD ⊥ PERPENDICULARIDAD (A ESQUADRA) // PARALELISMO ○ REDONDEZ (CIRCULARIDAD) ∅ CILINDRICIDAD △ PERFIL DE CUALQUIER SUPERFICIE ∩ PERFIL DE CUALQUIER LINEA † VARIACION ⊕ POSICION REAL ⊙ CONCENTRICIDAD = SIMETRIA	DIBUJADO POR: KHR	08-30-2005	REGAL REGAL-BELOIT CORPORATION DESCRIPCION: MODEL-CFHP-56FR OUTLINE	
16365911	-		A MENOS QUE SE ESPECIFIQUE DE OTRA MANERA, LAS TOLERANCIAS DE LAS DIMS; SON LAS SIGUIENTES: PULG ±.1 ±.02 ±.005 ±.0005 mm ±0.5 ±0.13 ±0.013 ANG. ±.50 GRADOS ELIMINAR REBABAS Y ORILLAS FILOSAS DEL BORDE. PULG .003-.015 mm 0.1-0.4 FILETEAR ESQUINA: PULG .020 mm 0.5 MAQUINAR SUPERFICIES PULG 125 mm 3.2	APROBADO POR: JMW		02-28-2006
UL COMPONENT	CSA	DIMS METRICAS MOSTRADAS [PARENTESIS]	TERCER ANGULO DE PROYECCION	FECHA EDS: 11-11-2011	REV. FORMATO: H	NUMERO DE DIBUJO: B116
FILE#	CCN#	FILE#	GUIDE#	CONFIDENCIAL: ESTE DIBUJO Y SU INFORMACION SON PROPIEDAD DE USO EXCLUSIVO Y CONFIDENCIAL DE REGAL-BELOIT CORPORATION. Y NO DEBERAN SER REVELADOS, DUPLICADOS, DISTRIBUIDOS O USARSE DE OTRA MANERA SIN EL CONSENTIMIENTO ESCRITO DE REGAL-BELOIT CORPORATION. -TODOS LOS DERECHOS RESERVADOS.		ESCALA: NONE
E14663	XEWR2	LR4642	4211-01			HOJA: 1
CUSTOMER	DISTRIBUTION					