

REV	ECO	REV BY	DATE	APPD	DATE
C	0025531	F.NAVARRO	0423-2012	R.RASCON	04-23-2012

D

C

B

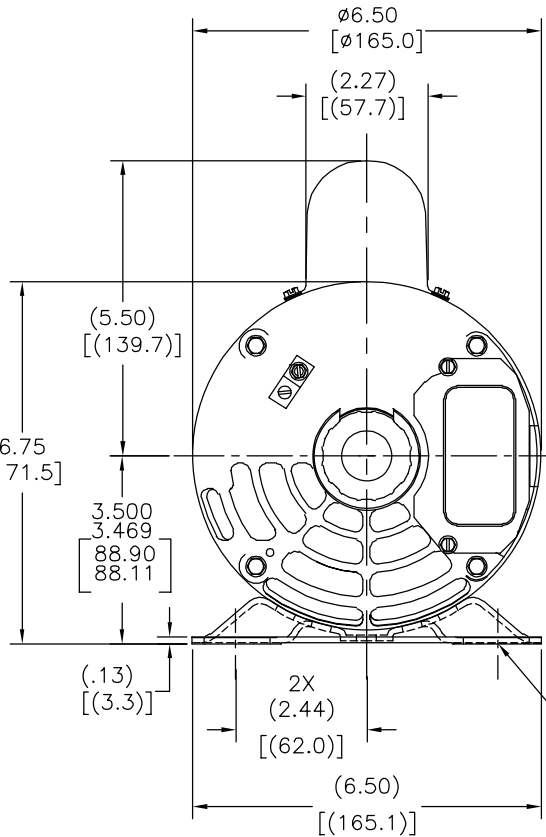
A

D

C

B

A



TOP OF
NON SVRS
ABOVE OF
SERIAL
STICKER

TOP OF
SERIAL
STICKER
AT 9:00 O'CLOCK

BONDING LUG

.5[12.7]-14 N.P.S.M.
WITH CAP

NAMEPLATE
MOUNTED
HORIZONTALLY
AT 2:00 O'CLOCK

4X
(.34[8.6]X1.22)

12.620±.055
[320.55±1.40]

(5.30)
[(134.6)]

.31
.19
[7.9
4.8]

(2.73)
[(69.3)]

2.37±.034
[60.2±.86]

1.825
1.795
[46.36
45.60]

(.56)
[(14.2)]

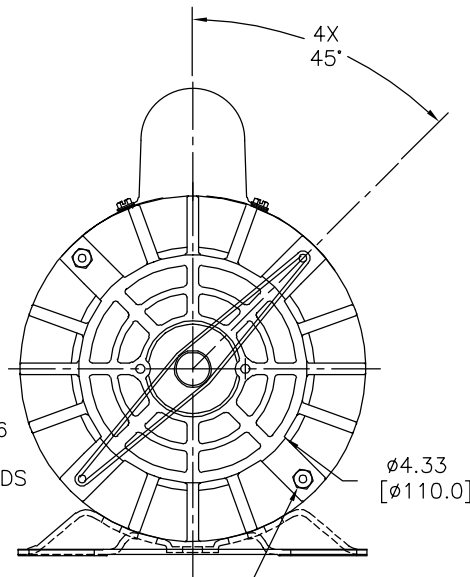
Ø.5000
.4995
[12.700
12.687]

.38[9.7]-16
UNC-2A
R.H. THREADS

SLINGER
1.78
1.72
[45.2
43.7]

(3.00)
[(76.2)]

(4.00)
[(101.6)]



2X
#10-32 UNF-2A
EXTENDED THRU-BOLTS
ON A 5.812±.050[147.62
±1.27] B.C.

NAMEPLATE DATA	EXTERNAL CONNECTION DIAGRAM	NOTES
MODEL: 193317 CUST PN: B237 HP: SF: ROT: CW RPM: 3450/1725 TYPE: CXPM CODE: C FORM: KHM FRAME: P56Y VOLTS: 230 AMPS: 12.0 MAX AMPS: SF AMPS: PH: 1 HZ: 60 INS: B AMB: 50 DUTY: CONT ENCLOSURE: ODP THERMALLY PROTECTED	<p>17050319</p> <p>WHITE — LINE</p> <p>— LINE</p> <p>NON-REVERSIBLE</p>	1.SHAFT RUNNOUT NOT TO EXTEND .002[.05] T.I.R.

PERFORMANCE CURVE	APPROVED SAMPLE	GEOMETRIC CHARACTERISTICS & SYMBOLS Z FLATNESS — STRAIGHTNESS — ANGULARITY — PERPENDICULARITY (SQUARENESS) // PARALLELISM O ROUNDNESS (CIRCULARITY) CYLINDRICITY △ PROFILE OF ANY SURFACE — PROFILE OF ANY LINE — RUNOUT ⊕ TRUE POSITION ⊙ CONCENTRICITY = SYMMETRY	UNLESS OTHERWISE SPECIFIED DIM. TOLERANCES ARE AS FOLLOWS: INCH X XX XXX XXXX ±.1 ±.02 ±.005 ±.0005 mm ±0.5 ±0.13 ±0.013 ANG. ±.50 DEG REMOVE BURRS & BREAK SHARP EDGES: INCH .003-.015 mm 0.1-0.4 CORNER FILLETS TO: INCH .020 mm 0.5 MACHINE SURFACES: INCH 125 mm 3.2	DR BY: AS APPD: TZ THIRD ANGLE PROJECTION EDS DATE 11-11-2011 FORMAT REV G	DESCRIPTION MODEL-CFHP-56FR OUTLINE SIZE C DWG NO B237 SCALE NONE SHEET 1
PERFORMANCE-CURVE	APPROVED-SAMPLE	ASME Y14.5M 1994	METRIC DIMS. SHOWN IN [BRACKETS]	CONFIDENTIAL: THIS DRAWING AND ITS INFORMATION ARE THE EXCLUSIVE AND CONFIDENTIAL PROPERTY OF REGAL-BELOIT CORPORATION AND ARE NOT TO BE DISCLOSED, DUPLICATED, DISTRIBUTED OR OTHERWISE USED WITHOUT THE WRITTEN CONSENT OF REGAL-BELOIT CORPORATION. -ALL RIGHTS RESERVED.	

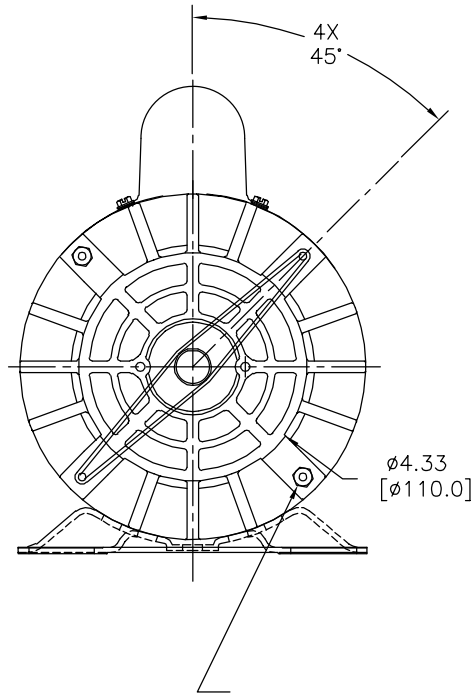
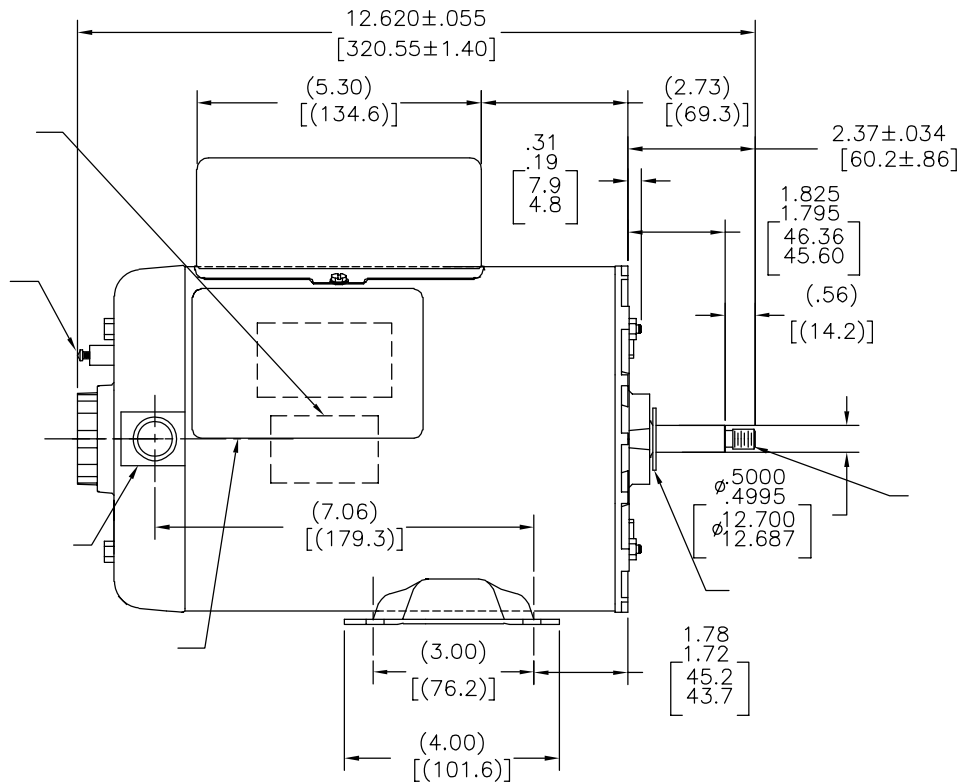
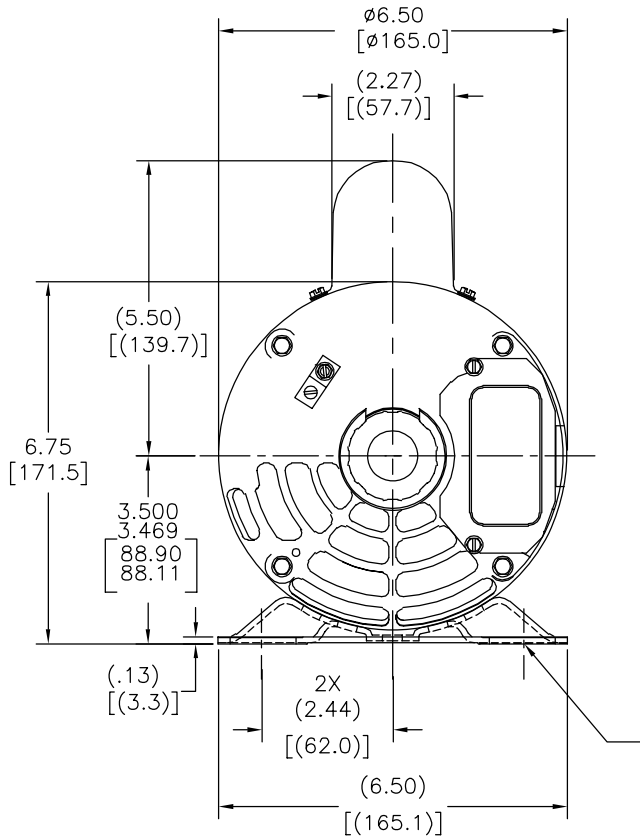
4

3



2

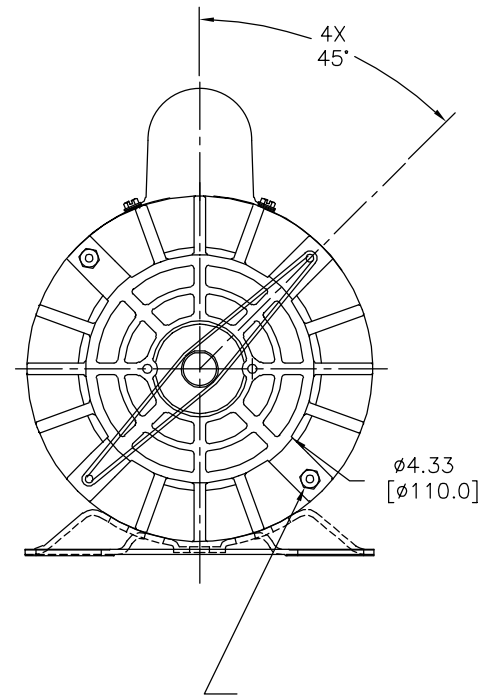
1

REVISION:	ECO	REVISADO POR:	FECHA:	APROBADO POR:	FECHA:
C	0025531	F.NAVARRO	0423-2012	R.RASCON	04-23-2012




NAMEPLATE DATA	EXTERNAL CONNECTION DIAGRAM	NOTES
MODEL: 193317 CUST PN: B237 HP: SF: ROT: CW RPM: 3450/1725 TYPE: CXPM CODE: C FORM: KHM FRAME: P56Y VOLTS: 230 AMPS: 12.0 MAX AMPS: SF AMPS: PH: 1 HZ: 60 INS: B AMB: 50 DUTY: CONT ENCLOSURE: ODP THERMALLY PROTECTED	<p>WHITE — LINE — LINE NON-REVERSIBLE</p>	

PERFORMANCE CURVE		APPROVED SAMPLE		<div>CARACTERISTICAS DE GEOMETRIA Y SIMBOLOS</div> <div>✓ PLANICIDAD — RECTITUD ∠ ANGULARIDAD ⊥ PERPENDICULARIDAD (A ESQUADRA) // PARALELISMO ○ REDONDEZ (CIRCULARIDAD) ⊙ CILINDRICIDAD △ PERFIL DE CUALQUIER SUPERFICIE ∇ PERFIL DE CUALQUIER LINEA ↑ VARIACION ⊕ POSICION REAL ⊙ CONCENTRICIDAD = SIMETRIA</div> <div>ASME Y14.5M 1994</div> <div>DIMS METRICAS MOSTRADAS [PARENTESIS]</div>		DIBUJADO POR: AS		10-14-2010		<div> REGAL-BELOIT CORPORATION</div>	
PERFORMANCE-CURVE		APPROVED-SAMPLE				APROBADO POR: TZ		10-14-2010			
UL COMPONENT		CSA				<div>TERCER ANGULO DE PROYECCION</div> <div></div> <div>FECHA EDS: 11-11-2011 REV. FORMATO: G</div>		<div>DESCRIPCION:</div> <div>MODEL-CFHP-56FR OUTLINE</div>			
FILE#	CCN#	FILE#	GUIDE#							TAMAÑO: C	NUMERO DE DIBUJO: B237
FILE#	CCN#	FILE#	GUIDE#			ESCALA: NONE				HOJA: 1	



名称	MODEL-CFHP-56FR OUTLINE		
图幅	C	图号	B237
比例	NONE	页号	1

PERFORMANCE CURVE		APPROVED SAMPLE		<div>形位公差 □ 平面度 — 直线度 ∠ 倾斜度 ⊥ 垂直度 // 平行度 ○ 圆度 ⊙ 圆柱度 面轮廓度 线轮廓度 圆跳动 ⊕ 位置度 ◎ 同轴度 = 对称度</div>	<div>除另有注明 尺寸公差如下: 英寸 X ±.1 XX ±.02 XXX ±.005 XXXX ±.0005 毫米 ±.5 ±.13 ±.013 ±.013 角度 ±.50 清理毛刺和尖棱 英寸 .003-.015 毫米 0.1-0.4 内圆角 英寸 .020 毫米 0.5 表面粗糙度 英制 125 米制 3.2</div>	绘图: AS	10-14-2010
PERFORMANCE-CURVE		APPROVED-SAMPLE				批准: TZ	10-14-2010
UL COMPONENT		CSA				<div> 图纸格式发布日期 11-11-2011 图纸格式版本 G</div>	
FILE#	CCN#	FILE#	GUIDE#				
FILE#	CCN#	FILE#	GUIDE#				
CUSTOMER	CUSTOMER			ASME Y14.5M, 1994 米制尺寸显示在 []	第三角投影 机密: 本图纸及相关信息所有权归REGAL-BELOIT CORPORATION 未经REGAL-BELOIT CORPORATION书面授权, 不得泄露、 复制、传播或作其他用途。--版权所有		