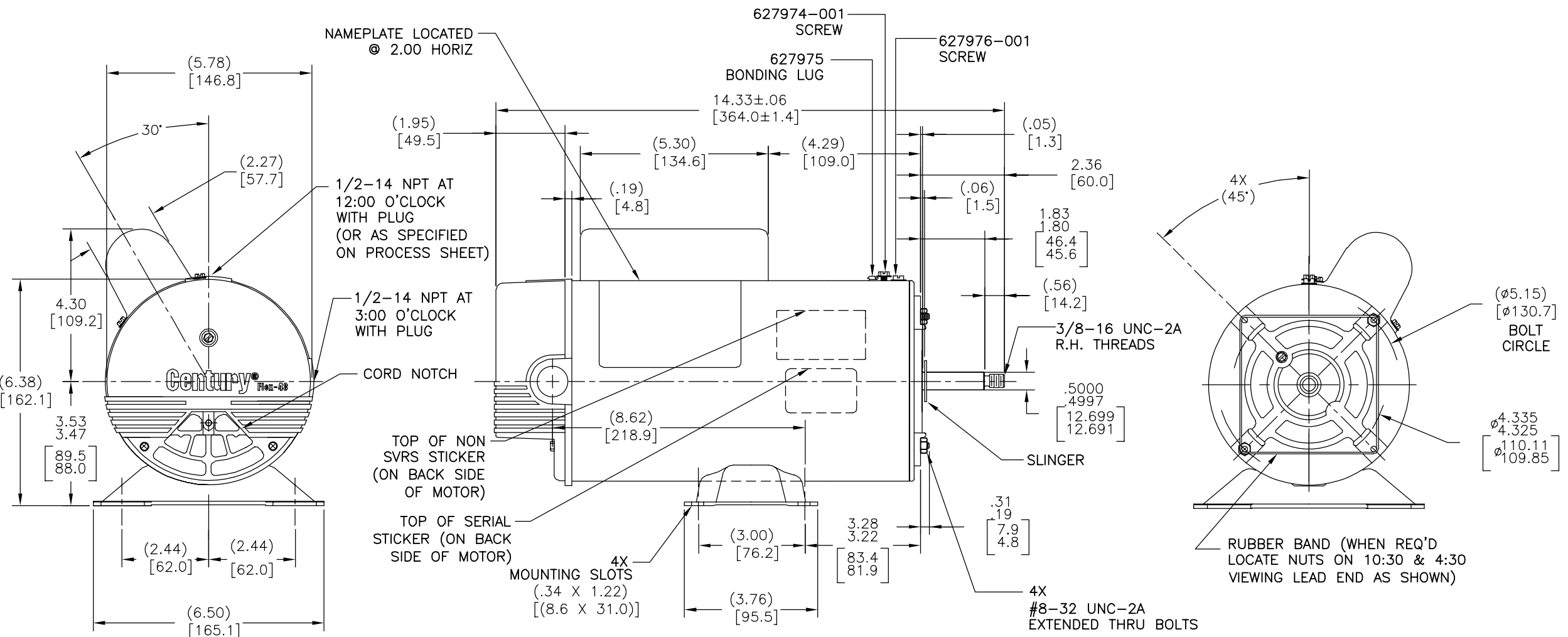
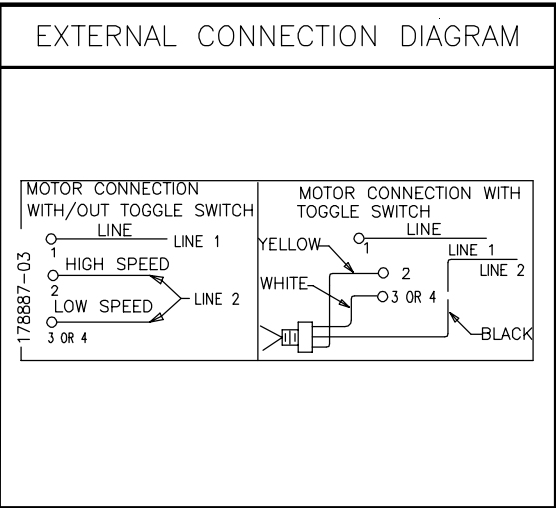


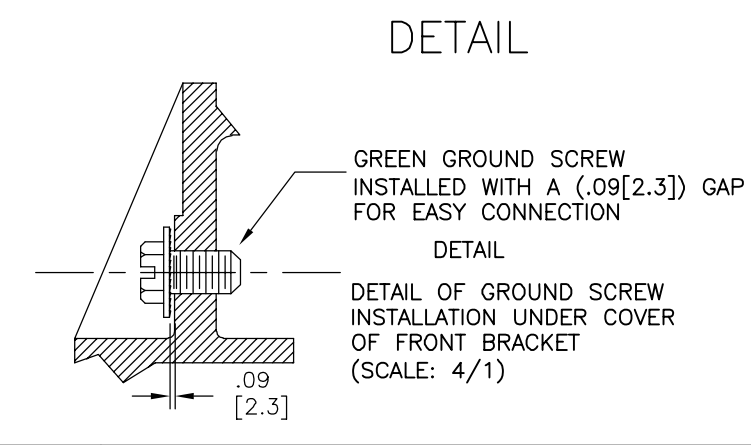
REV	ECO	REV BY	DATE	APPD	DATE
F	0032373	M.JOSEFOVSKY	05-07-2013	M.OVERHOLSER	05-07-2013



NAMEPLATE DATA	
MODEL: 193559	CUST PN: BN63
HP: 4.0-.42 SPL SF: -	ROT: CCWPE
RPM: 3450/1725	TYPE: CXSM
FORM: PHM	FORM: PHM
VOLTS: 230	AMPS: 12.0/3.5
MAX AMPS: -	SF AMPS: -
PH: 1	INS: B
DUTY: CONT	ENCLOSURE: ODP
HERMALLY PROTECTED	



- NOTES
1. ALL DIMENSIONS SHOWN IN PARENTHESIS ARE REFERENCE DIMENSIONS.
 2. THE BOTTOM TWO THRU BOLTS IN SHAFT END BRACKET ARE TO BE PARALELL TO BASE WITHIN (.060)[1.52].
 3. LEAD END FRAME TO BE ORIENTED TO DRIVE END FRAME TO WITHIN +/- 2'.



PERFORMANCE CURVE	APPROVED SAMPLE		
18071711	-		
UL COMPONENT	CSA		
FILE#	CCN#	FILE#	GUIDE#
E44549	PRGY2	LR4642	4211-01
CUSTOMER	DISTRIBUTION		

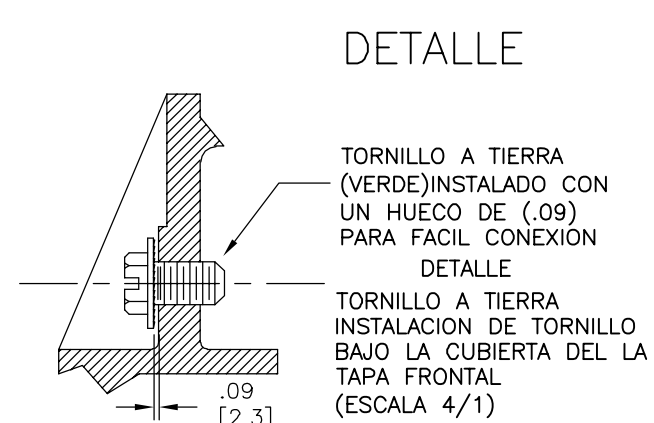
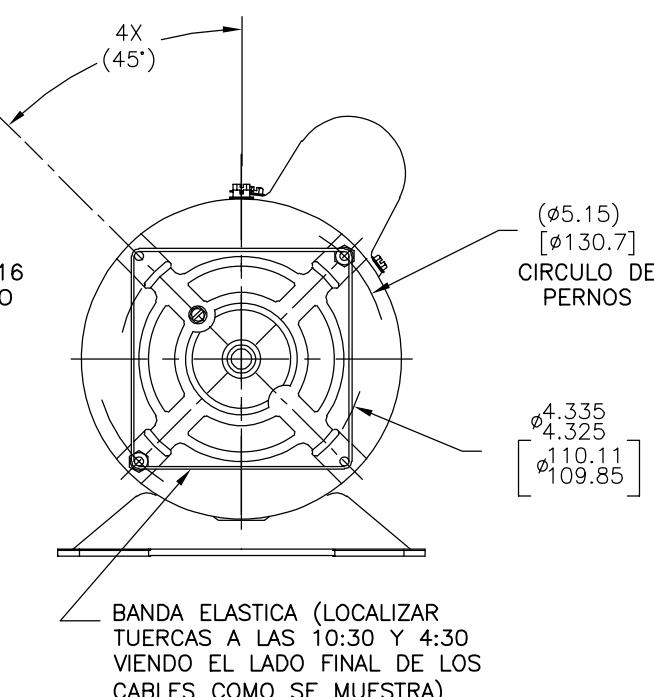
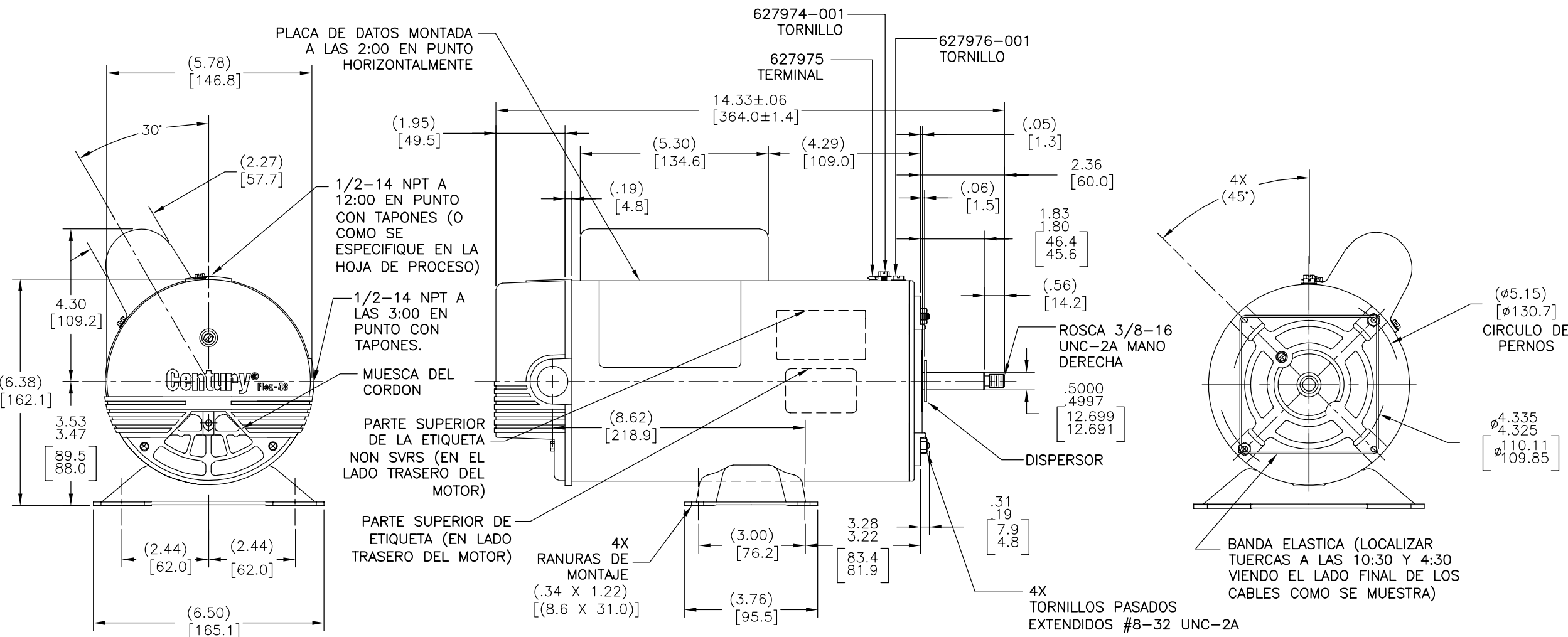
GEOMETRIC CHARACTERISTICS & SYMBOLS
□ FLATNESS
- STRAIGHTNESS
∠ ANGULARITY
⊥ PERPENDICULARITY (SQUARENESS)
// PARALLELISM
○ ROUNDNESS (CIRCULARITY)
∅ CYLINDRICITY
△ PROFILE OF ANY SURFACE
∩ PROFILE OF ANY LINE
∠ RUNOUT
⊕ TRUE POSITION
◎ CONCENTRICITY
≡ SYMMETRY

UNLESS OTHERWISE SPECIFIED DIM. TOLERANCES ARE AS FOLLOWS:
INCH X XX XXX XXXX
±.1 ±.02 ±.005 ±.0005
mm ±0.5 ±0.13 ±0.013
ANG. ±.50 DEG
REMOVE BURRS & BREAK SHARP EDGES:
INCH .003-.015 mm 0.1-0.4
CORNER FILLETS TO:
INCH .020 mm 0.5
MACHINE SURFACES:
INCH 125 mm 3.2
METRIC DIMS. SHOWN IN [BRACKETS]

DR BY: TZ	10-14-2010
APPD: BS	10-14-2010
THIRD ANGLE PROJECTION	EDS DATE 11-11-2011
	FORMAT REV H
CONFIDENTIAL: THIS DRAWING AND ITS INFORMATION ARE THE EXCLUSIVE AND CONFIDENTIAL PROPERTY OF REGAL-BELOIT CORPORATION AND ARE NOT TO BE DISCLOSED, DUPLICATED, DISTRIBUTED OR OTHERWISE USED WITHOUT THE WRITTEN CONSENT OF REGAL-BELOIT CORPORATION. -ALL RIGHTS RESERVED.	

REGAL REGAL-BELOIT CORPORATION	
DESCRIPTION	
MODEL-CFHP-48FR OUTLINE	
SIZE C	DWG NO BN63
SCALE NONE	SHEET 1

REVISION:	ECO	REVISADO POR:	FECHA:	APROBADO POR:	FECHA:
F	0032373	M.JOSEFOVSKY	05-07-2013	M.OVERHOLSER	05-07-2013



NAMEPLATE DATA	EXTERNAL CONNECTION DIAGRAM	NOTES
MODEL: 193559 CUST PN: BN63 HP: 4.0-.42 SPL SF: - ROT: CCWPE RPM: 3450/1725 TYPE: CXSM FORM: PHM VOLTS: 230 AMPS: 12.0/3.5 MAX AMPS: - SF AMPS: - PH: 1 INS: B DUTY: CONT ENCLOSURE: ODP THERMALLY PROTECTED		1. TODAS LAS DIMENSIONES MOSTRADAS EN PARENTESIS SON DIM. DE REFERENCIA. 2. LOS DOS TORNILLOS INFERIORES PASADOS EN FLECHA Y TAPA FINAL DEBEN ESTAR PARALELOS CON LA BASE DENTRO DE (.060)[(1.52)]. 3. LA SALIDA DE LOS CABLES DEBE ESTAR ORIENTADA HACIA EL LADO MOTRIZ DEL MOTOR DENTRO DE +/- 2'.

PERFORMANCE CURVE	APPROVED SAMPLE	CARACTERISTICAS DE GEOMETRIA Y SIMBOLOS □ PLANICIDAD - RECTITUD < ANGULARIDAD ⊥ PERPENDICULARIDAD (A ESQUADRA) // PARALELISMO ○ REDONDEZ (CIRCULARIDAD) ∅ CILINDRICIDAD △ PERFIL DE CUALQUIER SUPERFICIE ∩ PERFIL DE CUALQUIER LINEA † VARIACION ⊕ POSICION REAL ⊙ CONCENTRICIDAD = SIMETRIA	A MENOS QUE SE ESPECIFIQUE DE OTRA MANERA, LAS TOLERANCIAS DE LAS DIMS; SON LAS SIGUIENTES: PULG ±.1 ±.02 ±.005 ±.0005 mm ±0.5 ±0.13 ±0.013 ANG. ±.50 GRADOS ELIMINAR REBABAS Y ORILLAS FILOSAS DEL BORDE. PULG .003-.015 mm 0.1-0.4 FILETEAR ESQUINA: PULG .020 mm 0.5 MAQUINAR SUPERFICIES PULG 125 mm 3.2	DIBUJADO POR:	10-14-2010	REGAL-BELOIT CORPORATION			
18071711	-			APROBADO POR:	BS		10-14-2010	DESCRIPCION:	MODEL-CFHP-48FR OUTLINE
UL COMPONENT	CSA	DIMS METRICAS MOSTRADAS [PARENTESIS]	CONFIDENCIAL: ESTE DIBUJO Y SU INFORMACION SON PROPIEDAD DE USO EXCLUSIVO Y CONFIDENCIAL DE REGAL-BELOIT CORPORATION. Y NO DEBERAN SER REVELADOS, DUPLICADOS, DISTRIBUIDOS O USARSE DE OTRA MANERA SIN EL CONSENTIMIENTO ESCRITO DE REGAL-BELOIT CORPORATION. -TODOS LOS DERECHOS RESERVADOS.	TERCER ANGULO DE PROYECCION	FECHA EDS: 11-11-2011	TAMAÑO:	C	NUMERO DE DIBUJO:	BN63
FILE#	CCN#			FILE#	GUIDE#	ESCALA: NONE	HOJA: 1		
E44549	PRGY2	LR4642	4211-01						
CUSTOMER	DISTRIBUTION								