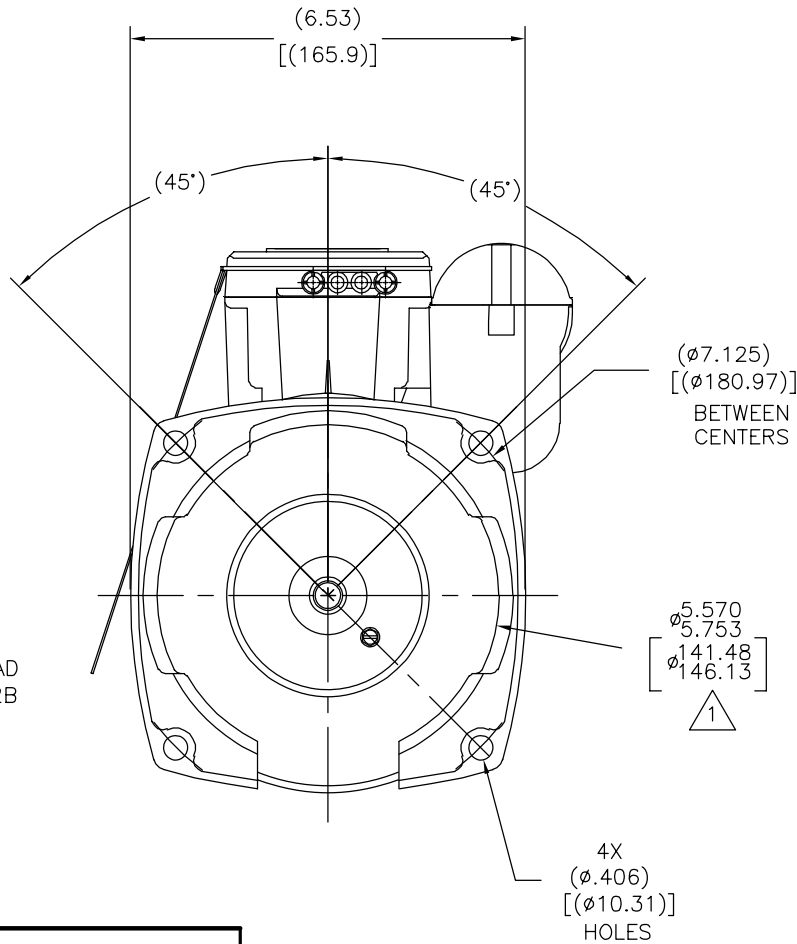
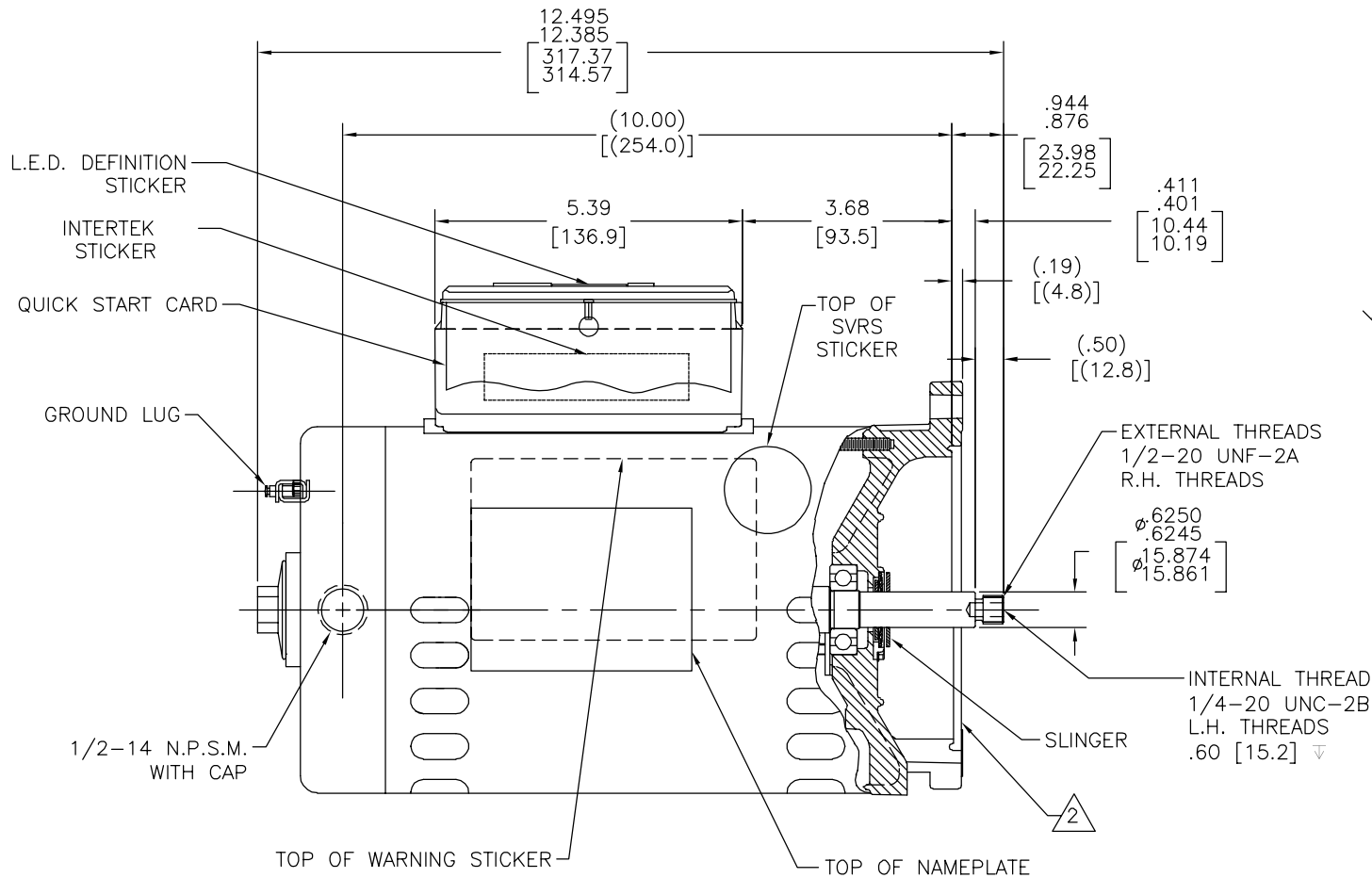


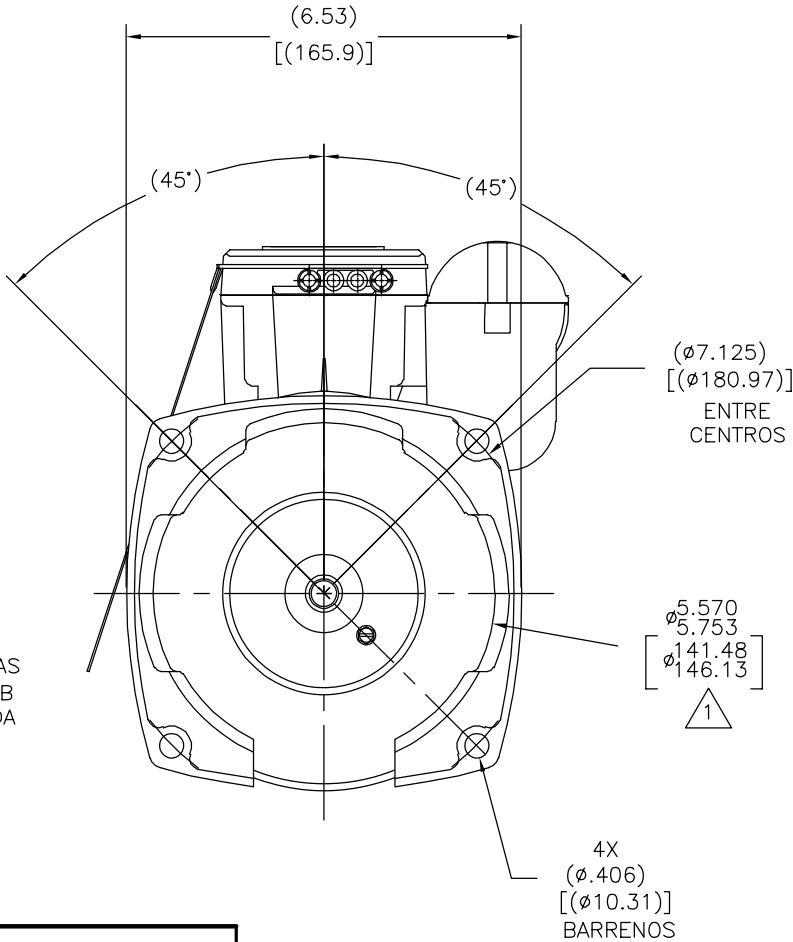
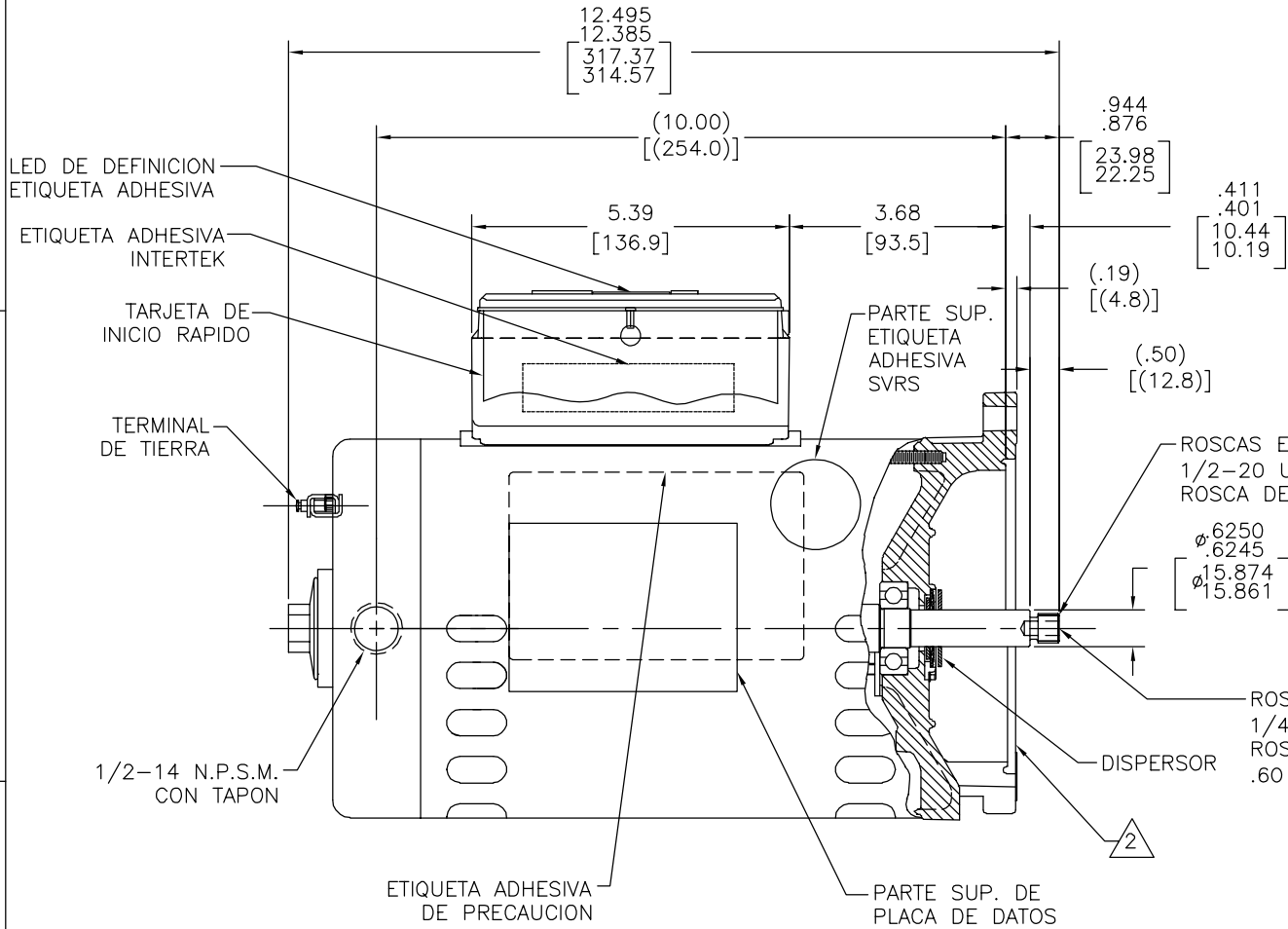
REV	ECO	REV BY	DATE	APPD	DATE
B	0007686	D.MUÑOZ	7-18-2009	J.ORTEGA	07-18-2009



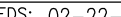
NAMEPLATE DATA	EXTERNAL CONNECTION DIAGRAM	NOTES
MODEL: F56AA32A01 CUST PN: BG853A HP: 1.0 SF: 1.25 ROT: CCWPE RPM: 3450 TYPE: CX CODE: J FORM: FRAME: P 56 Y VOLTS: 230/115 AMPS: MAX AMPS: SF AMPS: 7.1/14.2 PH: 1 HZ: 60 INS: B AMB: 50°C DUTY: CONT ENCLOSURE: ODP THERMALLY PROTECTED	<p>LOW VOLTAGE BROWN → B WHITE → L1 LINE WHITE → L2 LINE A NON-REVERSIBLE</p> <p>HIGH VOLTAGE WHITE → B L1 LINE L2 LINE BROWN → A</p>	1. PILOT DIAMETER IS CONCENTRIC WITH SHAFT CENTERLINE WITHIN .006[.15] T.I.R. 2. FACE OF MOUNTING FLANGE IS PERPENDICULAR TO SHAFT CENTERLINE WITHIN .004[.10] T.I.R. 3. SHAFT RUNOUT NOT TO EXCEED .002[.05] T.I.R. 4. FOR THREADED SHAFT EXT. MATING PARTS SHOULD BE RELIEVED ONE THREAD TO CLEAR FILLET 5. FOR THREADED SHAFT EXT. ECCENTRICITY OF THREADED PORTION OF SHAFT IS HELD WITHIN .004[.10] TOTAL GAGE READING WITH THE INDICATOR ON O.D. OF GROUND RING GAGE AS SHOWN. THE GAGE BEING STATIONARY WITH RESPECT TO THE ROTOR. 6. ENDPLAY NOT TO EXCEED .010[.25] MEASURED WITH NO THRUST 7. ALL DIMENSIONS SHOWN IN PARENTHESIS ARE REFERENCE DIMENSIONS. 8. FINISH PAINT TO BE SATIN BLACK

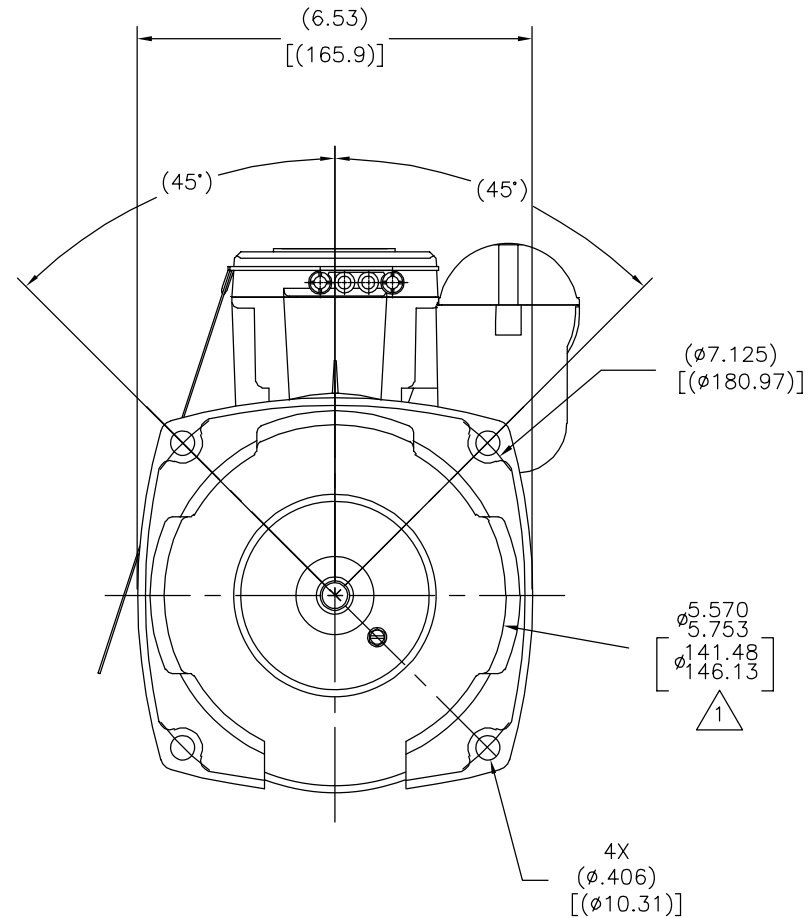
PERFORMANCE CURVE	APPROVED SAMPLE	GEOMETRIC CHARACTERISTICS & SYMBOLS	UNLESS OTHERWISE SPECIFIED DIM. TOLERANCES ARE AS FOLLOWS:	DR BY: JHENRY	03-16-09	ACSmith Innovation has a name. ELECTRICAL PRODUCTS COMPANY A DIVISION OF A. O. SMITH CORPORATION
16381911		FLATNESS STRAIGHTNESS ANGULARITY PERPENDICULARITY (SQUARENESS) PARALLELISM ROUNDNESS (CIRCULARITY) CYLINDRICITY PROFILE OF ANY SURFACE PROFILE OF ANY LINE RUNOUT TRUE POSITION CONCENTRICITY SYMMETRY	INCH X XX XXX XXXX ±.1 ±.02 ±.005 ±.0005 mm ±0.5 ±0.13 ±0.013 ANG. ±50 DEG REMOVE BURRS & BREAK SHARP EDGES: INCH .003-.015 mm 0.1-0.4 CORNER FILLETS TO: INCH .020 mm 0.5 MACHINE SURFACES: INCH 125 mm 3.2 METRIC DIMS. SHOWN IN [BRACKETS]	APPD:		DESCRIPTION OUTLINE
UL COMPONENT	CSA			THIRD ANGLE PROJECTION	EDS DATE 02-22-2008 FORMAT REV F	SIZE C DWG NO BG853A
FILE#	CCN#	FILE#	GUIDE#			SCALE NONE SHEET 1
PENDING	PENDING	PENDING	PENDING			
CUSTOMER	DIST. SERVICES					


REVISION:	ECO	REVISADO POR:	FECHA:	APROBADO POR:	FECHA:
B	0007686	D.MUÑOZ	7-18-2009	J.ORTEGA	07-18-2009



NAMEPLATE DATA	EXTERNAL CONNECTION DIAGRAM	NOTES
MODEL: F56AA32A01 CUST PN: BG853A HP: 1.0 SF: 1.25 ROT: CCWPE RPM: 3450 TYPE: CX CODE: J FORM: FRAME: P 56 Y VOLTS: 230/115 AMPS: MAX AMPS: SF AMPS: 7.1/14.2 PH: 1 HZ: 60 INS: B AMB: 50°C DUTY: CONT ENCLOSURE: ODP THERMALLY PROTECTED	<p>LOW VOLTAGE: BROWN → B, WHITE → L1 LINE, WHITE → L2 LINE, A → NON-REVERSIBLE</p> <p>HIGH VOLTAGE: WHITE → B, L1 LINE, L2 LINE, BROWN → A</p>	<p>⚠ EL DIAMETRO DEL PILOTO ES CONCENTRICO CON LA DE LA FLECHA DENTRO DE .006[.15] L.T.I.</p> <p>⚠ LA CARA DEL BORDE DE MONTAJE ES PERPENDICULAR A LA DE LA FLECHA DENTRO DE .004[.10] L.T.I.</p> <p>⚠ OSCILACION DE LA FLECHA NO DEBE EXCEDER .002[.05] L.T.I.</p> <p>4. PARA LA EXTENSION DE FLECHA ROSCADA, LAS PARTES QUE COINCIDAN SERAN REBAJADAS UNA ROSCA PARA LIBRAR EL FILO.</p> <p>5. PARA EXTENSION DE FLECHA ROSCADA LA EXCENTRICIDAD DE LA PORCION ROSCADA DE LA FLECHA SE MANTENDRA DENTRO DE .004[.10] LECTURA TOTAL DE CALIBRADOR CON EL INDICADOR EN EL DIAMETRO EXTERIOR DEL ANILLO CALIBRADOR COMO SE MUESTRA. EL MEDIDOR ESTA FIJO CON RESPECTO AL ROTOR.</p> <p>6. EL JUEGO AXIAL NO DEBE EXCEDER .010[.25] MEDIDO SIN TENER EMPUJE.</p> <p>7. TODAS LAS DIMENSIONES MOSTRADAS EN PARENTESIS SON DIMENSIONES DE REFERENCIA.</p> <p>8. EL ACABADO DE LA PINTURA SERA NEGRO SATINADO.</p>

PERFORMANCE CURVE		APPROVED SAMPLE		CARACTERISTICAS DE GEOMETRIA Y SIMBOLOS ✓ PLANICIDAD — RECTITUD ∠ ANGULARIDAD ⊥ PERPENDICULARIDAD (A ESCUADRA) // PARALELISMO ○ REDONDEZ (CIRCULARIDAD) / CILINDRICIDAD △ PERFIL DE CUALQUIER SUPERFICIE / PERFIL DE CUALQUIER LINEA ↗ VARIACION ⊕ POSICION REAL ◎ CONCENTRICIDAD ≡ SIMETRIA	A MENOS QUE SE ESPECIFIQUE DE OTRA MANERA, LAS TOLERANCIAS DE LAS DIMS. SON LAS SIGUIENTES: X XX XXX XXXX PULG ±.1 ±.02 ±.005 ±.0005 mm ±0.5 ±0.13 ±0.013 ANG. ±.50 GRADOS ELIMINAR REBABAS Y ORILLAS FILOSAS DEL BORDE. PULG .003-.015 mm 0.1-0.4 FILETEAR ESQUINA: PULG .020 mm 0.5 MAQUINAR SUPERFICIES PULG 125 mm 3.2		DIBUJADO POR: JHENRY		03-16-09		<div>ACSmith</div> <div>Innovation has a name.</div> <div>ELECTRICAL PRODUCTS COMPANY</div> <div>A DIVISION OF A. O. SMITH CORPORATION</div>			
16381911							APROBADO POR:					DESCRIPCION: OUTLINE		
UL COMPONENT		CSA					TERCER ANGULO DE PROYECCION		 FECHA EDS: 02-22-2008					
FILE#	CCN#	FILE#	GUIDE#						REV. FORMATO: F					
PENDING	PENDING	PENDING	PENDING											
CUSTOMER	DIST. SERVICES				DIMS METRICAS MOSTRADAS [PARENTESIS]						TAMAÑO: C	NUMERO DE DIBUJO: BG853A	ESCALA: NONE	HOJA: 1



PERFORMANCE CURVE		APPROVED SAMPLE		<div>形位公差 □ 平面度 — 直线度 ∠ 倾斜度 ⊥ 垂直度 // 平行度 ○ 圆度 ⊙ 圆柱度 面轮廓度 △ 线轮廓度 ↗ 圆跳动 ↑ 位置度 ⊙ 同轴度 ≡ 对称度</div>	<div>除另有注明 尺寸公差如下: X XX XXX XXXX 英寸 ±.1 ±.02 ±.005 ±.0005 毫米 ±0.5 ±0.13 ±0.013 角度 ±.50 度 清理毛刺和尖棱 英寸 .003-.015 毫米 0.1-0.4 内圆角 英寸 .020 毫米 0.5 表面粗糙度 英制 125 米制 3.2 米制尺寸显示在 []</div>	绘图: JHENRY 03-16-09		<div>ACSmith Innovation has a name.</div> <div>ELECTRICAL PRODUCTS COMPANY A DIVISION OF A. O. SMITH CORPORATION</div>	
16381911						名称		OUTLINE	
UL COMPONENT		CSA				第三角投影 		图幅 C 图号 BG853A	
FILE#	CCN#	FILE#	GUIDE#			机密: 本图纸及相关信息所有权归A. O. SMITH公司所有。 未经A. O. SMITH公司书面授权, 不得泄露、复制、传播或作其他用途。一版权所有			
PENDING	PENDING	PENDING	PENDING						
CUSTOMER	DIST. SERVICES			ASME Y14.5M 1994		比例 NONE		页号 1	