

KOOL DECK® E L I T E™

Contractor Brochure

Kool Deck just got better.

Kool Deck® Elite™ is the newest addition to the concrete topping line from Mortex. This Elite product shares all the benefits you have come to expect from a genuine Kool Deck surface, like significantly lowering the surface temperature of concrete and being environmentally safe, but with an enhanced formula and the ease of a pre-mixed package that is bucket mixable.

Kool Deck Elite helps you create a better surface while eliminating time and money spent sourcing proper size marble sand and white cement.

- Unparalleled value on per square foot basis
- Performance, versatility and convenience for large and small decks
- Now mixable in a 5 gallon bucket
- Basic 50 lb pre-mixed bag - Just add water and a Color-Unit pack
- Consistent color proportioning with Color-Unit pack
- Enhanced formula for resistance to modern chemical attacks, craze cracking, etc.
- Pre-mixed simplicity translates into better decks, time after time

Coverage
A properly mixed unit should cover 65 to 70 ft ² per 50 lb bag (6 to 6.5 M ² per 22.68 kg)
Measurements
Bag measures 14" x 19" x 4" (35.6 cm x 48.2 cm x 10 cm)
Weight
Total approximate bag weight 50 lbs. (22.7 kg)
Shipping Info
UPS, FedEx, freight truck, ocean or air

Color-Unit System

Color-Unit packs are the solution to consistent color proportioning. Kool Deck Elite has been specifically made to be free from color (white), so you can add the color you want, when you want it. These small 1 to 1.5 pound bags come in all Kool Deck and Designer Color Palettes, and are easily added on a simple one Color-Unit pack to one 50 pound Elite bag. Our separation of the color from the pre-mix saves you extra freight cost, time & storage space by having a truly versatile product.



Instructions for Kool Deck® Elite™ Application

Necessary Tools

- Mortex Dash Brush
- Clean, 5 gallon Bucket (for mixing)
- 1 Gallon container (for measuring water)
- Heavy-Duty 3/4" Power Drill
- Rectangular Blade Mixing Paddle
- Steel Finishing trowels
- Mortex Viscosity Cup

Required Materials

- 1 Color-Unit™ pack
- 1 Bag of Kool Deck Elite

Optional Tools

- Paddle type plaster mixer
- Mortex Ad-Tex Sprayer
- Mortex Pattern Blade

Coverage: 65 to 70 ft² per 50 lb bag (6 to 6.5 M² per 22.68 kg)

Kool Deck® Elite™ is a colorless (white) product. Use of a Mortex Color-Unit™ pack is required to achieve desired color.

Note: Kool Deck Elite can easily be applied to existing concrete surfaces properly prepared with our PTA Bonding Agent or to green concrete, as described below.

Instructions for Kool Deck® Elite – Green Concrete Application

Surface Requirements

- Be sure to grade so the deck will be uniform in thickness.
- Wet down the sub soil thoroughly just before the pour.
- Cover all walls and aluminum with plastic or paper. (Cement will corrode and blacken aluminum.)

Pouring The Slab

1. Order a five-bag mix, a little on the rocky side. A faster cure and higher strength may be achieved with a six bag mix.
2. When ordering concrete, stipulate that no additives are to be included in your concrete. Serious problems can result from the use of additives in conjunction with our product. When air-entrainment is necessary, consult with Mortex on the appropriate type to use.
3. After placing the concrete, tamping, and floating, continue to work with the concrete. The finished deck will only be as level as the base concrete.
4. Broom to scarify the entire slab. Use a nylon bristled push broom right behind the troweling. Make only one pass. (Do not sweep loose sand to the surface, as this can cause a barrier between the concrete and the Kool Deck Elite.) Leave the mass concrete with open pores for bonding purposes, but not coarse enough that the roughness is revealed through the finished deck surface.

Mixing Kool Deck® Elite™ in a 5 Gallon Bucket (Follow Carefully)

1. Pour 1 gallon (3.79 L) of Water into Mixing Bucket.
2. Mix one (1) entire Color-Unit pack into Mixing water, using the heavy-duty drill with paddle blade. Dump entire 50 lb bag of Kool Deck Elite into colored water while mixing.
3. Mix for two (2) minutes into an even colored, thick paste. Allow the mix to stand for one (1) minute.
4. Restart mixing. Slowly add an additional 2 gallons (7.57 L) of Water to the mix.
5. Use a Mortex Viscosity Cup as a final guide on proper consistency. Mix should empty a full Viscosity Cup in 17 seconds for flat surfaces and 20 seconds for colder weather.
6. When using a Paddle-Type Plaster Mixer, it is necessary to use a MINIMUM of 3 bags of Kool Deck Elite per batch. Simply multiply the above referenced mixing times and amounts by the number of bags used. For example, a 3 bag mix would require an initial 3 gallons of water, followed by 3 Color-Unit packs, and then 3 bags of Kool Deck Elite material, etc.

Mixing Kool Deck Elite in a Paddle Type Mixer

Note: A minimum of 3 bags of Kool Deck Elite is necessary per batch.

1. Start mixer and add 3 gallons (11.36 L) of water into the mixer.
2. Add 3 Color-Unit packs into the mixer.
3. Add 3 – 50 lb bags of Kool Deck Elite into the mixer.
4. Mix for three (3) minutes into an even colored, thick paste.
5. Slowly add an additional 6 gallons (22.7 L) of Water to the mix.
6. Use a Mortex Viscosity Cup as a final guide on proper consistency. Mix should empty a full Viscosity Cup in 17 seconds for flat surfaces and 20 seconds for colder weather.

WARNING: Idle the mixer before checking the consistency of the mix with your Viscosity Cup. Never reach into a mixer with your body.

Splashing The Kool Deck Elite Mixture

1. Test the base concrete slab. The concrete base is ready for the surfacing to be applied when it can be walked on without leaving deep depressions, but still shows a water rise in foot impression.
2. Pour the mix from the mixing bucket or paddle mixer into a five gallon bucket.
3. Begin applying. Dip the brush into the mix covering the full length of the bristles and start splashing the mixture. If necessary, additional water should be added to the Kool Deck Elite mixture so the material will rain from the brush and have a creamy appearance when splashed. Use Viscosity Cup according to instructions for best consistency.

Suggestion: The best texture is achieved by raising the brush high and moving the hand forward, snapping back with the wrist. This motion causes the mix to rain from the brush and gives an even, uniform texture.

4. Splash on the mixture in even, straight, side by side rows, being sure to overlap so as not to leave any holidays. The first splashing should be used to cover the deck.
5. Resplash the deck just before the first application has lost its water glaze. When applying a light second splash, allow the Kool Deck Elite mixture to rain down from the Dash Brush. The second splashing will drive the Kool Deck Elite surface into high peaks for good texture. The high texture produced by the second splash is necessary to allow troweling time and to give a better pattern.

Troweling Kool Deck Elite

1. Begin to trowel as the water glaze leaves the deck. The pattern is set with the first trowel pass. The trowel must be held perfectly flat with a light hand. (The ideal tool is a Mortex Pattern Blade or a worn, cupped trowel)
2. The second troweling must follow immediately behind the first. With the trowel held flat, feel for uneven surface, leveling it as you go.
3. The second pass is necessary to bring the deck into a uniformly dense and colorfast deck surface. The finished deck should reveal approximately a 40% smooth and a 60% void surface. This prevents craze cracking since the knolls may expand and contract from the voids.

Completion Of Work

1. Remove tape masking from joints and drains, clean up around the job site and you are finished.
2. A Kool Deck Elite surface contains its own sealer and curing agents, so no further work on the deck surface is required.
3. Remind the deck owner to avoid traversing and placing furniture on the deck until the deck has had time to harden and cure sufficiently to warrant general use. (Approximately 21 days)

Points To Remember

- Be sure to work the base concrete sufficiently. Areas left unworked are detrimental to a permanent bond.
- Make sure the Kool Deck Elite mixture is thin enough. A mixture that is too thick will result in low square foot coverage, poor finished pattern, an accelerated setting time, and more craze cracking. The best Kool Deck Elite surface is not more than 5/32 inch thick.
- Apply the Kool Deck Elite mixture while there is still enough moisture in the base concrete to facilitate the curing of the Kool Deck Elite topping.
- Splash twice. The first splashing should be used to cover the deck. The second splashing will drive the Kool Deck surface into high peaks for good texture.

In Case Of Rain Or Other Unforeseen Difficulties

Should it be necessary to cover the deck with plastic, be sure the plastic is removed as soon as possible. Failure to do so may result in a whitish film on the deck surface.

The manufacturer offers this product and Information in good faith, but without guarantee either expressed or implied, as conditions and methods of use of our product are beyond our control.

Kool Deck® Elite™

1. Comfort - Even during the hottest summer days, you can walk, sit, sunbathe or play on your Kool Deck Elite surface. It's more comfortable because it stays cooler than plain concrete or other decking surfaces.

2. Durability - Kool Deck Elite concrete topping is specifically formulated to be far stronger, more durable, and more stain-resistant than other surfaces. It will stand up against even the roughest, most demanding environments such as 100°+ days to freezing nights.

3. Safety - Kool Deck Elite topping creates a non-skid, textured surface that is designed to help reduce the risk of accidents, even when wet, to give you peace of mind.

4. Beauty - A Kool Deck Elite surface is a beautiful addition to your pool, walkway, patio or entire landscape package. The rich, consistent color and texture make it much more attractive than plain concrete. Its beauty compliments the natural environment and other landscaping techniques.

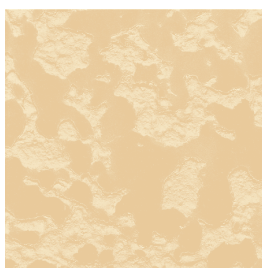
5. Cost - This is the best - even with its far superior quality, a Kool Deck Elite surface is less expensive than other deck surfacing products. The quality of a Kool Deck Elite surface adds distinction and lasting value to your property.

6. Variety - Kool Deck Elite toppings offer you a striking choice of luxurious, pastel colors...one which is perfect for the environment you want to create.

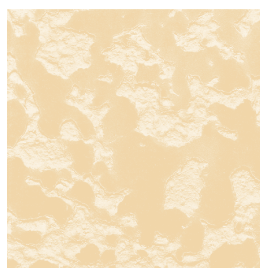
Kool Deck Elite Color-Unit™ Colors



Sedona Tan



Adobe Buff



Aztec Gold



Sand Buff



Rose Pink



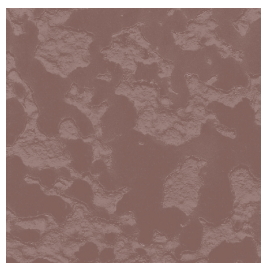
Coral Peach



Aqua



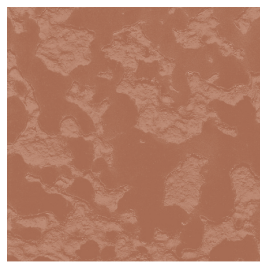
Birch Grey



Mauve



T5



Terra Cotta

All colors shown are
approximate

By the nature of their pigment, darker colors are warmer than lighter Kool Deck Elite colors.

Mortex Manufacturing Co., Inc.
1818 W. Price Street
Tucson, AZ 85705-2217
USA

Toll-Free: 800.338.3225
Phone: 520.887.2631
Fax: 520.293.8884



www.mortex.com

For over 45 years, Mortex™ has been the contractor's choice for innovative and superior quality products. In 1962, Mortex revolutionized the swimming pool industry with the introduction of our Keystone Kool Deck product, that literally changed the face of swimming pool decks forever. Since then, Mortex has continued to set the industry standards for product innovation, quality and customer service.

Mortex, Kool Deck, Keystone Kool Deck, Kool Deck Elite and Designer Color Collection are trademarks or registered trademarks of Mortex Manufacturing Co., Inc.

© Copyright 2005 - All Rights Reserved, Mortex Manufacturing Company Inc.