

Product: \_\_\_\_\_

Type: \_\_\_\_\_

Project: \_\_\_\_\_

## BSB060 Straight Bullet

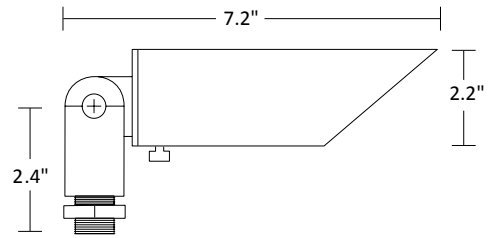
Architectural Aluminum

### Fixture Ordering Guide

Product Code	Finish
BSB060	TB - Textured Black
	TZ - Textured Bronze

Order Lamp Separately

Example: BSB060-TZ-MR16BAB/827/LED



### Shroud:

- Textured Black or Textured Bronze
- UV resistant powder coat protects the finish from salt-spray induced corrosion
- Brass slotted thumb screw for easy, tool-free lamp replacement

### Housing:

- Architectural-grade die cast aluminum base, knuckle and shroud
- Fully adjustable swivel arm with locking teeth maintains desired angles
- Two silicone o-rings provide a low-friction, watertight seal
- Gasketed knuckle to prevent water intrusion

### Lens:

- Shock and heat-resistant clear, tempered glass

### Socket:

- Ceramic GU5.3 bi-pin socket
- Stainless steel retention clip ensures secure lamp seating and protects the lamp from shock and vibration
- Heat-resistant wire leads

### Lamp:

- MR16 – 50W maximum
- ProLED® MR16 lamps offer 40,000 hour rated life, 10-15V input voltage range, multiple beam spreads (flood, narrow flood, spot and wide flood) and 2700K, amber, blue, green, red and color changing options

### Mounting:

- 8" black ground stake included

### Electrical:

- 12 Volt system
- Pre-wired with 36", 18-2 lead wire
- Two King® DryConn™ waterproof connectors included

### Certifications:

- ETL Listed to UL Standard 1838 and CSA C22.2 No. 250.7

### Fasteners:

- All fasteners are corrosion-resistant stainless steel

### Warranty:

- Backed by a 5-year limited warranty to be free from defects in material and/or workmanship
- ProLED® MR16 lamps installed in Sollos fixtures per installation instructions are backed by a 20-year limited warranty

### Photometrics:

