

HERITAGE COLLECTION

MARINA™

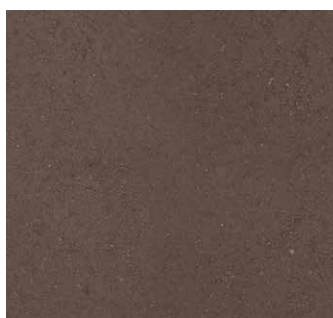
COPING | 60MM



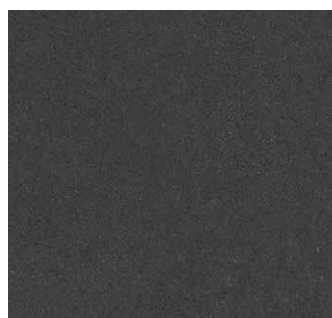
The smooth surface texture and refined, rounded edges make this bullnose coping a classic finishing touch to enhance pools and a variety of outdoor features.



ALPINE
Swatch represents product color only



BOURBON



MIDNIGHT



NORVICK



OSSABAW
Swatch represents product color only

Due to the natural materials in our products, colors may vary from those shown on the cut sheet. We recommend viewing actual product samples to ensure the perfect color and finish for each project.



QUALITY FOR LIFE

Every step of our manufacturing process incorporates rigorous research, testing and quality assurance. We demand the highest quality from each of our facilities across North America. We believe in creating world class building products that stand the test of time. See our lifetime warranty at [Belgard.com/Warranty](https://www.belgard.com/Warranty)

FEATURES & BENEFITS

- Classic smooth-face bullnose aesthetic
- Rounded edges protect feet and hands when getting out of a pool or going up and down steps.
- Offers a stylish, textured edge to blend seamlessly with patios.
- Helps pool or spa hold its shape by keeping walls straight and rigid, and protects surrounding area from water damage.
- Can be used to provide a finishing touch to steps, planters, walkways, and terraced patios

SHAPES & SIZES

60MM



6 x 12 x 2 3/8

PALLET INFORMATION

MARINA™ COPING		LNFT/ PALLET	LNFT/ LAYER	LAYER/ PALLET	UNITS/ PALLET	WEIGHT/ PALLET
60MM	6 x 12 x 2 3/8	-	-	5	168	2234

Downloadable professional resources available at [Belgard.com/Resources](https://www.belgard.com/Resources)

View the product page on [Belgard.com](https://www.belgard.com) for more information



LEARN MORE

BELGARD® | PAVES
THE WAY™

AN OLDCASTLE® APG OUTDOOR BRAND

CLARKSVILLE
4235 Guthrie Highway
Clarksville, TN 37040
Ph: 931-647-3308

ROCKWOOD
600 Cardiff Valley Road
Rockwood, TN 37854
Ph: 888-624-3088

© 2025 Oldcastle® APG, Inc. All Rights Reserved. BEL24-D-322471 | GMS Mid-South | Revised 01/2025