

Part No.	Trade Size	A (in)	B (in)	C (in)	D (in)	E (in)	F (in)	G (in)
SE1-50	1/2"	0.35	0.32	0.065	0.837	1.2	0.55	0.25
SE1-75	3/4"	0.46	0.425	0.065	0.94	1.3	0.625	0.25
SE1-100	1"	0.56	0.55	0.065	1.15	1.515	0.74	0.312
SE1-125	1-1/4"	0.75	0.715	0.071	1.465	1.95	0.86	0.32
SE1-150	1-1/2"	0.87	0.825	0.079	1.687	2.12	0.87	0.32
SE1-200	2"	1.1	1.05	0.094	2	2.625	1.1	0.39

orbit

DISCLAIMER
 THIS DATA SHEET IS FOR REFERENCE ONLY.
 ORBIT INDUSTRIES INC RESERVES THE RIGHT
 TO MAKE CHANGES TO THE DESIGN
 WITHOUT PRIOR NOTICE

PROPRIETARY AND CONFIDENTIAL
 THE INFORMATION CONTAINED IN THIS
 DRAWING IS THE SOLE PROPERTY OF ORBIT
 INDUSTRIES INC
 ANY REPRODUCTION IN PART OR AS A
 WHOLE WITHOUT THE WRITTEN PERMISSION
 OF ORBIT INDUSTRIES INC IS PROHIBITED.

Orbit Industries, Inc.

TITLE:

**STAMPED STEEL 1-HOLE EMT
 STRAPS (1/2"~2")**

DWG. NO.

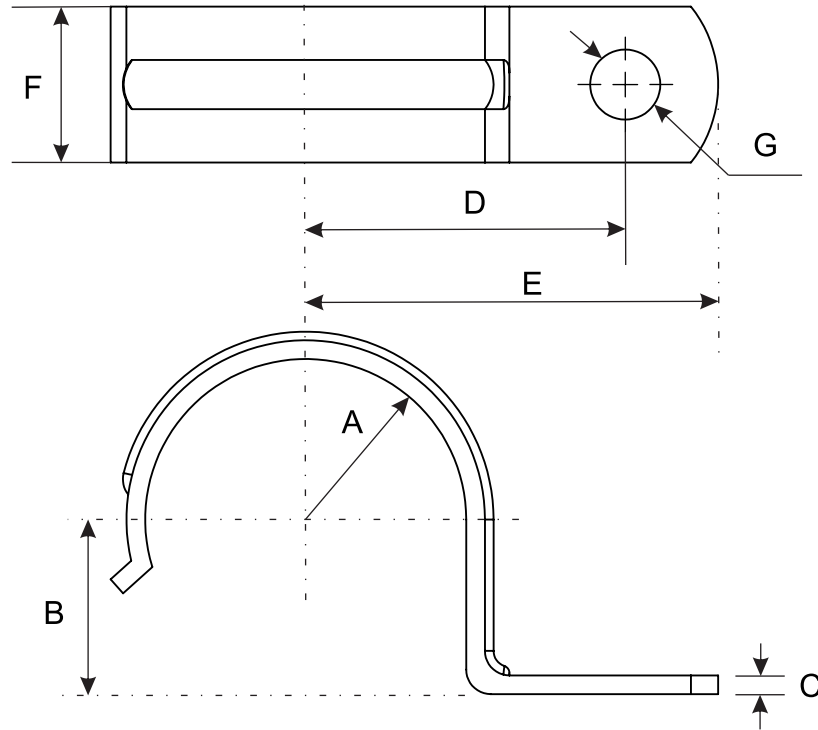
D0123LD1

REV

A

DO NOT SCALE THE DRAWING

SY



Part No.	Trade Size	A (in)	B (in)	C (in)	D (in)	E (in)	F (in)	G (in)
SU1-250	2-1/2"	1.437	1.4	0.15	2.562	3.312	1.25	0.562
SU1-300	3"	1.75	1.7	0.15	2.88	3.625	1.25	0.562
SU1-350	3-1/2"	2	1.95	0.165	3.25	4	1.25	0.562
SU1-400	4"	2.25	2.2	0.165	3.5	4.25	1.25	0.562



Orbit Industries, Inc.

DISCLAIMER

THIS DATA SHEET IS FOR REFERENCE ONLY. ORBIT INDUSTRIES INC RESERVES THE RIGHT TO MAKE CHANGES TO THE DESIGN WITHOUT PRIOR NOTICE

PROPRIETARY AND CONFIDENTIAL

THE INFORMATION CONTAINED IN THIS DRAWING IS THE SOLE PROPERTY OF ORBIT INDUSTRIES INC. ANY REPRODUCTION IN PART OR AS A WHOLE WITHOUT THE WRITTEN PERMISSION OF ORBIT INDUSTRIES INC IS PROHIBITED.

TITLE:

STAMPED STEEL 1-HOLE EMT AND RIGID STRAPS (2-1/2"~4")

DWG. NO.

D0123LD2

REV

A

DO NOT SCALE THE DRAWING

SY