

We make it strong. We make it easy.™
COVERSTAR®

Mesh and Solid Safety Pool Covers



*We make our
covers stronger...
to keep your
family safer!*

LATHAM®
behind every pool

Coverstar – the strongest name in swimming pool safety covers!

A Coverstar mesh or solid safety cover is the strongest way to prevent children and pets from getting into your pool when you can't be there. Custom-built to fit your pool perfectly and manufactured from best-in-class materials, a Coverstar cover is the best protection available for your family and your pool investment!

We make it strong...to keep your family safe!

The stronger the cover, the safer the cover. Coverstar applies exclusive, patented design and manufacturing innovations to give our mesh and solid safety covers unmatched strength and durability.

We make it easy...to install and maintain.

Unique features such as our exclusive center web and extra-long installation tool make it fast and easy to install and remove your Coverstar cover. All Coverstar covers keep debris out of your pool, and block virtually all sunlight – so you save on chemicals and enjoy cleaner water at opening time.

**A Coverstar safety cover eliminates this ugly, dangerous mess from your backyard!
(Did you really want to drain and clean that?)**



Ovals, kidneys, even pools with custom shapes, raised walls, stairs, rails or water features – we'll create a Coverstar cover that will cover any pool beautifully...and safely!



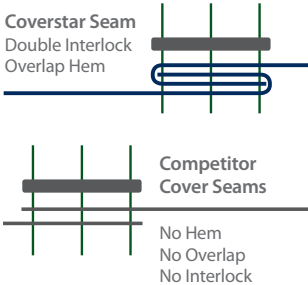
**Auto and SAM –
the Coverstar team!**

Protecting your family
with the best-built Solid,
Mesh, and Automatic
Safety Covers!

So many reasons why a Coverstar cover is your safest choice.

Interlocking Seams for Extra Strength!

A safety cover is only as strong as its seams, potentially its weakest point. **Only Coverstar uses interlocked and double overlapped seams** to dramatically improve weight transfer from the cover material to the seams and webbing! There's simply nothing stronger!



UV Resistant Thread

Our extra-durable thread resists sun damage and pool chemicals.



Double Reinforcement

To provide additional strength for high-stress areas, we use bar and box tack reinforcement on all perimeter straps – **a Coverstar exclusive!**



Custom Heavy-Duty Hardware

As an option, lower profile heavy-duty stainless steel springs with overlap D-rings ensure your cover lies flat to the deck and fits tight for optimum safety. Custom brass anchors provide the ultimate strength and durability.

Double Decker Edge

The perimeter of most covers can fray and unravel. Our cover material is first hemmed, then sandwiched between double layers of webbing around the perimeter, so the edge can't unravel!

Less Wear and Tear

Heavy duty vinyl nosing pads protect the cover against wear from coping and steps.



Webbing Won't Abrade

Chafing strip sewn to bottom of cover protects the cover webbing from coping abrasion wear – and won't mark the coping, like other strips!



All Coverstar mesh and solid safety covers exceed ASTM standards when properly installed.





So many NEW reasons why to buy a Coverstar cover.

New Products

SS Flush Wall Anchor

The SS flush wall anchor is pushed in and tightened after the cover is removed. This provides a clean look as the anchor head remains flush with the raised wall.



Snap-On Perimeter Padding

The Snap-On Perimeter Padding can be installed in specific locations to protect the cover from chaffing damage. The padding easily snaps onto the webbing and can be cut to size as needed.



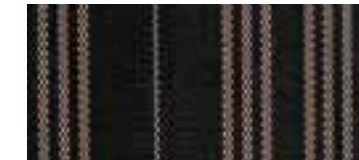
The right cover to fit your needs. . . and perfectly fit your pool!

Coverstar offers mesh covers for maximum drainage and solid covers that block 100% of sunlight – in a variety of material weights and colors. All can be custom designed to fit any size or shape pool precisely, including any special features such as raised walls, diving boards, stairs and rails.

Mesh Safety Covers

9000MX™ Max Shade Mesh*

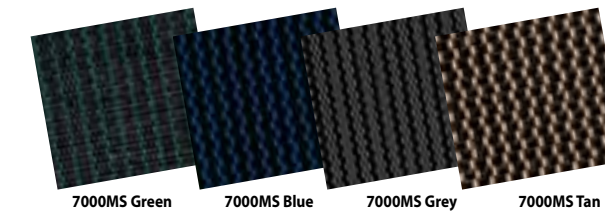
- 99% shade, 7.9 oz weight – 25 year warranty
- Engineered for maximum protection
- Allows water through for drainage and safety while keeping sunlight and debris out
- Available in our Exclusive 9000MX design



9000MX Exclusive Design

7000MS™ High Shade Mesh*

- 99% shade, 7 oz weight – 20 year warranty
- Easy installation ultra-fine weave mesh
- Allows water through for drainage and safety
- Available in green, blue, grey and tan



7000MS Green

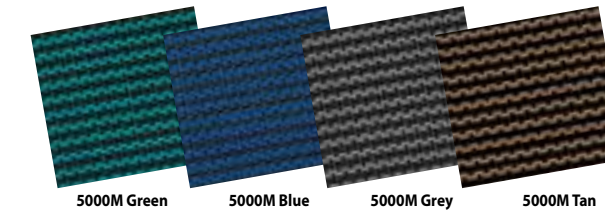
7000MS Blue

7000MS Grey

7000MS Tan

5000M™ Standard Shade Mesh

- 91% shade, 4.5oz weight – 15 year warranty
- The highest abrasion resistance and tear strength in its class
- Allows water through for drainage and safety
- Available in green, blue, grey and tan



5000M Green

5000M Blue

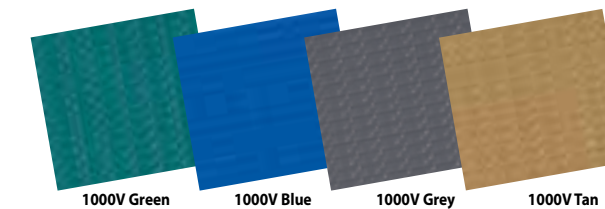
5000M Grey

5000M Tan

Solid Safety Covers

1000V™ Heavy Duty Solid Vinyl

- 100% sunblock, 12 oz weight – 15 year warranty
- Keeps out all debris and sunlight
- Manufactured with single springs only
- Available in green, blue, grey and tan



1000V Green

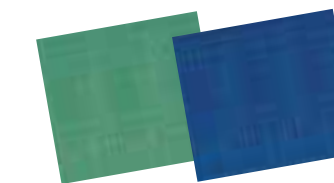
1000V Blue

1000V Grey

1000V Tan

500P™ Lite Duty Solid Vinyl

- 100% sunblock, 7 oz weight – 12 year warranty
- High-end construction and features
- Light weight material is easy to handle
- Available in green and blue



500P Green

500P Blue

* 9000MX and 7000MS Mesh U.S. Patent No. 6,886,187 – 99% Shade

The professional Coverstar team will help you select a cover with the performance and features that best meet your needs!



Thinking automatic?

Coverstar also manufactures the world's best-built automatic safety covers, with push-button convenience. For more information, contact your Coverstar dealer or call us at 800-617-7283.



Let the Coverstar team keep your family safe!

To find out more about Coverstar ultimate quality Mesh, Solid, and Automatic Safety Swimming Pool Covers, please visit coverstar.com or call 800-617-7283.



We make it strong. We make it easy.™
COVERSTAR®



787 Watervliet Shaker Road, Latham, New York 12110 • 800-833-3800 • lathampool.com
1231 Kamato Road • Mississauga, Ontario, L4W 2M2 • 800-832-6664 • lathampool.ca
800-617-7283 | coverstar.com