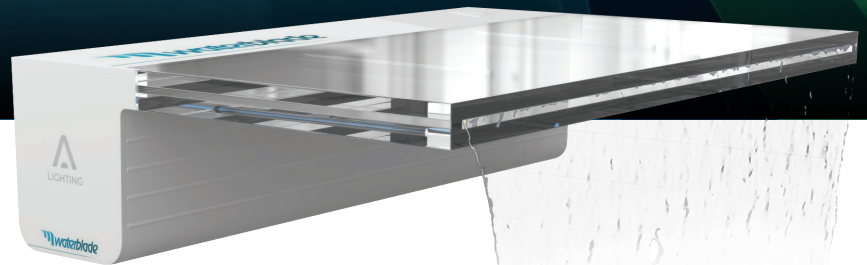


# waterblade

## Smooth flow, with an EvenGlow



- ↳ WaterBlade
- ↳ WaterBlade LIT
- ↳ WaterBlade RAIN
- ↳ WaterBlade RAIN & LIT

Transform your pool or water feature with a smooth, tranquil waterfall. Available in multiple lengths with rear or bottom-feed options, and optional multi-colour LED strips or a rain insert for a stunning, dynamic water display.

- Rear-feed and Bottom-feed options
- Optional rainstrip insert
- Upgrade - multi-coloured diffused strip
- Low Voltage – 24V DC
- Seamlessly integrates with any pool or smart-home automation system.



Remote Control



Limitless RGB Color Options



Dimmability Control



Color Memory



APP Control



Wi-Fi Compatible



Set your Schedule



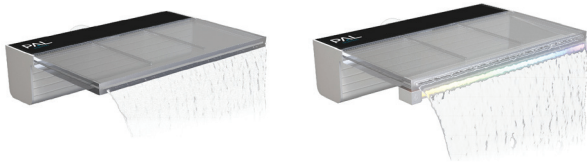
Zone-by-Zone Control



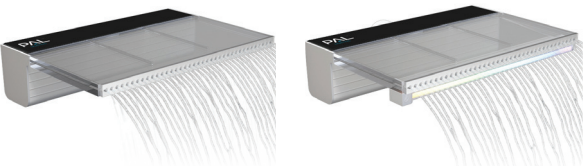
Music Sync

### Waterflow & LED Options

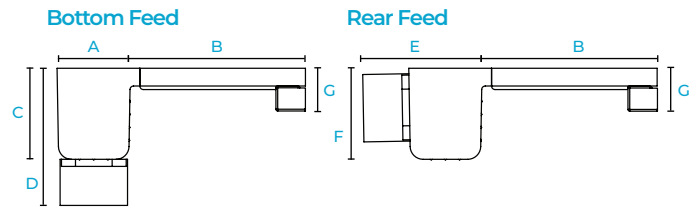
#### WaterBlade | WaterBlade LIT



#### WaterBlade RAIN | WaterBlade RAIN LIT

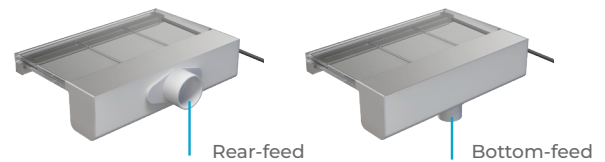


### WaterBlade Sizes



A: 2.46" B: 5.90"  
 C: 3.03" D: 4.57" E: 3.94" F: 3.03" G: 1.36"  
 Lengths (ft): 1' / 1' 6" / 2' / 3' / 4' / 5'

### Water Feed



### LIP Extension

5.90"



### Control

- Colour Touch technology with OEM cloning via Hayward, Jandy & Pentair Automation systems.
- Integrate seamlessly with smart-home automation systems.
- Control via Remote Handset or APP through smart devices.
- Colour wheel control for instant and dynamic touch control
- Brightness control on PAL mode only.

### Driver

WiFi/RF | Low Voltage 24V DC | IP65 | UL Listed

### WaterBlade Options

PRODUCT SERIES	WATERBLADE LENGTH (FT)	LIP DEPTH (Inches)	WATER ENTRY
64-EFWB (Waterblade only)	1' / 1' 6" / 2' / 3' / 4' / 5'	5.90"	Rear-feed / Bottom-feed
64-EFWBL (Waterblade with light)			
64-EFWB-RN (Waterblade rainfitting)			
64-EFWBL-RN (Waterblade rainfitting with light)			

### Control & Driver Compatibility Guide (using a lit WaterBlade only and not in combination with other pool lights)

Driver Series	REMOTE & WiFi (APP) CONTROL	
	PCR-1ZW-16	PCR-1ZW-65
Driver Power Rating (w)	16w	65w
WaterBlade Length (ft)	1' to 3'	up to 5'

For driver information when combining pool lights and lit water features, please contact a PAL Lighting representative.



Connect and sync your pool, water features and landscape lights together in 1 smart yard system.

- Endless Colour Spectrum | Customisable Brightness
- Integrated Music Sync | Standalone App Control or Pairs with Automation

