

PROLINE DURA COLORS

COLOR HARDENER // ANTIQUE RELEASE // EZ-TIQUE

www.prolinestamps.com



proline
decorative concrete
systems

PROLINE DURA COLORS

ALL COLORS AVAILABLE IN THESE THREE PRODUCTS:

COLOR HARDENER (CH) // ANTIQUE RELEASE (AR) // EZ-TIQUE (TQ)



OCEANSIDE
612



NAVAJO
606



SUEDE
608



ESPRESSO
622



MOJAVE
605



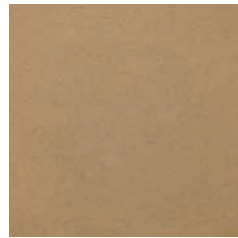
SOFT GRAY
613



SAGE
607



SAND CANYON
603



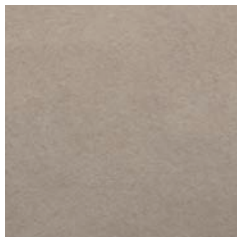
EL PASO
625



MOCHA
610



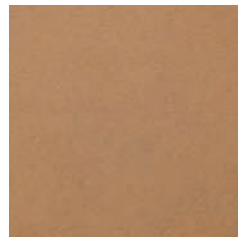
ROCK GRAY
614



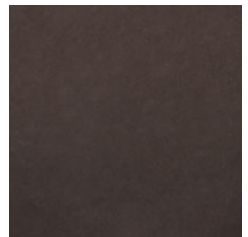
ASHEVILLE SLATE
647



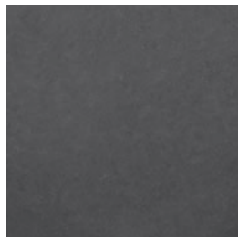
SYCAMORE
604



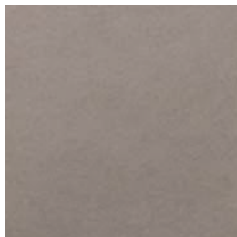
PECAN
643



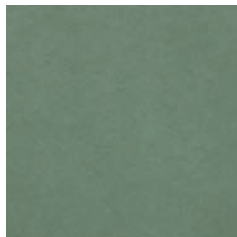
WALNUT
641



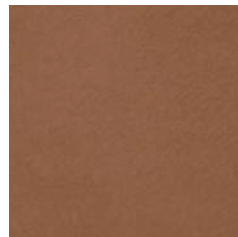
MIDNIGHT GRAY
615



SANTA FE
609



JADE
618

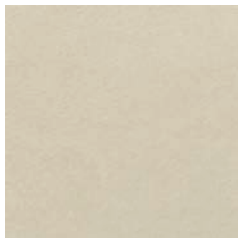


TERRA COTTA
629



JAVA
635

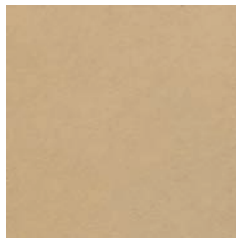
With over 40 standard designer colors, Proline's DURA COLOR HARDENER, DURA COLOR ANTIQUE RELEASE and EZ-TIQUE will give you the beautiful results you're looking for. With the addition of Proline's high quality life-like texturing tools and accessories, you are sure to create the most realistic floors and hardscapes imaginable.



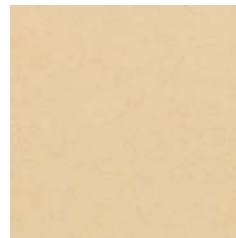
ADOBE BEIGE
602



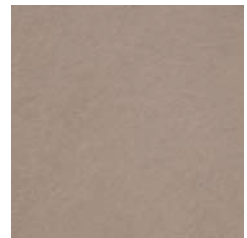
CREAM BUFF
601



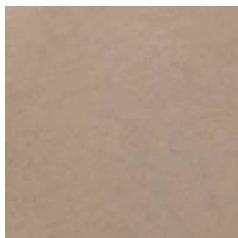
ARIZONA BUFF
623



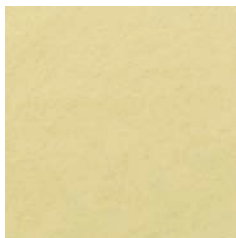
COCONUT CREME
621



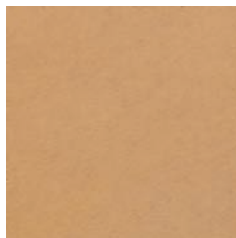
MISSION BEIGE
631



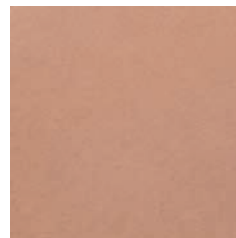
BEIGE CREME
650



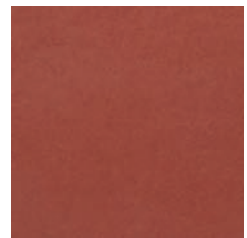
SUMMER SAND
645



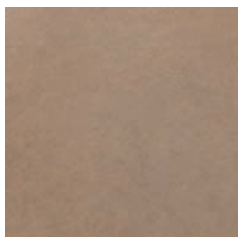
LIGHT COPPER
642



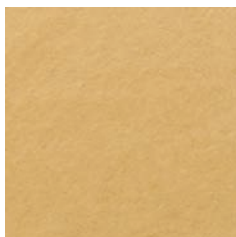
CHEYENNE
624



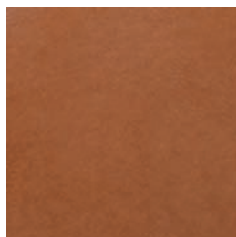
KILN RED
637



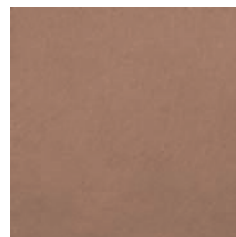
SADDLE SOAP
632



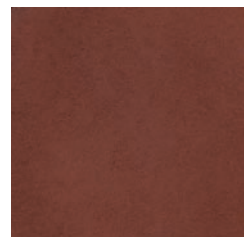
AVALON
646



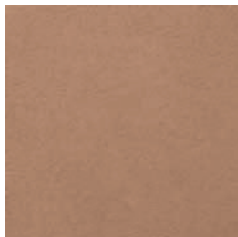
GEORGIA CLAY
628



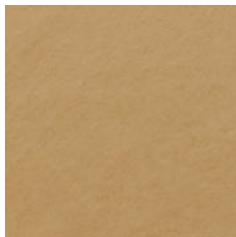
ROSEWOOD
633



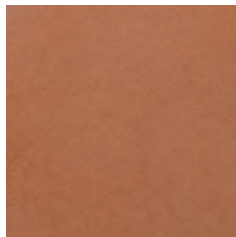
RED BRICK
640



BONSALL BEIGE
627



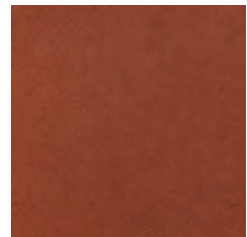
BUCKWHEAT
644



SALTILLO TILE
649



PUEBLO
630



TILE RED
638

*Also available in WHITE (800) and BLACK (700)

The colors shown are approximate, and as close as possible, to represent concrete with flat trowel finish and sealed with Dura Seal HG Sealer, Proline Dura Products is not responsible for application methods, finishing techniques, job site conditions, curing methods, and other conditions and therefore cannot guarantee an exact match. Various texturing and finishing techniques such as troweling or brooming, the use of sealers, and color variations in raw materials can produce variations in colors. Proline Dura Products highly recommends a representative job sample be done for each product.



PROLINE DURA COLOR HARDENER (CH)

BENEFITS:

- Formulated with only quality ingredients for a denser, more durable surface
- The denser surface picks up even more detail from the texture mat
- Made with stable, U.V. resistant, alkali-friendly, iron oxide pigments
- Blended in a carefully monitored process for maximum consistency

DESCRIPTION:

PROLINE DURA COLOR HARDENER is a colored dry-shake hardener that is broadcast by hand over the top of freshly placed concrete and worked in with a wood float to form a dense, colored concrete 'skin' on the slab surface. Dry-shake color hardener is best applied to a concrete slab containing no more than a 4 inch slump and between a 5 and 6 sack per cubic yard cement content. This product is compatible with most admixtures, but avoid those containing calcium chloride. Apply PROLINE DURA COLOR HARDENER shortly after screeding and floating the new concrete just as the bleed water is coming to the slab surface. It should be broadcast by hand as uniformly as possible and then worked in with a wood float. Start with the edges first then work in toward the middle when broadcasting and floating. Most colors will go on with two shakes, or coats, followed by touch up but lighter colors may require three shakes. If the surface is to be textured, then a light troweling is recommended. Over-trowling will discolor the concrete. For a textured 'antique' look, a light hardener color should be paired with a darker PROLINE DURA ANTIQUE RELEASE and PROLINE TEXTURE MATS for stamping. It is always recommended that a representative job site sample be done to test the look of the color and texture combinations.

COVERAGE:

One 60 pound bucket of PROLINE DURA COLOR HARDENER covers about 100 square feet, but lighter colors may require a rate of 100 pounds per 100 square feet.

CURING:

Non-staining acrylic, wax curing compound, or sealer is recommended. Do not cure with plastic sheeting, membrane paper, or water misting. Avoid sodium silicone type hardeners. Products not recommended could cause discoloration or mottling of the colored surface. Allow the concrete to cure for 28 days before sealing.

PROLINE DURA ANTIQUE RELEASE (AR)

BENEFITS:

- Easy to use powder with stamp release capabilities
- Colored to enhance any decorative concrete surface
- Made with stable, U.V. resistant, streak-free, iron oxide pigments
- 40 standard colors are available, with custom colors matched to order

DESCRIPTION:

PROLINE DURA ANTIQUE RELEASE is used as a bond breaker in the stamping process. It is a dust-on powder with water repellent properties that helps prevent wet concrete from adhering to the polyurethane texture mat. PROLINE DURA ANTIQUE RELEASE is also used as a coloring agent, leaving a portion of the color, usually darker than the concrete color, imbedded in the low points of the newly textured concrete. This product should be broadcast in thin, even coats that overlap just enough to produce a uniform layer on the slab surface. Release powder can be thrown by hand or with a 6" mason's brush. Stamping can begin as soon as the release agent is applied. Allow concrete to cure for at least 24 hours before removal to prevent damage to the brand new surface. Removal is accomplished by brushing then rinsing with a garden hose spray nozzle, light pressure wash, scrubbing, or buffing. Remove only enough to achieve desired antique effect. Final color that matches the color chart can only be seen by sealing with a quality concrete sealer such as PROLINE High Gloss Dura-Seal.

COVERAGE:

One 30 pound bucket of PROLINE DURA ANTIQUE RELEASE covers approximately 1000 square feet. The rate may vary slightly, but will be in the range of 3 to 4 pounds per 100 square feet.

PROLINE DURA EZ-TIQUE ANTIQUE COLOR WASH (TQ)

BENEFITS:

- No power washing
- Less mess, less clean-up time
- More control of the antiquing process
- Use multiple colors for more natural look

DESCRIPTION:

PROLINE DURACOLOR EZ-TIQUE ANTIQUING WASH is a versatile coloring agent that can be easily applied and, like powder release, is bonded to the surface when sealed. It is sold as a powder but is designed to be mixed with water and applied as a liquid wash coat. EZ-TIQUE can be used to revitalize a weathered concrete surface or add an antique color to a freshly textured surface. It goes on quickly with greater control of the coloring process. This product is water based, non-hazardous, and zero V.O.C. Use between one and three scoops per one gallon of water, depending on desired effect. The product, once mixed, needs to be agitated during application. Before applying to unsealed concrete, it is helpful to pre-moisten the surface with water so the liquid color will have time to even out and settle properly. EZ-TIQUE can be spread quickly with a clean push broom. EZ-TIQUE can be cleaned up readily with water.

COVERAGE:

One 3 pound pail of PROLINE DURA EZ-TIQUE covers about 2000-3000 square feet.

SEALING AND MAINTENANCE: A quality Proline sealer is recommended to protect the newly textured or colored concrete surface. The concrete must be cleaned and thoroughly dried prior to application. Inspect annually for areas of thin or traffic-worn sealer and reapply as necessary.

WARRANTY: These products are not intended for public use and are intended for use by licensed contractors and installers who are experienced and trained in the use of these products. It is warranted to be of uniform quality within manufacturing tolerances. Since the manufacturer has no control over the use of this product, no warranty, expressed or implied, is made either as to the effects or results of

such use. Seller and manufacturer obligations under this warranty shall be limited to refunding the purchase price of that portion of the material proven to be defective. The user assumes all risks and liabilities resulting from use of this product.

CAUTIONS: KEEP OUT OF REACH OF CHILDREN!!! Before using or handling, read the Material Safety Data Sheet (msds) and Warranty. Do not take internally. Avoid contact with skin and eyes. Use only with a NIOSH approved respirator when using these products.

The information on this page is abbreviated and taken from

Proline's Technical Data Sheet and Material Safety Data Sheet. Please read the appropriate references for each product before attempting to use.

Proline Dura Color Hardener, Antique Release Agent, are available in 40 standard colors and custom colors. Color matching services are also available. This color chart is a representative only and does not guarantee that the final color will be an exact match. Texturing or finishing techniques such as brooming or troweling, the use of sealers, and slight color drifts in raw materials will produce variations of the colors. Proline recommends a representative job sample for each product.