



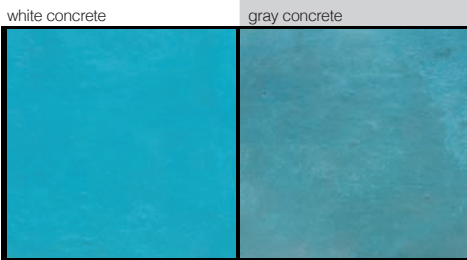
proline

decorative concrete
systems

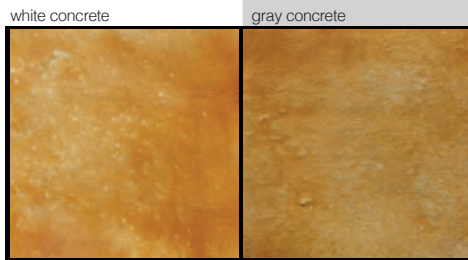
DURA-STAIN

CONCRETE CHEMICAL ACID STAIN

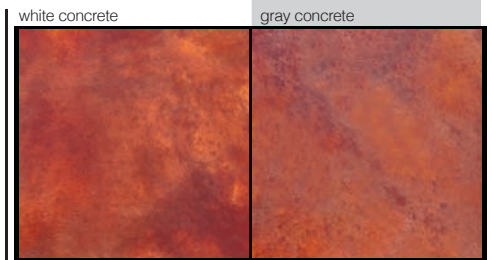
(Colors show Dura-Stain over white concrete and Dura-Stain over gray concrete)



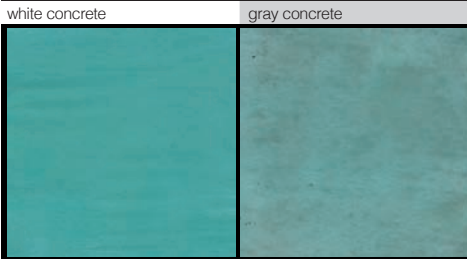
Aqua Blue // PS-570



Amber // PS-300



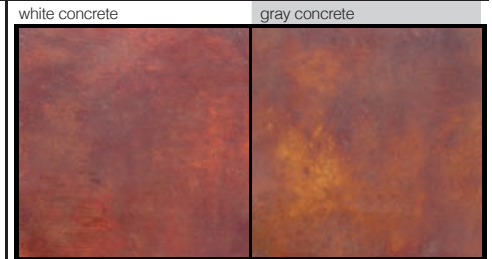
Redwood // PS-490



Patina // PS-500



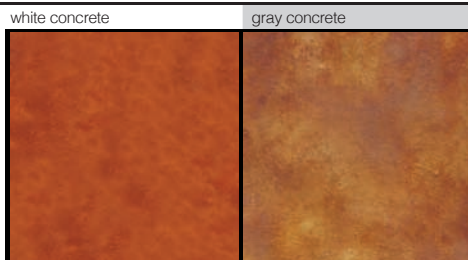
Oak // PS-320



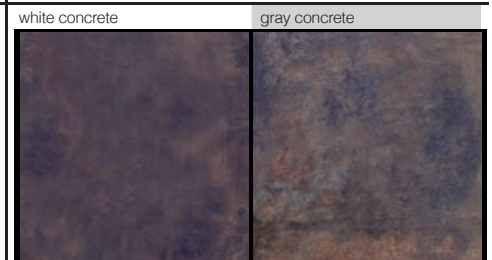
Western Brown // PS-420



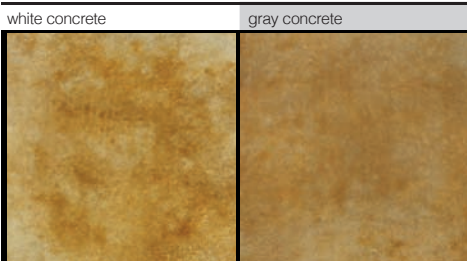
Sea Green // PS-385



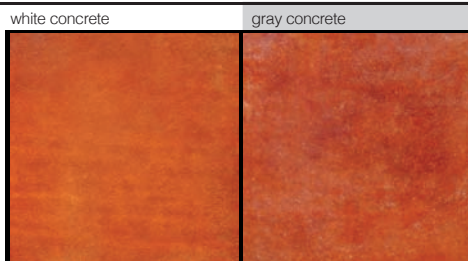
Coffee // PS-400



Leather // PS-480



Sahara // PS-335



Terracotta // PS-408



Midnight Black // PS-800

This color guide is designed to show a representation of Proline Dura-Stain Acid Stains when applied to natural gray concrete or white overlayment. It does not guarantee that the final color will be an exact match. Color effects produced will vary when applied over stampable overlays, microtoppings and integrally pigmented substrates, and may differ from colors shown on chart. Colors produced will rely heavily on skill, practice and experimentation as each concrete slab will react differently. Application methods and age of the concrete will result in different tones or hues and in the case of very old concrete, the stain may have little or no reaction. Test sections should be done to verify the suitability and appearance prior to general application.