

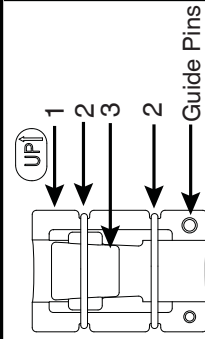


Johnny Hinge Installation and Operation Guide

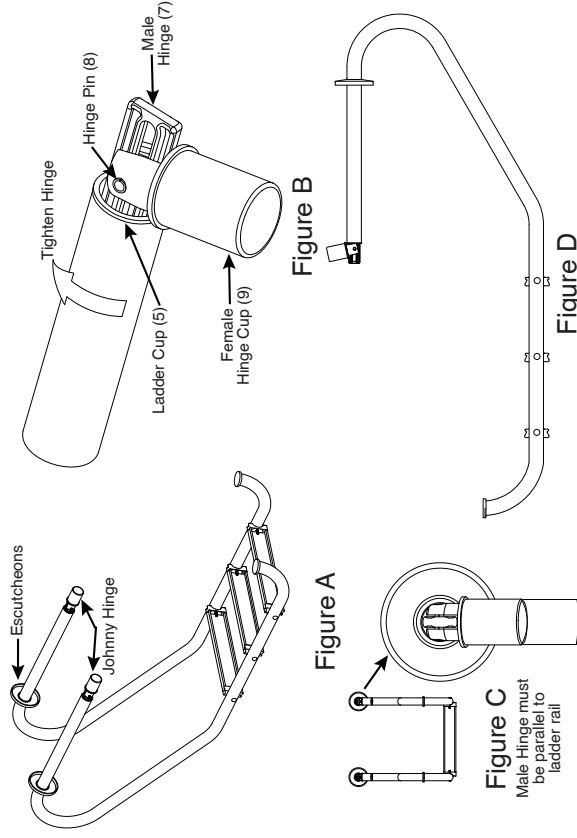
Part No.
JH-0019-B



Installation



1. Lay the pool ladder flat on the deck with the two rails in a horizontal position. Install the escutcheon plates on the ladder rails and push them away from the end of the rail. See Figure A.
2. Insert the Johnny Hinge assembly into the end of the rail. Make sure the Ladder Cup (6) nests firmly against the end of the rail. See Figure B. Tighten the hinge by turning it in a clockwise direction. Using only the Female Hinge Cup (9) for leverage, tighten the Johnny Hinge until it is snug (about 8 turns). Do not use any tools to increase your leverage. Do not overtighten.
3. Square the hinge. The Male Hinge (7) must be parallel to the ladder rail. Tighten another 1/2 turn or more to square the hinge. See Figure C & D. An adjustable wrench can be used, if necessary, to square the hinge. Squaring the hinge will provide smooth operation when the ladder is installed on the pool. **Caution.....do not loosen the hinge to make it square. Loosening the hinge will result in improper operation of the Johnny Hinge.**
4. Install the second hinge on the other ladder rail.
5. Now install the Female Hinge Cups (9) into the ladder anchors in the pool deck. Make sure the lip on the Female Hinge Cup (9) rests firmly on the deck anchor. Tighten the deck anchor until the hinge is secure.



Assembly

Prior to Assembly

Remove 2 O-Rings (2) from the Ladder Grip Assembly and pull the assembly apart. Remove the Ladder Grip Nut (3) from the Male Hinge Stud (7).

1. Install 2 Nylon Slip Washers (6), 1 Rubber Washer (4), 1 Ladder Cup (5), and 3 Rubber Washers (6) on the Male Hinge Threaded Stud (7) making sure they seat firmly at the base of the stud.

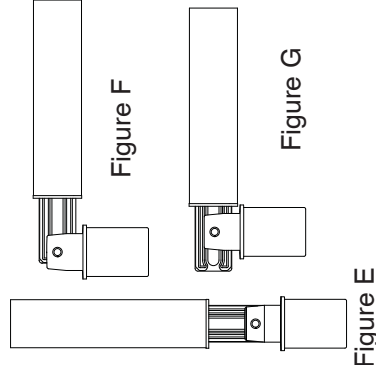
IMPORTANT: All rubber washers and nylon washers must be installed exactly as shown for the Johnny Hinge to work properly.

2. Turn the Ladder Grip Nut (3) exactly 11 full turns (important) onto the Male Hinge Stud (7). Make sure the large diameter of the nut is in the (UPI) position.
3. Place the Male Hinge (7) and Nut into the upper portion of one of the pipe inserts (1) as shown in the illustration.
4. Assemble the other pipe insert (1) using the Guide Pins for proper alignment.
5. Reinstall the O-Rings (2) on the Ladder Grip Assembly.
6. Do not loosen or tighten the Johnny Hinge prior to installing it on the pool ladder.

1. Pipe Insert
2. O-Ring
3. Grip Nut
4. Rubber Washer
5. Ladder Cup
6. Nylon Washer
7. Male Hinge (Threaded)
8. Hinge Pin
9. Female Hinge Cup

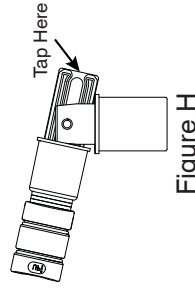
Operation

1. Lift the escutcheons up the rail until they are out of the way.
2. Lift the ladder in the vertical direction until the Male Hinge (7) bottoms out on the Hinge Pin (8). See Figure E.
3. Rotate the ladder until it is in the horizontal position. See Figure F.
4. Push the ladder toward the pool until the ladder rail contacts the Female Hinge Cup (9). See Figure G.
5. The Male Hinge (7) will act as a stop, holding the ladder in the horizontal position.
6. **Caution.....do not lean on the ladder or subject the ladder to any loads while it is in the horizontal position. This will result in a bent ladder rail and possibly damage the Johnny Hinge.**



Removal

1. Loosen the Johnny Hinge by turning it counter clockwise 12 full turns.
2. Using a small hammer, lightly tap on the end of the Male Hinge (7) until the Ladder Grip Nut (3) moves from its wedged position. See Figure H.
3. The Johnny Hinge should now slip out of the ladder. If not, try loosening the hinge 2 more turns and tap on the end of the hinge as described in Installation Step 2.



Perma-Cast Co. Pueblo, CO
www.permacastonline.com
Call 800-748-2770