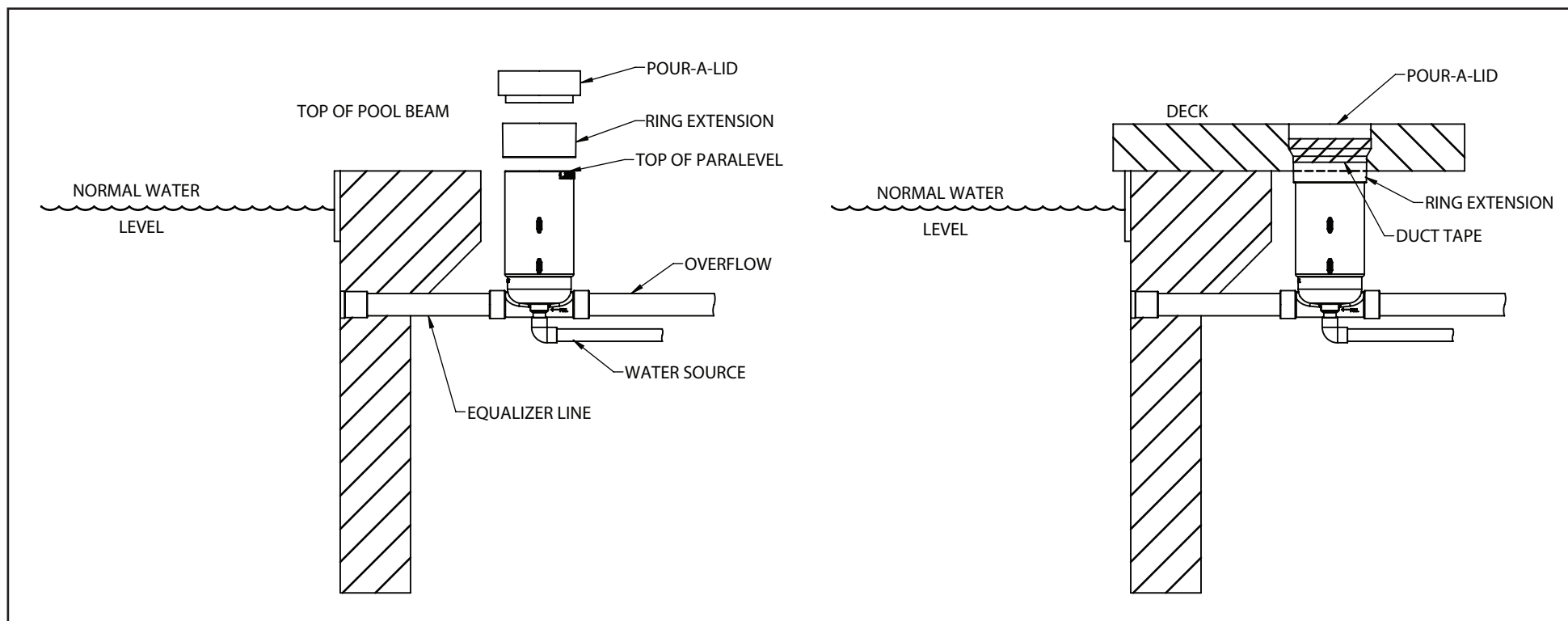


PARALEVEL POUR-A-LID INSTRUCTIONS



The Paramount Paralevel Pour-A-Lid will accept decks with a thickness of 2 and 3/4 inches up to 4 and 1/2 inches.

- Step 1.** The Pour-A-Lid comes with a ring extension. This extension fits on the outside of the Pour-A-Lid's deck ring bottom flange, and slips over the outside of the Paralevel. Place the Pour-A-Lid's Paramount extension together. Using Duct Tape secure the extension ring on the outside of the Paralevel so the Pour-A-Lid ring top is even with the top of what will be the finished deck height. Pour some concrete around the deck ring and extension first so it will be secure when pouring the rest of the deck.
- Step 2.** Pour the concrete deck and fill the inside of the Pour-A-Lid with concrete, leaving room for the deck finish material if other than a salt or natural finish is going to be used.
- Step 3.** Finish the top of the deck and the concrete in the Pour-A-Lid with the topping of your choice.

For technical assistance call 1.800.621.5886 or contact your regional representative