

COPING BULLNOSE 60MM

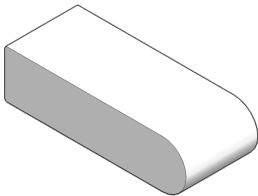
PRODUCT NUMBER # 301



- Smooth and rounded surfaces are ideal for bare feet
- Designed to be installed with 3/8in mortar joints
- Vehicular and pedestrian applications
- Made of durable concrete with iron oxide pigments that resist fading in extended UV exposure.

Concrete coping is the perfect complement to new and overlay pool deck applications and is available in a variety of paver shapes to match common paver heights. Made with the same materials and manufacturing process, the resulting texture and color match make concrete coping the best choice for seamless poolside aesthetics. Some shapes are suitable for Rumbling, which weathers the stones by breaking and softening paver edges and corners.

STONE(S)



Coping		
Height	in	2.36
	mm	60
Length	in	9
	mm	228.6
Width	in	3.54
	mm	90
Units	/pl	300

PALLET LAYOUT



NOTES

Weights are approximate and do not include shipping pallet.

PALLET SPECS

Pallet Weight	1440 lbs
Sq Ft/Pallet	87.5 sq.ft.