

HI DELTA®

Simple design, reliable performance.

300 MBTUH - 2.3 MMBTUH

- H** 84% Efficiency
- WH** 83.1-85% Efficiency
- P** 83.1% Efficiency³



Click icon or view standalone page to learn more.



MID EFFICIENCY



Reliable Performance

- Simple multi-stage operation and fixed blower motors for reliable performance and easy maintenance
- Compatible with Cold Water Start and Cold Water Run systems for extended system protection
- Innovative patented burner “security blanket” minimizes downtime and prevents metal fatigue, extending the life of the unit



Venting Flexibility

- Direct vent capable
- Ducted combustion air ready with rear vent option available for easy installation in any space
- Cat I vertical venting, Cat III sidewall venting (no extractor required for most applications)



Installation Versatility

- Vertically stack units with no offset with the SureRack™ Kit – perfect for small areas¹
- Indoor/outdoor construction with waterproof controls for enhanced durability and longer life
- Flex Gas Dual-Fuel System allows for rapid fuel switchover between natural gas and propane while firing for interruptible-fuel applications — in less than one minute.²



Simple Controls

- VERSA IC controls with LCD display
- Easy front access for simple setup and troubleshooting
- Cascade up to 8 units in parallel or sequential modulation modes for precise control and optimization

Optional Features

- | | |
|--|---|
| <input checked="" type="checkbox"/> Cupronickel heat exchanger | <input checked="" type="checkbox"/> Cold Water Protection |
| <input checked="" type="checkbox"/> Fixed speed pump | <input checked="" type="checkbox"/> BACnet gateway |
| <input checked="" type="checkbox"/> Flex Gas dual-fuel system | <input checked="" type="checkbox"/> SureRack™ |

Applicable for heating in hospitals, schools, industrial processes, and more.

¹Units remain fully serviceable when stacked.

²Not available on 2002C model.

Factory-installed and tested system.



Hi Delta Boilers and Water Heaters Models 302C - 2342C

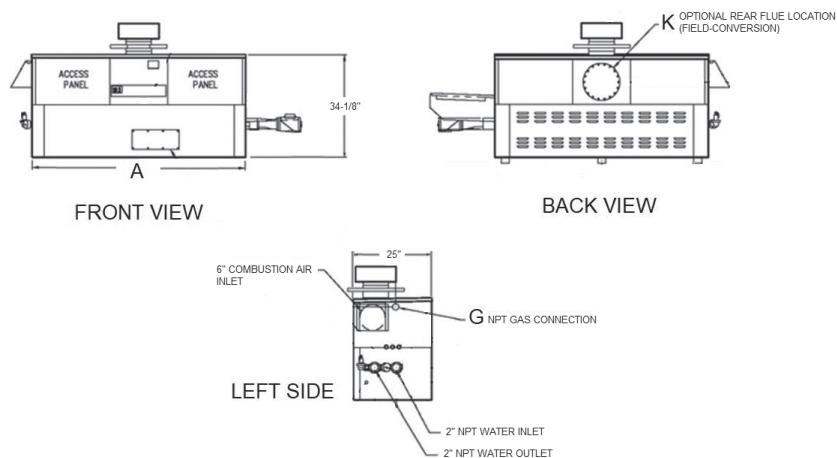
| Model | MBTUH Input ¹ | MBTUH Output ¹ | | Dimensions In. | | |
|--------------------|--------------------------|---------------------------|-----------------------------|----------------|-------|-----------|
| | | Type H 84% | Type WH 85% ² | A Width | G | K Flue |
| 302C | 300 | 252 | 255 | 36 | 3/4 | 5 |
| 402C | 399 | 335 | 339 | 43 | 3/4 | 6 |
| 502C | 500 | 420 | 425 | 50 | 1-1/4 | 6 |
| 652C | 650 | 546 | 553 | 60-1/2 | 1-1/4 | 8 |
| 752C | 750 | 630 | 638 | 67-1/2 | 1-1/4 | 8 |
| 902C | 900 | 756 | 765 | 78 | 1-1/4 | 8 |
| 992C | 990 | 832 | 842 | 57-1/8 | 2 | 10 |
| 1262C | 1260 | 1058 | 1071 | 68-1/2 | 2 | 12 |
| 1532C | 1530 | 1285 | 1301 | 79-7/8 | 2 | 12 |
| 1802C | 1800 | 1512 | 1530 | 91-1/8 | 2 | 14 |
| 2002C ³ | 1999 | 1679 | 1699 | 102-1/2 | 2 | 14 |
| 2072C | 2070 | 1739 | 1760 | 102-1/2 | 2 | 14 |
| 2342C | 2340 | 1966 | 1989 | 113-7/8 | 2 | 16 |

¹ Ratings for models 302C-2342C for natural or propane gas and for elevations up to 4,500 ft. above sea level. For higher elevations, consult the factory.

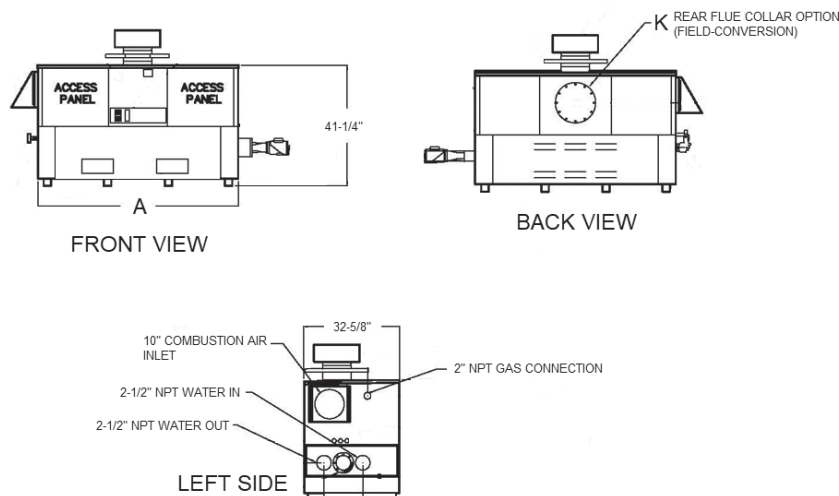
² These efficiencies are for a copper heat exchanger. See product submittal for CuNi efficiency data.

³ Natural gas only. Not available for propane.

Hi Delta 302C-902C Boilers



Hi Delta 992C-2342C Boilers



Learn more about
Hi Delta boilers
at Raypak.com



Learn more about
Hi Delta water heaters
at Raypak.com



Learn more about
Hi Delta pool heaters
at Raypak.com