

## Self Priming Lawn Sprinkler Irrigation Pumps

### Features

#### Quick install and fewer points of failure reducing your time on the job and callbacks

- Quick self-priming operation for lawn irrigation \*All pumps must be primed (filling the cavity with water) before they are first operated
- Standard 2" Inlet reduces the need for additional pipe adapters and potential points of failure
- 115/230 dual voltage motor for maximum flexibility



#### Made in the USA using a majority of U.S. content

- Heavy-duty cast-iron construction
- motor featuring capacitor assisted start up and sealed ball bearings for continuous operation
- Chemical and abrasion resistant fiberglass reinforced thermoplastic impeller

#### Constructed with ease of maintenance in mind

- 4 bolts remove the motor for easy maintenance without disconnecting piping
- Easy access drain plug

### Specs

MOTOR DATA CHART							
HP	Phase	Volts	Hertz	RPM	Code Letter	Max Amps	Locked Rotor Amps
1	1	115	60	3,540	H	17.6	62.0
	1	230				8.8	31.0
1-1/2	1	115	60	3,540	G	18.00	72.0
	1	230				9.00	36.0

- Impeller: Fiberglass reinforced thermoplastic
- Inlet and Outlet: 2" FNPT suction port / 1½" FNPT discharge port
- Flows To: 66 GPM (250 LPM)
- One-year trade warranty

#### Applications:

- Lawn sprinkling
- Irrigation
- Water transfer
- Ground water wells
- Delivering from surface water, such as lakes, ponds or streams

#### How to Specify

**BPUMP**

-

**1HP**

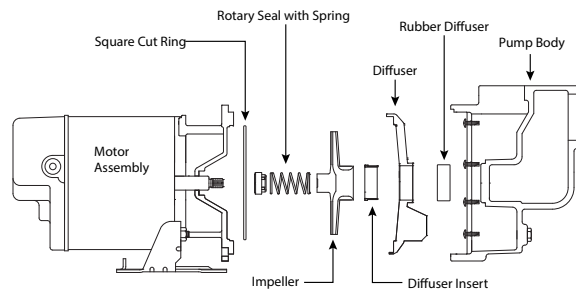
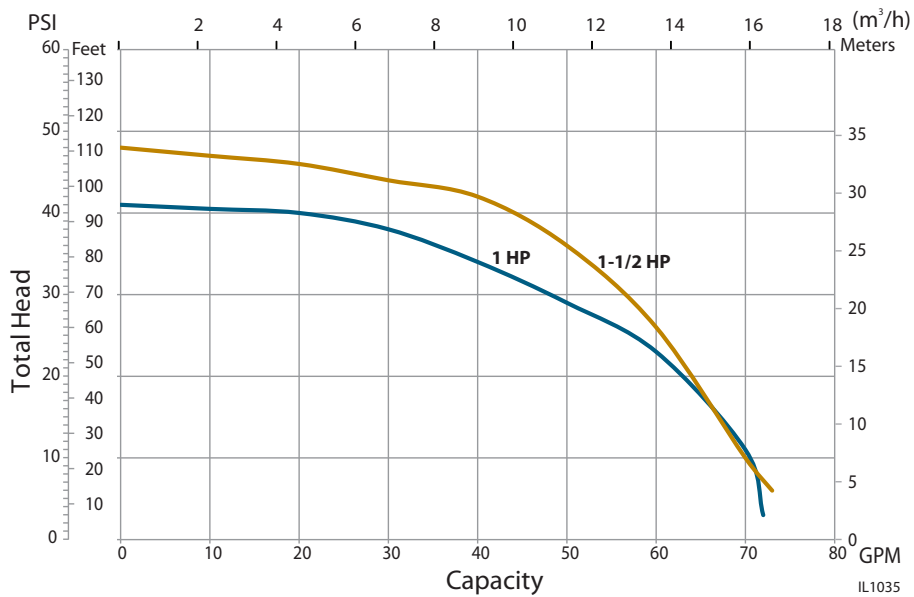
Type:  
Booster Pump

Motor Size:

1HP: 1 HP Motor  
1-5HP: 1.5HP Motor

PERFORMANCE CHART												
Model #	HP	Suction Lift (Ft.)	Discharge Pressure (PSI)							Shut Off Pressure @ 0 Lift (PSI)	Suction Pipe	Discharge Pipe
			15	20	25	30	35	40	45			
			Capacity - U.S. Gallons per Minute									
BPUMP1HP	1	5	65	61	53	44	32			39	2 in.	1-1/2 in.
		10	64	58	49	39	24					
		15	62	55	45	34						
		20	59	51	41	28						
		25	56	46	36	2						
BPUMP1-5HP	1-1/2	5	66	63	59	54	48	40	8	45	2 in.	1-1/2 in.
		10	64	61	57	52	45	28				
		15	63	60	55	49	41	15				
		20	62	58	53	46	32					
		25	60	56	50	42	21					

Max. Case Pressure: 100 PSI



**Rain Bird Corporation**  
 6991 E. Southpoint Road  
 Tucson, AZ 85756  
 Phone: (520) 741-6100  
 Fax: (520) 741-6522

**Rain Bird Technical Services**  
 (800) RAINBIRD (1-800-724-6247)  
 (U.S. and Canada)

**Rain Bird Corporation**  
 970 West Sierra Madre Avenue  
 Azusa, CA 91702  
 Phone: (626) 812-3400  
 Fax: (626) 812-3411

**Rain Bird International, Inc.**  
 1000 West Sierra Madre Ave.  
 Azusa, CA 91702  
 Phone: (626) 963-9311  
 Fax: (626) 852-7343

The Intelligent Use of Water™  
[www.rainbird.com](http://www.rainbird.com)