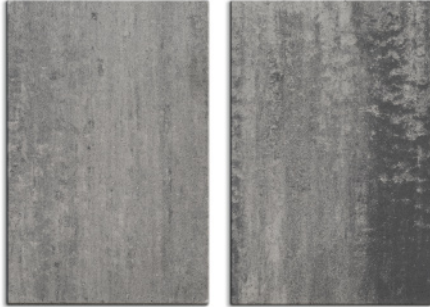
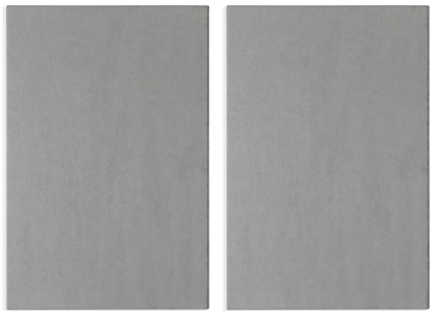


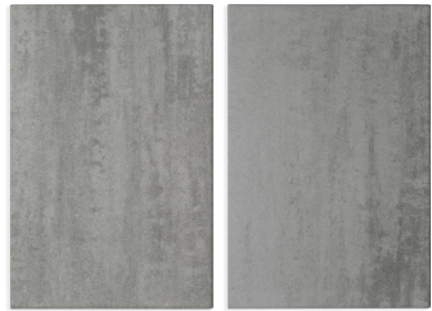
TITAN PAVER/SLAB



CASCADE



NATURAL



PEWTER



SAHARA

- Smooth surface, straight/chamfered edge, radius corners
- Small auto spacer
- Chroma Color facemix technology
- Lifting device recommended
- Available by pallet or layer
- Suitable for all pedestrian and pool applications
- Use 6 x 12 Accent, American Brick, Cobble Stone or Colonial pavers for borders and insets
- Use roller compactor or buffer pad when compacting



| Dimensions | Face Area | Weight | Units/Layer | Layers | Units/Pallet | Pallet Weight |
|--------------------------|-------------|------------|-------------|-------------------|-----------------|---------------|
| 23.62 x 35.43 x 2-3/8" H | 5.68 sq. ft | 153.2 lbs. | 2 | 8 (11.62 sq. ft.) | 16 (93 sq. ft.) | 2,559 lbs. |

Pallet square footage is accurate, layers and bands square footages have been rounded. Dimensions shown are actual unless noted.



Manufactured by:

Rochester
Concrete Products™

7200 Broadway Ave. N, Rochester, MN 55906
Phone: 507-288-8850
rochesterpc.com



©Copyright 2025. All Rights Reserved. This information has been prepared for the benefit of customers interested in Rochester Concrete Products. It was reviewed carefully prior to publication. Rochester Concrete Products assumes no liability for its accuracy or completeness. Final determination of the suitability of any information or material for the use contemplated, or for its manner of use, is the sole responsibility of the user. 125