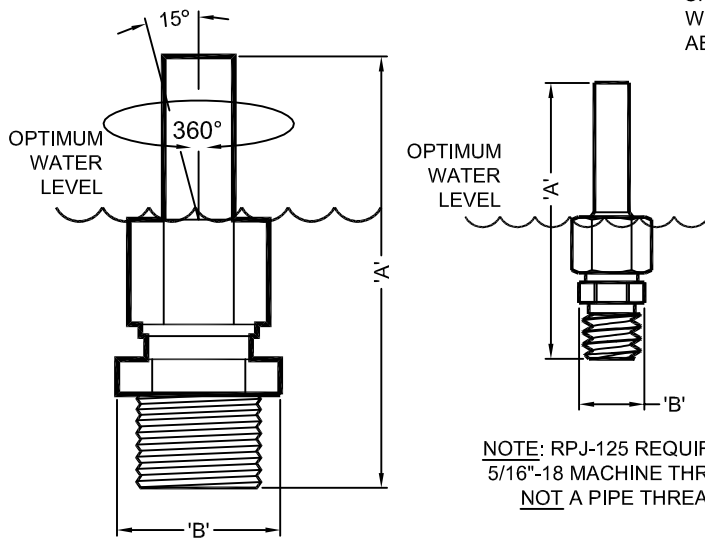


PLAN VIEW

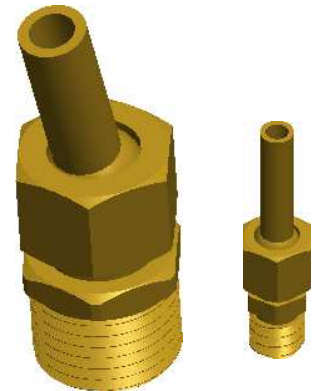
OPERATING DATA:

NOISE: _____ Low to Medium
 VISIBILITY: _____ Low
 SPLASH/MIST: _____ Medium
 WIND STABILITY: _____ Low
 AERATION QUALITY: _____ Low



ELEVATION

NOTE: RPJ-125 REQUIRES A
 5/16"-18 MACHINE THREAD;
 NOT A PIPE THREAD



3D IMAGE

SPECIFICATION DATA: Adjustable Precision Jets; three-piece machined brass construction, adjustable to 15° off vertical in a 360° cone, male threaded connection.

DESIGN/APPLICATION DATA: RPJ Series precision jet produces a delicate, clear stream of water. Precision jets include an integral adjustment feature to allow a variety of spray angles (0-15° off center axis). This product is also used on Roman Fountain spray rings.

NOTES: 1. Fine screening at pump, half the diameter of jet orifice or smaller to minimize nozzle clogging recommended.
 2. Due to continuing product improvement program, Roman Fountains reserves the right to change the specifications without notice.

TECHNICAL AND HYDRAULIC DATA

MODEL NO.	ORIFICE SIZE	SUCTION SCREENING REQUIRED	THREAD SIZE (N.P.T.)	DIM 'A'	DIM 'B'	MAX. SPRAY HEIGHT	2'	4'	6'	8'	10'	12'	15'
RPJ-125	.125"	.065"	5/16"-18	1-1/2"	7/16"	GPM	.40	.60	.76	.87			
						HEAD	4'	6'	10'	12'			
RPJ-187	.187"	.09"	3/8", *1/2" OR 3/4"	2-3/8" 2-5/8"	3/4" 1-1/4"	GPM	1.1	1.5	2.1	2.3	2.9		
						HEAD	4'	6'	10'	12'	16'		
RPJ-250	.250"	.125"	3/8", *1/2" OR 3/4"	2-3/8" 2-5/8"	3/4" 1-1/4"	GPM	1.5	2.5	3.1	3.6	5.0	5.6	
						HEAD	4'	6'	10'	12'	16'	18'	
RPJ-312	.312"	.156"	3/8", *1/2" OR 3/4"	2-3/8" 2-5/8"	3/4" 1-1/4"	GPM	2.2	3.0	4.2	6.0	8.0	9.5	11.0
						HEAD	4'	6'	10'	12'	16'	18'	20'

DRAWING NO.
1.16