

SÅFTRON Pool and Spa

Vinyl Encapsulated Rails and Ladders



Say "Goodbye" to Rust Forever!

No Bonding/Grounding Required! Recommended For Salt Water Pools!



Features and Benefits

Not All Rails Are Created Equally!

Advantages:

- Grounding / Bonding Not Required
- Industry Standard Designs and Sizes
- Superior Rigidity, Strength and Durability
- Best Choice for Salt-Chlorinated Pools
- Does Not Get Hot
- No Rusting, Scaling, Pitting or Fading
- Impervious to Pool Chemicals
- 5 Year Warranty on Pool Rails and Ladders
- 10 Year Warranty on Pool Fencing and Railing
- Smooth, Glossy, Easy to Clean Surface
- Low Maintenance
- Easy Installation

Installation Options for

**Pool and Spa Rails,
Handrails, Deck Rails
Dock Ladders**



**Non-corroding
Anchor Socket**



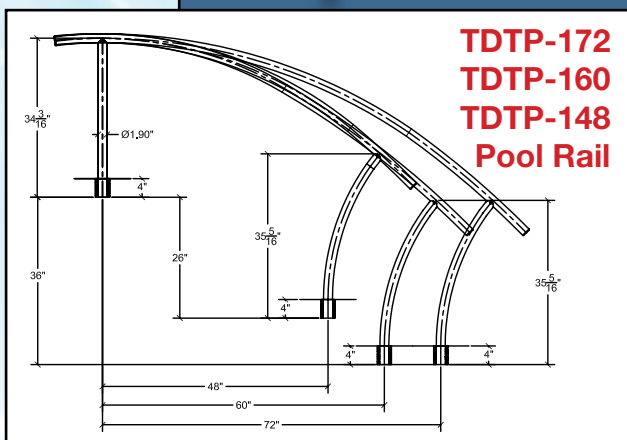
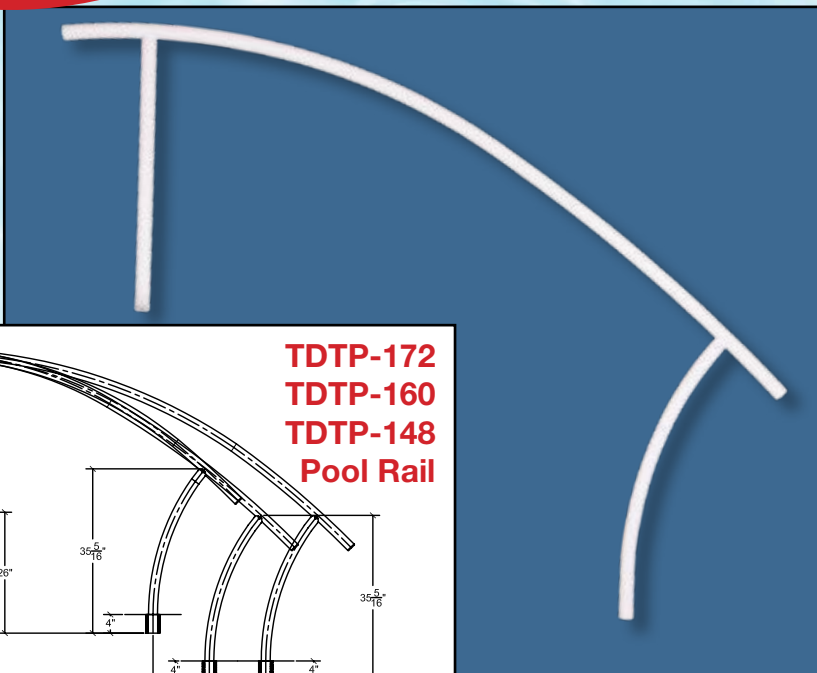
**6" Surface
Mounting Base**

Comes in 6 Standard Colors

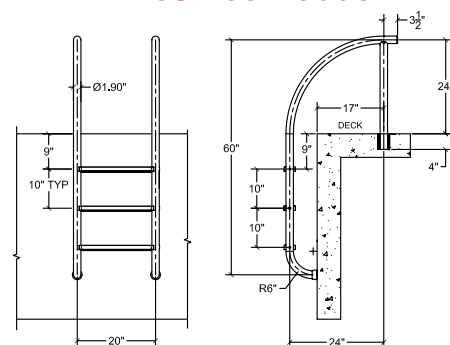


SAFTRON Introducing

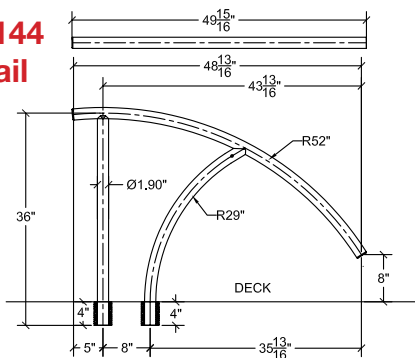
New Triton Pool Rail Series



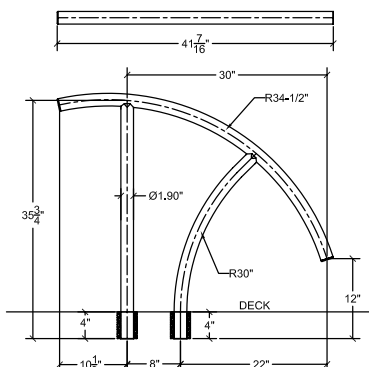
PTL-224-3S Pool Ladder



**TRTD-144
Pool Rail**



TRTD-130 Pool Rail



Installation Options

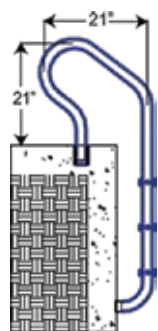


**Non-corroding
Anchor Socket**

**6\" Surface
Mounting Base**



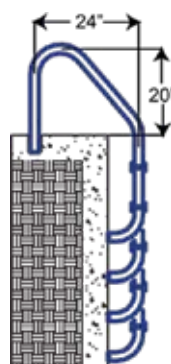
Elite Series Ladders (2, 3, 4 & 5 Step)



P-421-LP2
P-421-LP3
P-421-LP4
P-421-LP5



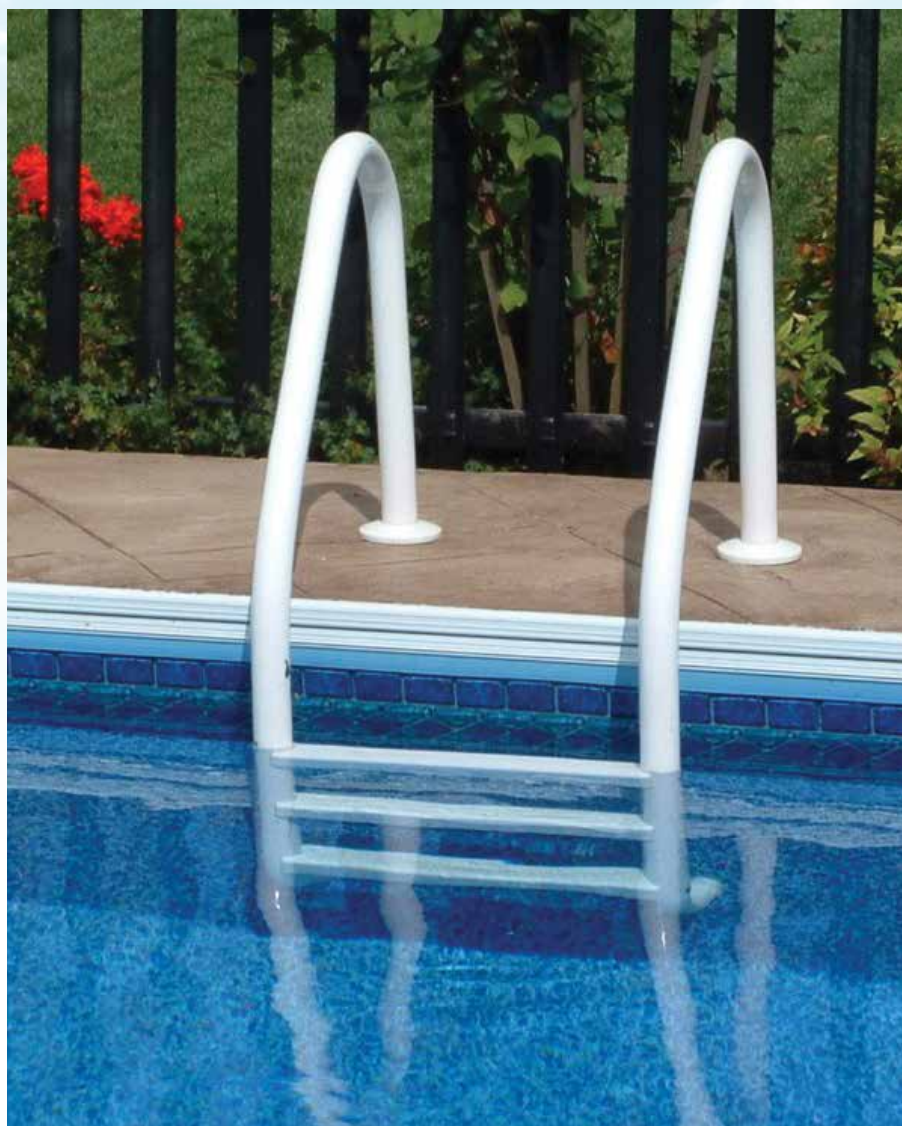
Residential Ladders (2, 3, 4 & 5 Step)



Premium Plus
PPL-324-2S
PPL-324-3S
PPL-324-4S
PPL-324-5S

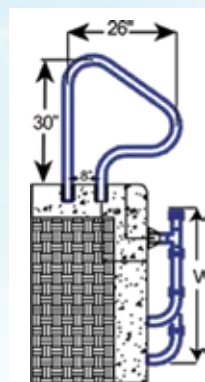
Classic
P-324-L2
P-324-L3
P-324-L4
P-324-L5

Items in red denote fully reinforced pool rails



Split Ladders (3 & 4 Step)

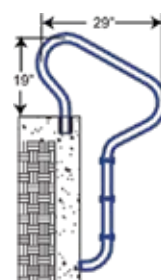
P-326-SL3 / P-326-SL4



Recommended for
automatic pool covers

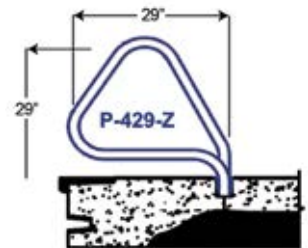
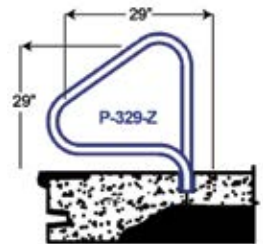
Camelback Ladders (3 Step)

P-529-L3

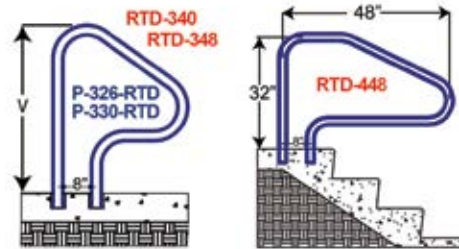




Pretzel Rails (3 & 4 Bend) Sold in Pairs



Return-to-Deck Handrails (3 & 4 Bend)



Items in red denote fully reinforced pool rails

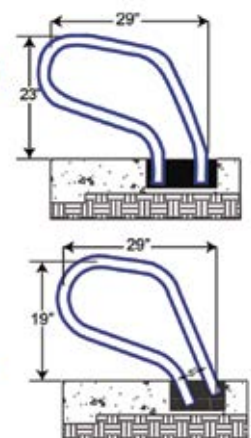


Ring Rails

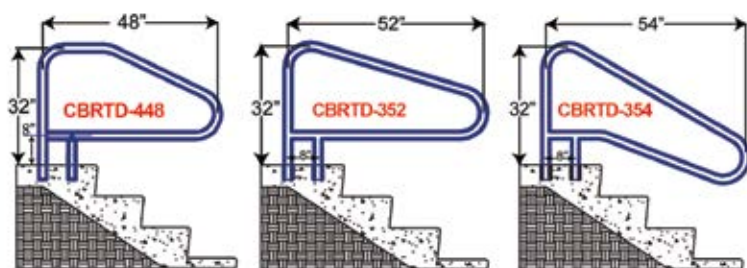
P-329AS-RTD



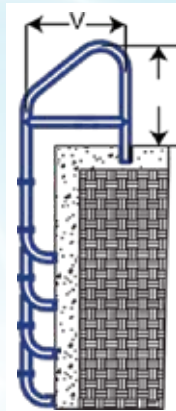
P-329



Cross Braced Return-to-Deck Rails (3, & 4 Bend)

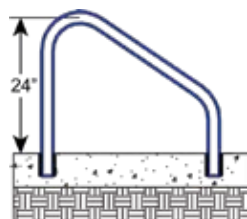


Items in red denote fully reinforced pool rails



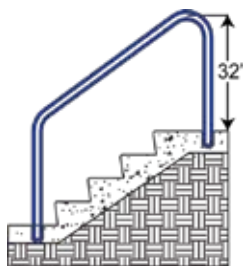
Cross Braced Ladders (3, 4 & 5 Step)

Deck Mounted Handrails

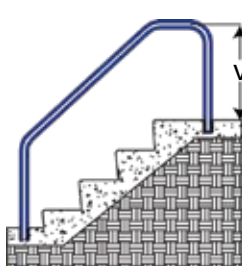


DR-230
DR-232
DR-236
DR-240

Deck-to-Pool Handrails (2 & 3 Bend)



DTP-248
DTP-260



DTP-348
DTP-360
DTP-366
DTP-372

Items in red denote fully reinforced pool rails



CBL-324-3S
CBL-324-4S
CBL-324-5S
CBL-330-3S
CBL-330-4S
CBL-330-5S
CBL-336-3S
CBL-336-4S
CBL-336-5S

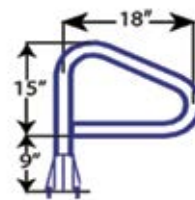
Items in red denote fully reinforced pool rails

SAFTRON Spa Rails



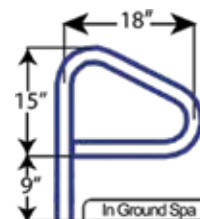
Spa Floor Rails

SF-24-LT



- Includes Lift and Turn Base

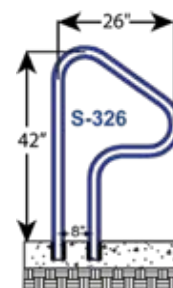
SF-24



For Core and Anchor Socket Mounting



Double Post Spa Rail S-326



SAFTRON

Dock Ladders

Perfect for Marinas, Personal Docks/Piers

Made from the same high-impact polymer as our pool rails!



Comes with a
5 year warranty
and will not get
hot *in the sun*,
fade, pit *or*
corrode.

**Reinforced with Marine grade aluminum
for strength and durability!!**



Surface base 6"
Top Mount
(Included in purchase)
Non-corroding composite
NO GROUNDING!!!
When installed with
SAFTRON Pool Rails



DL-212-5S

Safety Railing

White

Gray

Black

Beige

Taupe

Graphite
Gray

Saftron has been making high-impact metal reinforced polymer safety railing for over 30 years for Hotels and Resorts, Theme Parks, Aquatic Centers, Marina's and Industrial Applications.

Comes with a
10 year
warranty
and will not
corrode, rust,
pit, *or* fade!



SAFTRON Pool Fencing and Gates



Fencing Sections and Gates

FS-2200



FG-2200



Gates come with
Magna latches

FS-2400



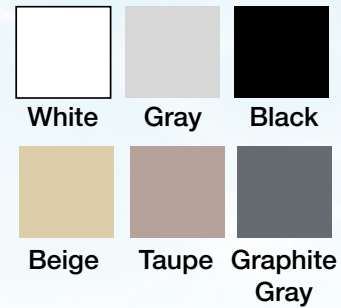
FG-2400



Advantages

- Easy Installation using Plate Mount or Core Mount
- No Rusting, Pitting or Scaling
- No Bonding/Grounding Required with Core Mount Application Only
- Will Not Fade, Chip or Corrode
- Cool to the Touch
- Smooth, Glossy, Easy to Clean Surface
- Low Maintenance
- 10 Year Warranty

Six Standard Colors



Installation Options



**Plate
Mount**

**Core
Mount**





Hardware & Accessories



**3" Mounting Base
For Ladders Only**
SB-3 (single & case qty)



Escutcheons (Pair)
ESC (single & case qty)



Anchor Socket Covers (Pair)
ASC (single & case qty)



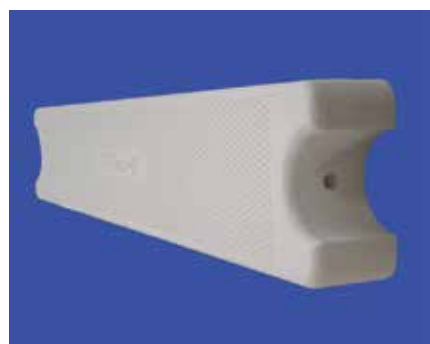
**3 Step Ladder
Refurbishing Kit**
P-3SLR-KIT



**6" Surface Mounting Base
For Ladders and Handrails**
SB-F (case qty)



**Non-corroding
Anchor Socket**
ANCH-1 (single & case qty)
Comes in white only



**Single Ladder Step
(Hardware Separate)**
P-LS-20 (single & case qty)
Comes in all 6 colors



**Marine Grade Ladder
Step Hardware**
P-LS-Hdwr (single & case qty)

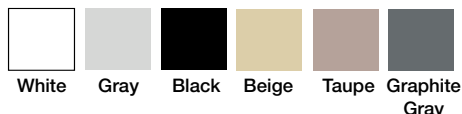


Ladder Bumpers (Pair)
P-BP19 (single & case qty)
Comes in white only



**Jigs for Ladders &
Return-to-Deck Rails**
P-JIG-L / P-JIG-RTD
Includes Bubble Level
Comes in white only

Available in 6 Colors





Volleyball Kits / Replacement Posts and Nets

Volleyball Kits Include Posts,
Net, Mounting & Hardware

PA-VB-KIT-SM

Kit Mounted Using 6" Surface Bases

PA-VB-KIT-AM

Kit Mounted Using Anchor Sockets

Replacement Posts Include
Posts, Mounting & Hardware

PA-VBP-SM

Posts Mounted Using 6" Surface Bases

PA-VBP-AM

Posts Mounted Using Anchor Sockets

PA-VBN-16

16' Replacement Net Only

Items in red denote fully reinforced posts

Transfer Rails / Exercise Bars

1.67 OD Straight A.D.A. Transfer Rails

TRS-12 TRS-14

TRS-18 TRS-18

1.90 OD Safety Exercise Bars

09" Bar X-09 (Pr)

24" Bar X-24

36" Bar X-36

48" Bar X-48

60" Bar X-60

72" Bar X-72



5 Arm Wall-Mounted Towel Rack

Includes Mounting Hardware

PA-MTR-5



SAFTRON

Aquatic Center & Water Parks



Designed using the same high impact polymer exterior and reinforced interior.

Applications include:

Water Parks

Theme Parks

Marinas

Stadiums

Hotels and Resorts

Equipment Rooms

**Pool and Deck Railing
Available in Matching
Colors**

Custom Colors Available

