

SÄFTRON

6012 33rd St East, Bradenton, FL 34203

www.SÄFTRON.com

Phone: 305.233.5511 • Fax 941.751.2802

New fully reinforced
construction provides

**SUPERIOR
STRENGTH AND
DURABILITY**

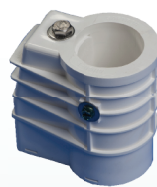
Ideal
for Salt
Chlorinated
Pools

Pool Rails • Spa Rails Ladders • Safety Railings Commercial Rails & Ladders

2, 3 & 4 Bend Styles Available,
Cross-Braced Models Available



Cross-Braced Ladders



Installation Options



Non-corroding composite
Anchor Socket
NO GROUNDING!!!
When installed with
SÄFTRON Pool Rails

Non-corroding composite
Surface base 6"
Top Mount
NO GROUNDING!!!
When installed with SÄFTRON Pool Rails



Deck-Mounted
Handrails



Commercial
In-Ground
Cross Braced
Ladders



Return-to-Deck
Pool Rails



Cross-Braced Rails



Deck-to-Pool Handrails



Custom Handrails

View Our COMMERCIAL PRODUCT LINE On Back

SÄFTRON

COMMERCIAL High Impact Polymer Rails & Ladders Fully Reinforced Product Guide

Phone: 305.233.5511 • Fax 941.751.2802 • www.SÄFTRON.com

Fully Reinforced Construction Provides Superior Strength and Durability

Specify Color
When Ordering:



Deck-to-Pool Handrails

Part #	Width	Height
DTP-248	48"	32"
DTP-260	60"	32"
DTP-348	48"	32"
DTP-360	60"	32"
DTP-366	66"	32"
DTP-372	72"	32"



Return-to-Deck Cross-Braced Handrails

Part #	Width	Height
CBRTD-448	48"	32"
CBRTD-352	52"	32"
CBRTD-354	54"	32"



Cross-Braced Ladders

Part #	Width	Height
CBL-324-3S	24"	67"
CBL-324-4S	24"	79"
CBL-324-5S	24"	91"
CBL-330-3S	30"	67"
CBL-330-4S	30"	79"
CBL-330-5S	30"	91"
CBL-336-3S	36"	67"
CBL-336-4S	36"	79"
CBL-336-5S	36"	91"



Deck Mounted Handrails

Part #	Width	Height
DR-230	30"	24"
DR-232	32"	24"
DR-236	36"	24"
DR-240	40"	24"

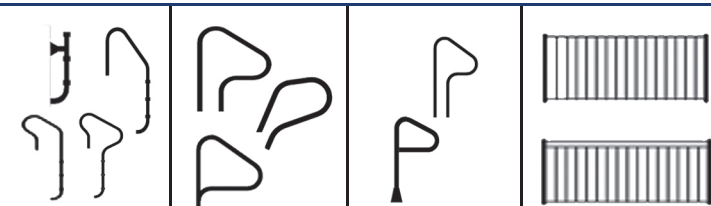


Return-to-Deck Handrails

Part #	Width	Height
RTD-340	40"	32"
RTD-348	48"	32"
RTD-448	48"	32"



Additional Pool Rails, Ladders & Safety Railing Available



Pool Ladders

Pool Rails

Spa Rails

Safety Rails

SÄFTRON pool products have one of the best warranties in the industry and are guaranteed to be free from defects in workmanship and materials under normal use for a period of 5 years. For full warranty terms and conditions refer to: www.SÄFTRON.com