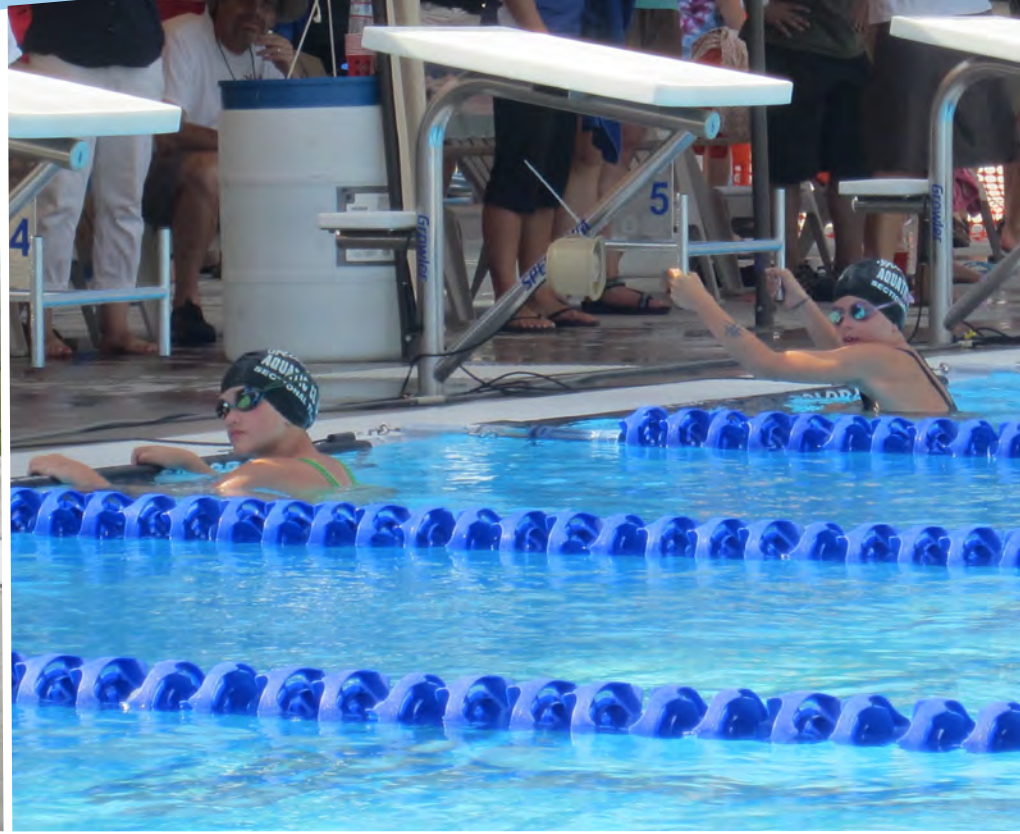


STARTING PLATFORMS

Strength. Experience. Form.



STARTING BLOCK BENEFITS

Spectrum Aquatics® provides a selection of single and dual post starting platforms to accommodate any deck and gutter configuration for recreational and competition pools.

- Highest quality stainless steel
- Patented no-wobble anchoring system
- Flexibility in design – multiple platform tops, setback accommodations, and retrofit capabilities

SPECTRUM AQUATICS® STARTING PLATFORMS ARE:			
Material Finish	<ul style="list-style-type: none"> • 600 grit stainless steel finish offers great corrosion resistance and ease of cleaning 		
Frame Finish	<ul style="list-style-type: none"> • 304-L stainless steel, electropolished and passivated stainless steel coated with Spectra Shield™ for maximum corrosion resistance • Powder coating colors available 		
Anchor	<ul style="list-style-type: none"> • Constructed of machined bronze - will not rust • Patented anti-wobble locator pinned design • Alignment slot design offers ease of installation and removal • No tools required 		
Post and Frame Construction	<ul style="list-style-type: none"> • Single post round tubing with continuous bend and no welds for superior strength • Dual post options also available • Same stainless steel material as frame for maximum corrosion resistance 		
Footboard	<ul style="list-style-type: none"> • Stainless steel tops with 3M non-slip material • Track style wedge is adjustable and removable for enhanced flexibility. Available for the Xcellerator, Record Breaker and Fusion • No visible hardware 	<ul style="list-style-type: none"> • Rotationally molded tops made of low density, polyethylene for the Growler and Grizzly • No visible hardware 	
Side Step	<ul style="list-style-type: none"> • Available and ideal for bulkhead applications • 3M non-slip surface • Easy mount 		
Handles	<ul style="list-style-type: none"> • Stainless steel construction • Side handles enable fast take offs • 18" H bar design backstroke handles 		
Top Dimensions	32"x24" Fusion, Xcellerator and Record Breaker	32"x25" Growler, Cougar	23"x25" Grizzly, Bighorn
Setback	18"- 24"	18"- 35"	18"- 36"
Compliance	<ul style="list-style-type: none"> • Compliant with FINA, USA Swimming, NCAA, and NFSHSA 		
Other	<ul style="list-style-type: none"> • Compatible with leading timing systems • Custom colors and logos available 		

STARTING BLOCKS



FUSION

57281 FUSION BY SPECTRUM
57572 FUSION TOP



RECORD BREAKER

57283 SINGLE POST
57741 DUAL POST



XCELLERATOR

57282 SINGLE POST



GRIZZLY

21655 REAR STEP
21654 SIDE STEP



GROWLER

21657 REAR STEP
21653 SIDE STEP



BIGHORN

21115 LONG REACH
21095 STANDARD REACH



COUGAR

21135 SIDE STEP
21145 REAR STEP

COVERS



STARTING PLATFORM COVER

21400 SOFT STARTING PLATFORM COVER

LOGOS



Xcellerator, Record Breaker and Fusion available with custom logo upgrades.
Contact us for more information.

ANCHORS



DUAL POST ANCHOR ASSEMBLY

6" DEEP DUAL POST ANCHOR SET — 24070
10" DEEP DUAL POST ANCHOR SET — 24071



SINGLE POST ALIGNMENT TOOL

(NEW CONSTRUCTION) — 21705



SINGLE POST ANCHOR WITH STAINLESS STEEL COVER PLATE — 21700

COLORS

Xcellerator, Record Breaker and Fusion come standard in black with custom color upgrades. The Growler, Grizzly, Cougar, and Bighorn are available in the below colors with white as standard.



Red

Blue

Green

Yellow



800.791.8056 | sales@spectrumproducts.com | spectrumaquatics.com
7100 Spectrum Lane, Missoula, MT 59808

WHY SPECTRUM AQUATICS®?

CUSTOMER SERVICE

- Nation-wide field, engineering, and technical support
- Quick turn-around times

Quality & Durability

- Stainless steel construction
- Triple corrosion containment for harsh pool environments
 - o Manufactured with 100% USA made and melted stainless steel, in a 100% stainless steel environment
 - o Electropolished and passivated
 - o Coated with Spectra Shield®

Performance

- Anchors engineered to eliminate deflection
- Easy to install and remove
- No tools required

Flexibility

- Works with multiple deck configurations
- Accommodates setbacks ranging from 12" to 40" and a water draft up to 12"

