

# TX-30 LED Pool Lighting Kit



The TX-30 LED Pool Lighting Kit is a complete lighting system that includes a power center and one, two, or three color Treo LED pool lights. Select from six colors (white, blue, green, red, amber, and magenta) or two color changing modes (slow color change mode and party mode). The TX-30 has a manual on/off switch, fast blow fuse, and can easily be installed.

## TX-30

- Side hinged door for ease of installation
- On/off switch, no need for additional external switch
- Terminal block for secure connections, no need for wire nuts
- Corrosion-resistant polycarbonate enclosure rated NEMA 3R
- Integrated fuse for surge protection during installation
- Low voltage internal transformer: 120VAC to 12VAC
- Maximum 30 Watt system

## Treo LED Lights

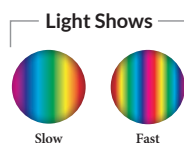
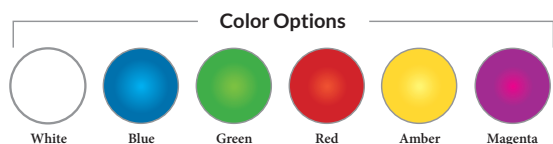
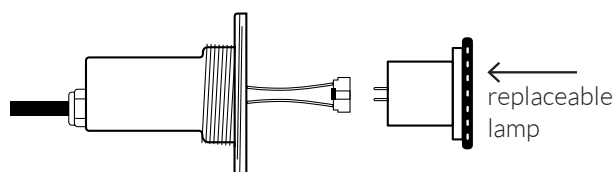
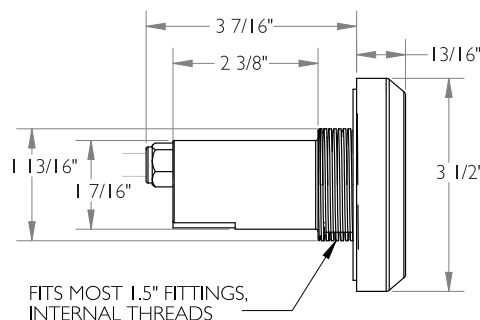
- Color (RGB) light with 80' cord length
- Memory function automatically remembers the last color setting when turned off
- Self-color synchronizing with other S.R.Smith LED pool lights and product

MODEL NO.	DESCRIPTION
1TR-SRS-TX-30	Power center with manual on/off switch and one Treo LED pool light
2TR-SRS-TX-30	Power center with manual on/off switch and two Treo LED pool lights
3TR-SRS-TX-30	Power center with manual on/off switch and three Treo LED pool lights

# TREO LED Light

The TREO LED light is a 12VAC, 5 Watt LED underwater light for gunite, vinyl liner, and fiberglass pools with a replaceable LED lamp.

- Serviceable design - Replaceable LED lamp
- Designed for use with standard thread 1.5" diameter wall fittings
- Available in lengths of 30', 50', 80', 150'
- No earth bonding required
- White or color changing LED models available
- Color functions:
  - Advanced color functionality with poolLUX Premier: (49) color variations and dimming control (via wireless remote)
  - 12V controls: (6) colors (white, blue, green, red, amber, magenta) and (2) light shows
- Color memory function
- Five colored trim rings included to match the surface of your pool or spa
- 3 year warranty
- ETL Listed - Conforms to UL676, certified to CSA C22.2 #89



Model No.	Description
FLED-C-TR-30	TREO 30' RGB LED pool light
FLED-C-TR-50	TREO 50' RGB LED pool light
FLED-C-TR	TREO 80' RGB LED pool light
FLED-C-TR-150	TREO 150' RGB LED pool light
FLED-W-TR-30	TREO 30' White LED pool light
FLED-W-TR-50	TREO 50' White LED pool light
FLED-W-TR	TREO 80' White LED pool light
FLED-W-TR-150	TREO 150' White LED pool light
FLED-VK-TR	TREO vinyl adapter kit
FLED-LAU-C	RGB Replacement Lamp
FLED-LAU-W	White Replacement Lamp
FLED-C-TR-PK8	8 TREO RGB LED pool lights with 80' cord
FLED-W-TR-PK8	8 TREO White LED pool lights with 80' cord

