

# TECHO — BLOC

## TECHNICAL DATA SHEET

**Product Name:** BLU 60 mm  
**Product type:** Precast concrete slab & permeable  
**Applications:**

RESIDENTIAL		COMMERCIAL					PERMEABLE	BITUMINOUS SAND-SET	GRASS (CONCRETE GRID) PAVER	SLAB ON PEDESTAL SET	ADA <sup>3,5</sup>
PEDESTRIAN	VEHICULAR	PEDESTRIAN ONLY	PEDESTRIAN PLAZA	PARKING LOTS	SECONDARY STREETS	MAIN STREETS					
✓		✓					✓ <sup>8</sup>				✓

### Geometric characteristics

**Nominal dimensions in. (mm):** height<sup>6</sup> x width x length (Dimensions include the joint spacer)

*Unit A:* 2 3/8 x 13 x 6 1/2 (60 x 330 x 165)  
*Unit B:* 2 3/8 x 13 x 13 (60 x 330 x 330)  
*Unit C:* 2 3/8 x 13 x 19 1/2 (60 x 330 x 495)

**Joint Width<sup>3:</sup>** 9/32 in. (7 mm)

**Texture:** HD2 Slate, HD2 Smooth, Polished, Slate, Smooth

**Wet DCOF:** HD2 Slate=0.64  
 (Dynamic Coefficient of Friction)<sup>3,4</sup> HD2 Smooth=0.84  
 Polished=0.81  
 Slate=0.81  
 Smooth=0.83

**Approximate weight:**

*Variable:* 15.9 to 160.5 lb (7.2 to 72.8 kg)  
*Per surface:* 160.5 lb/ft<sup>2</sup> (72.8 kg/m<sup>2</sup>)

### Physical characteristics<sup>1:</sup>

**Dimensional tolerances:**

*Length and width:*

*Dimension ≥ 24 in. (610 mm)* -0.04 and +0.08 in. -1.0 and +2.0 mm  
*Dimension > 24 in. (610 mm)* -0.06 and +0.12 in. -1.5 and +3.0 mm

*Height:* ± 0.125 in. (3.0 mm)

*Warpage:*

*Dimension ≤ 17.75 in. (450 mm):* ±0.08 in. (±2.0 mm)  
*Dimension > 17.75 (450 mm):* ±0.12 in. (±3.0 mm)

**Modulus of Rupture:** 725 psi (5.0 MPa)

**Freeze-thaw durability<sup>1:</sup>**

*Loss of mass after 28 cycles:* 225 g/m<sup>2</sup> (max), or  
*Loss of mass after 49 cycles:* 500 g/m<sup>2</sup> (max)

### Surface Infiltration characteristics<sup>7</sup>

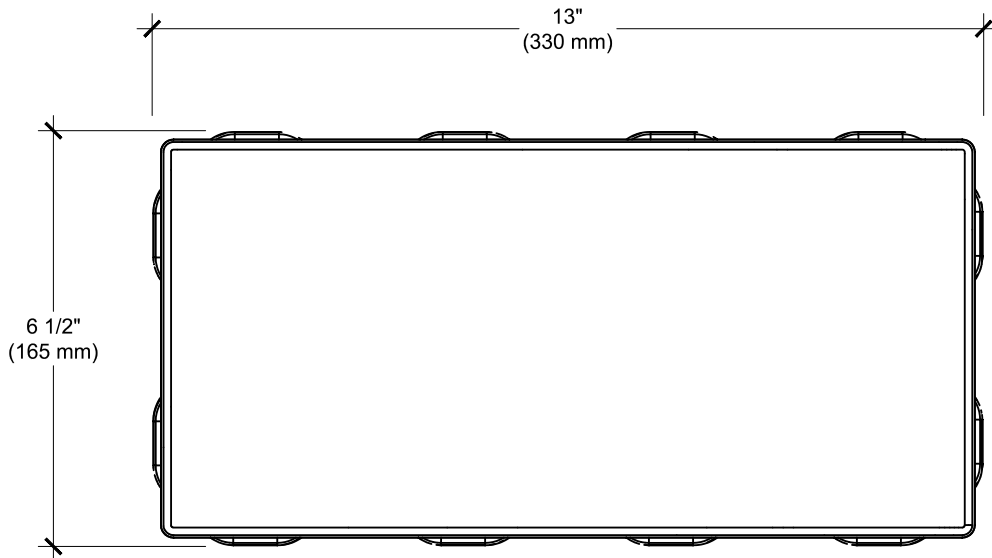
**Percent of open surface area:** 3.0%

**Surface Infiltration rate<sup>7:</sup>** 570 in/h (14 475 mm/h)

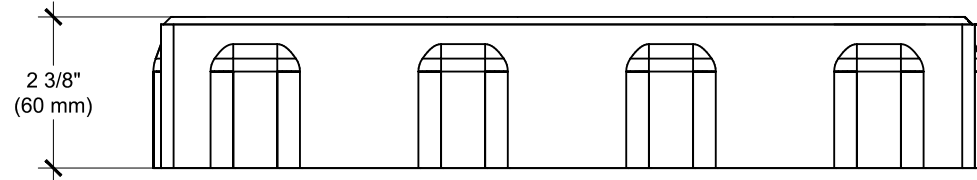
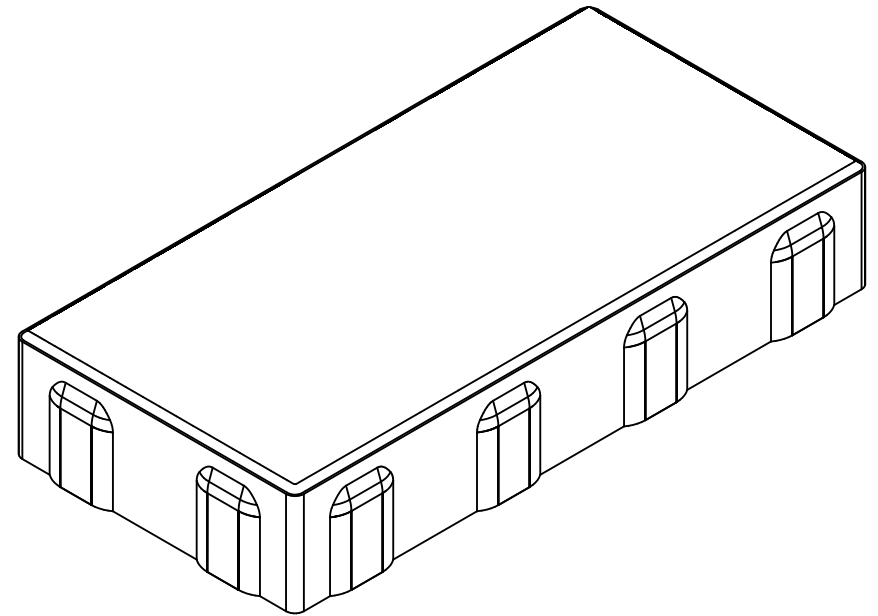
#### Notes

- Meets and exceeds the requirements of the ASTM C 1782 Standard Specification for Utility Segmental Concrete Paving Slabs..
- Residential Applications:**  
 Pedestrian: Pedestrian use (e.g. patios and walkways).  
**Commercial Applications**  
 Pedestrian only: Pedestrian at all times, no cars, service vehicles or other mobile equipment (e.g. courtyards, parks and pedestrian walkways).
- These products meet the following design guidelines for accessible paths:
  - Slip-resistance paver surface.
  - Paver joint openings do not allow the passage of a sphere greater than ½ in. (13 mm) in diameter.
- Meets and exceeds the requirements of the ANSI A326.3 Standard test Method for measuring Dynamic Coefficient of Friction of Hard Surface Flooring Materials.
- Tumbled or embossed pavers could result on surfaces or edges unsuitable for applications requiring accessibility design consideration.
- Polished texture height: 2 5/16" (58 mm)
- Initial post-construction surface Infiltration rate measured as per ASTM C 1781
- For permeable application, the installation should be combined with Blu 6x13 in a modular pattern. A min. of 4.5% opening surface requires 75% of Blu 6x13 and 25% of Blu 60.

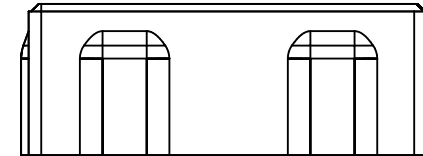
To learn more about the textures and colors for this product, please contact our representatives



TOP VIEW



FRONT VIEW



SIDE VIEW

**NOTE:**  
 - DIMENSIONS INCLUDE THE JOINT SPACER.  
 - POLISHED TEXTURE HEIGHT: 2 15/16" (58mm).

THESE GRAPHICAL REPRESENTATIONS ARE INTENDED FOR PRELIMINARY DESIGN PURPOSES ONLY AND SHOULD NOT BE USED FOR CONSTRUCTION. FINAL DESIGN SHOULD BE APPROVED BY A QUALIFIED, LICENSED PROFESSIONAL ENGINEER.

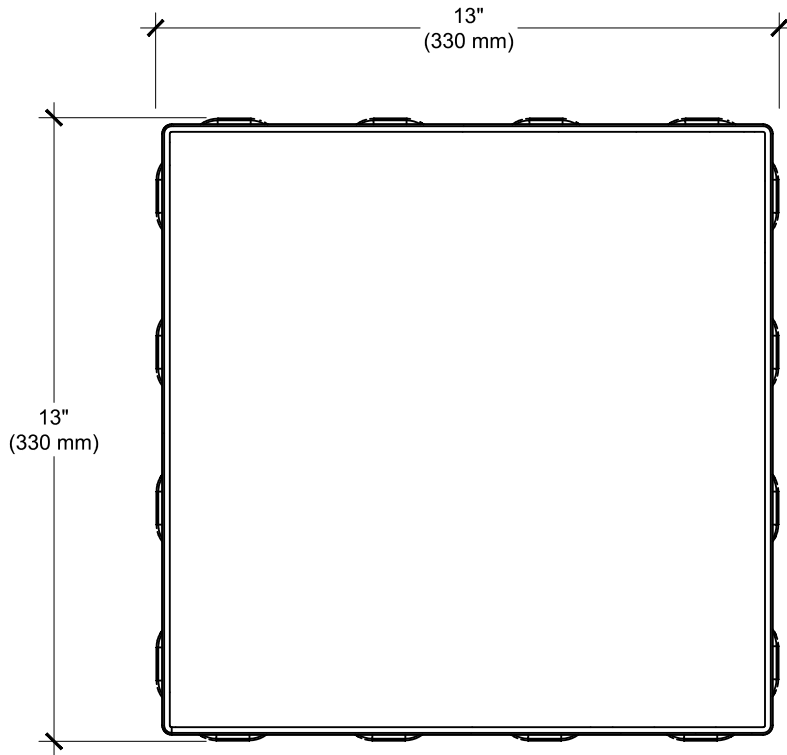
**TECHO — BLOC**

1-877-832-4625  
[www.techo-bloc.com](http://www.techo-bloc.com)

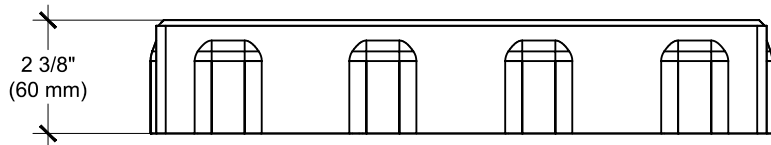
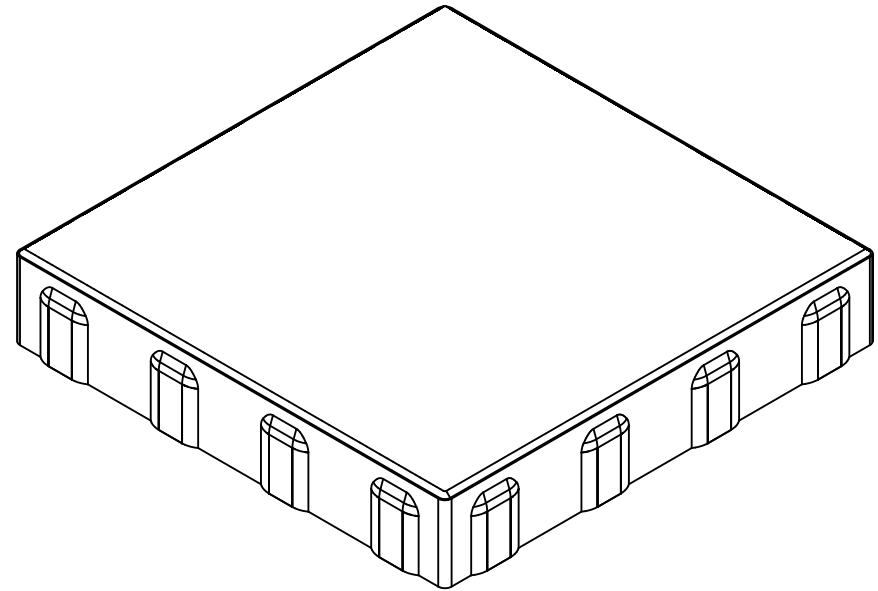
**SLAB BLU 60 mmn (13x6)**  
 SYSTEM COMPONENTS

TECHO-BLOC SEGMENTAL PAVEMENTS  
 TYPICAL DETAILS

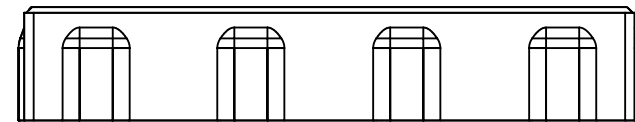
DATE :	2020-09-25
DRAWN BY :	L.P.
SCALE:	NONE
SHEET:	1/1
FILE:	TS-DET-BLU 60 13x6-EN



TOP VIEW



FRONT VIEW



SIDE VIEW

NOTE:

- DIMENSIONS INCLUDE THE JOINT SPACER.
- POLISHED TEXTURE HEIGHT: 2 15/16" (58mm).

THESE GRAPHICAL REPRESENTATIONS ARE INTENDED FOR PRELIMINARY DESIGN PURPOSES ONLY AND SHOULD NOT BE USED FOR CONSTRUCTION. FINAL DESIGN SHOULD BE APPROVED BY A QUALIFIED, LICENSED PROFESSIONAL ENGINEER.

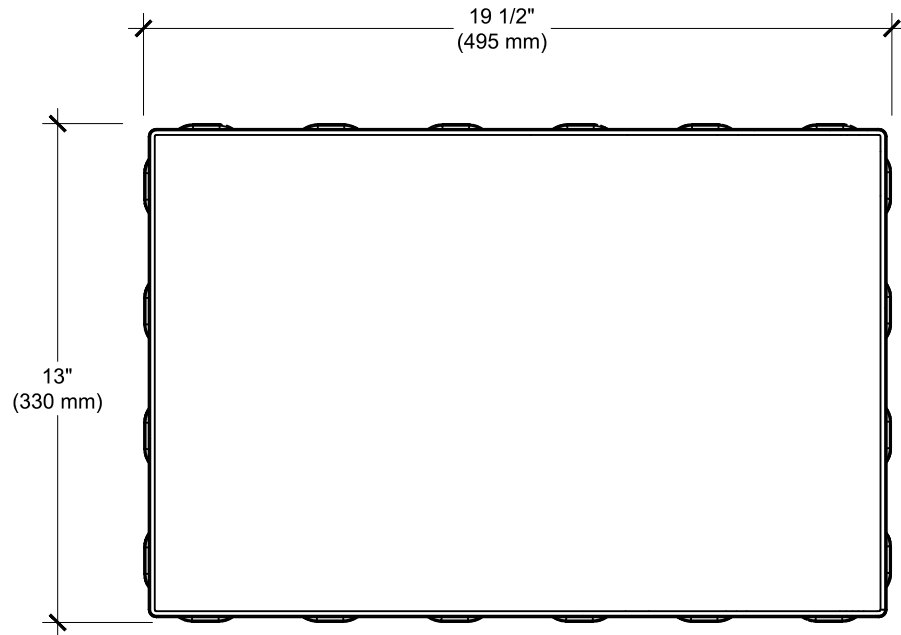
**TECHO — BLOC**

1-877-832-4625  
www.techo-bloc.com

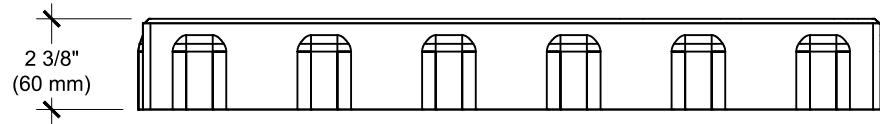
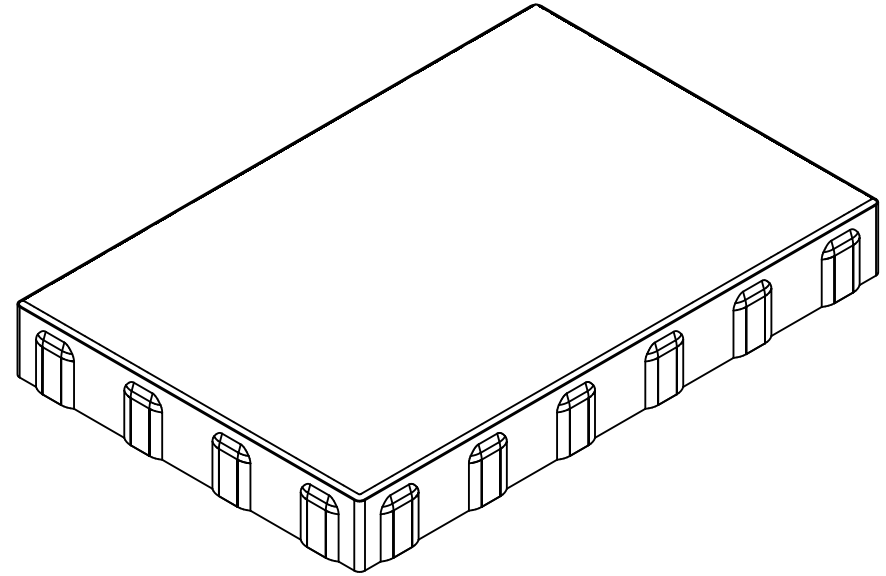
**SLAB BLU 60 mm (13x13)**  
SYSTEM COMPONENTS

TECHO-BLOC SEGMENTAL PAVEMENTS  
TYPICAL DETAILS

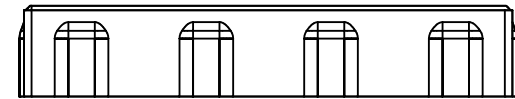
DATE :	2020-09-25
DRAWN BY :	L.P.
SCALE:	NONE
SHEET:	1/1
FILE:	TS-DET-BLU 60 13x13-EN



TOP VIEW



FRONT VIEW



SIDE VIEW

**NOTE:**

- DIMENSIONS INCLUDE THE JOINT SPACER.
- POLISHED TEXTURE HEIGHT: 2 15/16" (58mm).

THESE GRAPHICAL REPRESENTATIONS ARE INTENDED FOR PRELIMINARY DESIGN PURPOSES ONLY AND SHOULD NOT BE USED FOR CONSTRUCTION. FINAL DESIGN SHOULD BE APPROVED BY A QUALIFIED, LICENSED PROFESSIONAL ENGINEER.

**TECHO — BLOC**

1-877-832-4625  
www.techo-bloc.com

**SLAB BLU 60 mm (13x19)**  
SYSTEM COMPONENTS

TECHO-BLOC SEGMENTAL PAVEMENTS  
TYPICAL DETAILS

DATE :	2020-09-25
DRAWN BY :	L.P.
SCALE:	NONE
SHEET:	1/1
FILE:	TS-DET-BLU 60 13x19-EN