



HS-SUB-12

Hardscape Subwoofer

User Manual

Description

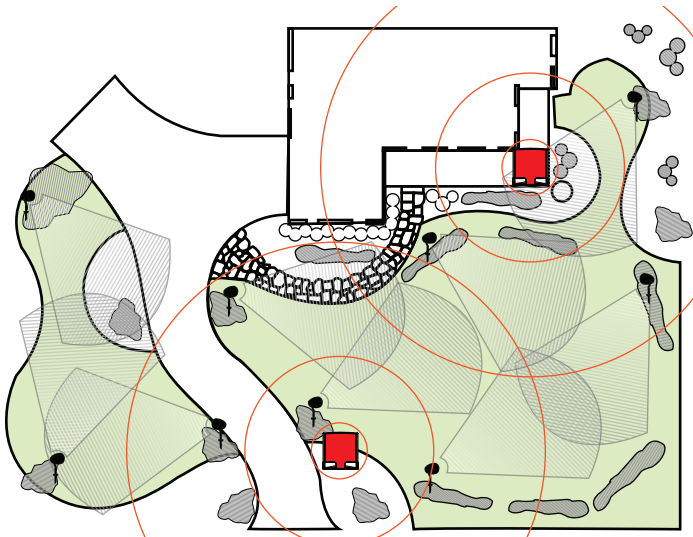
TruAudio's Hardscape subwoofer, HS-SUB-12, is designed to be water tight with a minimal footprint. It can be strategically installed in almost any space, delivering powerful bass. The Hardscape sub can be wired 4Ω or 70v, making it as versatile as it is powerful.

Contents:

- Hardscape subwoofer
- (2) Silicone filled wire nuts
- (4) Rubber feet

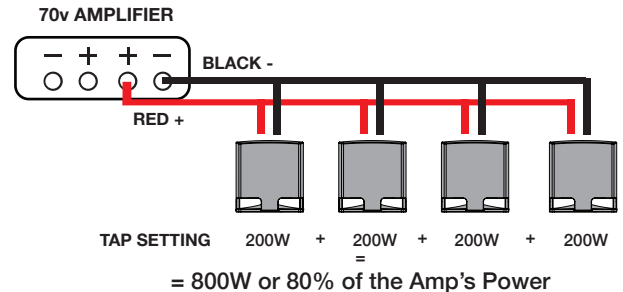
Subwoofer Placement

The Hardscape subwoofer provides low frequency bass covering up to 2500 sq. feet or about a 30' radius. Whenever possible try to locate it in the middle of the listening area. The included rubber feet gives you the flexibility to place it in many locations by helping level and stabilize the sub on uneven surfaces.



70V Installation Basics

When installing the sub as 70v, make sure the total tap setting wattage does NOT exceed 80% of the amp's rated power.



Finding the Correct Amp Size

$\text{AMP POWER} \times 80\% = \text{SAFE}$

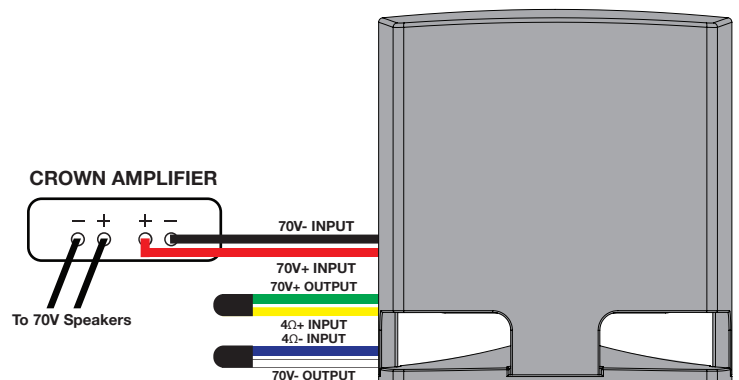
$1000\text{W} \times 80\% = 800\text{W}$

$800\text{W} \div 200\text{W} = 4 \text{ Subwoofers}$

Summary: If using a 1000 watt per channel amplifier like the CDi 4000, you can use (4) 200W Hardscape subwoofers (HS-SUB-12).

Wiring the Hardscape Sub 70v

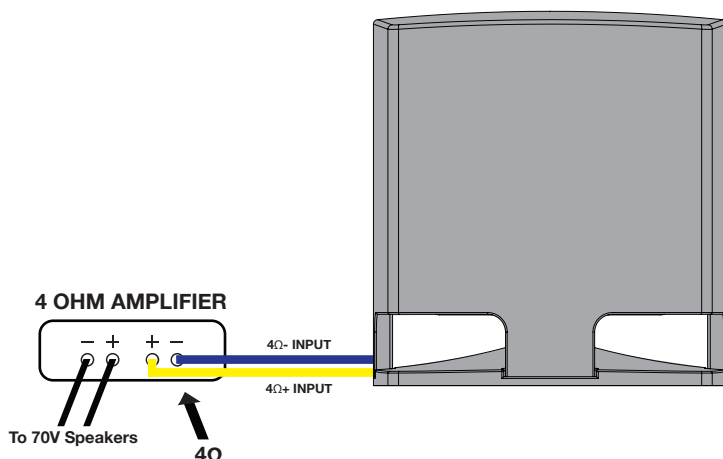
Connect the red cable (70V+ input) and black cable (70V- input) to the amp. Leave the green cable (70V+ output) connected with the yellow cable (4Ω+ input) and the white (70V- output) connected with the blue (4Ω- input) cable.





Wiring the Hardscape Sub 4Ω:

Cut the blue/white and yellow/green wires. Connect the yellow (4Ω+ input) wire & the blue (4Ω- input) wire to the positive and negative output from the 4Ω amp.



HS-SUB-12

Specifications

Speaker Type: Outdoor Hardscape subwoofer
Woofer: 12" injected polypropylene
Impedance: 4Ω or 70V
Power (4Ω): 400W
Power (70V): 200W
Frequency Response: 28 - 150 Hz (+/- 3dB)
Sensitivity: 90dB
Cabinet Dimensions: 15.6" (396mm) W,
15.6" (396mm) D,
16.5" (420mm) H,

SoundVision Technologies dba

OUTDOOR SPEAKERS and SUBWOOFERS PRODUCT WARRANTY

All outdoor speakers and subwoofers have a limited 5 year warranty. This warranty includes lifetime parts and repair labor on all components. The warranty extends only to the original purchaser of the product and not to any subsequent owner. TRUAUDIO's obligation under these warranties is limited to repairing or replacing any component found defective in material or workmanship under normal conditions of use with an equal and/or current product. These warranties shall not apply to products which have been abused, modified, or disassembled. Products to be repaired or returned under this warranty must be returned to the factory through an authorized TruAudio dealer with all transportation and insurance charges prepaid.

It is the policy of TRUAUDIO to continuously incorporate improvements into our products. All specifications are subject to change without notice. If you have any questions regarding this or any other TRUAUDIO products, please visit www.TruAudio.com or contact us:

Office: 1-888-858-1555, Monday-Friday 7 am - 6 pm MST.
Email: CustomerService@truaudio.com

TruAudio
198 N Old Highway 91
Hurricane, UT 84737 USA

