

Waterway... the leader in Quality, Confidence, Innovation and Service.



Oxnard, California

Waterway is proud to design, engineer and produce our quality line of products right here in the USA. But that capability means a lot more than just Made in USA. Waterway provides the unique opportunity to meet any of your custom Pool, Spa and Bath products needs using only premium NSF Approved materials and meeting all Certifications and Standards. All at our 460,000 sq. ft. facility in Oxnard, California since 1973.

***Designed,
Engineered &
Manufactured
in the USA.***



Waterway™



2200 East Sturgis Road, Oxnard CA 93030 • Phone 805.981.0262 • Fax 805.981.9403
waterway@waterwayplastics.com • www.waterwayplastics.com

Waterway

Drains, Grates & Suctions

Listed, Certified and Tested in strict accordance to the requirements of ANSI/ASME A112.19.8-2007 and ANSI/ASME A112.19.8a-2008 and ANSI/APSP-16 (2011) as defined in CPSC letter dated April 8, 2011. Compliant to the latest Consumer Safety Product Commission Requirements (CPSC).



*Designed,
Engineered &
Manufactured
in the USA.*

VGB Compliance



All Waterway Drains, Grates and Suctions are Listed, Certified and Tested in strict accordance to the requirements of ANSI/ASME A112.19.8-2007 and ANSI/ASME A112.19.8a-2008 and ANSI/APSP-16 (2011) as defined in CPSC letter dated April 8, 2011. Compliant to the latest Consumer Safety Product Commission Requirements (CPSC).

WARNING

Read and follow all instructions in the Owner's Manual for the equipment.
Failure to follow instructions can cause injury and/or death.

Color Reference

Last Digit of Part No.	Color/Metal Finish
0	White
1	Black
7	Gray
9-BEI	Beige (Tan)
9-DKG	Dark Gray

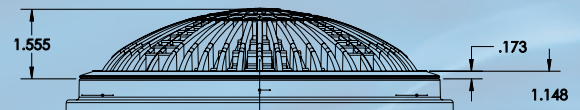
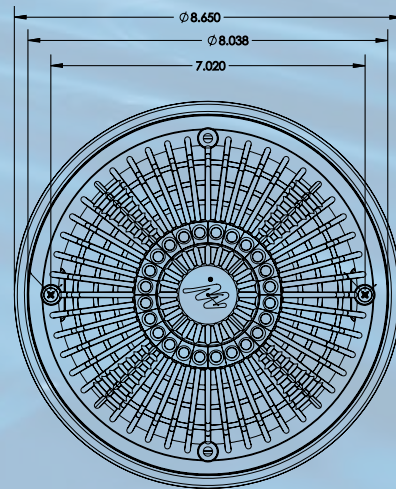
Tru Flo Covers and Frames



640-1800 V

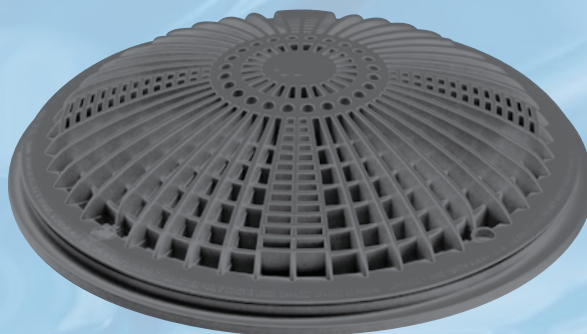
SPECIFICATIONS:

- Total Open Area: 14.8 sq. in.
- Frame Size: 8" Round
- Floor Flow Rate: 153 GPM @ 2.72 ft/sec
- Wall Flow Rate: 96 GPM @ 1.73 ft/sec
- Flow Rate @ 1.5 ft/sec: 68 GPM



Tru Flo 8" Covers and Frames

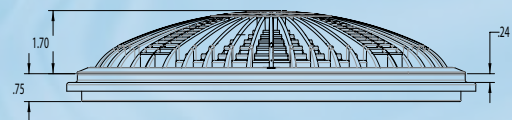
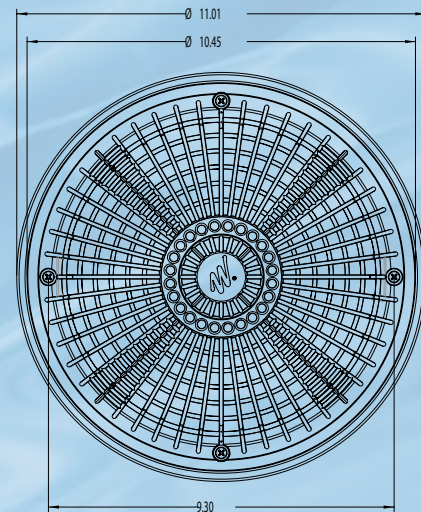
Part No.	Description	Case Weight	Case Quantity
640-18xx V	8" Tru Flo Cover & Frame	17.67 lbs.	25



640-1919-DKG V

SPECIFICATIONS:

- Total Open Area: 30.9sq.
- Frame Size: 10" Round
- Floor Flow Rate: 200GPM @ 4.04 ft/sec
- Wall Flow Rate: 136 GPM @ 2.24 ft/sec
- Flow Rate @ 1.5 ft/sec: 143 GPM

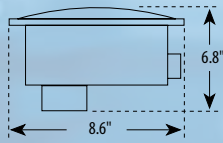


Tru Flo 10" Covers and Frames

Part No.	Description	Case Weight	Case Quantity
640-19xx V	10" Tru Flo Cover & Frame	22.65 lbs.	20

Replace the final x in the part number with the color of your choice. See guide on inside front cover.

Concrete Sump Bodies & Assemblies



SIDE x BOTTOM



672-2410



672-2500



640-2520 V

**VGB
2008**



Note: Always use two or more drains per pump.

Concrete Bodies and Assemblies - Side x Bottom

Part No.	Description	Case Quantity
672-2410	8" Sump Body - Concrete - 1 1/2" S	7
672-2500	8" Sump Body - Concrete - 2" FPT	7
672-2510	8" Sump Body - Concrete - 2" S	7
640-8300 V	8" Sump Assembly - Concrete - 1 1/2" S - with 8" Tru Flo Drain Cover	8
640-8500 V	8" Sump Assembly - Concrete - 2" S - with 8" Tru Flo Drain Cover	8
640-8700 V	8" Sump Assembly - Concrete - 2" FPT - with 8" Tru Flo Drain Cover	8

FEATURES:

- Meets Florida Building Code
- 8" diameter x 7" deep (8") (plus sockets)



672-2600



640-2400



672-2900

**VGB
2008**



Note: Always use two or more drains per pump.

Deep Sump Bodies and Assemblies - Side x Bottom

Part No.	Description	Case Quantity
672-2610	8" Deep Sump Body - Concrete - 2 1/2" S	1
672-2600	8" Deep Sump Body - Concrete - 2 1/2" FPT	1
640-7410 V	8" Deep Sump Assembly - Concrete - 2 1/2" S - with 8" Tru Flo Drain Cover	1
640-7400 V	8" Deep Sump Assembly - Concrete - 2 1/2" FPT - with 8" Tru Flo Drain Cover	25
672-2710	10" Deep Sump Body - Concrete - 2 1/2" S	15
672-2700	10" Deep Sump Body - Concrete - 2 1/2" FPT	15
672-2910	10" Deep Sump Body - Concrete - 3" S	1
672-2900	10" Deep Sump Body - Concrete - 3" FPT	15
640-7510 V	10" Deep Sump Assembly - Concrete - 2 1/2" S - with 10" Tru Flo Drain Cover	4
640-7500 V	10" Deep Sump Assembly - Concrete - 2 1/2" FPT - with 10" Tru Flo Drain Cover	4
640-7610 V	10" Deep Sump Assembly - Concrete - 3" S - with 10" Tru Flo Drain Cover	4
640-7600 V	10" Deep Sump Assembly - Concrete - 3" FPT - with 10" Tru Flo Drain Cover	4

Replace the final x in the part number with the color of your choice. See guide on inside front cover.

Vinyl Liner Sump Bodies & Assemblies



672-2430



672-2530



640-2750 V

Vinyl Liner Sump Bodies & Assemblies - Side x Bottom

Part No.	Description	Case Quantity
672-2430	8" Sump Body - Vinyl - 1 1/2" S	7
672-2420	8" Sump Body - Vinyl - 1 1/2" FPT	7
672-2520	8" Sump Body - Vinyl - 2" S	7
672-2530	8" Sump Body - Vinyl - 2" FPT	7
640-8400 V	8" Sump Assembly - Vinyl - 1 1/2" S - with 8" Tru Flo Drain Cover	1
640-8600 V	8" Sump Assembly - Vinyl - 1 1/2" FPT - with 8" Tru Flo Drain Cover	1
640-8800 V	8" Sump Assembly - Vinyl - 2" S - with 8" Tru Flo Drain Cover	1
640-8900 V	8" Sump Assembly - Vinyl - 2" FPT - with 8" Tru Flo Drain Cover	1

VGB
2008



Note: Always use two or more drains per pump.



672-2680 V



672-2740



672-2950

FEATURES:

- Meets Florida Building Code
- 8" diameter x 7" deep (8") (plus sockets)

Vinyl Liner Deep Sump Bodies and Assemblies - Side x Bottom

Part No.	Description	Case Quantity
672-2620	8" Deep Sump Body - Vinyl - 2 1/2" S	4
672-2630	8" Deep Sump Body - Vinyl - 2 1/2" FPT	4
640-7440 V	8" Deep Sump Assembly - Vinyl - 2 1/2" S - with 8" Tru Flo Drain Cover	1
640-7450 V	8" Deep Sump Assembly - Vinyl - 2 1/2" FPT - with 8" Tru Flo Drain Cover	1
672-2740	10" Deep Sump Body - Vinyl - 2 1/2" S	1
672-2750	10" Deep Sump Body - Vinyl - 2 1/2" FPT	1
672-2940	10" Deep Sump Body - Vinyl - 3" S	1
672-2950	10" Deep Sump Body - Vinyl - 3" FPT	1
640-7540 V	10" Deep Sump Assembly - Vinyl - 2 1/2" S - with 10" Tru Flo Drain Cover	4
640-7550 V	10" Deep Sump Assembly - Vinyl - 2 1/2" FPT - with 10" Tru Flo Drain Cover	4
640-7640 V	10" Deep Sump Assembly - Vinyl - 3" S - with 10" Tru Flo Drain Cover	4
640-7650 V	10" Deep Sump Assembly - Vinyl - 3" FPT - with 10" Tru Flo Drain Cover	4

VGB
2008



Note: Always use two or more drains per pump.

Replace the final x in the part number with the color of your choice. See guide on inside front cover.

Adjustable Collar Sump Bodies & Assemblies

FEATURES:

- PVC body (better for slip or threaded sockets)
- Available in 1 1/2" or 2" slip sockets
- Collar and cover in white and colors
- Tru Flo Drain Cover UL Listed

Waterway's wide selection of pool drains and drain covers simplifies installation for new or existing pools and spas.

We manufacture our drain bodies in PVC for better glue joints or threaded connections.



Tru Flo Drain Cover & Extended Collar

Extended Collar

VGB
2008



Note: Always use two or more drains per pump.

Adjustable Collar Sump Bodies & Assemblies

Part No.	Description	Case Quantity
672-2450	8" Sump Body - Adjustable Collar - 1 1/2" S (Side x Bottom)	6
672-2550	8" Sump Body - Adjustable Collar - 2" S (Side x Bottom)	6
672-2560	8" Sump Body - Adjustable Collar - 2" S (Side Only)	8
640-282x V	8" Sump Assembly - Adjustable Collar - 1 1/2" S (Side x Bottom) - with 8" Tru Flo Drain Cover	8
640-292x V	8" Sump Assembly - Adjustable Collar - 2" S (Side x Bottom) - with 8" Tru Flo Drain Cover	8
640-234x V	8" Tru Flo Drain Cover and Extended Collar Assembly	15
640-314x V	10" Tru Flo Drain Cover and Extended Collar Assembly	15

FEATURES:

- Meets Florida Building Code
- 8" diameter x 7" deep (8") (plus sockets)



672-2830 V

672-2720

672-2930

VGB
2008



Note: Always use two or more drains per pump.

Adjustable Collar Deep Sump Bodies & Assemblies - Side x Bottom

Part No.	Description	Case Quantity
672-2640	8" Deep Sump Body - Adjustable Collar - 2 1/2" S	1
640-283x V	8" Deep Sump Assembly - Adjustable Collar - 2 1/2" S - with 8" Tru Flo Drain Cover	1
640-712x V	8" Deep Sump Assembly - Adjustable Collar - 2 1/2" S - with 8" Tru Flo Drain Cover	1
640-713x V	8" Deep Sump Assembly - Adjustable Collar - 2 1/2" FPT - with 8" Tru Flo Drain Cover	1
672-2720	10" Deep Sump Body - Adjustable Collar - 2 1/2" S	1
672-2730	10" Deep Sump Body - Adjustable Collar - 2 1/2" FPT	1
672-2920	10" Deep Sump Body - Adjustable Collar - 3" S	1
672-2930	10" Deep Sump Body - Adjustable Collar - 3" FPT	1
640-722x V	10" Deep Sump Assembly - Adjustable Collar - 2 1/2" S - with 10" Tru Flo Drain Cover	1
640-723x V	10" Deep Sump Assembly - Adjustable Collar - 2 1/2" FPT - with 10" Tru Flo Drain Cover	1
640-732x V	10" Deep Sump Assembly - Adjustable Collar - 3" S - with 10" Tru Flo Drain Cover	1
640-733x V	10" Deep Sump Assembly - Adjustable Collar - 3" FPT - with 10" Tru Flo Drain Cover	1

Replace the final x in the part number with the color of your choice. See guide on inside front cover.